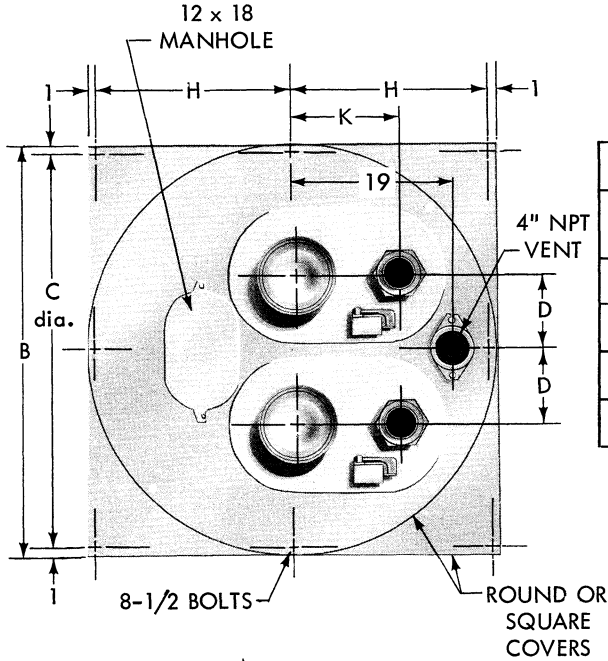
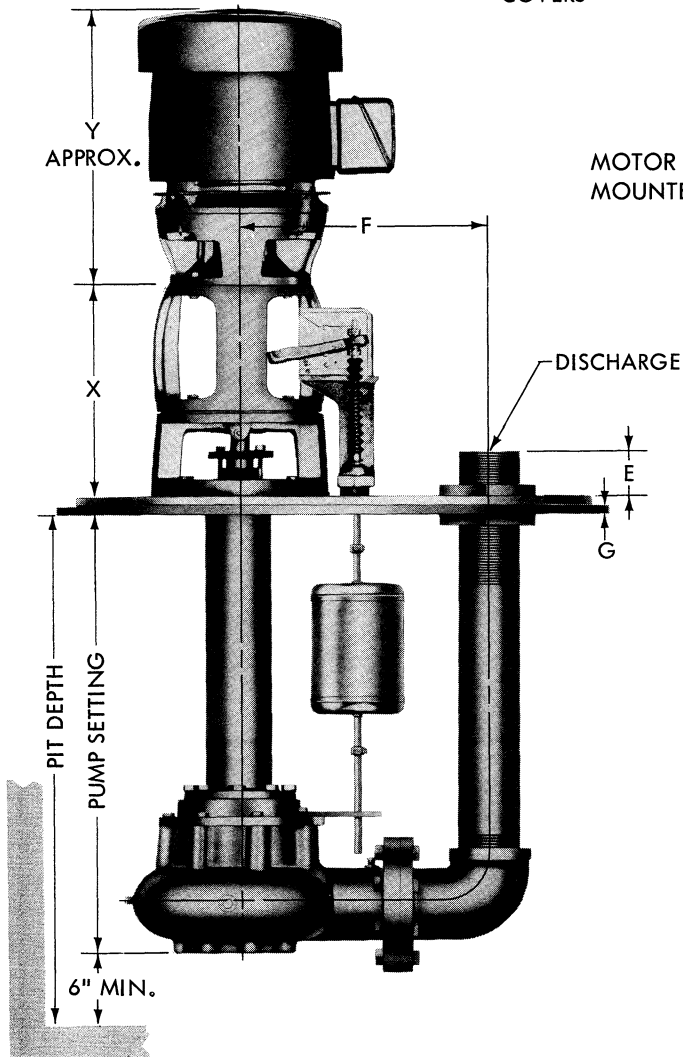


# AURORA MODEL 672 PUMP ON DUPLEX PLATE WITH TWO OVALS AND MANHOLE



PUMP SIZE			E	F	K	
DISCH	SUCTION	CASE BORE			22 X 28 OVAL	26 X 36 OVAL
3	3	9	6-1/2	14-13/16	N.A.	9-5/16
4	4	9	6	16-15/16	N.A.	8-15/16
3	3	12	6-1/2	17-13/16	N.A.	9-13/16
4	4	12	6	18-15/16	N.A.	10-15/16

COVER SIZE B RD. OR SQ.	C ROUND	H SQUARE	G	OVAL USED	D
			STL		
66	64	32	3/4	26 x 36	15
78	76	38	3/4	26 x 36	15



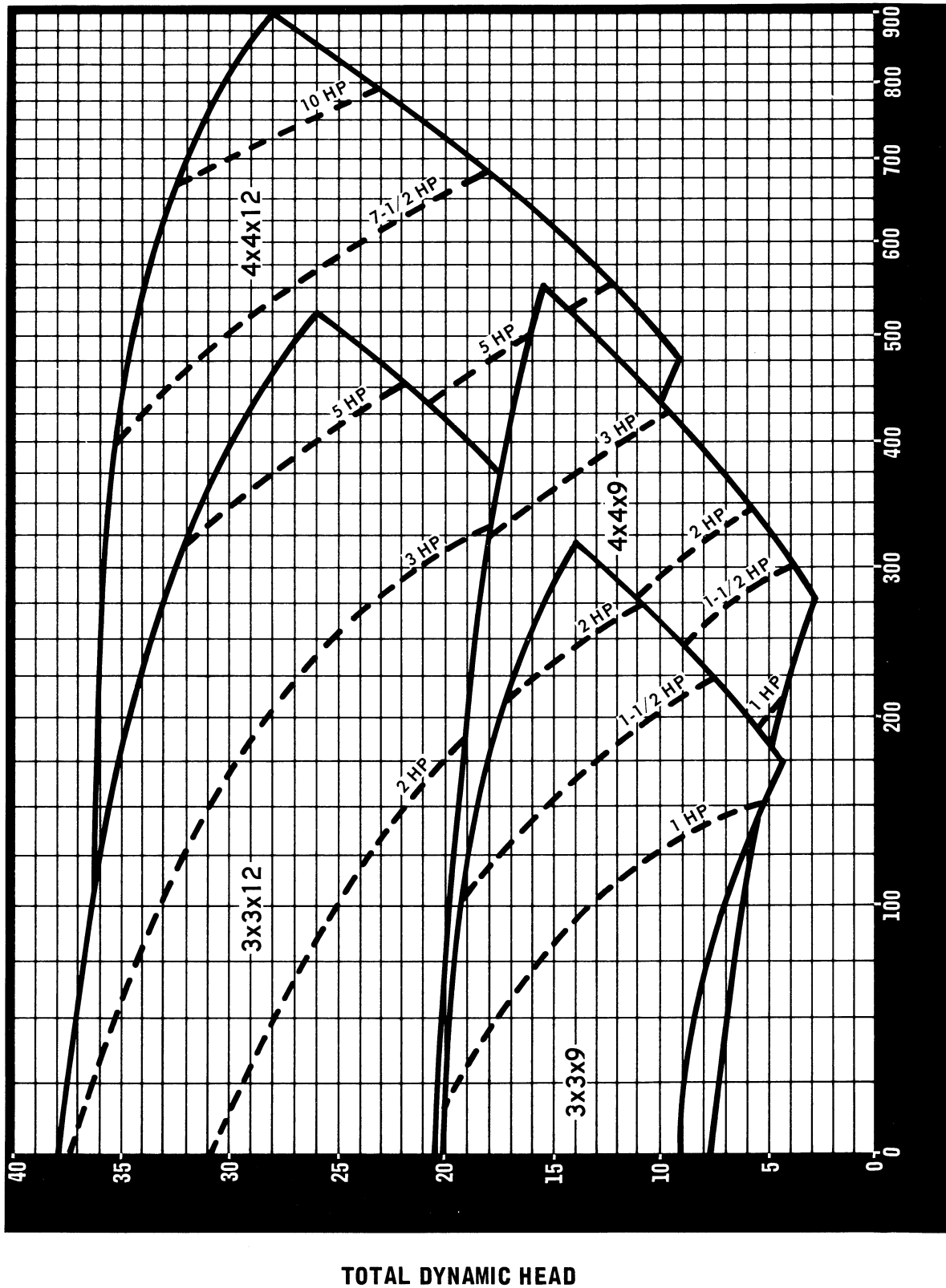
MOTOR & FLOAT SWITCH  
MOUNTED BY OTHERS

FRAME	X	Y
143HP	13-7/8	11
145HP	13-7/8	12
182HP	13-7/8	13
184HP	13-7/8	14
213HP	13-7/8	16
215HP	13-7/8	17
254HP	13-7/8	19
256HP	13-7/8	21
284HPH	15-5/8	21
286HPH	15-5/8	23
324HP	15-5/8	24
326HP	15-5/8	25
364HP	15-5/8	29
365HP	15-5/8	30

NOTES:

1. ALL DIMENSIONS IN INCHES.
2. DIMENSIONS MAY VARY  $\pm 3/8$ ".
3. NOT FOR CONSTRUCTION PURPOSES UNLESS CERTIFIED.
4. FLOAT SWITCH FURNISHED ONLY WHEN SPECIFIED.
5. LINE SHAFT BEARING FURNISHED ON 6'6" PUMP SETTINGS AND LONGER.
6. SQUARE COVERS AVAILABLE ONLY IN STEEL.

**AURORA SERIES 670**  
**SELECTION CHART**  
**885 R.P.M.**  
**VORTEX IMPELLER**



CAPACITY - G.P.M.