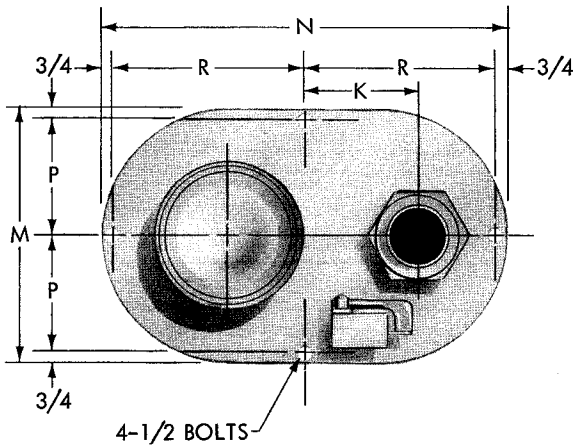
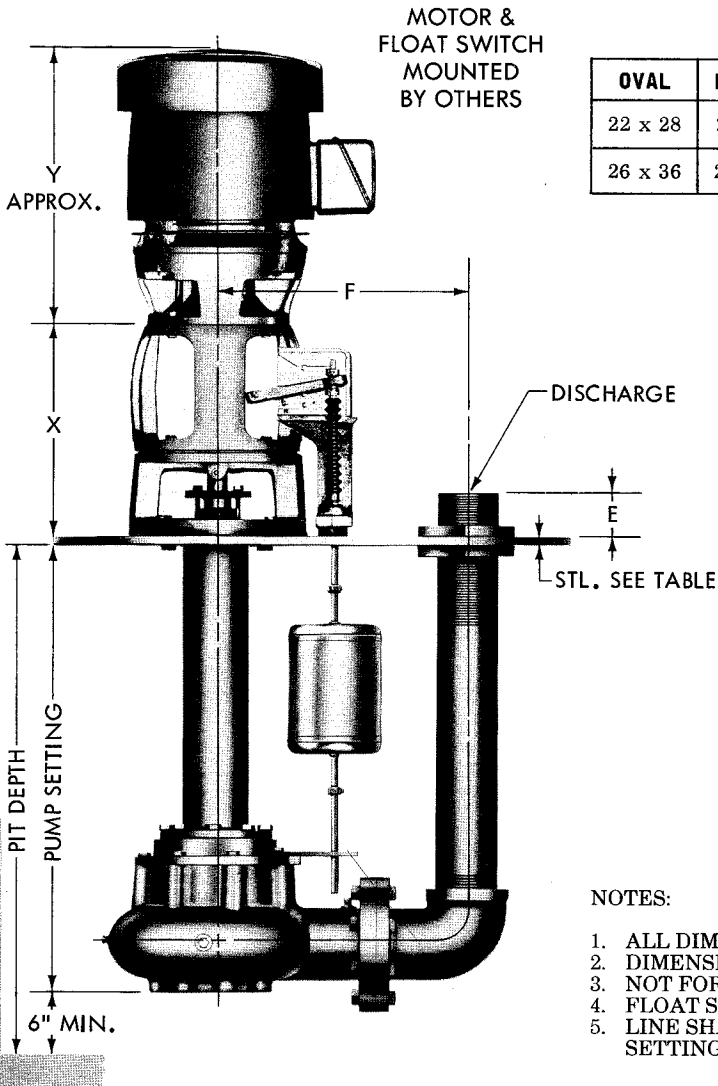


AURORA MODEL 671 PUMP ON OVAL PLATE



PUMP SIZE			E	F	K	OVAL SIZE	STL THK
DISCH	SUCTION	CASE BORE					
3	3	9	6-1/2	14-13/16	9-5/16	22 x 28	1/2
4	4	9	6	16-15/16	8-15/16	26 x 36	1/2
3	3	12	6-1/2	17-13/16	9-13/16	26 x 36	1/2
4	4	12	6	18-15/16	10-15/16	26 x 36	1/2



MOTOR & FLOAT SWITCH MOUNTED BY OTHERS

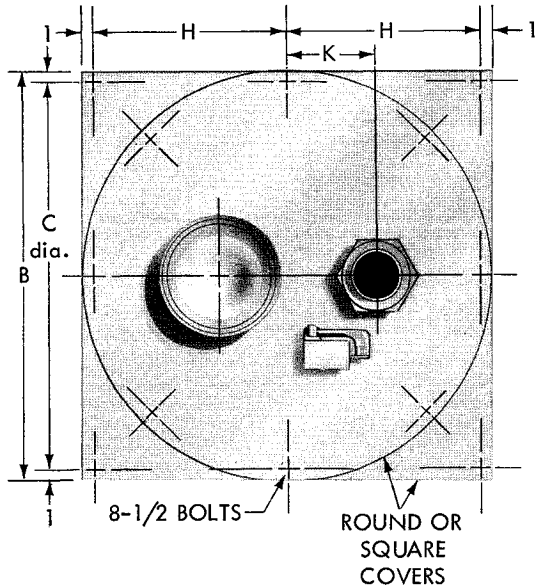
OVAL	M	N	P	R
22 x 28	22	28	10-1/4	13-1/4
26 x 36	26	36	12-1/4	17-1/4

FRAME	X	y
143HP	13-7/8	11
145HP	13-7/8	12
182HP	13-7/8	13
184HP	13-7/8	14
213HP	13-7/8	16
215HP	13-7/8	17
254HP	13-7/8	19
256HP	13-7/8	21
284HPH	15-5/8	21
286HPH	15-5/8	23
324HP	15-5/8	24
326HP	15-5/8	25
364HP	15-5/8	29
365HP	15-5/8	30

NOTES:

1. ALL DIMENSIONS IN INCHES.
2. DIMENSIONS MAY VARY $\pm 3/8"$.
3. NOT FOR CONSTRUCTION PURPOSES UNLESS CERTIFIED.
4. FLOAT SWITCH FURNISHED ONLY WHEN SPECIFIED.
5. LINE SHAFT BEARING FURNISHED ON 6'6" PUMP SETTINGS AND LONGER.

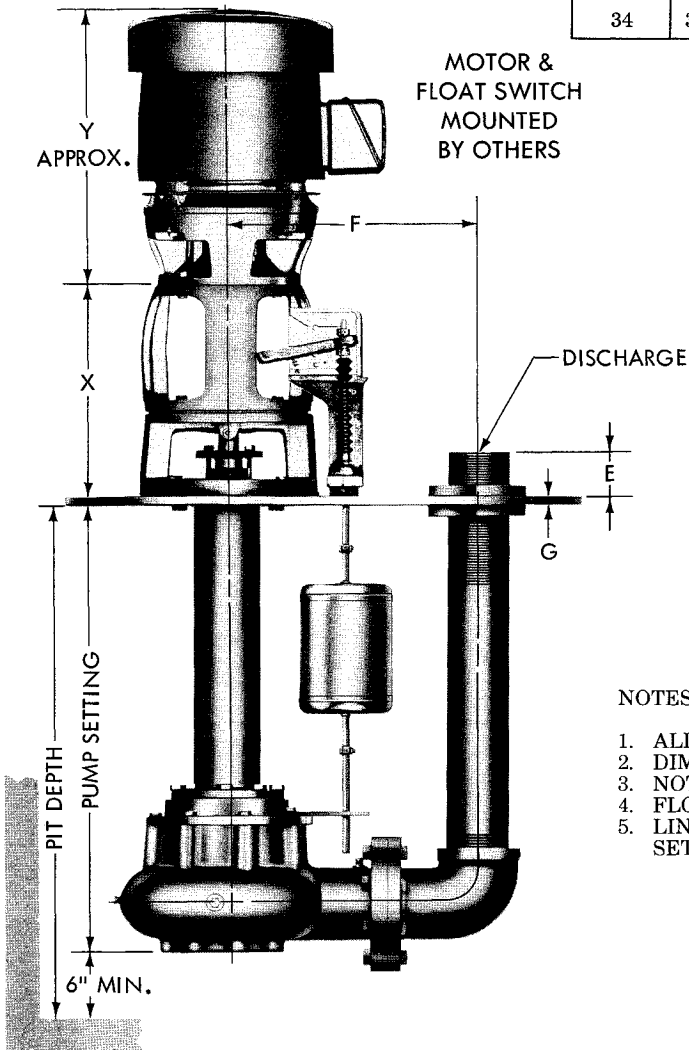
AURORA MODEL 671 PUMP ON SIMPLEX PLATE



PUMP SIZE			E	F	K	MIN. COVER SIZE
DISCH	SUCTION	CASE BORE				
3	3	9	6-1/2	14-13/16	9-5/16	28
4	4	9	6	16-15/16	8-15/16	34
3	3	12	6-1/2	17-13/16	9-13/16	34
4	4	12	6	18-15/16	10-15/16	34

COVER SIZE B	C	H	G STEEL
28	26	13	1/2
34	32	16	1/2

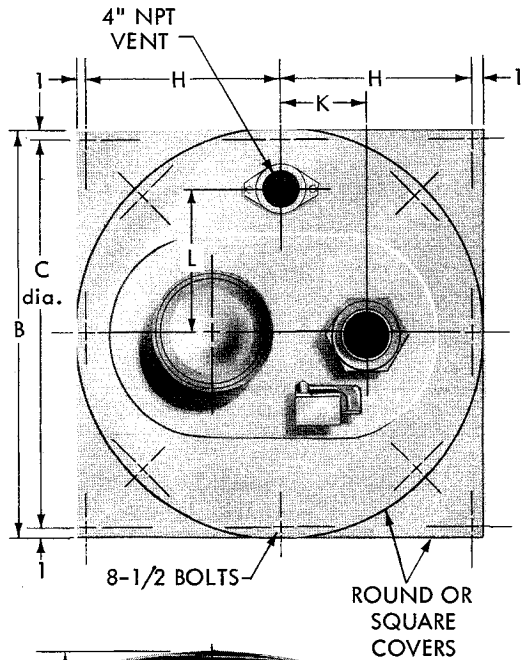
FRAME	X	Y
143HP	13-7/8	11
145HP	13-7/8	12
182HP	13-7/8	13
184HP	13-7/8	14
213HP	13-7/8	16
215HP	13-7/8	17
254HP	13-7/8	19
256HP	13-7/8	21
284HPH	15-5/8	21
286HPH	15-5/8	23
324HP	15-5/8	24
326HP	15-5/8	25
364HP	15-5/8	29
365HP	15-5/8	30



NOTES:

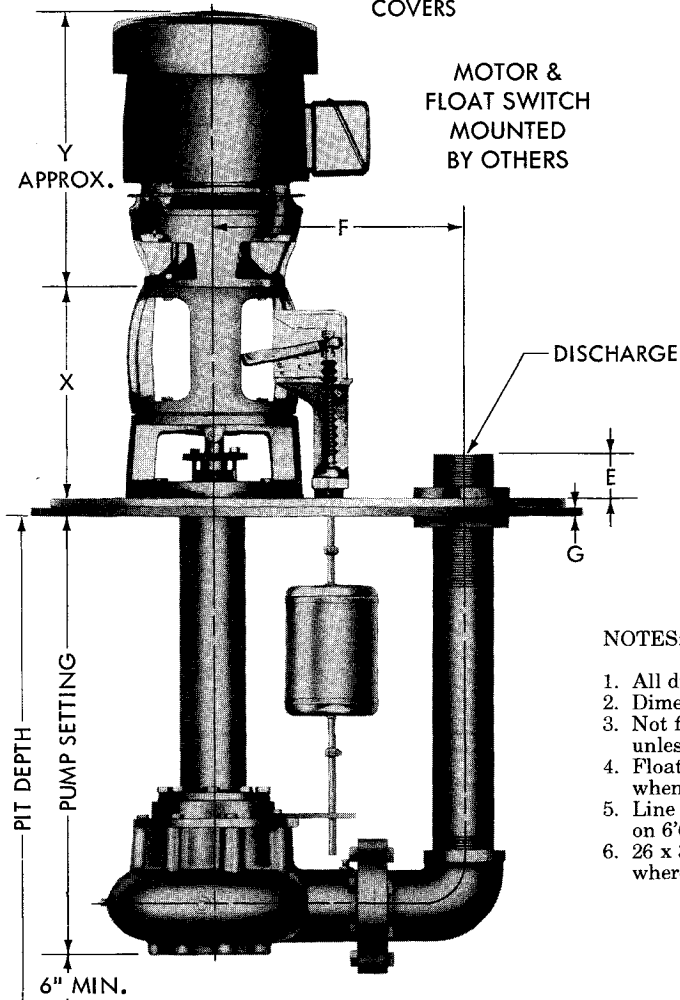
1. ALL DIMENSIONS IN INCHES.
2. DIMENSIONS MAY VARY $\pm 3/8"$.
3. NOT FOR CONSTRUCTION PURPOSES UNLESS CERTIFIED.
4. FLOAT SWITCH FURNISHED ONLY WHEN SPECIFIED.
5. LINE SHAFT BEARING FURNISHED ON 6'6" PUMP SETTINGS AND LONGER.

AURORA MODEL 671 PUMP ON SIMPLEX PLATE WITH OVAL



PUMP SIZE			E	F	K	
DISCH	SUCTION	CASE BORE			22 X 28 OVAL	26 X 36 OVAL
3	3	9	6-1/2	14-13/16	9-5/16	9-5/16
4	4	9	6	16-15/16	N.A.	8-15/16
3	3	12	6-1/2	17-13/16	N.A.	9-13/16
4	4	12	6	18-15/16	N.A.	10-15/16

COVER SIZE B	C	H	G	L
			STEEL	
46	44	22	1/2	16
53	51	25-1/2	1/2	17-3/4
60	58	29	5/8	19-1/2
66	64	32	5/8	21
78	76	38	3/4	24



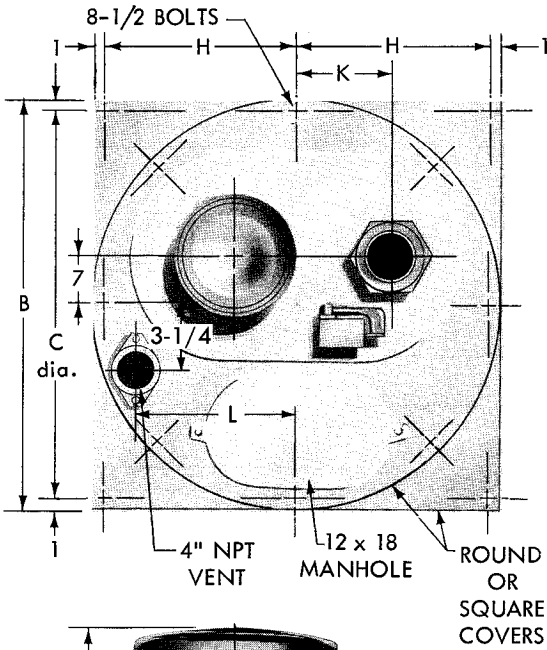
MOTOR & FLOAT SWITCH MOUNTED BY OTHERS

FRAME	X	Y
143HP	13-7/8	11
145HP	13-7/8	12
182HP	13-7/8	13
184HP	13-7/8	14
213HP	13-7/8	16
215HP	13-7/8	17
254HP	13-7/8	19
256HP	13-7/8	21
284HPH	15-5/8	21
286HPH	15-5/8	23
324HP	15-5/8	24
326HP	15-5/8	25
364HP	15-5/8	29
365HP	15-5/8	30

NOTES:

1. All dimensions in inches.
2. Dimensions may vary $\pm 3/8"$.
3. Not for construction purposes unless certified.
4. Float switch furnished only when specified.
5. Line shaft bearing furnished on 6'6" pump settings and longer.
6. 26 x 36 ovals are also available where 22 x 28 ovals are shown.

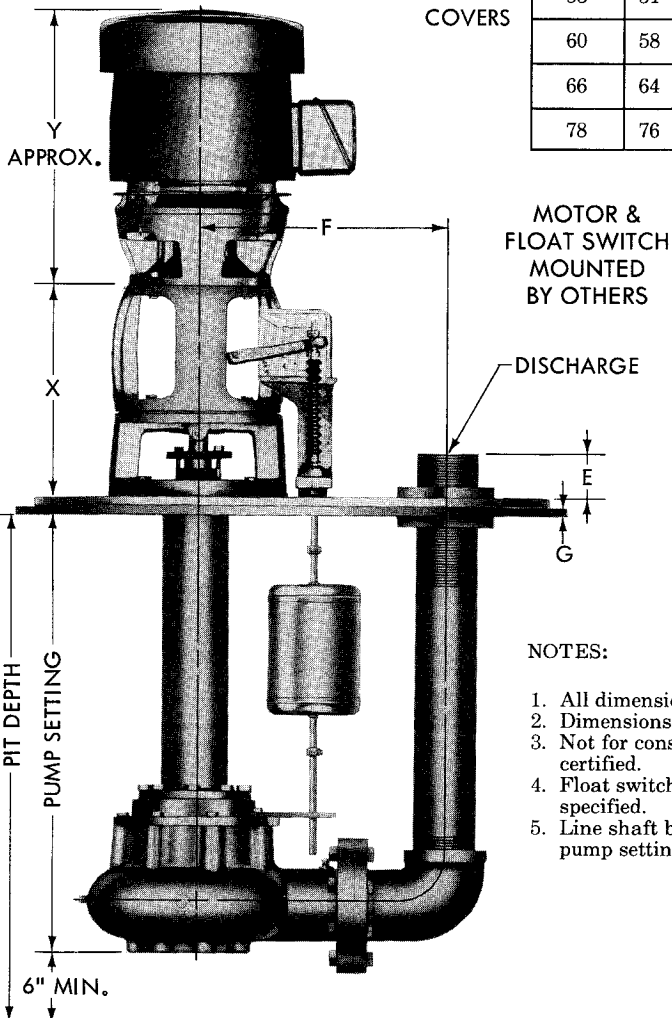
AURORA MODEL 671 PUMP ON SIMPLEX PLATE WITH OVAL AND MANHOLE



PUMP SIZE			E	F	K	OVAL SIZE	MIN. COVER SIZE
DISCH	SUCTION	CASE BORE					
3	3	9	6-1/2	14-13/16	9-5/16	26 x 36	46
4	4	9	6	16-15/16	8-15/16	26 x 36	46
3	3	12	6-1/2	17-13/16	9-13/16	26 x 36	46
4	4	12	6	18-15/16	10-15/16	26 x 36	46

COVER SIZE B	C	H	G	L
			STEEL	
46	44	22	1/2	17
53	51	25-1/2	1/2	18-3/4
60	58	29	5/8	20-1/2
66	64	32	5/8	22
78	76	38	3/4	25

FRAME	X	Y
143HP	13-7/8	11
145HP	13-7/8	12
182HP	13-7/8	13
184HP	13-7/8	14
213HP	13-7/8	16
215HP	13-7/8	17
254HP	13-7/8	19
256HP	13-7/8	21
284HPH	15-5/8	21
286HPH	15-5/8	23
324HP	15-5/8	24
326HP	15-5/8	25
364HP	15-5/8	29
365HP	15-5/8	30



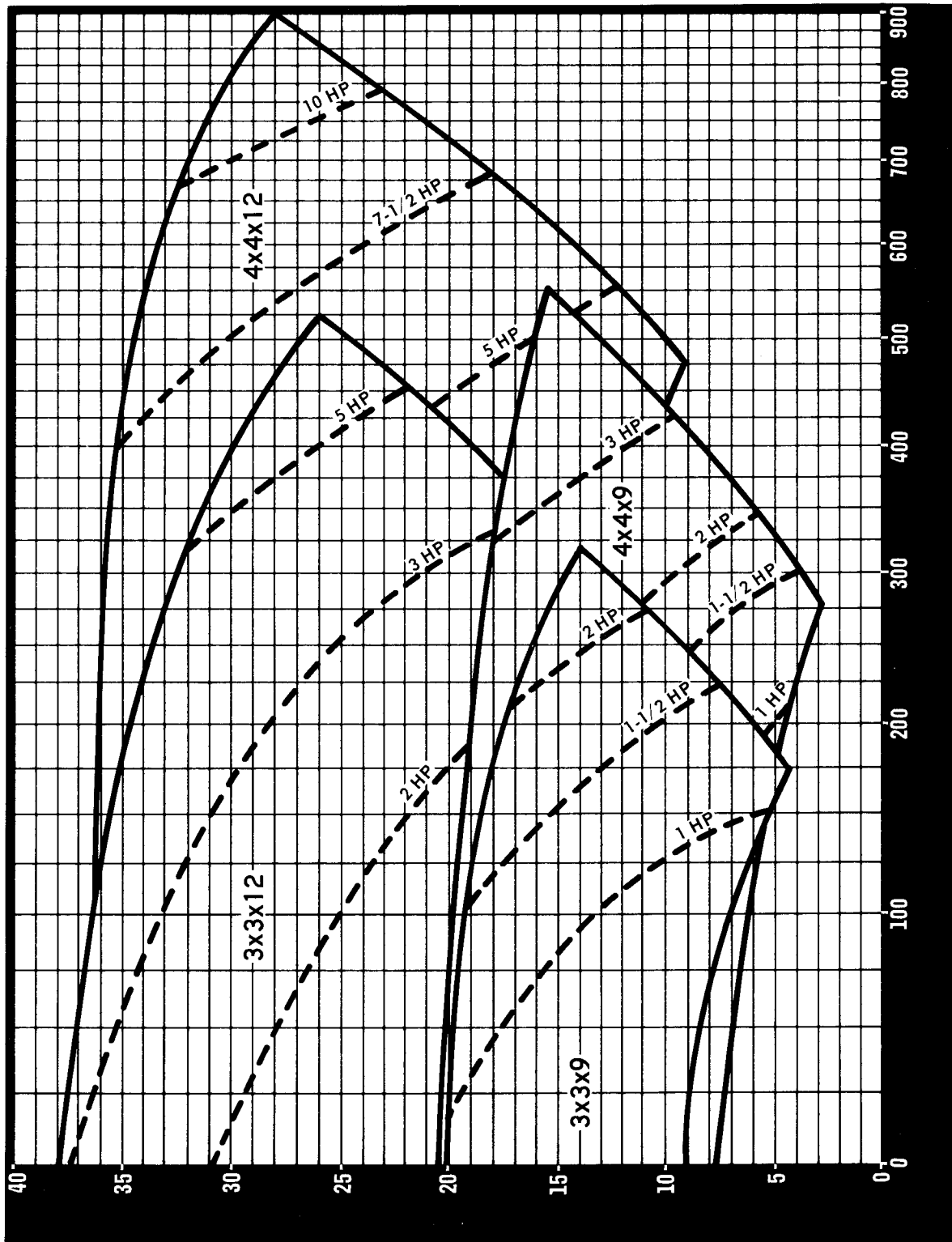
MOTOR & FLOAT SWITCH MOUNTED BY OTHERS

DISCHARGE

NOTES:

1. All dimensions in inches.
2. Dimensions may vary $\pm 3/8$ ".
3. Not for construction purposes unless certified.
4. Float switch furnished only when specified.
5. Line shaft bearing furnished on 6'6" pump settings and longer.

AURORA SERIES 670
SELECTION CHART
885 R.P.M.
VORTEX IMPELLER



CAPACITY - G.P.M.

TOTAL DYNAMIC HEAD