

670 SERIES

REPAIR PARTS INDEX

PARTS LISTED ARE FOR STANDARD PUMPS AND SOME OPTIONAL PUMP BEARINGS.

PUMP SIZE	PAGE
3 x 3 x 9	6-7
4 x 4 x 9	
3 x 3 x 12	
4 x 4 x 12	

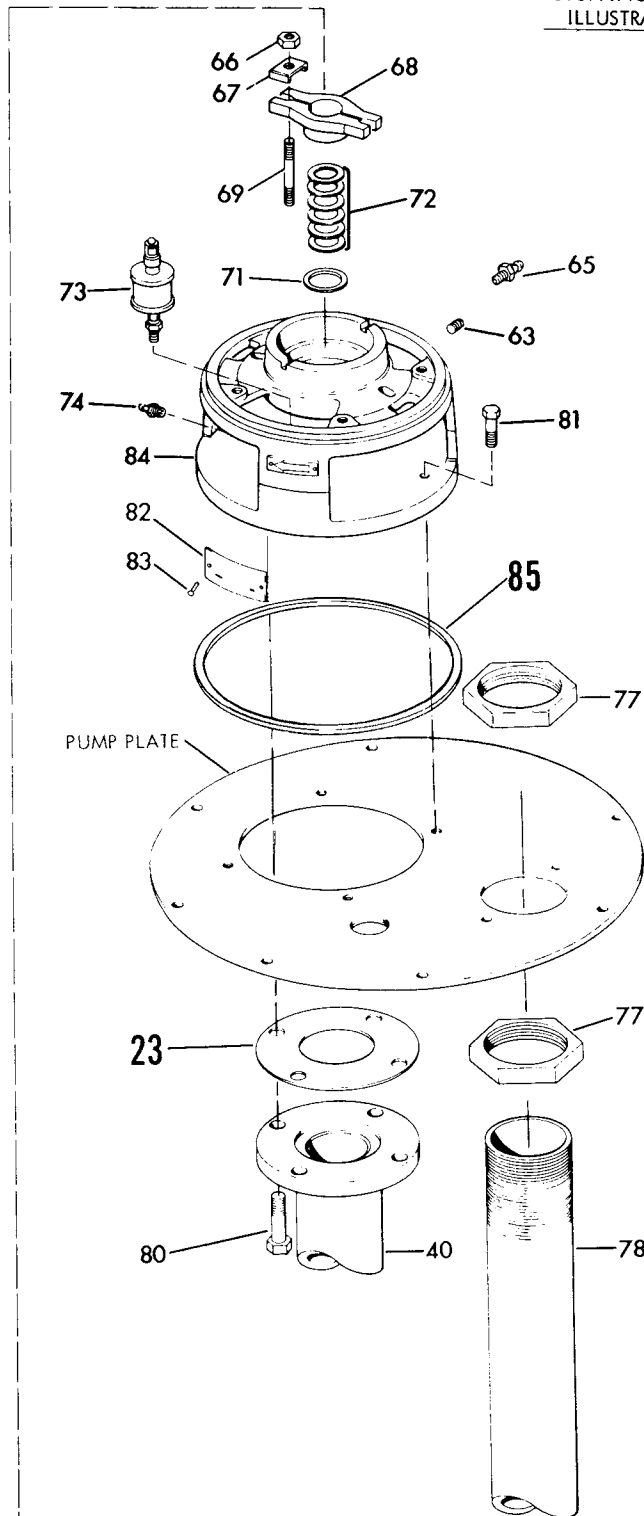
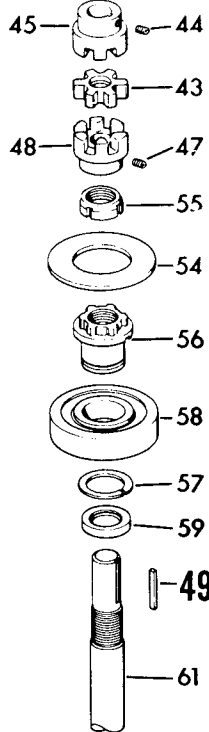
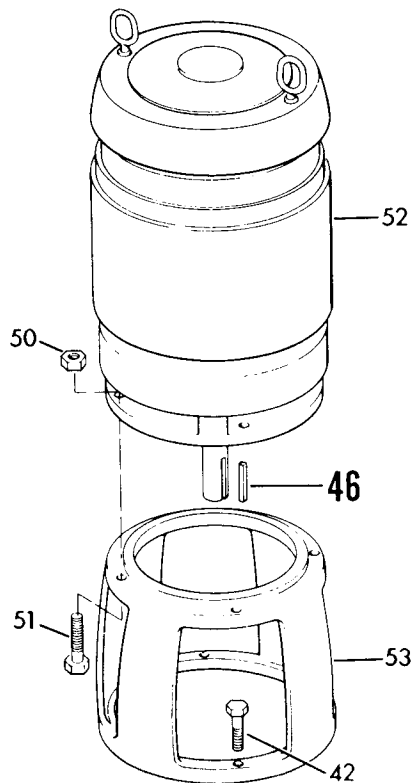
PIECE NO.

- 26 - STANDARD PUMP BEARING IS LISTED. REFER TO PART NUMBERS 27 THRU 37 FOR SPECIAL OPTION BEARINGS. FOR ALL PIT DEPTHS 10'-6" AND DEEPER, A RELIEF TYPE PUMP BEARING IS STANDARD.
- 39 - ONE SET OF FOUR (4) CAPSCREWS AND NUTS REQUIRED FOR EACH GUIDE BEARING JOINT.
- 38-40 - ONE SUPPORT PIPE IS REQUIRED FOR PIT DEPTHS UP TO 6'-0".
TWO SUPPORT PIPES ARE REQUIRED FOR PIT DEPTHS 6'-6" TO 11'-0".
THREE SUPPORT PIPES ARE REQUIRED FOR PIT DEPTHS 11'-6" TO 16'-0".
- 41 - ONE GUIDE BEARING IS REQUIRED FOR PIT DEPTHS 6'-6" TO 11'-0".
TWO GUIDE BEARINGS ARE REQUIRED FOR PIT DEPTHS 11'-6" TO 16'-0".
- 60-61 - PIT DEPTHS TO 11'-6" REQUIRE ONE SHAFT (61). PIT DEPTHS 12'-0" TO 17'-6" REQUIRES ONE PUMP SHAFT (61C), ONE HEAD SHAFT (61A) AND ONE LINE COUPLING (60).

670 SERIES

MODEL 671-672

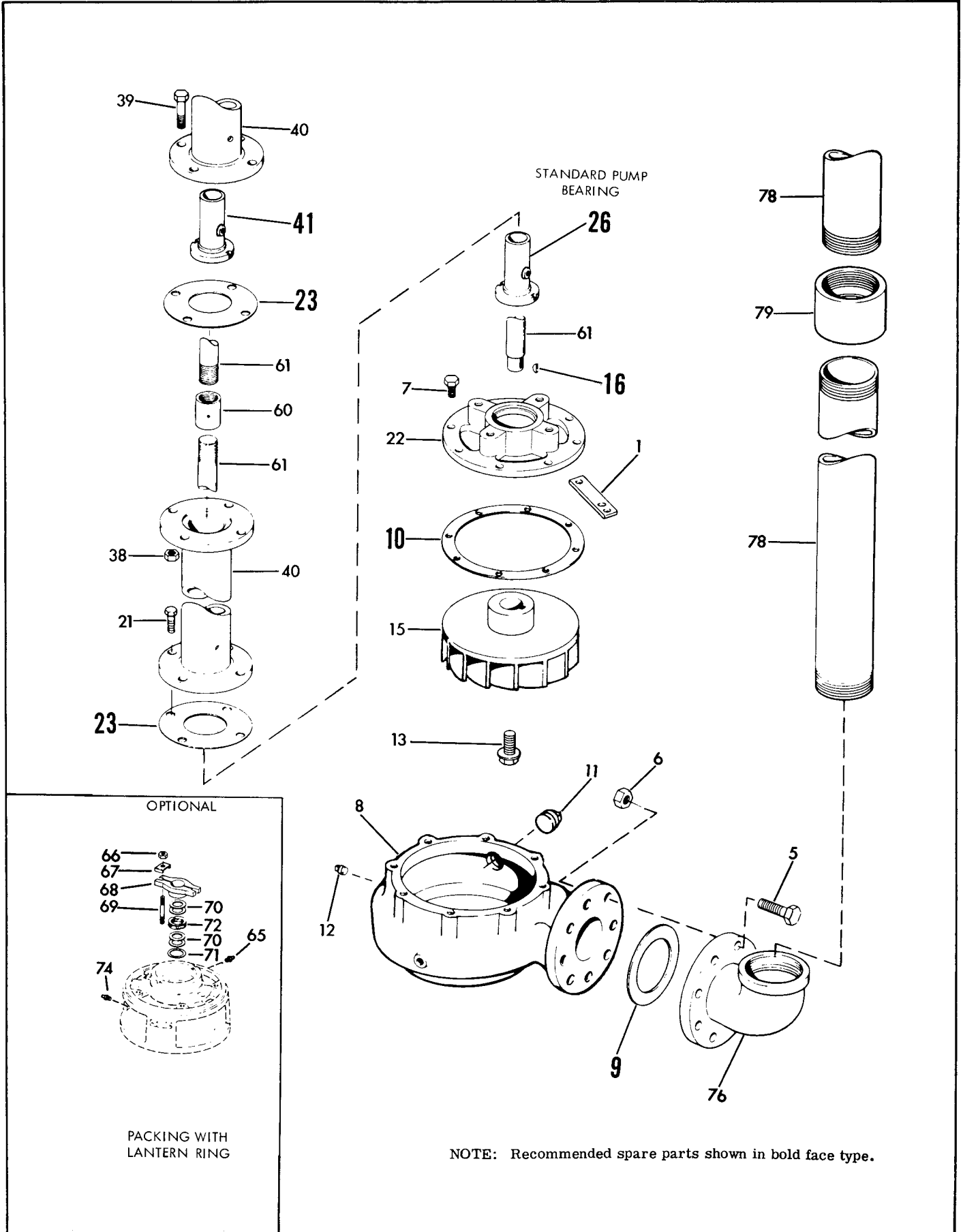
PIECE NUMBERS



670 SERIES

SECTION **670P** PAGE **3**
DATED NOVEMBER 1988
SUPERSEDES PAGE 3
DATED JUNE 1986

MODEL 671-672 PIECE NUMBERS

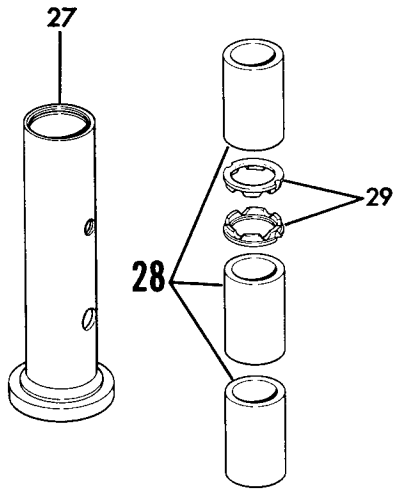


670 SERIES

MODEL 671-672 PIECE NUMBERS

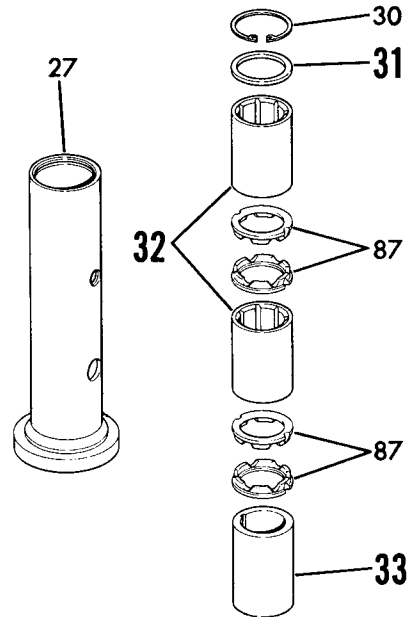
OPTIONAL RELIEF TYPE BEARINGS

GRAPHITAR



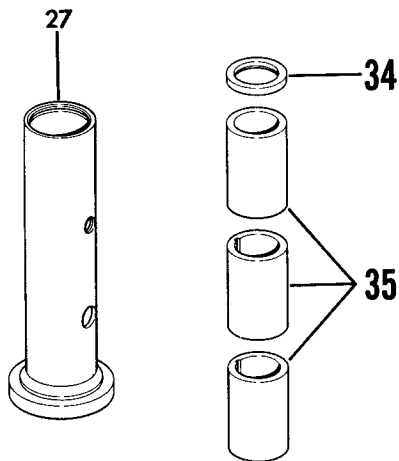
27A-COMPLETE ASSEMBLY

CUTLESS RUBBER



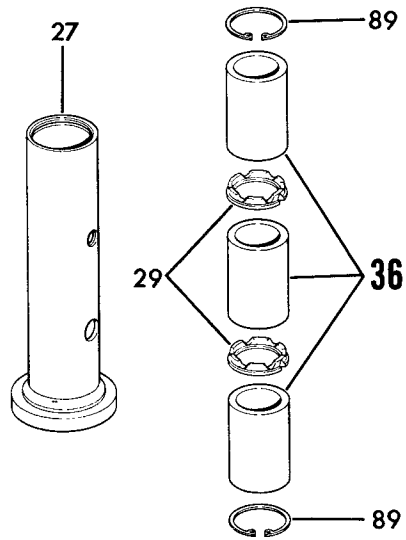
27B-COMPLETE ASSEMBLY

METAL BUSHING*



27C-COMPLETE ASSEMBLY

TEFLON



27D-COMPLETE ASSEMBLY

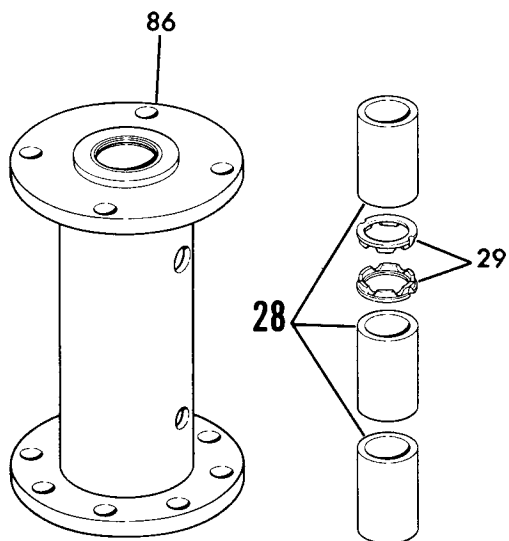
*Standard for pump settings over 10 feet.

MODEL 671-672

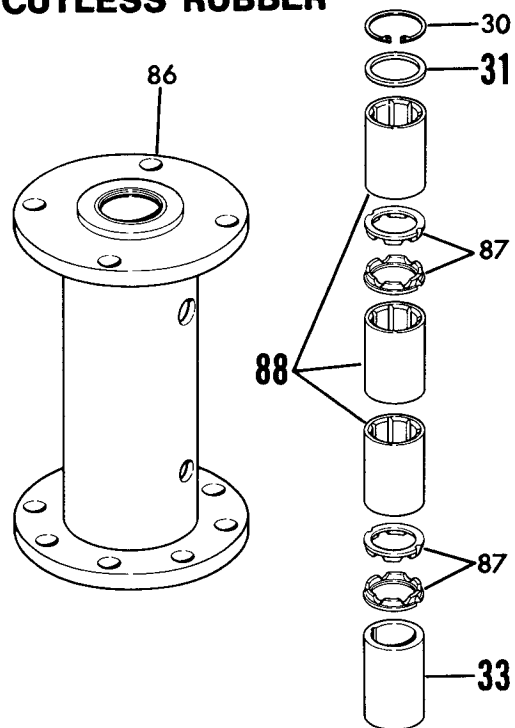
PIECE NUMBERS

OPTIONAL SPOOL TYPE BEARINGS

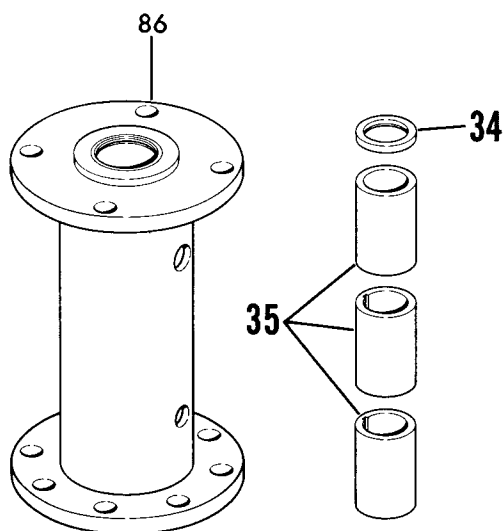
GRAPHITAR



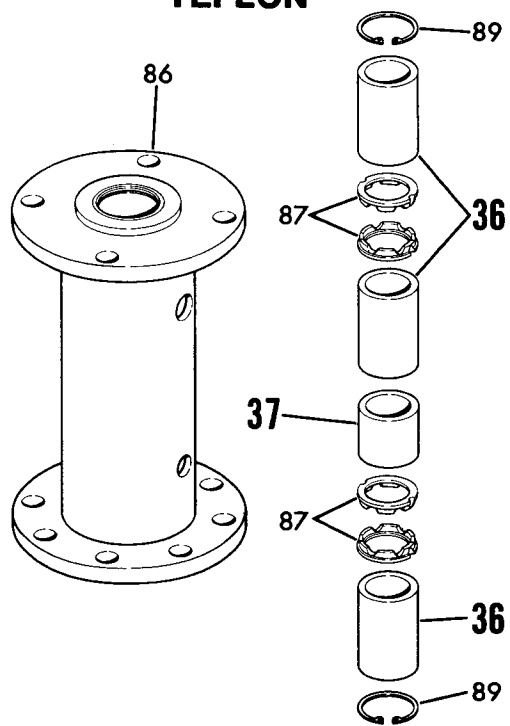
CUTLESS RUBBER



METAL BUSHING



TEFLON



PARTS LIST

PC. NO.	DESCRIPTION	QTY	PART NO.	MATERIAL			
				B.F.	A.B.	A.I.	S.S.
1	ROD GUIDE	1	396-0009	087		087	
5	CAPSCREW 3x9,3x12 4x9,4x12	4	168-0568	080		080	
		4	168-0570	080		080	
6	NUT	4	544-0115	080		080	
7	CAPSCREW 3x9,4x9 3x12,4x12	8	168-0490	080		080	
		8	168-0560	080		080	
8	CASING 3x9 4x9 3x12 4x12	1	180-0655	010		010	
		1	180-0656	010		010	
		1	180-0657	010		010	
		1	180-0658	010		010	
9	GASKET 3x9,3x12 4x9,4x12	1	364-0605	579		579	
		1	364-0607	579		579	
10	GASKET 3x9,4x9 3x12,4x12	1	364-1015	603		603	
		1	364-1326	803		803	
11	PLUG	1	600-0006	028		028	
12	PLUG	4	600-0005	028		028	
13	IMPELLER SCREW	1	544-2047	104		104	
15	IMPELLER 3x9 4x9 3x12 4x12	1	443-1098	010		010	
		1	443-1099	010		010	
		1	443-1100	010		010	
		1	443-1101	010		010	
16	KEY	1	472-0018	087		087	
21	CAPSCREW	4	168-0562	080		080	
22	COVER 3x9,4x9 3x12,4x12	1	260-0671	010		010	
		1	260-0672	010		010	
23	GASKET		364-1021	588		588	
26	PUMP BEARING	1	136-1402	208		010	
27	BRG. HOUSING	1	260-0701	087		087	
	OPTIONAL RELIEF TYPE BEARINGS-COMplete ASSY. BEFORE MARCH 1986						
27A	GRAPHITAR	1	032-1246	NOT			
27B	CUTLESS RUBBER	1	032-1245	AVAILABLE			
27C	METAL BUSHING	1	032-1247	USE NEW			
27D	TEFLON	1	032-1248	DESIGN			
28	BUSHING	3	136-1170	540	540	540	540
29	LANTERN RING	1	676-1681	512	512	512	512
30	SNAP RING	1	676-0220	088	104	088	104
31	RETAINING RING	1	676-1996	079	190	079	104
32	BUSHING	2	136-1379	457	457	457	457
33	BUSHING	1	136-1172	208	208	010	104

PC. NO.	DESCRIPTION	QTY	PART NO.	MATERIAL			
				B.F.	A.B.	A.I.	S.S.
34	SEAL	1	712-0047	653	653	653	
35	BUSHING	3	136-1172	208	208	010	
36	BUSHING	3	136-1585	522	522	522	522
37	BUSHING	1	136-1172	208	208	010	104
	AFTER MARCH 1986						
27A	GRAPHITAR	1	032-1246	644	643	642	646
27B	CUTLESS RUBBER	1	032-1245	644	643	642	646
27C	METAL BUSHING	1	032-1247	644	643	642	
27D	TEFLON	1	032-1248	644	643	642	646
28	BUSHING	1	136-1170	540	540	540	540
32	BUSHING	2	136-1617	486	486	486	486
33	BUSHING	1	136-1172	208	208	010	104
35	BUSHING	3	136-1172	208	208	010	
36	BUSHING	3	136-1615	485	485	485	485
37	BUSHING	1	136-1625	485	485	485	485
38	NUT		544-0115	080		080	
39	CAPSCREW		168-0562	087		087	
40	SUPPORT PIPE		REFER TO	FACTORY			
41	BEARING		136-1402	208		010	
42	CAPSCREW	4	168-0490	080		080	
43	INSERT		REFER TO	SECTION	1000P		
44	SETSCREW		REFER TO	SECTION	1000P		
45	COUPLING HALF		REFER TO	SECTION	1000P		
46	KEY		REFER TO	FACTORY			
47	SETSCREW		REFER TO	SECTION	1000P		
48	COUPLING HALF		REFER TO	SECTION	1000P		
49	KEY	1	472-0250	087		087	
50	NUT		REFER TO	FACTORY			
51	CAPSCREW		REFER TO	FACTORY			
52	MOTOR		REFER TO	FACTORY			
53	UPPER HEAD 143HP-256HP 284HP-326HP	1	116-0346	010		010	
		1	116-0347	010		010	
54	SLINGER	1	764-0401	478		478	
55	LOCKNUT	1	544-1108	080		080	
56	BEARING COLLAR	1	224-0163	208		208	
57	RETAINING RING	1	676-0289	088		088	
58	BEARING	1	068-2023	647		647	
59	SEAL	1	712-0146	653		653	
60	COUPLING	1	256-2014	062		062	

