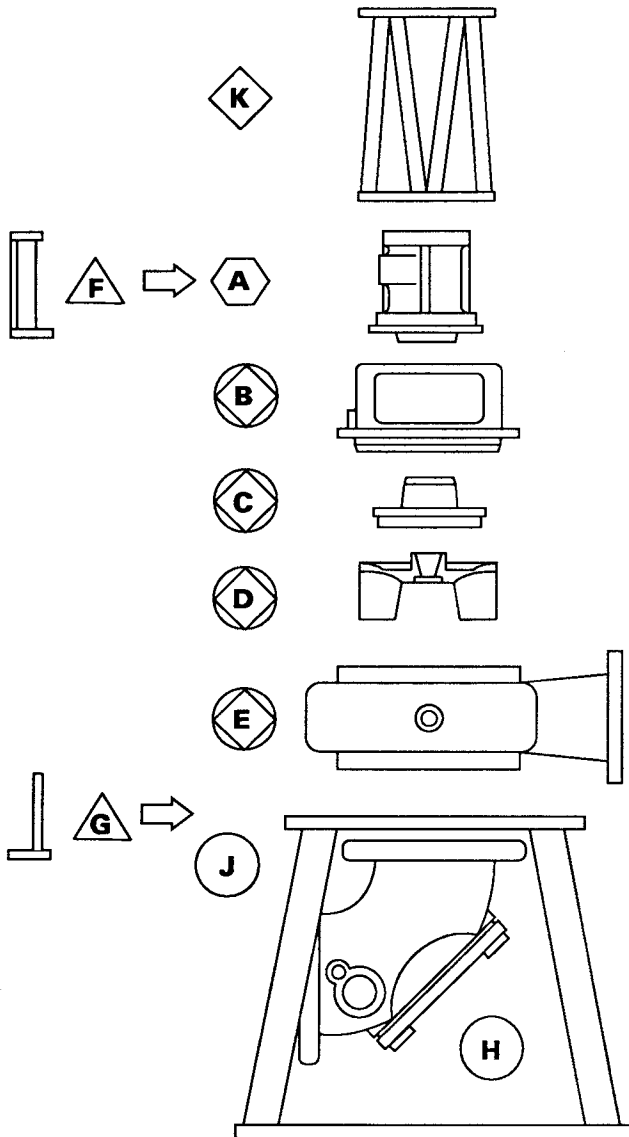


ENGINEERING DATA

INTERCHANGEABILITY

Non-Clog pumps are designed for maximum interchangeability. All models are available in all 6 sizes, offering a model and size precisely fitted to the installation requirements over a wide range of capacities. The 6 sizes are divided into 3 "Power Frames". Within a given power frame, all parts are interchangeable except for the liquid end and supports. The chart illustrates the degree of interchangeability achieved with the standard non-clog vortex pumps.



- Model 661A Only▲
- Model 663A Only◇
- Models 662A, 663A, & 664A○
- Models 661A, 662A, & 663A⬡
- Models 661A, 662A, 663A, & 664A⊗

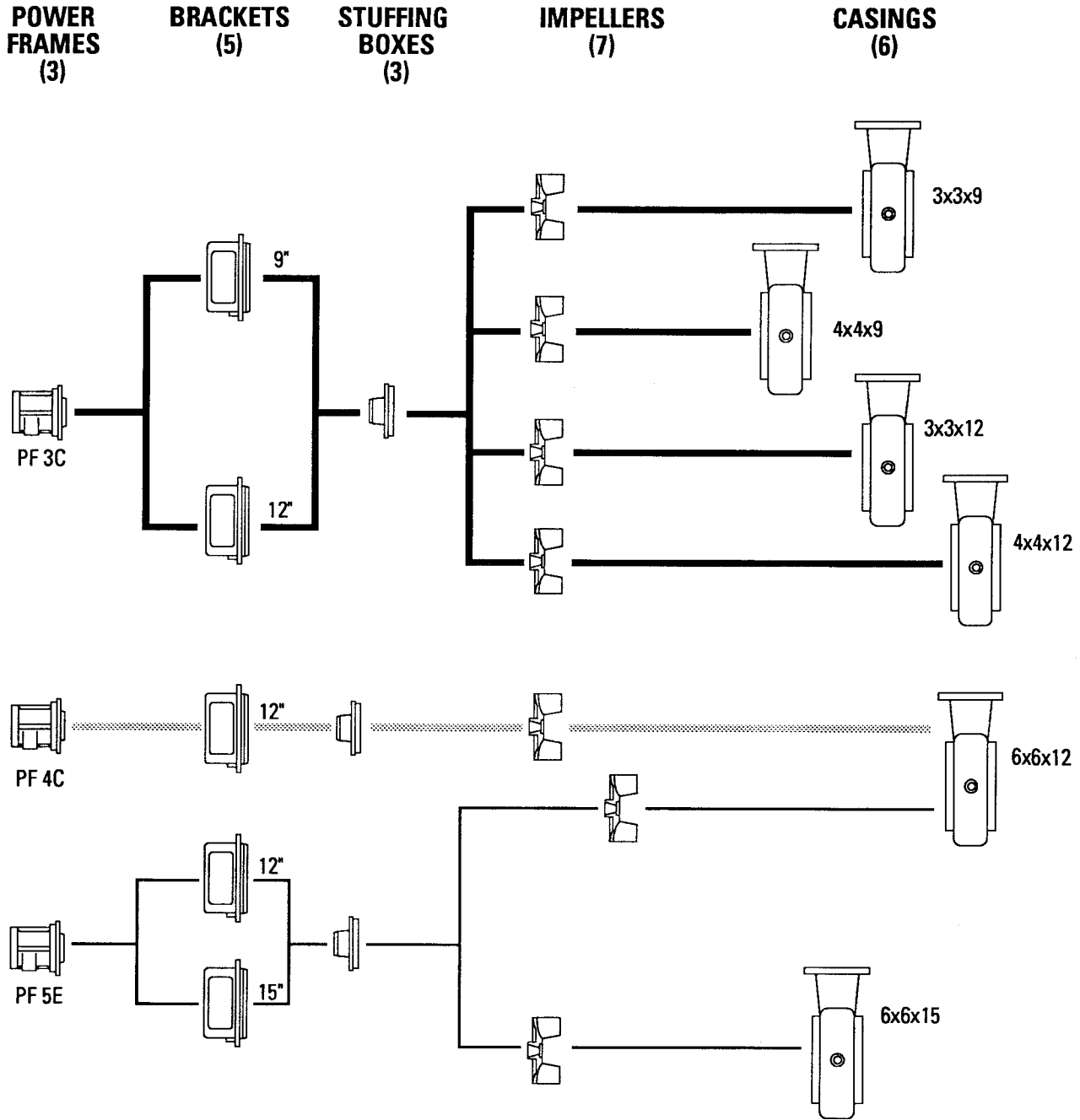
	Qty
A - Power Frames	3
B - Brackets	5
C - Stuffing Boxes	3
D - Impellers	7
E - Casings	6
F - Mounting Feet (Rear)	3
G - Mounting Feet (Front)	3
H - Elbows	3
J - Bases	2
K - Motor Supports	3

POWER FRAME SELECTION

PUMP SIZE	POWER FRAME	RPM			
		1750	1150	875	700
3x3x9	3C	3C	3C		
4x4x9	3C	3C	3C		
3x3x12	3C	3C	3C		
4x4x12	3C	3C	3C		
6x6x12	5E	4C	4C		
6x6x15		5E	5E	5E	

AURORA 660A SERIES ENGINEERING DATA

INTERCHANGEABILITY



AURORA MODEL 660 PUMP SPLIT PACKING BOX OPTION

SECTION 660 PAGE 165

DATED NOVEMBER 1988

POWER FRAMES 4 & 5 ONLY



Optional Split Packing Box
With Leakage Accumulator
Gland Illustrated

Split packing boxes separate vertically through the packing insert to simplify packing replacement and shaft sleeve inspection. The insert halves are dowed, register aligned and gasketed to prevent leakage. Only six bolts need be removed to expose all of the packing and lantern ring. Remove two more bolts and the remaining packing box insert half can be removed.

The completely exposed packing and sleeve area coupled with the extra large access openings in the pump adapter provides the ultimate in packing accessibility.

Five (5) die-molded, diagonally split, packing rings complete with lantern ring line the stuffing box. The general service packing consists of graphited fiber.

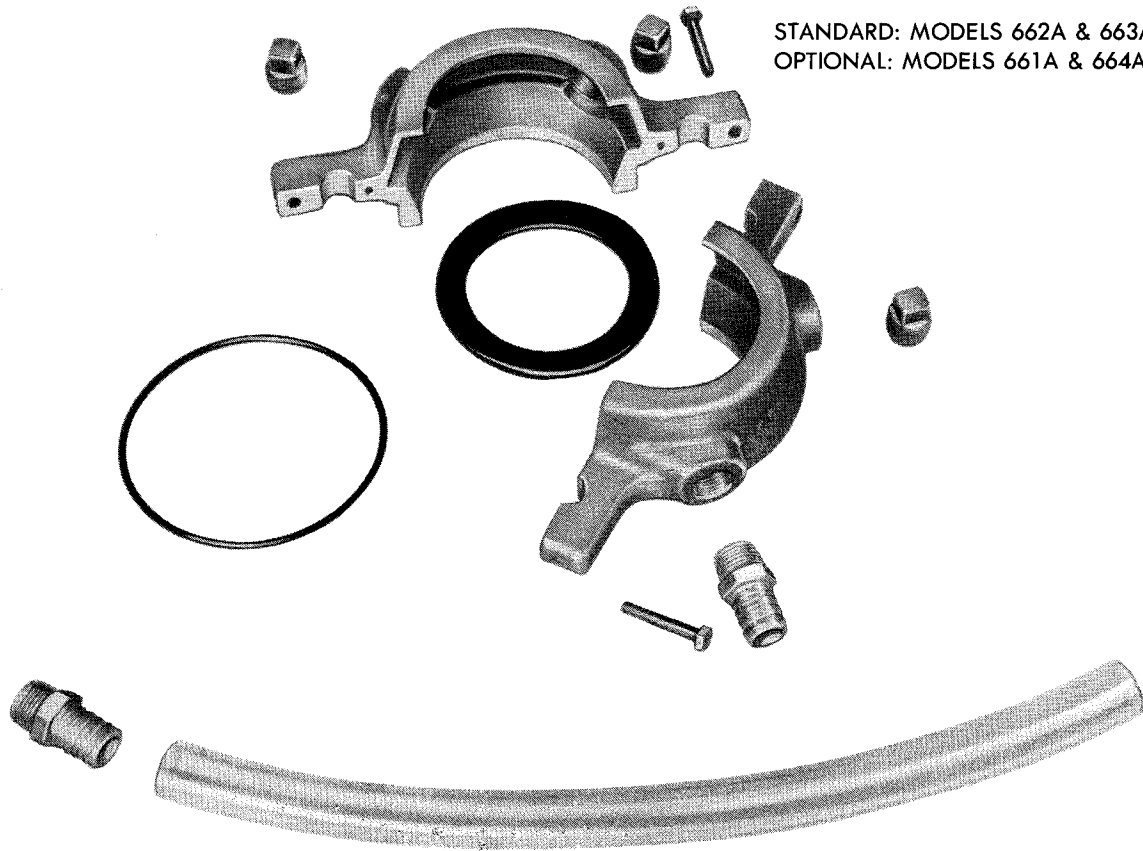
The stuffing box length, bore, sleeve diameters and lantern ring width conform with the recommended standard of the Mechanical Packing Association (MPA).

A tapped opening is provided for lubricating the stuffing box. Lubrication is accomplished by adding grease directly into the lantern ring cavity through a grease fitting or by connecting a by-pass line between the pump discharge and the stuffing box. Automatic grease seals as well as other flushing options are also available.

The standard 450 minimum brinell hardened stainless steel shaft sleeve extends through the entire length of the box and gland and is provided with a snap ring. This snap ring design allows the sleeve and the completely assembled packing box to be removed intact. Reassembly can be accomplished in the same manner. Assemble the complete stuffing box at the convenience of the work bench, install and adjust the packing for proper lubrication leakage (5-10 drops per minute after run-in).

LEAKAGE ACCUMULATOR

POWER FRAMES 4 & 5 ONLY



STANDARD: MODELS 662A & 663A
 OPTIONAL: MODELS 661A & 664A

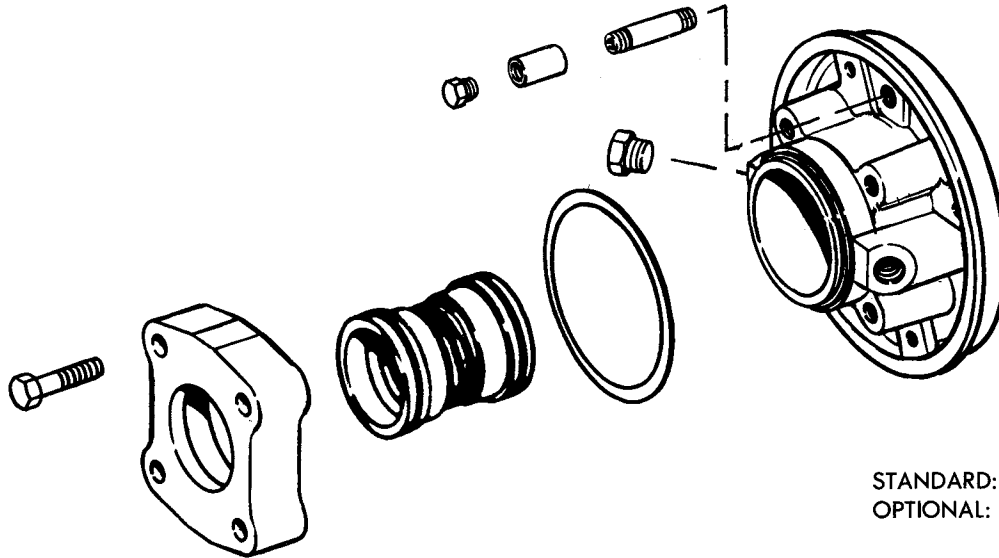
The leakage accumulator gland (sprayless, dripless packing gland) is designed and constructed to prevent the collection of packing leakage in the pump bracket of a vertical or horizontally mounted pump. The leakage accumulator gland has a volute shape with two symmetrical halves. This gland encloses the water slinger preventing any spray from escaping and contaminating the area. The leakage is efficiently directed to a drain connection.

The two gland halves are doweled, bolted together, and sealed at the parting line with a soft liquid sealant. An "O" ring seal between the gland and packing box prevents any leakage in this area. One of the pipe tap ports on the side of the gland is fitted with a hose connector and a clear plastic section of hose, to both drain off and allow visual inspection of the leakage. The remaining ports have pipe plugs, but may be used for maintenance purposes to flush & drain debris from the accumulator.

AURORA MODEL 660 PUMP OPTIONS

SECTION 660 PAGE 167

DATED NOVEMBER 1988



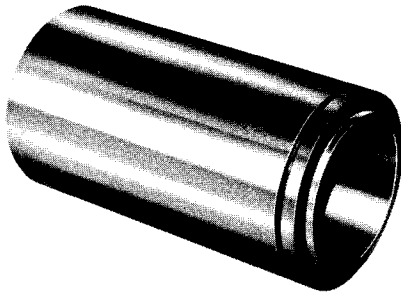
STANDARD: MODEL 664A
OPTIONAL: MODELS 661A, 662A & 663A

Double mechanical seals are recommended for gritty or abrasive applications. Seal faces are protected by clear water under pressure, injected directly into the seal cavity. Pressure in the seal box must be fifteen (15) lbs. higher than the operating pressure at the stuffing box of the pump. This forces the inner sealing faces closed and provides both faces with a film of clear sealant. If this is not done, abrasive particles may be forced under the sealing faces hastening wear. Even when the pump is not running, a pressure differential, or at least equal pressure in the seal box, is desirable. The sealant circulation for most pumping operations may be dead ended in the stuffing box. Pressures over 30 psi or RPM of 1200 max. require constant circulation to prevent overheating.

The seal box is designed for the compressed seal length and does not require any adjustments. The seal housing is extra large to provide excellent circulation of clear sealing liquid. The housing also has two tapped openings 180° apart for the flushing connections.

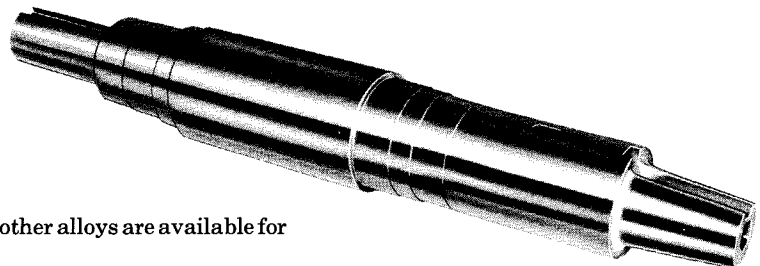
The standard shaft sleeve design is provided with a snap ring which allows the sleeve and the completely assembled seal box to be removed intact. Reassembly can be accomplished in the same manner. Assemble the complete seal box at the convenience of the work bench and install.

SLEEVES



Shaft sleeves, machined to close tolerances are optionally available in either bronze, 316 stainless steel, or monel.

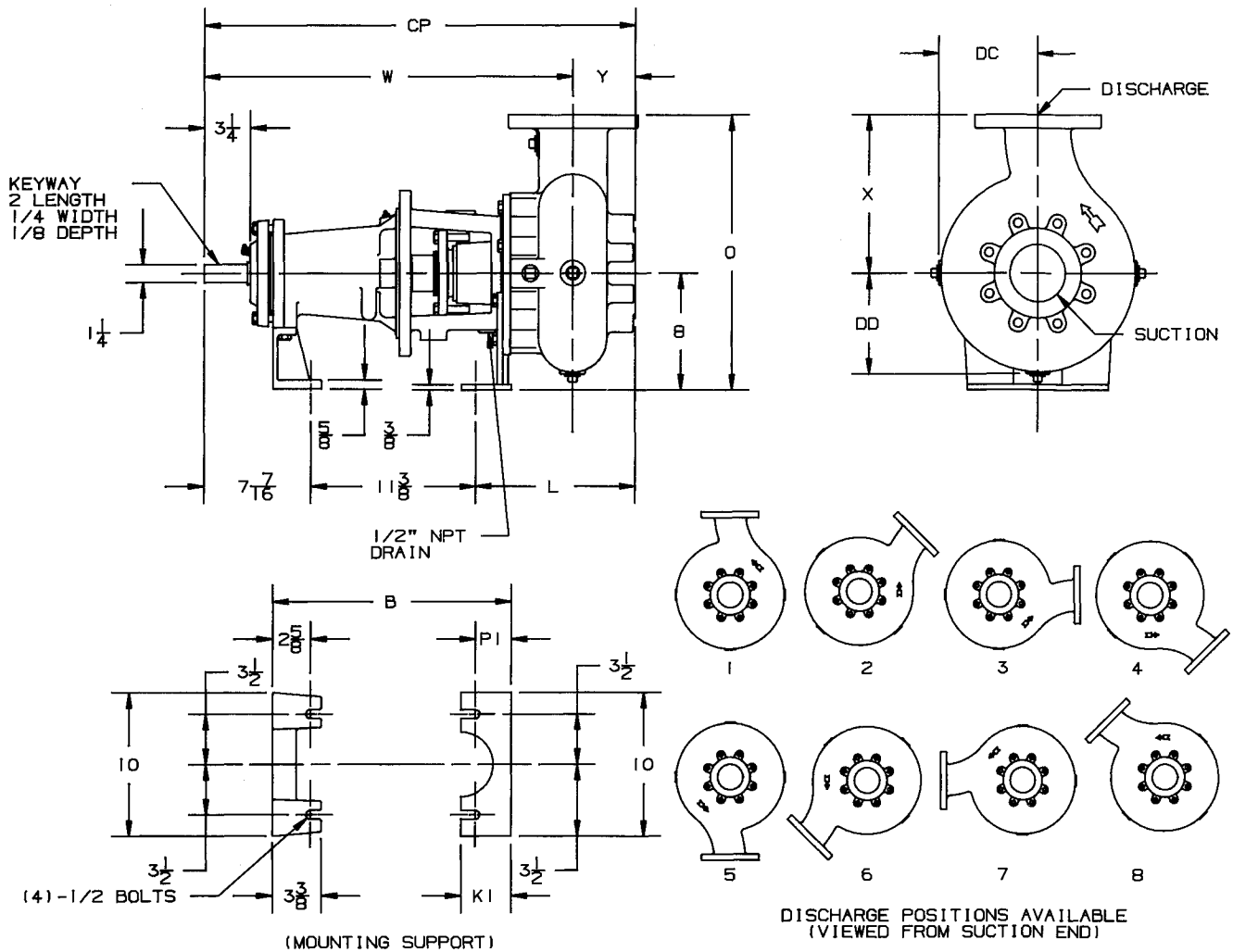
SHAFTS



Precision machined shafts of stainless steel, monel and other alloys are available for difficult application.

AURORA MODEL 661A PUMP 3" & 4" PUMPS

SECTION 660 PAGE 201
DATED NOVEMBER 1988
SUPERSEDES PAGE 201
DATED FEBRUARY 1973

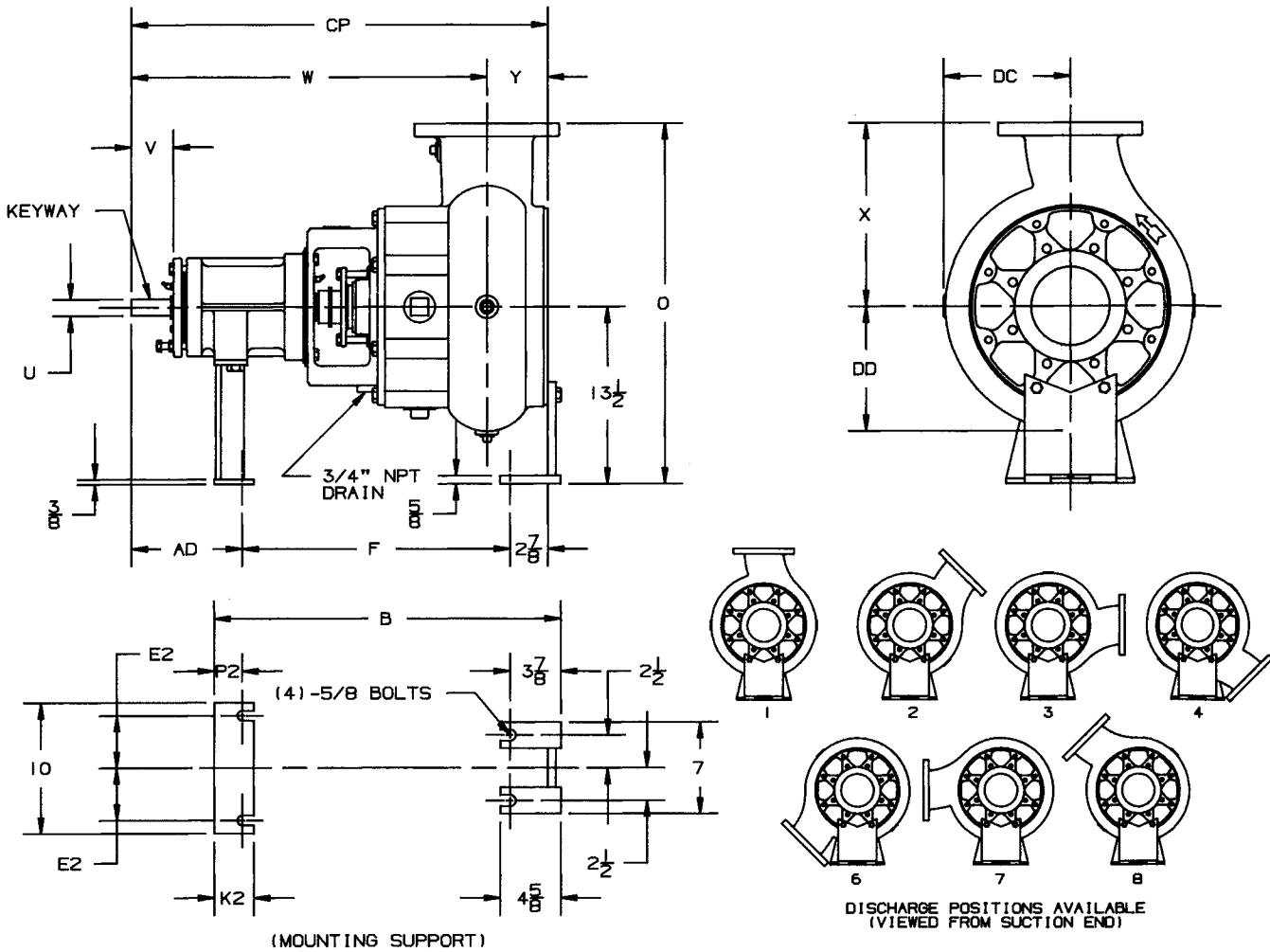


- NOTES:
1. ALL DIMENSIONS IN INCHES.
 2. DIMENSIONS MAY VARY $\pm 1/4"$.
 3. NOT FOR CONSTRUCTION PURPOSES UNLESS CERTIFIED.
 4. TWO (2) 1/2" NPT CONNECTIONS 180° APART, ON THE STUFFING BOX FOR LUBRICATION PURPOSES ARE FURNISHED AS STANDARD. ON PACKED PUMPS AN ALEMITE FITTING IS PROVIDED IN ONE TAP AND THE REMAINING TAP IS PLUGGED.
 5. DISCHARGE POSITION 1 IS FURNISHED AS STANDARD UNLESS SPECIFIED.
 6. SUCTION AND DISCHARGE FLANGES ARE AMERICAN STANDARD 125 LBS.
 7. CHECK DISCHARGE POSITION, CASING DIMENSIONS WHICH EXCEED 8" MAY REQUIRE PADS FOR THE PUMP AND/OR MOTOR.

DISCH SUCT CASE BORE	POWER FRAME	B	L	O	PI	W	X	Y	CP	DC	DD
3x3x9	3C	16 1/2	9 13/16	18	2 1/2	25 1/2	10	3 1/8	28 5/8	6 3/4	6 3/4
3x3x12	3C	16 3/8	9 15/16	21	2 3/8	25 5/8	13	3 1/8	28 3/4	8 3/8	8 3/8
4x4x9	3C	16 1/2	11 1/16	19	2 1/2	26 1/2	11	3 3/8	29 7/8	7 1/4	7 1/4
4x4x12	3C	16 3/8	11 3/16	21	2 3/8	26 5/8	13	3 3/8	30	8 7/8	8 7/8

AURORA MODEL 661A PUMP

6" PUMPS



- NOTES:
1. ALL DIMENSIONS IN INCHES.
 2. DIMENSIONS MAY VARY $\pm 1/4"$.
 3. NOT FOR CONSTRUCTION PURPOSES UNLESS CERTIFIED.
 4. TWO (2) 1/2" NPT CONNECTIONS 180° APART, ON THE STUFFING BOX FOR LUBRICATION PURPOSES ARE FURNISHED AS STANDARD. ON PACKED PUMPS AN ALEMITE FITTING IS PROVIDED IN ONE TAP AND THE REMAINING TAP IS PLUGGED.
 5. DISCHARGE POSITION 1 IS FURNISHED AS STANDARD UNLESS SPECIFIED.
 6. SUCTION AND DISCHARGE FLANGES ARE AMERICAN STANDARD 125 LBS.

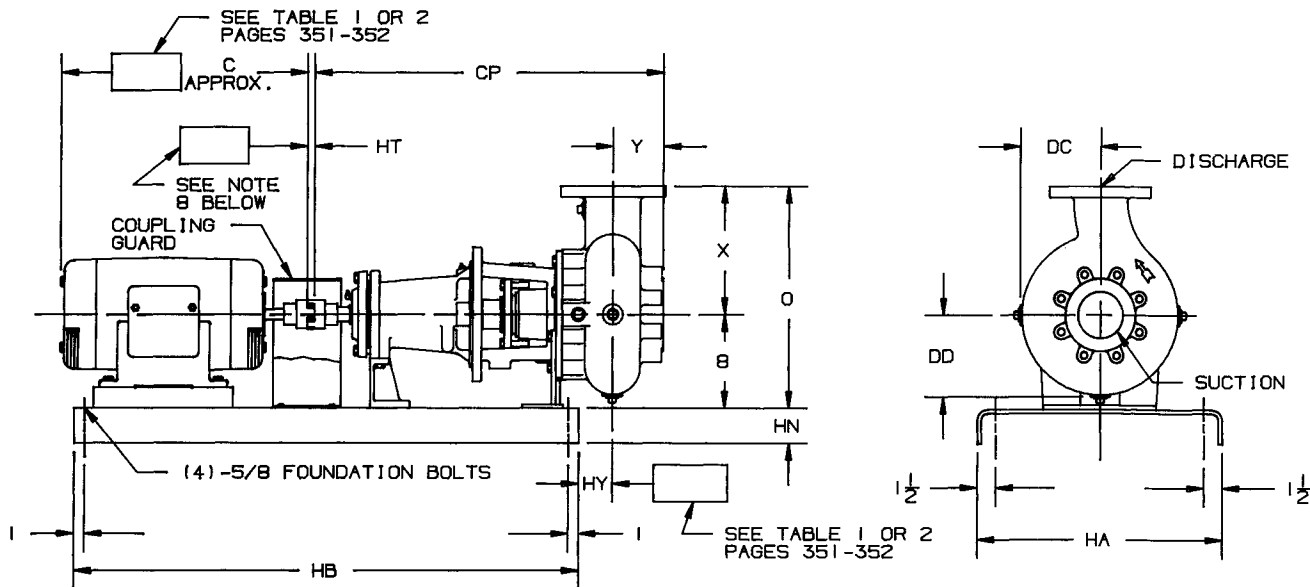
POWER FRAME	U	V	KEYWAY		
			LENGTH	WIDTH	DEPTH
4C	1 1/4	3 3/16	2	1/4	1/8
5E	2 3/8	6 3/8	4	5/8	5/16

DISCH SUCT CASE BORE	POWER FRAME	B	E2	F	K2	O	P2	W	X	Y	AD	CP	DC	DD
6x6x12	4C	26 1/2	4	20 1/2	3	27 1/2	2 1/8	27 1/8	14	4 5/8	8 3/8	31 3/4	9 7/8	9 7/8
6x6x12	5E	32 3/4	3 3/4	26 1/8	4	27 1/2	2 3/4	38 1/8	14	4 5/8	13 3/4	42 3/4	9 7/8	9 7/8
6x6x15	5E	32 3/4	3 3/4	26 1/8	4	29 1/2	2 3/4	38 1/8	16	4 5/8	13 3/4	42 3/4	11 1/16	11 1/16

AURORA MODEL 661A PUMP

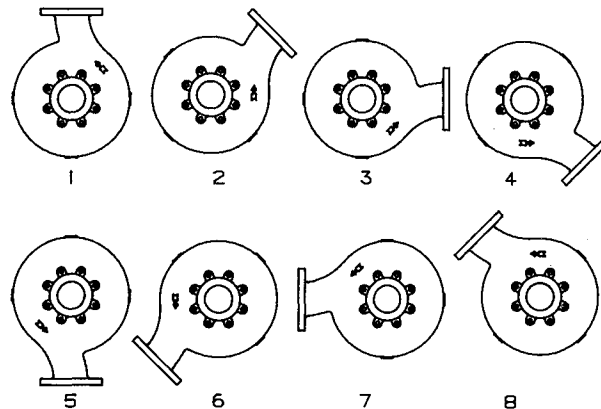
3" & 4" PUMPS FORMED STEEL BASE

SECTION 660 PAGE 251
DATED NOVEMBER 1988
SUPERSEDES PAGE 251
DATED DECEMBER 1975



NOTES:

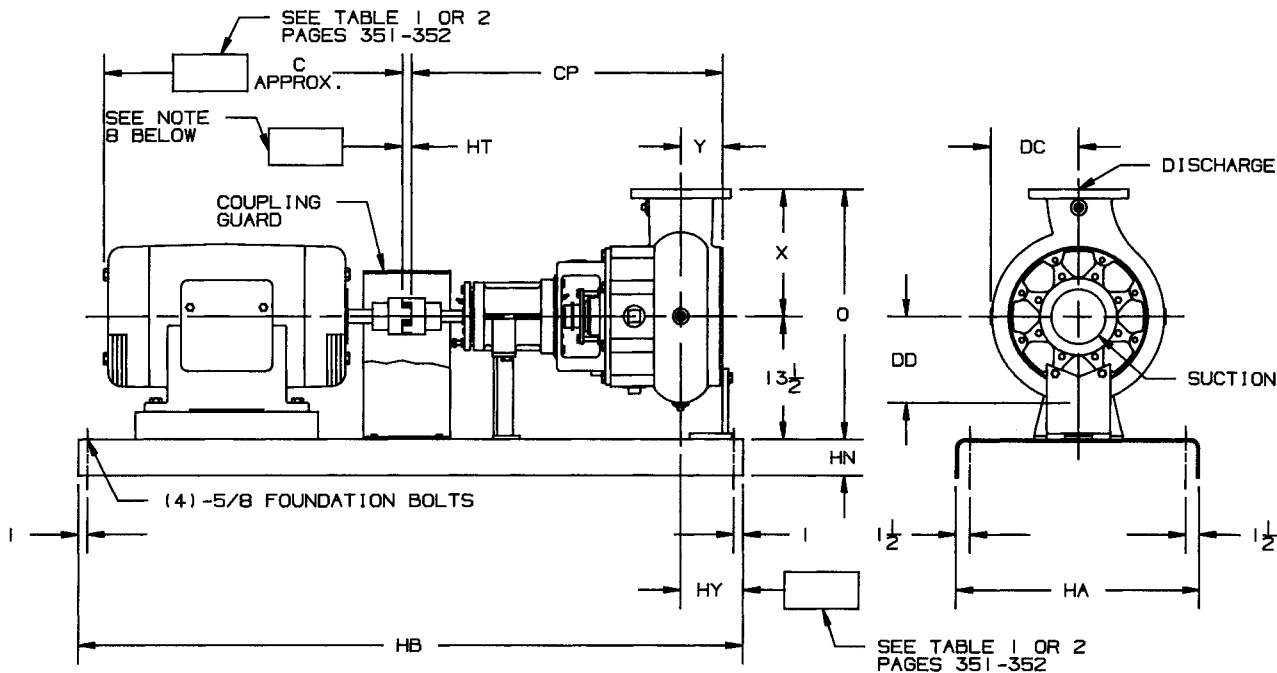
1. ALL DIMENSIONS IN INCHES.
2. DIMENSIONS MAY VARY $\pm 1/4"$.
3. NOT FOR CONSTRUCTION PURPOSES UNLESS CERTIFIED.
4. TWO (2) 1/2" NPT CONNECTIONS 180° APART, ON THE STUFFING BOX FOR LUBRICATION PURPOSES ARE FURNISHED AS STANDARD. ON PACKED PUMPS AN ALEMITE FITTING IS PROVIDED IN ONE TAP AND THE REMAINING TAP IS PLUGGED.
5. DISCHARGE POSITION 1 IS FURNISHED AS STANDARD UNLESS SPECIFIED.
6. SUCTION AND DISCHARGE FLANGES ARE AMERICAN STANDARD 125 LBS.
7. CONDUIT BOX IS SHOWN IS APPROXIMATE LOCATION. DIMENSIONS ARE NOT SPECIFIED AS THEY MAY VARY WITH EACH MOTOR MANUFACTURER.
8. STANDARD COUPLING ILLUSTRATED. "HT" DIMENSION MAY VARY 1/8" TO 1". FOR SPACER COUPLING SIZE AND "HT" DIMENSION REFER TO PAGE 353 (TABLE 3).



DISCHARGE POSITIONS AVAILABLE
(VIEWED FROM SUCTION END)

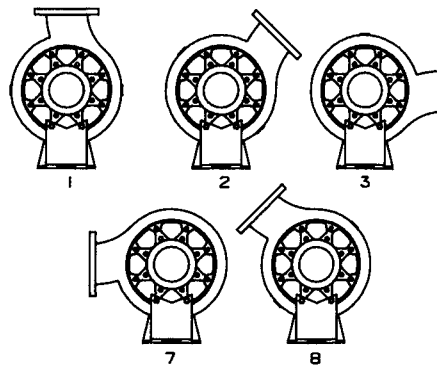
DISCH SUCTION CASE BORE	POWER FRAME	O	X	Y	CP	DC	DD
3x3x9	3C	18	10	3 1/8	28 5/8	6 3/4	6 3/4
3x3x12	3C	21	13	3 1/8	28 3/4	8 3/8	8 3/8
4x4x9	3C	19	11	3 3/8	29 7/8	7 1/4	7 1/4
4x4x12	3C	21	13	3 3/8	30	8 7/8	8 7/8

BASE	HA	HB	HN
1	15	38	3 3/8
2	15	44	3 3/8
3	18	44	4
4	18	48	4
5	18	54	4
6	18	60	4



NOTES:

1. ALL DIMENSIONS IN INCHES.
2. DIMENSIONS MAY VARY ± 1/4".
3. NOT FOR CONSTRUCTION PURPOSES UNLESS CERTIFIED.
4. TWO (2) 1/2" NPT CONNECTIONS 180° APART, ON THE STUFFING BOX FOR LUBRICATION PURPOSES ARE FURNISHED AS STANDARD. ON PACKED PUMPS AN ALEMITE FITTING IS PROVIDED IN ONE TAP AND THE REMAINING TAP IS PLUGGED.
5. DISCHARGE POSITION 1 IS FURNISHED AS STANDARD UNLESS SPECIFIED.
6. SUCTION AND DISCHARGE FLANGES ARE AMERICAN STANDARD 125 LBS.
7. CONDUIT BOX IS SHOWN IS APPROXIMATE LOCATION. DIMENSIONS ARE NOT SPECIFIED AS THEY MAY VARY WITH EACH MOTOR MANUFACTURER.
8. STANDARD COUPLING ILLUSTRATED. "HT" DIMENSION MAY VARY 1/8" TO 1". FOR SPACER COUPLING SIZE AND "HT" DIMENSION REFER TO PAGE 353 (TABLE 3).



DISCHARGE POSITIONS AVAILABLE (VIEWED FROM SUCTION END)

DISCH SUCT CASE BORE	POWER FRAME	O	X	Y	CP	DC	DD
6x6x12	4C	27 1/2	14	4 5/8	31 3/4	9 7/8	9 7/8
6x6x12	5E	27 1/2	14	4 5/8	42 3/4	9 7/8	9 7/8
6x6x15	5E	29 1/2	16	4 5/8	42 3/4	11 1/16	11 1/16

BASE	HA	HB	HN
5	18	54	4
6	18	60	4
7	18	68	4
8	18	72	4
9	18	80	4

AURORA MODEL 661A PUMP

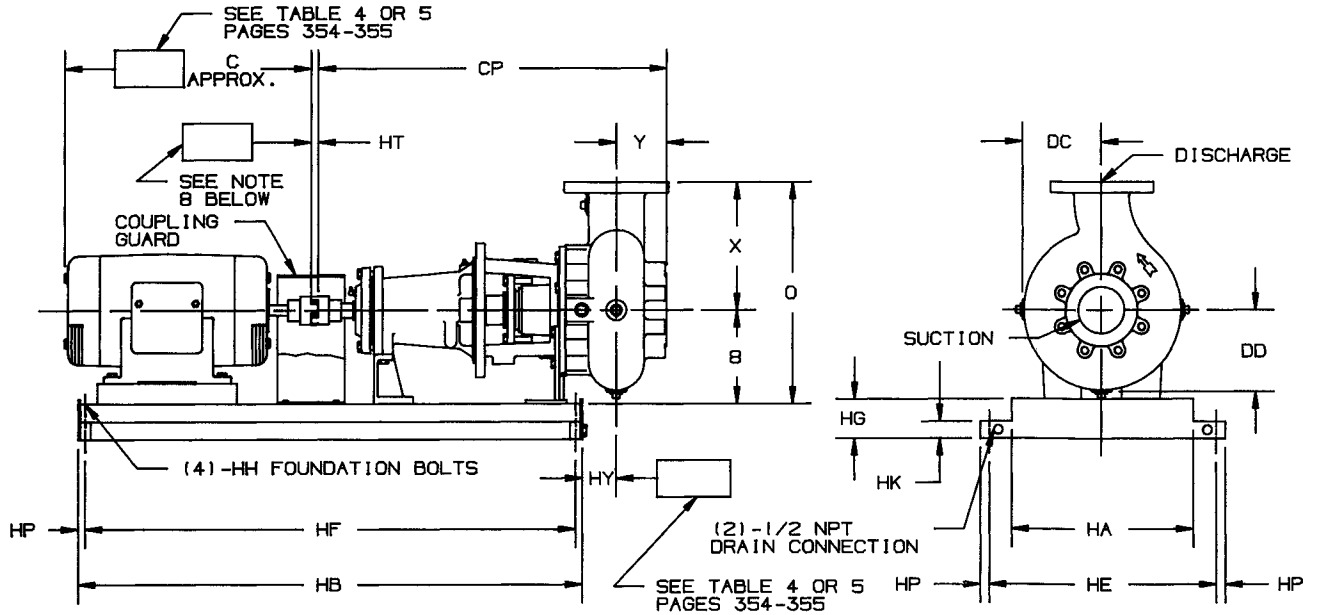
3" & 4" PUMPS DRIP RIM STEEL BASE

SECTION 660 PAGE 253

DATED NOVEMBER 1988

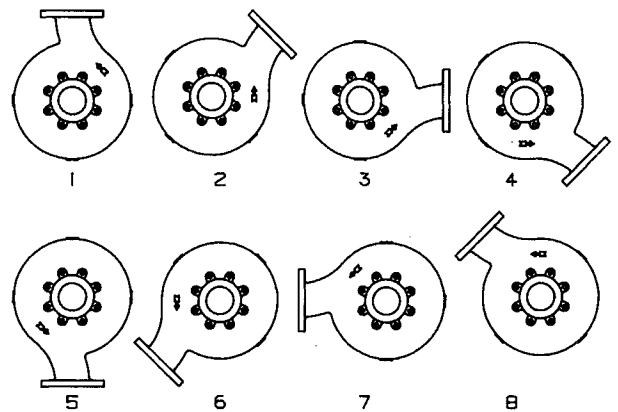
SUPERSEDES PAGE 253

DATED JUNE 1983



NOTES:

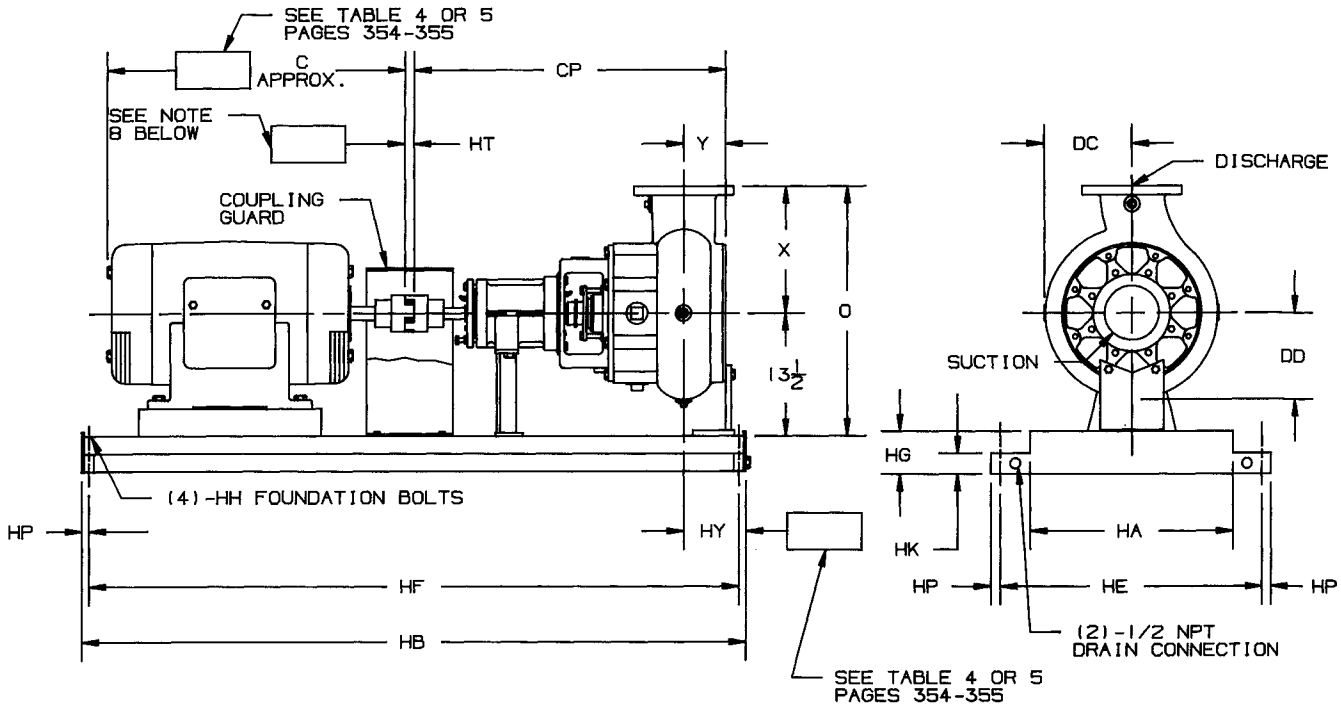
1. ALL DIMENSIONS IN INCHES.
2. DIMENSIONS MAY VARY $\pm 1/4"$.
3. NOT FOR CONSTRUCTION PURPOSES UNLESS CERTIFIED.
4. TWO (2) 1/2" NPT CONNECTIONS 180° APART, ON THE STUFFING BOX FOR LUBRICATION PURPOSES ARE FURNISHED AS STANDARD. ON PACKED PUMPS AN ALEMITE FITTING IS PROVIDED IN ONE TAP AND THE REMAINING TAP IS PLUGGED.
5. DISCHARGE POSITION 1 IS FURNISHED AS STANDARD UNLESS SPECIFIED.
6. SUCTION AND DISCHARGE FLANGES ARE AMERICAN STANDARD 125 LBS.
7. CONDUIT BOX IS SHOWN IS APPROXIMATE LOCATION. DIMENSIONS ARE NOT SPECIFIED AS THEY MAY VARY WITH EACH MOTOR MANUFACTURER.
8. STANDARD COUPLING ILLUSTRATED. "HT" DIMENSION MAY VARY 1/8" TO 1". FOR SPACER COUPLING SIZE AND "HT" DIMENSION REFER TO PAGE 353 (TABLE 3).
9. 3 GROUT HOLES ARE PROVIDED IN TOP OF BASE.



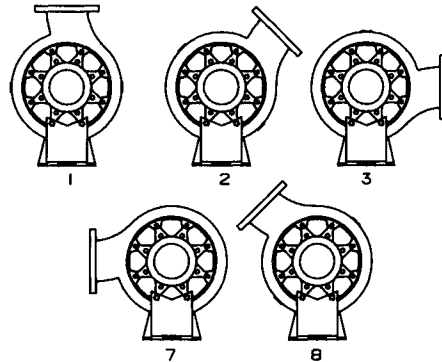
DISCHARGE POSITIONS AVAILABLE
(VIEWED FROM SUCTION END)

DISCHARGE POSITION	BASE SIZE	POWER FRAME	O	X	Y	CP	DC	DD
3x3x9	3C	18	10	3 1/8	28 5/8	6 3/4	6 3/4	
3x3x12	3C	21	13	3 1/8	28 3/4	8 3/8	8 3/8	
4x4x9	3C	19	11	3 3/8	29 7/8	7 1/4	7 1/4	
4x4x12	3C	21	13	3 3/8	30	8 7/8	8 7/8	

BASE	SIZE	HA	HB	HE	HF	HG	HH	HK	HP
5	11x36	11	36 1/2	15 7/8	35 1/8	3	1/2	1 1/2	11/16
6	11x42	11	42 1/2	15 7/8	41 1/8	3	1/2	1 1/2	11/16
8	14x42	14	42 1/2	19	41	3	5/8	1 1/2	3/4
9	14x48	14	48 1/2	19	47	3	5/8	1 1/2	3/4
10	14x56	14	56 1/2	19	55	3	5/8	1 1/2	3/4
11	18x46	18	46 1/2	25 1/8	44 7/8	4	3/4	2	13/16
12	18x54	18	54 1/2	25 1/8	52 7/8	4	3/4	2	13/16
13	18x64	18	64 1/2	25 1/8	62 7/8	4	3/4	2	13/16
14	18x72	18	72 1/2	25 1/8	70 7/8	4	3/4	2	13/16
15	22x54	22	54 1/2	29 1/8	52 7/8	4 1/2	3/4	2	13/16



- NOTES:
1. ALL DIMENSIONS IN INCHES.
 2. DIMENSIONS MAY VARY $\pm 1/4"$.
 3. NOT FOR CONSTRUCTION PURPOSES UNLESS CERTIFIED.
 4. TWO (2) 1/2" NPT CONNECTIONS 180° APART, ON THE STUFFING BOX FOR LUBRICATION PURPOSES ARE FURNISHED AS STANDARD. ON PACKED PUMPS AN ALEMITE FITTING IS PROVIDED IN ONE TAP AND THE REMAINING TAP IS PLUGGED.
 5. DISCHARGE POSITION 1 IS FURNISHED AS STANDARD UNLESS SPECIFIED.
 6. SUCTION AND DISCHARGE FLANGES ARE AMERICAN STANDARD 125 LBS.
 7. CONDUIT BOX IS SHOWN IS APPROXIMATE LOCATION. DIMENSIONS ARE NOT SPECIFIED AS THEY MAY VARY WITH EACH MOTOR MANUFACTURER.
 8. STANDARD COUPLING ILLUSTRATED. "HT" DIMENSION MAY VARY 1/8" TO 1". FOR SPACER COUPLING SIZE AND "HT" DIMENSION REFER TO PAGE 353 (TABLE 3).
 9. 3 GROUT HOLES ARE PROVIDED IN TOP OF BASE.



DISCHARGE POSITIONS AVAILABLE (VIEWED FROM SUCTION END)

DISCH	SUCT	POWER	O	X	Y	CP	DC	DD
6x6x12	4C	27 1/2	14	4 5/8	31 3/4	9 7/8	9 7/8	9 7/8
6x6x12	5E	27 1/2	14	4 5/8	42 3/4	9 7/8	9 7/8	9 7/8
6x6x15	5E	29 1/2	16	4 5/8	42 3/4	11 1/16	11 1/16	11 1/16

BASE	SIZE	HA	HB	HE	HF	HG	HH	HK	HP
10	14x56	14	56 1/2	19	55	3	5/8	1 1/2	3/4
11	18x46	18	46 1/2	25 1/8	44 7/8	4	3/4	2	13/16
12	18x54	18	54 1/2	25 1/8	52 7/8	4	3/4	2	13/16
13	18x64	18	64 1/2	25 1/8	62 7/8	4	3/4	2	13/16
14	18x72	18	72 1/2	25 1/8	70 7/8	4	3/4	2	13/16
15	22x54	22	54 1/2	29 1/8	52 7/8	4 1/2	3/4	2	13/16
18	22x85	22	82 1/2	29 1/8	80 7/8	4 1/2	3/4	2	13/16

FORMED STEEL BASE STANDARD COUPLING

DATED **NOVEMBER 1988**

SUPERSEDES PAGE 351

DATED FEBRUARY 1976

TABLE I

DISCH SUCTION CASE BORE POWER SERIES	MOTOR FRAME	143T	145T	182T	184T	213T	215T	254T	256T	284TS	284T	286TS	286T	324TS	324T
		C	11	12	13	14	16	18	21	23	22	24	24	25	25
3x3x9	3	BASE	1	1	1	1	1	3	3	4	4				
		HY	4 7/8	4 7/8	4 7/8	4 7/8	4 7/8	4 7/8	4 7/8	4 7/8	4 7/8	4 7/8			
4x4x9	3	BASE			1	1	1	3	3	4	4	4	4	4	4
		HY			5 7/8	5 7/8	5 7/8	5 7/8	5 7/8	5 7/8	5 7/8	5 7/8	5 7/8	5 7/8	5 7/8
3x3x12	3	BASE				1	1	3	3	4	4	4	4	4	4
		HY				5	5	5	5	5	5	5	5	5	5
4x4x12	3	BASE					1	3	3	4	4	4	4	4	4
		HY					6	6	6	6	6	6	6	6	6
6x6x12	4	BASE						5	5	5	5	6	6	6	6
		HY						5 1/4	5 1/4	5 1/4	5 1/4	5 1/4	5 1/4	5 1/4	5 1/4
6x6x12	5	BASE						7	7	7	7	7	7	8	8
		HY						5 1/4	5 1/4	5 1/4	5 1/4	5 1/4	5 1/4	5 1/4	5 1/4
6x6x15	5	BASE						7	7	7	7	7	7	8	8
		HY						5 1/4	5 1/4	5 1/4	5 1/4	5 1/4	5 1/4	5 1/4	5 1/4

TABLE I (CONTINUED)

DISCH SUCTION CASE BORE POWER SERIES	MOTOR FRAME	326TS	326T	364TS	364T	365TS	365T	404TS	404T	405TS	405T	444TS	444T	445TS	445T
		C	26	28	27	29	28	30	30	33	32	35	34	38	36
3x3x12	3	BASE	5	5	4	5	4	5							
		HY	5	5	5	5	5	5							
4x4x12	3	BASE	5	5	4	5	4	5							
		HY	6	6	6	6	6	6							
6x6x12	4	BASE	6	6	6	6	6	7							
		HY	5 1/4	5 1/4	5 1/4	5 1/4	5 1/4	5 1/4							
6x6x12	5	BASE	8	8	8	8	8	8							
		HY	5 1/4	5 1/4	5 1/4	5 1/4	5 1/4	5 1/4							
6x6x15	5	BASE	8	8	8	8	8	8							
		HY	5 1/4	5 1/4	5 1/4	5 1/4	5 1/4	5 1/4							

NOTES:
 1. ALL DIMENSIONS IN INCHES.
 2. NOT FOR CONSTRUCTION PURPOSES UNLESS CERTIFIED.

TABLE 2

DISCH SUCTION CASE BORE	POWER SERIES	MOTOR FRAME	143T	145T	182T	184T	213T	215T	254T	256T	284TS	284T	286TS	286T	324TS	324T	
			C	11	12	13	14	16	18	21	23	22	24	24	25	25	26
3x3x9	3	BASE	2	2	2	2	2	2	4	4	5	5					
		HY	4 7/8	4 7/8	4 7/8	4 7/8	4 7/8	4 7/8	4 7/8	4 7/8	4 7/8	4 7/8	4 7/8				
4x4x9	3	BASE			2	2	2	2	4	4	5	5	5	5	5	5	5
		HY			5 7/8	5 7/8	5 7/8	5 7/8	5 7/8	5 7/8	5 7/8	5 7/8	5 7/8	5 7/8	5 7/8	5 7/8	5 7/8
3x3x12	3	BASE					2	2	4	4	5	5	5	5	5	5	5
		HY					5	5	5	5	5	5	5	5	5	5	5
4x4x12	3	BASE						2	4	4	5	5	5	5	5	5	5
		HY						6	6	6	6	6	6	6	6	6	6
6x6x12	4	BASE							6	6	6	6	7	7	7	7	7
		HY							5 1/4	5 1/4	5 1/4	5 1/4	5 1/4	5 1/4	5 1/4	5 1/4	5 1/4
6x6x12	5	BASE							8	8	9	9	9	9	9	9	9
		HY							5 1/4	5 1/4	5 1/4	5 1/4	5 1/4	5 1/4	5 1/4	5 1/4	5 1/4
6x6x15	5	BASE							8	8	9	9	9	9	9	9	9
		HY							5 1/4	5 1/4	5 1/4	5 1/4	5 1/4	5 1/4	5 1/4	5 1/4	5 1/4

TABLE 2 (CONTINUED)

DISCH SUCTION CASE BORE	POWER SERIES	MOTOR FRAME	326TS	326T	364TS	364T	365TS	365T	404TS	404T	405TS	405T	444TS	444T	445TS	445T
			C	26	28	27	29	28	30	30	33	32	35	34	38	36
3x3x12	3	BASE	6	6	5	6	5	6								
		HY	5	5	5	5	5	5								
4x4x12	3	BASE	6	6	5	6	5	6								
		HY	6	6	6	6	6	6								
6x6x12	4	BASE	7	7	7	7	7	7								
		HY	5 1/4	5 1/4	5 1/4	5 1/4	5 1/4	5 1/4								
6x6x12	5	BASE	9	9	9	9	9	9								
		HY	5 1/4	5 1/4	5 1/4	5 1/4	5 1/4	5 1/4								
6x6x15	5	BASE	9	9	9	9	9	9								
		HY	5 1/4	5 1/4	5 1/4	5 1/4	5 1/4	5 1/4								

NOTES:
 1. ALL DIMENSIONS IN INCHES.
 2. NOT FOR CONSTRUCTION PURPOSES UNLESS CERTIFIED.

AURORA MODEL 661A PUMP SPACER COUPLINGS

SECTION **660** PAGE **353**
DATED **NOVEMBER 1988**
SUPERSEDES PAGE 353
DATED JUNE 1983

TABLE 3

DISCH SUCTION CASE BORE	POWER SERIES	MOTOR FRAME	143T	145T	182T	184T	213T	215T	254T	256T	284TS	284T	286TS	286T	324TS	324T
			SIZE	SIZE	SIZE	SIZE	SIZE	SIZE	SIZE	SIZE	SIZE	SIZE	SIZE	SIZE	SIZE	SIZE
3x3x9	3	SIZE	6	6	6	6	6	6	7	8	8	8				
		HT	5	5	5	5	5	5	5	5	5	5				
4x4x9	3	SIZE			6	6	6	6	7	8	8	8	9	9	9	9
		HT			5	5	5	5	5	5	5	5	5	5	5	5
3x3x12	3	SIZE					6	6	7	8	8	8	9	9	9	9
		HT					5	5	5	5	5	5	5	5	5	5
4x4x12	3	SIZE						6	7	8	8	8	9	9	9	9
		HT						5	5	5	5	5	5	5	5	5
6x6x12	4	SIZE							7	8	8	8	9	9	9	9
		HT							5	5	5	5	5	5	5	5
6x6x12	5	SIZE							8	8	9	9	9	9	9	9
		HT							7 3/4	7 3/4	7 3/4	7 3/4	7 3/4	7 3/4	7 3/4	7 3/4
6x6x15	5	SIZE							8	8	9	9	9	9	9	9
		HT							7 3/4	7 3/4	7 3/4	7 3/4	7 3/4	7 3/4	7 3/4	7 3/4

TABLE 3 (CONTINUED)

DISCH SUCTION CASE BORE	POWER SERIES	MOTOR FRAME	326TS	326T	364TS	364T	365TS	365T	404TS	404T	405TS	405T	444TS	444T	445TS	445T
			SIZE	SIZE	SIZE	SIZE	SIZE	SIZE	SIZE	SIZE	SIZE	SIZE	SIZE	SIZE	SIZE	SIZE
3x3x12	3	SIZE	10	10	11	10	11	11								
		HT	5	5	5	5	5	5								
4x4x12	3	SIZE	10	10	11	10	11	11								
		HT	5	5	5	5	5	5								
6x6x12	4	SIZE	10	10	11	10	11	11								
		HT	5	5	5	5	5	5								
6x6x12	5	SIZE	10	10	12	10	12	12								
		HT	7 3/4	7 3/4	7 3/4	7 3/4	7 3/4	7 3/4								
6x6x15	5	SIZE	10	10	12	10	12	12								
		HT	7 3/4	7 3/4	7 3/4	7 3/4	7 3/4	7 3/4								

- NOTES:
 1. ALL DIMENSIONS IN INCHES.
 2. NOT FOR CONSTRUCTION PURPOSES UNLESS CERTIFIED.
 3. SIZE: COUPLING SIZE FOR TYPE SC WOODS SURE-FLEX SPACER COUPLINGS.
 4. HT: COUPLING GAP (DISTANCE BETWEEN SHAFTS)

AURORA MODEL 661A PUMP

DRIP RIM STEEL BASE

STANDARD COUPLING

TABLE 4

DISCH SUCTION CASE BORE	POWER SERIES	MOTOR FRAME	143T	145T	182T	184T	213T	215T	254T	256T	284TS	284T	286TS	286T	324TS	324T	
			C	11	12	13	14	16	18	21	23	22	24	24	25	25	26
3x3x9	3	BASE	5	5	5	5	6	6	8	9	9	9					
		HY	4 3/8	4 3/8	4 3/8	4 3/8	4 3/8	4 3/8	4 3/8	4 3/8	4 3/8	4 3/8					
4x4x9	3	BASE			5	5	6	6	8	9	9	9	9	9	11	11	
		HY			5 3/8	5 3/8	5 3/8	5 3/8	5 3/8	5 3/8	5 3/8	5 3/8	5 3/8	5 3/8	5 3/8	5 3/8	5 3/8
3x3x12	3	BASE					6	6	8	9	9	9	9	9	11	11	
		HY					4 1/2	4 1/2	4 1/2	4 1/2	4 1/2	4 1/2	4 1/2	4 1/2	4 1/2	4 1/2	4 1/2
4x4x12	3	BASE					6	8	9	9	9	9	9	9	11	11	
		HY					5 1/2	5 1/2	5 1/2	5 1/2	5 1/2	5 1/2	5 1/2	5 1/2	5 1/2	5 1/2	5 1/2
6x6x12	4	BASE						10	10	10	10	10	13	13	13	13	
		HY						5 1/4	5 1/4	5 1/4	5 1/4	5 1/4	5 1/4	5 1/4	5 1/4	5 1/4	5 1/4
6x6x12	5	BASE						14	14	14	14	14	14	14	14	14	
		HY						5 1/4	5 1/4	5 1/4	5 1/4	5 1/4	5 1/4	5 1/4	5 1/4	5 1/4	5 1/4
6x6x15	5	BASE						14	14	14	14	14	14	14	14	14	
		HY						5 1/4	5 1/4	5 1/4	5 1/4	5 1/4	5 1/4	5 1/4	5 1/4	5 1/4	5 1/4

TABLE 4 (CONTINUED)

DISCH SUCTION CASE BORE	POWER SERIES	MOTOR FRAME	326TS	326T	364TS	364T	365TS	365T	404TS	404T	405TS	405T	444TS	444T	445TS	445T
			C	26	28	27	29	28	30	30	33	32	35	34	38	36
3x3x12	3	BASE	12	12	12	12	12	12								
		HY	4 1/2	4 1/2	4 1/2	4 1/2	4 1/2	4 1/2								
4x4x12	3	BASE	12	12	12	12	12	15	15							
		HY	5 1/2	5 1/2	5 1/2	5 1/2	5 1/2	5 1/2	5 1/2	5 1/2						
6x6x12	4	BASE	13	13	13	13	13	13								
		HY	5 1/4	5 1/4	5 1/4	5 1/4	5 1/4	5 1/4								
6x6x12	5	BASE	18	18	18	18	18	18	18	18	18	18	18	18	18	18
		HY	5 1/4	5 1/4	5 1/4	5 1/4	5 1/4	5 1/4	5 1/4	5 1/4	5 1/4	5 1/4	5 1/4	5 1/4	5 1/4	5 1/4
6x6x15	5	BASE	18	18	18	18	18	18	18	18	18	18	18	18	18	18
		HY	5 1/4	5 1/4	5 1/4	5 1/4	5 1/4	5 1/4	5 1/4	5 1/4	5 1/4	5 1/4	5 1/4	5 1/4	5 1/4	5 1/4

NOTES:
 1. ALL DIMENSIONS IN INCHES.
 2. NOT FOR CONSTRUCTION PURPOSES UNLESS CERTIFIED.

AURORA MODEL 661A PUMP

SECTION 660 PAGE 355

DRIP RIM STEEL BASE

DATED NOVEMBER 1988

SPACER COUPLING

SUPERSEDES PAGE 355

DATED JUNE 1983

TABLE 5

DISCH SUCTION CASE BORE	POWER SERIES	MOTOR FRAME	143T	145T	182T	184T	213T	215T	254T	256T	284TS	284T	286TS	286T	324TS	324T	
			C	11	12	13	14	16	18	21	23	22	24	24	25	25	26
3x3x9	3	BASE	6	6	6	6	6	6	9	9	9	9					
		HY	4 3/8	4 3/8	4 3/8	4 3/8	4 3/8	4 3/8	4 3/8	4 3/8	4 3/8	4 3/8	4 3/8				
4x4x9	3	BASE			6	6	6	6	9	9	9	9	12	12	12	12	12
		HY			5 3/8	5 3/8	5 3/8	5 3/8	5 3/8	5 3/8	5 3/8	5 3/8	5 3/8	5 3/8	5 3/8	5 3/8	5 3/8
3x3x12	3	BASE					6	6	9	9	9	9	12	12	12	12	12
		HY					4 1/2	4 1/2	4 1/2	4 1/2	4 1/2	4 1/2	4 1/2	4 1/2	4 1/2	4 1/2	4 1/2
4x4x12	3	BASE					6	6	9	9	9	9	12	12	12	12	12
		HY					5 1/2	5 1/2	5 1/2	5 1/2	5 1/2	5 1/2	5 1/2	5 1/2	5 1/2	5 1/2	5 1/2
6x6x12	4	BASE							13	13	13	13	13	13	13	13	13
		HY							5 1/4	5 1/4	5 1/4	5 1/4	5 1/4	5 1/4	5 1/4	5 1/4	5 1/4
6x6x12	5	BASE							14	14	18	18	18	18	18	18	18
		HY							5 1/4	5 1/4	5 1/4	5 1/4	5 1/4	5 1/4	5 1/4	5 1/4	5 1/4
6x6x15	5	BASE							14	14	18	18	18	18	18	18	18
		HY							5 1/4	5 1/4	5 1/4	5 1/4	5 1/4	5 1/4	5 1/4	5 1/4	5 1/4

TABLE 5 (CONTINUED)

DISCH SUCTION CASE BORE	POWER SERIES	MOTOR FRAME	326TS	326T	364TS	364T	365TS	365T	404TS	404T	405TS	405T	444TS	444T	445TS	445T
			C	26	28	27	29	28	30	30	33	32	35	34	38	36
3x3x12	3	BASE	12	12	12	12	12	12								
		HY	4 1/2	4 1/2	4 1/2	4 1/2	4 1/2	4 1/2								
4x4x12	3	BASE	12	12	12	12	12	12	15	15						
		HY	5 1/2	5 1/2	5 1/2	5 1/2	5 1/2	5 1/2	5 1/2	5 1/2						
6x6x12	4	BASE	13	13	13	13	13	13								
		HY	5 1/4	5 1/4	5 1/4	5 1/4	5 1/4	5 1/4								
6x6x12	5	BASE	18	18	18	18	18	18								
		HY	5 1/4	5 1/4	5 1/4	5 1/4	5 1/4	5 1/4								
6x6x15	5	BASE	18	18	18	18	18	18								
		HY	5 1/4	5 1/4	5 1/4	5 1/4	5 1/4	5 1/4								

NOTES:
 1. ALL DIMENSIONS IN INCHES.
 2. NOT FOR CONSTRUCTION PURPOSES UNLESS CERTIFIED.

AURORA SERIES 660 SELECTION CHART 885 R.P.M. VORTEX IMPELLER

