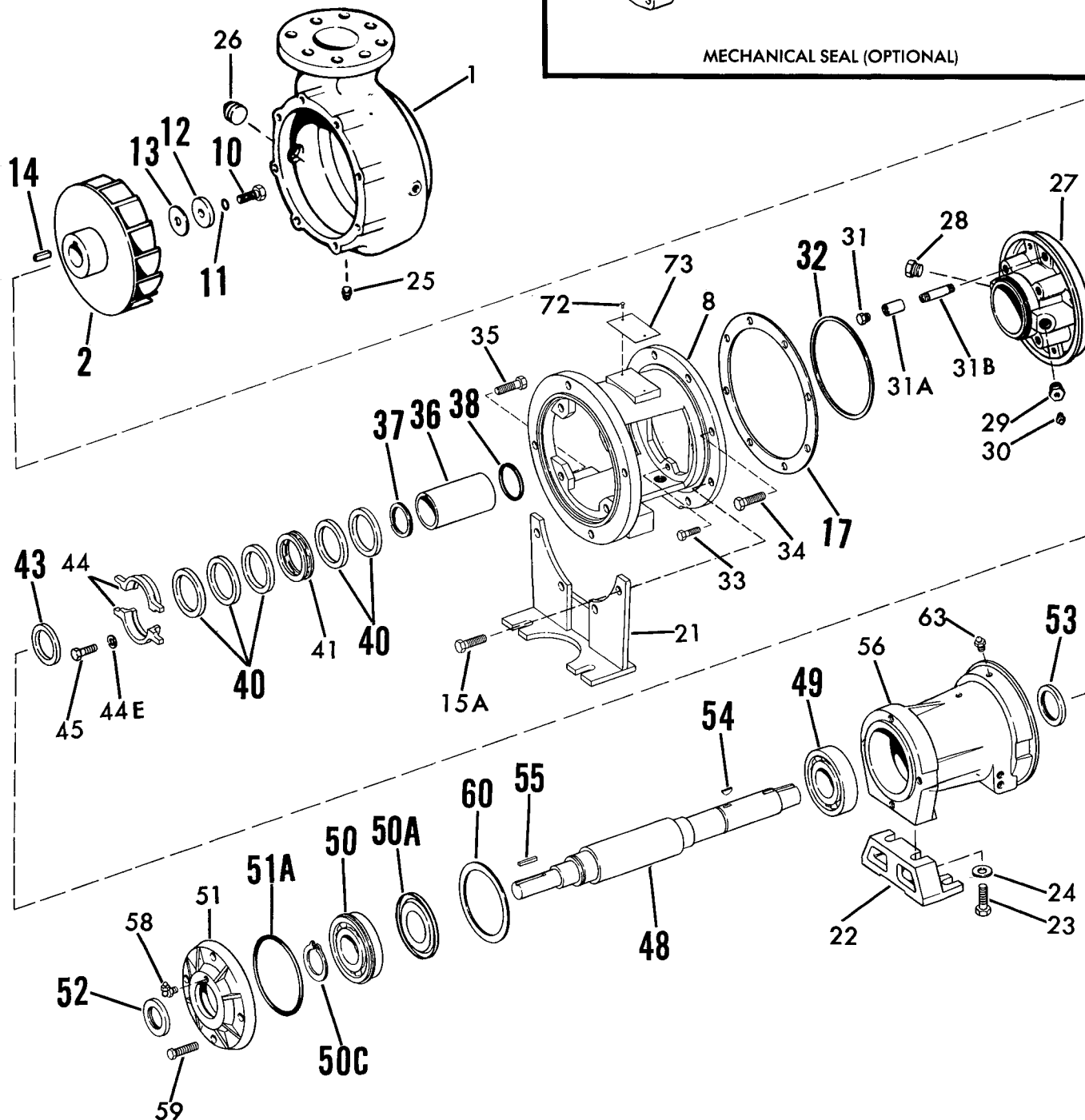
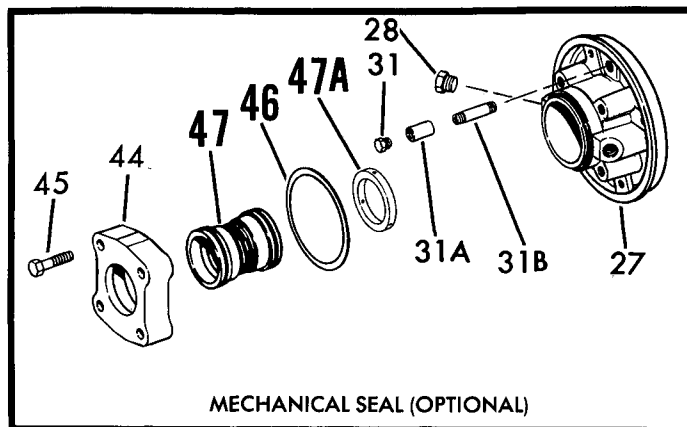


660 SERIES REPAIR PARTS INDEX

SECTION **660A** PAGE 1
DATED DECEMBER 1991
SUPERSEDES PAGE 1
DATED NOVEMBER 1988

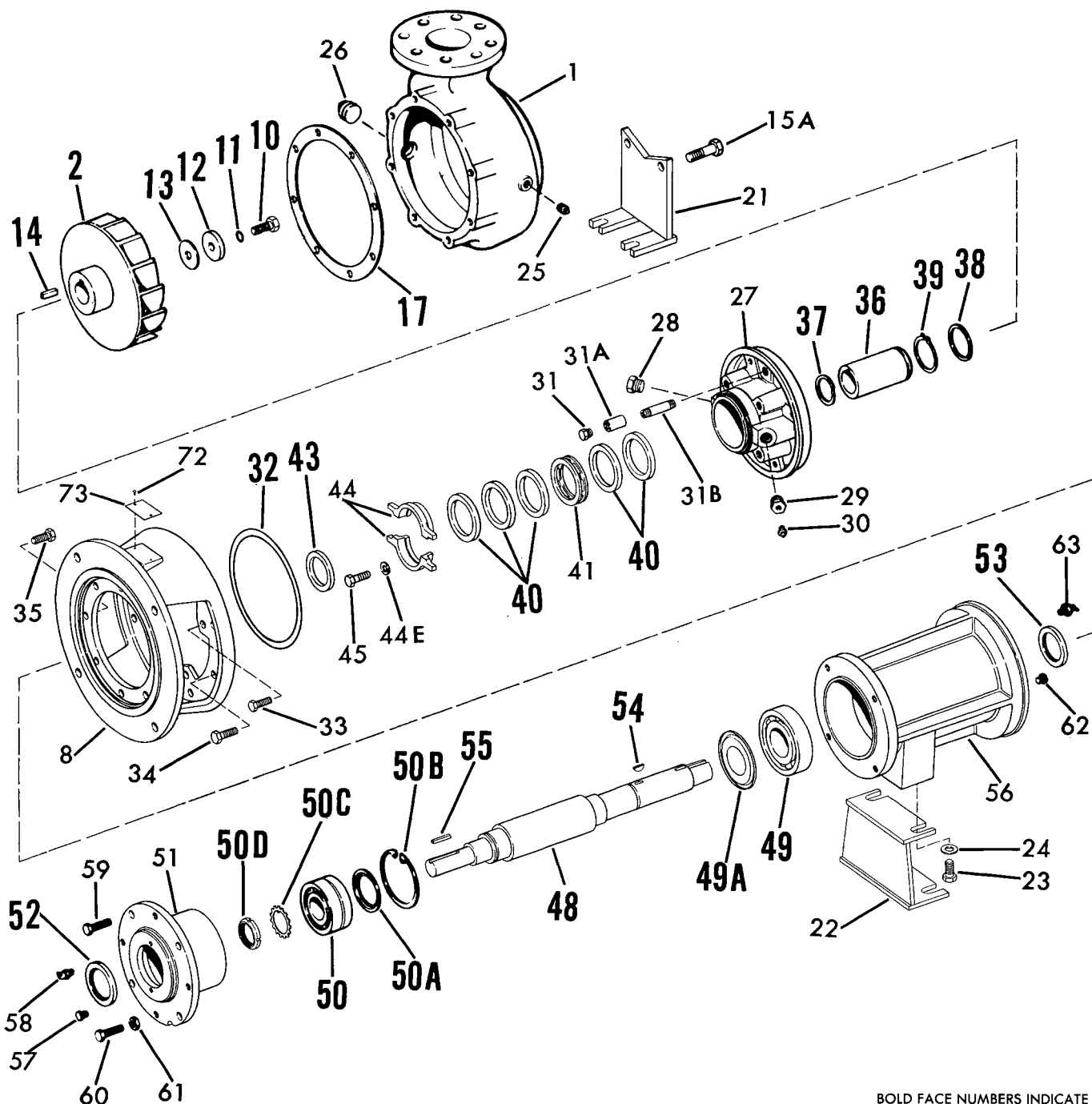
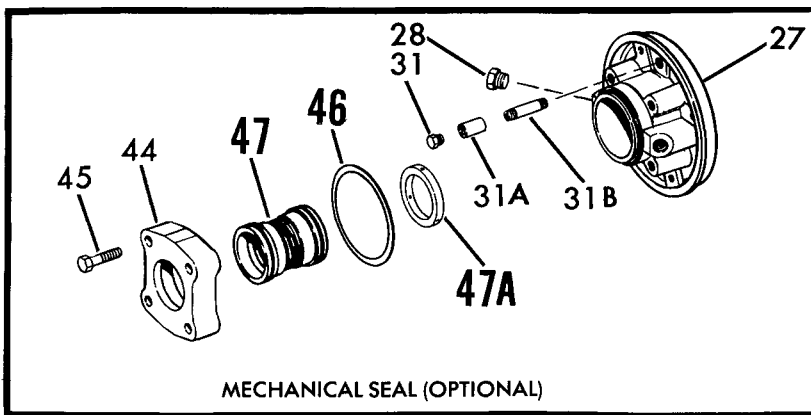
PARTS ARE LISTED BY POWER FRAME AND LIQUID ENDS. SELECT POWER FRAME BY PUMP SIZE AND SPEED FROM CHART BELOW.

PUMP SIZE	RPM			
	1775	1175	885	710
3x3x9	3C	3C	3C	
4x4x9	3C	3C	3C	
3x3x12	3C	3C	3C	
4x4x12	3C	3C	3C	
6x6x12	5E	4C	4C	
6x6x15		5E	5E	5E



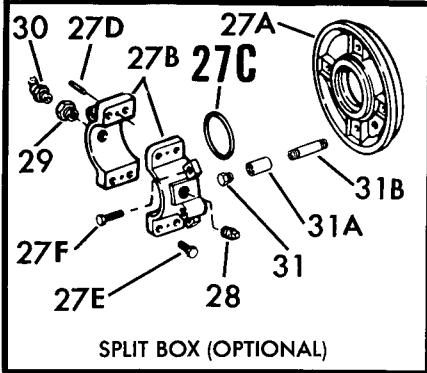
**BOLD FACE NUMBERS INDICATE
RECOMMENDED SPARE PARTS.**

SECTION 660A PAGE 3
DATED DECEMBER 1991
SUPERSEDES PAGE 3
DATED NOVEMBER 1988

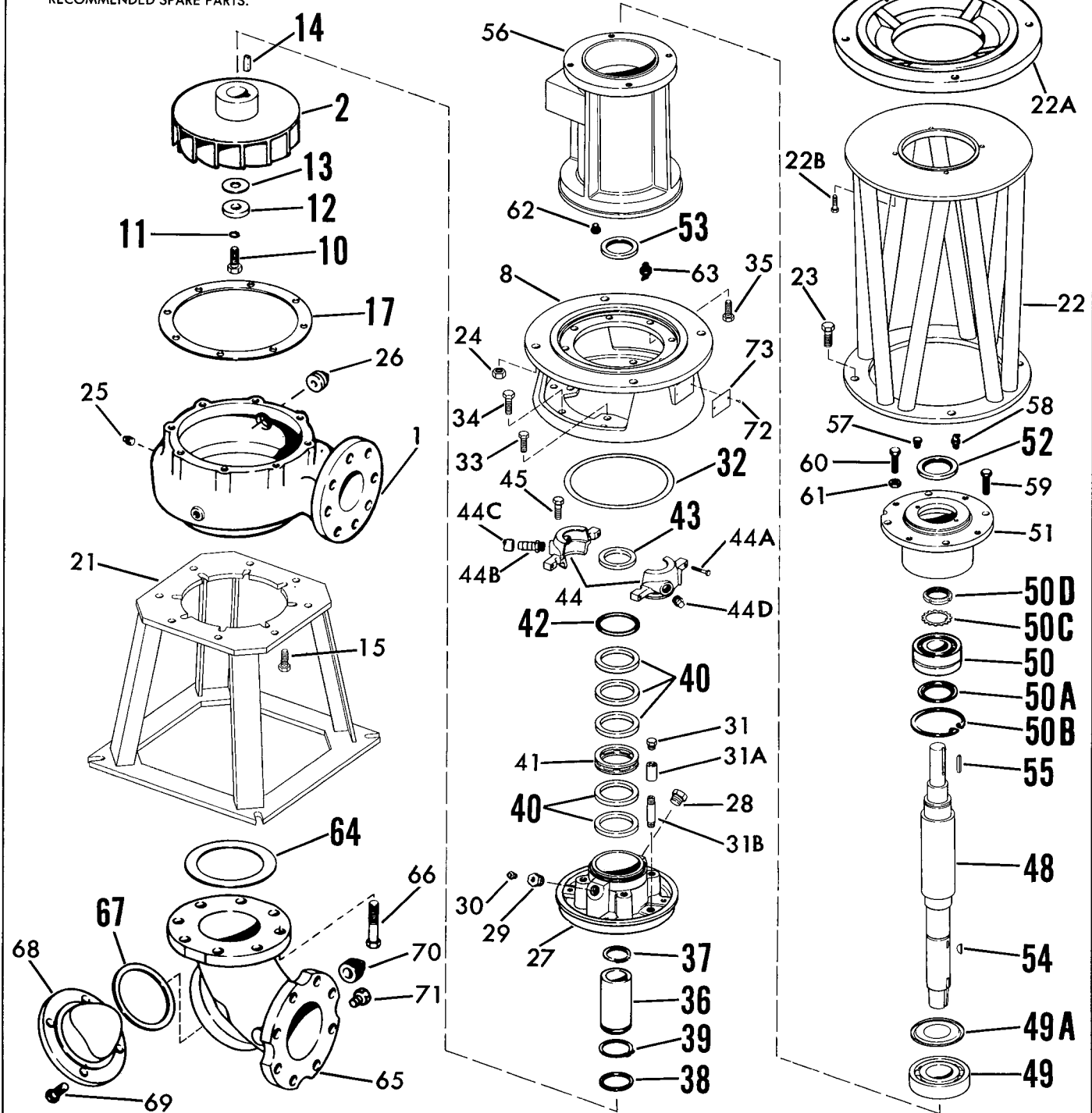
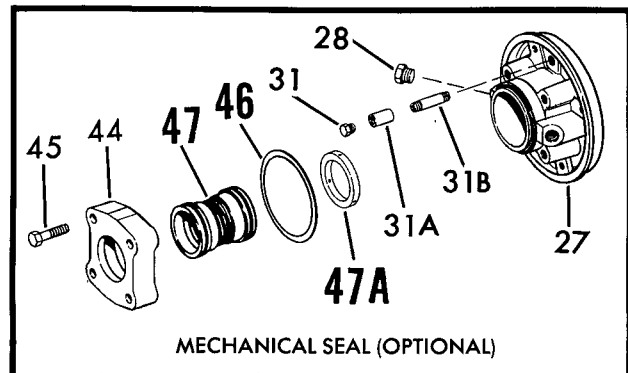


BOLD FACE NUMBERS INDICATE
RECOMMENDED SPARE PARTS.

660A SERIES
MODEL 662A-663A PF 4 & 5
PIECE NUMBERS

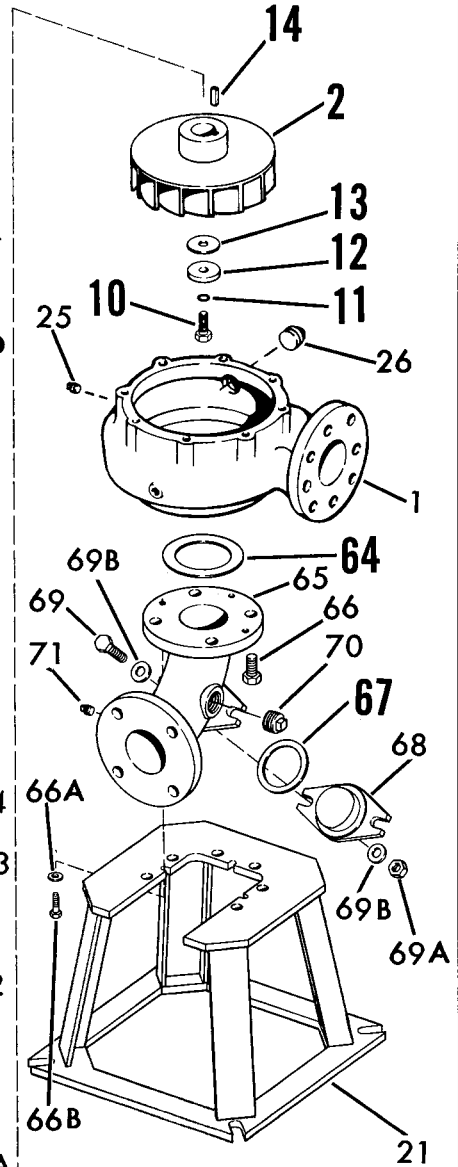
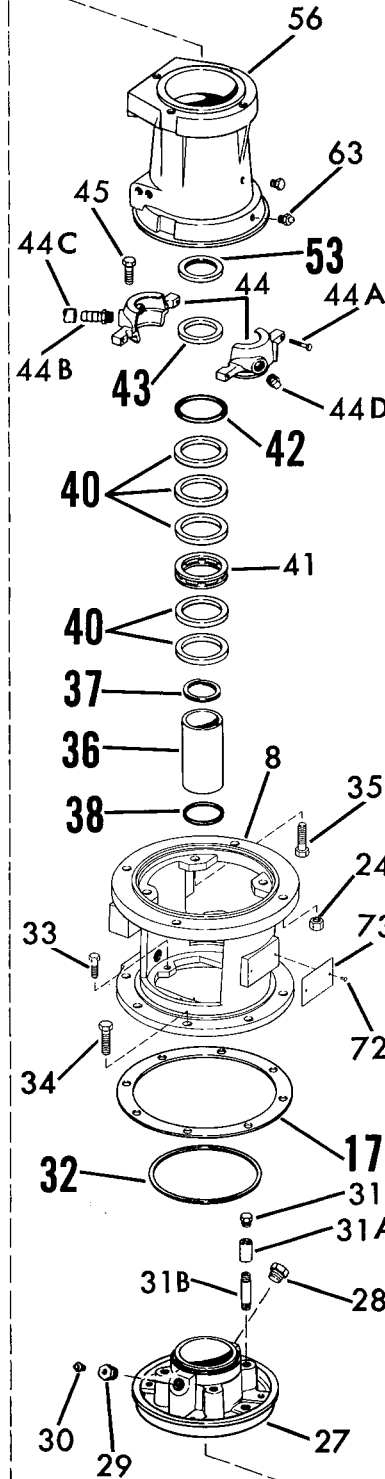
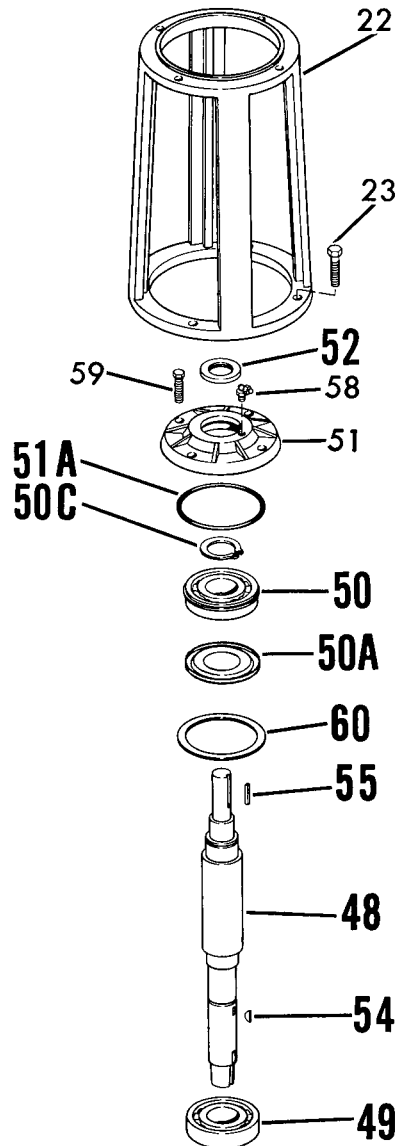
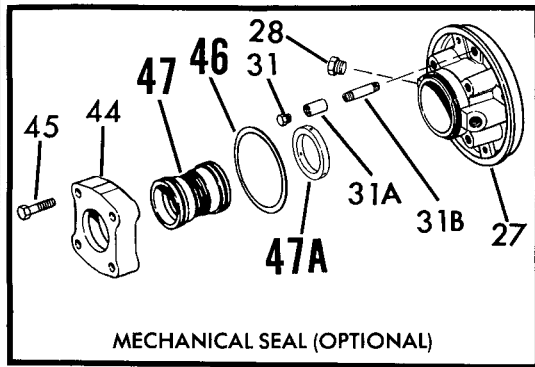


BOLD FACE NUMBERS INDICATE
 RECOMMENDED SPARE PARTS.



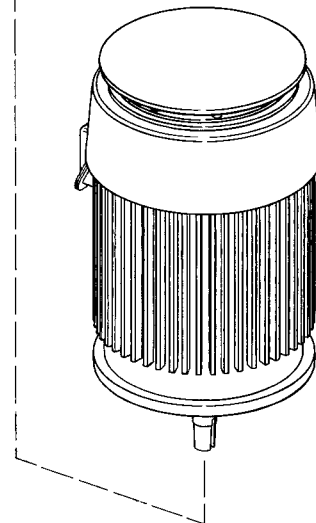
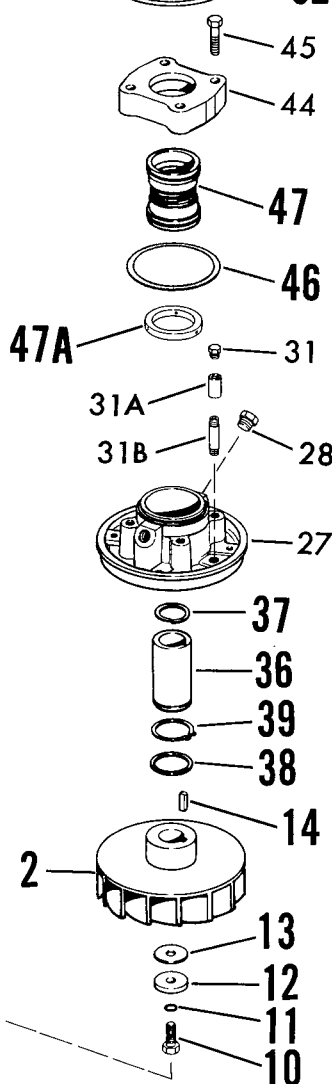
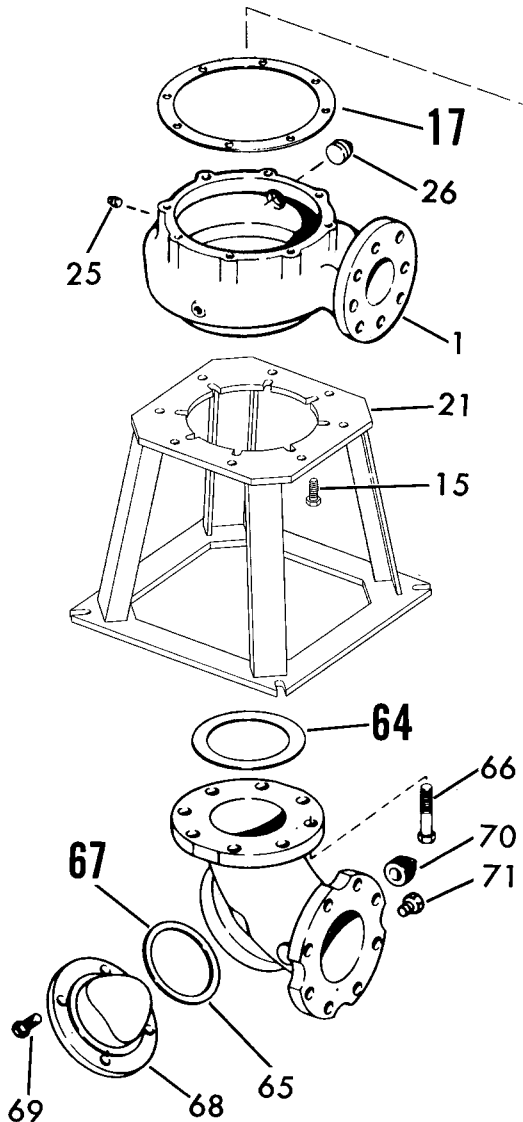
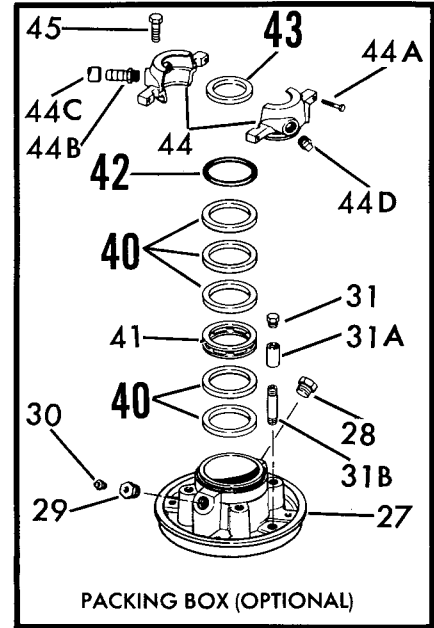
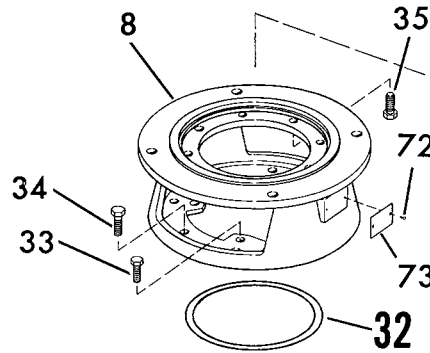
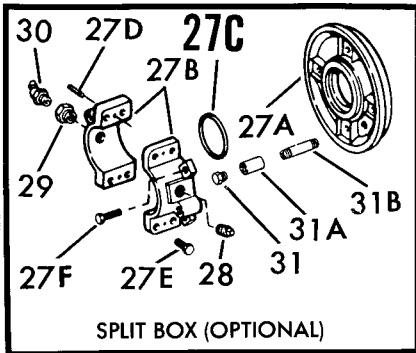
660A SERIES
MODEL 662A-663A PF 3C
PIECE NUMBERS

SECTION 660A PAGE 5
DATED DECEMBER 1991
SUPERSEDES PAGE 5
DATED NOVEMBER 1988



**BOLD FACE NUMBERS INDICATE
 RECOMMENDED SPARE PARTS.**

660A SERIES
MODEL 664A
PIECE NUMBERS



BOLD FACE NUMBERS INDICATE
 RECOMMENDED SPARE PARTS.

660A SERIES

SECTION 660A PAGE 7
DATED DECEMBER 1991
SUPERSEDES PAGE 7
DATED NOVEMBER 1988

PARTS LIST

PC. NO.	DESCRIPTION	QTY	PART NO.	MATERIAL			
				S.F.	—	—	—
1	CASING						
	3x3x9	1	180-0655	010			
	4x4x9	1	180-0656	010			
	3x3x12	1	180-0657	010			
	4x4x12	1	180-0658	010			
	6x6x12	1	180-0659	010			
	6x6x15	1	180-0660	010			
2	IMPELLER						
	3x3x9	1	443-2518	010			
	4x4x9	1	443-2519	010			
	3x3x12	1	443-2520	010			
	4x4x12	1	443-2521	010			
	6x6x12 PF 4C (661A, 662A, 663A)	1	443-2522	010			
	6x6x12 PF 5E (661A, 662A, 663A)	1	443-2523	010			
	6x6x12 (614A) 885 RPM & 9" DIAMETER & LESS	1	443-2647	010			
	6x6x15	1	443-2524	010			
8	BRACKET						
	3x3x9, 4x4x9	1	116-0487	010			
	3x3x12, 4x4x12	1	116-0488	010			
	6x6x12, PF 4C	1	116-0490	010			
	6x6x12, PF 5E	1	116-0491	010			
10	IMPELLER SCREW						
	PF 3C & 4C	1	168-1008	082			
	PF 5E	1	168-1009	082			
11	IMP. SCREW SEAL						
	PF 3C & 4C	1	908-1283	999			
	PF 5E	1	908-1284	999			
12	IMPELLER WASHER						
	PF 3C	1	908-0605	087			
	PF 4C	1	908-0457	062			
	PF 5E	1	908-0458	062			
13	IMPELLER WASHER GASKET						
	PF 3C	1	364-2038	803			
	PF 4C	1	364-2025	803			
	PF 5E	1	364-2029	803			
14	IMPELLER KEY						
	PF 3C	1	472-0250	087			
	PF 4C	1	472-0250	087			
	PF 5E	1	472-0391	087			

PC. NO.	DESCRIPTION	QTY	PART NO.	MATERIAL			
				S.F.	—	*	—
15	CAPSCREW 662A, 663A & 664A						
	6x6x12	8	168-0566	082			
	6x6x15	8	168-0566	082			
15A	CAPSCREW 661A						
	3x3x9	4	168-0492	082			
	4x4x9	4	168-0492	082			
	3x3x12	4	168-0564	082			
	4x4x12	4	168-0564	082			
	6x6x12	2	168-0560	082			
	6x6x15	2	168-0560	082			
17	GASKET *						
	9" CASE BORE	1	364-1015	603			
	12" CASE BORE	1	364-1326	803			
	15" CASE BORE	1	364-1327	803			
21	PUMP SUPPORT FRONT FOOT 661A						
	3x3x9, 4x4x9	1	820-1622	087			
	3x3x12, 4x4x12	1	820-1623	087			
	6x6x12	1	820-0507	087			
	6x6x15	1	820-0507	087			
	PUMP BASE 662A, 663A, 664A						
	3x3x9, 4x4x9	1	820-1387	087			
	3x3x12, 4x4x12	1	820-1387	087			
	6x6x12	1	820-1388	087			
	6x6x15	1	820-1388	087			
22	PUMP SUPPORT REAR FOOT 661A						
	3x3x9, 4x4x9	1	820-0033	010			
	3x3x12, 4x4x12	1	820-0033	010			
	6x6x12, PF 4C	1	820-1628	087			
	6x6x12 PF 5E	1	820-1629	087			
	6x6x15	1	820-1629	087			
	MOTOR SUPPORT 663A						
	PF 3 & 4	1	820-1397	010			
	< 284 HPH PF 5	1	820-1617	087			
	≤ 284 HPH PF 5	1	820-1620	087			
22A	ADAPTOR 663A 284 HPH PF 3 & 4	1	008-0340	010			
22B	CAPSCREW 663A 284 HPH PF 3 & 4	1	168-0562	082			

*FOR MODEL 664A REFER TO FACTORY FOR SHIM GASKETS.

< LESS THAN ≥ GREATER THAN OR EQUAL TO

660A SERIES

PARTS LIST

PC. NO.	DESCRIPTION	QTY	PART NO.	MATERIAL			
				S.F.	—	—	—
23	CAPSCREW						
	REAR FOOT 661A						
	PF 3C	2	168-0490	082			
	PF 4C	2	168-0560	082			
	PF 5E	2	168-0668	082			
	CAPSCREW 663A						
	PF 3C & 4C	4	168-0494	082			
	PF 5E	4	168-0640	082			
24	WASHER						
	REAR FOOT 661A						
	PF 3C	2	908-0114	080			
	PF 4C	2	908-0116	080			
	PF 5E	2	908-0118	080			
	NUT 663A						
	PF 3C & 4C	4	544-0113	080			
	PF 5E	4	544-0117	080			
25	PIPE PLUG	4	600-0005	028			
26	PIPE PLUG						
	3x3x9	1	600-0006	028			
	4x4x9	1	600-0006	028			
	3x3x12	1	600-0006	028			
	4x4x12	1	600-0006	028			
	6x6x12	1	600-0009	028			
	6x6x15	1	600-0009	028			
27	STUFFING BOX						
	STANDARD PF 3C	1	812-1083	010			
	STANDARD PF 4C	1	812-1084	010			
	STANDARD PF 5E	1	812-1085	010			
27A	STUFFING BOX						
	ADAPTOR						
	OPTIONAL PF 4C	1	008-0564	010			
	OPTIONAL PF 5E	1	008-0565	010			
27B	SPLIT STUFFING BOX						
	OPTIONAL PF 4C	1	812-0305	010			
	OPTIONAL PF 5E	1	812-0309	010			
27C	GASKET OPT PF 4	1	364-2006	803			
	OPTIONAL PF 5	1	364-2027	803			
27D	PIN OPT. PF 4	2	592-0836	104			
	OPTIONAL PF 5	2	592-0361	107			
27E	CAPSCRW OPT PF 4	4	168-0382	082			
	OPTIONAL PF 5	4	168-0382	082			
27F	CAPSCRW OPT PF 4	4	168-0382	082			
	OPTIONAL PF 5	4	168-0492	082			
28	PIPE PLUG	1	600-0004	028			

PC. NO.	DESCRIPTION	QTY	PART NO.	MATERIAL			
				S.F.	—	—	—
29	BUSHING (PACK)	1	600-0905	387			
30	FITTING(PACK)	1	508-0012	651			
31	PIPE PLUG						
	PF 3C	1	600-0002	087			
	PF 4C	1	600-0002	087			
	PF 5E	1	600-0003	087			
31A	PIPE COUPLING						
	PF 3C	1	600-0721	387			
	PF 4C	1	600-0721	387			
	PF 5E	1	600-0722	387			
31B	NIPPLE						
	PF 3C	1	600-1103	387			
	PF 4C	1	600-1103	387			
	PF 5E	1	600-1254	387			
32	GASKET						
	PF 3C	1	364-1343	803			
	PF 4C	1	364-1344	803			
	PF 5E	1	364-1345	803			
33	CAPSCREW						
	PF 3C	4	168-0382	082			
	PF 4C	4	168-0382	082			
	PF 5E	4	168-0560	082			
34	CAPSCREW						
	3x3x9	8	168-0487	082			
	4x4x9	8	168-0487	082			
	3x3x12	8	168-0560	082			
	4x4x12	8	168-0560	082			
	6x6x12 PF 4C	8	168-0560	082			
	6x6x12 PF 5E	8	168-0562	082			
	6x6x15	8	168-0632	082			
35	CAPSCREW						
	PF 3C	4	168-0490	082			
	PF 4C	4	168-0490	082			
	PF 5E	8	168-0560	082			
36	SLEEVE (PACK)						
	PF 3 & 4	1	756-0414	108			
	PF 5	1	756-0415	108			
	CERAMIC COATED						
	PF 3 & 4	1	756-0554	548			
	PF 5	1	756-0555	548			
	MECHANICAL SEALS						
	PF 3	1	756-0410	208			
	PF 4	1	756-0411	208			
	PF 5	1	756-0412	208			
	DURA BRO PF 5	1	756-0578	208			

660A SERIES

SECTION **660A** PAGE **9**
DATED DECEMBER 1991
SUPERSEDES PAGE 9
DATED NOVEMBER 1988

PARTS LIST

PC. NO.	DESCRIPTION	QTY	PART NO.	MATERIAL			
				S.F.	—	—	—
37	RETAINING RING						
	PF 3 & 4	1	676-0470	088			
	PF 5	1	676-0471	088			
38	GASKET						
	PF 3 & 4	1	364-0581	457			
	PF 5	1	364-0584	457			
39	RETAINING RING						
	PF 3		NOT REQUIRED				
	PF 4	1	676-0294	088			
	PF 5	1	676-0460	088			
40	PACKING						
	PF 3 & 4	5	564-0114	802			
	PF 5	5	564-0183	802			
41	LANTERN RING						
	PF 3 & 4	1	676-1105	512			
	PF 5	1	676-1106	512			
42	O-RING (PACK)						
	PF 3 & 4	1	364-0425	457			
	PF 5	1	364-2101	457			
43	SLINGER (PACK)						
	PF 3 & 4	1	764-0021	478			
	PF 5	1	764-0023	478			
	MECHANICAL SEALS						
	SLINGER						
	PF 3 & 4	1	764-0020	478			
44	GLAND						
	661A PACK						
	PF 3 & 4	1	372-0320	010			
	PF 5	1	372-0321	010			
	662A & 663A PACK						
	PF 3 & 4	1	372-0515	319			
	PF 5	1	372-0516	319			
	MECHANICAL SEAL						
	GLAND FOR						
	JOHN CRANE						
	TYPE 1, 21, 8TD						
	PF 3 & 4	1	372-0518	010			
	PF 5	1	372-0520	010			
	JOHN CRANE						
	TYPE 8B2						
	PF 3 & 4	1	372-0519	104			
	PF 5	1	372-0521	104			

PC. NO.	DESCRIPTION	QTY	PART NO.	MATERIAL			
				S.F.	—	—	—
44	DURAMETALLIC						
	TYPE CRO, BRO						
	PF 3 & 4	1	372-0524	010			
	PF 5	1	372-0520	010			
	DURAMETALLIC						
	TYPE RA						
	PF 3 & 4	1	372-0530	104			
	PF 5	1	372-0527	104			
	CHESTERTON						
	TYPE 880						
	PF 3 & 4	1	372-0530	104			
	PF 5	1	372-0531	104			
44A	CAPSCREW (PACK)	2	168-0718	082			
44B	HOSE CONNECTOR						
	(PACK) PF 3, 4, & 5	1	600-2966	503			
44C	HOSE (PACK)	1	872-0005	505			
44D	PIPE PLUG (PACK)	3	600-0004	511			
44E	GLAND CLAMP						
	661A (PACK)						
	PF 3 & 4	2	204-0116	360			
	PF 5	2	204-0121	360			
45	CAPSCREW						
	661A PACKING	2	168-0500	082			
	662A & 663A						
	PACKING	2	168-0502	082			
	MECHANICAL SEALS						
	CAPSCREWS		REFER TO FACTORY				
46	GASKET (SEAL)						
	PF 3 & 4	1	364-0074	803			
	PF 5	1	364-0075	803			
47	MECHANICAL						
	SEALS PF 3 & 4						
	J.C. 21 DBL.	1	712-6410	749			
	J.C. 8TD DBL.	1	712-6411	749			
	J.C. 88 CART.	1	712-6413	767			
	* J.C. 1 SINGLE	1	712-6409	678			
	J.C. 8B2 OUT.	1	712-6412	678			
	DURA CRO DBL.	1	712-6424	772			
	DURA X-200 CART.	1	712-6431	519			
	DURA RA OUT.	1	712-6425	566			
	CHEST. 241 CART.	1	712-6433	571			
	CHEST. 880 SINGLE	1	712-6435	571			

*REFER TO FACTORY FOR J.C. 1 SINGLE SEALS, COLLARS & SETSCREWS.

660A SERIES

PARTS LIST

PC. NO.	DESCRIPTION	QTY	PART NO.	MATERIAL			
				S.F.	—	—	—
47	POWER FRAME 5						
	J.C. 1 DBL.	1	712-6415	749			
	J.C. 8TD DBL.	1	712-6416	749			
	J.C. 88 CART.	1	712-6418	767			
	* J.C. 1 SINGLE	1	712-6414	678			
	J.C. 8B2 OUT.	1	712-6417	678			
	DURA CRO DBL.	1	712-6426	773			
	DURA BRO DBL.	1	712-6427	741			
	DURA RA OUT.	1	712-6428	566			
	CHEST. 241 CART.	1	712-6434	571			
	CHEST. 880 SINGLE	1	712-6436	571			
47A	BUSHING						
	FOR SINGLE SEALS						
	PF 3 & 4	1	224-0223	208			
	PF 5	1	224-0224	208			
48	SHAFT						
	PF 3C	1	728-0513	063			
	PF 4C	1	728-0514	063			
	PF 5E	1	728-0515	063			
49	BEARING INBOARD						
	PF 3C	1	068-0427	647			
	PF 4C	1	068-0162	647			
	PF 5E	1	068-0168	647			
49A	GREASE SHIELD						
	PF 4C	1	712-0280	087			
	PF 5E	1	712-0281	087			
50	BEARING OUTBOARD						
	PF 3C	1	068-2560	647			
	PF 4C	1	068-3004	647			
	PF 5E	2	068-2996	647			
50A	GREASE SHIELD						
	PF 3C	1	712-0283	087			
	PF 4C	1	676-0560	087			
	PF 5E	1	676-0398	010			
50B	RETAINING RING						
	PF 3C		Included with PC.50				
	PF 4C	1	676-0446	088			
	PF 5E	1	676-0447	088			
50C	RETAINING RING						
	PF 3C	1	676-0945	088			
	PF 4C	1	676-0943	088			
	LOCK WASHER						
	PF 5E	1	908-0416	080			
50D	LOCKNUT	PF 5E	1	544-0716	080		

PC. NO.	DESCRIPTION	QTY	PART NO.	MATERIAL			
				S.F.	—	—	—
51	BEARING CARTRIDGE						
	PF 3C	1	164-0472	010			
	PF 4C	1	164-0447	010			
	PF 5E	1	164-0448	010			
51A	O-Ring	PF 3C	1	364-0570	457		
52	GREASE SEAL						
	PF 3C	1	712-0233	653			
	PF 4C	1	712-0248	653			
	PF 5E	1	712-0241	653			
53	GREASE SEAL						
	PF 3C	1	712-0234	653			
	PF 4C	1	712-0240	653			
	PF 5E	1	712-0265	653			
54	KEY, SLEEVE	1	472-0010	087			
55	KEY, SHAFT						
	PF 3C	1	472-0247	087			
	PF 4C	1	472-0250	087			
	PF 5E	1	472-0390	087			
56	POWER FRAME						
	HOUSING PF 3C	1	356-0203	010			
	PF 4C	1	356-0044	010			
	PF 5E	1	356-0045	010			
57	PIPE PLUG						
	PF 3C		NOT REQUIRED				
	PF 4C	1	600-0001	087			
	PF 5E	1	600-0001	087			
58	GREASE FITTING						
	PF 3C	1	508-0005	651			
	PF 4C	1	508-0015	651			
	PF 5E	1	508-0010	651			
59	CAPSCREWS						
	PF 3C	4	168-0492	082			
	PF 4C	3	168-0492	082			
	PF 5E	4	168-0564	082			
60	SHIM PACK						
	PF 3C	1	740-0070	517			
	CAPSCREW PF 4C	3	168-0201	080			
	PF 5E	4	168-0202	080			
61	JAM NUT	PF 3C		NOT REQUIRED			
	PF 4C	3	544-0312	080			
	PF 5E	4	544-0316	080			
62	PIPE PLUG						
	PF 3C		NOT REQUIRED				
	PF 4C	1	600-0001	087			
	PF 5E	1	600-0001	087			

660A SERIES

PARTS LIST

SECTION 660A PAGE 11

DATED DECEMBER 1991

SUPERSEDES PAGE 11

DATED NOVEMBER 1988

PC. NO.	DESCRIPTION	QTY	PART NO.	MATERIAL			
				S.F.	—	—	—
63	GREASE FITTING						
	PF 3C	1	508-0001	651			
	PF 4C	1	508-0015	651			
	PF 5E	1	508-0010	651			
64	GASKET 662A, 663A & 664A						
	3" SUCTION	1	364-0605	603			
	4" SUCTION	1	364-0607	603			
	6" SUCTION	1	364-0609	603			
65	ELBOWS 662A, 663A & 664A						
	(STD.) 3x3	1	600-4581	010			
	(CLEANOUT) 3x3	1	816-0739	010			
	3x4	1	816-0742	010			
	(STD.) 4x4	1	600-4533	010			
	(CLEANOUT) 4x4	1	816-1015	010			
	4x6	1	816-0740	010			
	STD. W/CLNOUT 6x6	1	816-1018	010			
	6x8	1	816-1019	010			
66	CAPSCREW						
	3" SUCTION	4	168-0562	082			
	4" SUCTION	2	168-0564	082			
	4" SUCTION	6	168-0570	082			
66A	WASHER						
	3" SUCTION	3	908-0112	080			
66B	CAPSCREW						
	3" SUCTION	3	168-0388	082			
67	GASKET						
	3x3	1	364-1041	453			
	3x4	1	364-1042	453			
	4x4	1	364-1043	453			
	4x6	1	364-1043	453			
	6x6	1	364-1048	478			
	6x8	1	364-1048	478			
68	HANDHOLE COVER						
	3x3	1	260-0093	010			
	3x4	1	260-0089	010			
	4x4	1	260-0088	010			
	4x6	1	260-0088	010			
	6x6	1	260-0649	010			
	6x8	1	260-0649	010			

PC. NO.	DESCRIPTION	QTY	PART NO.	MATERIAL			
				S.F.	—	—	—
69	CAPSCREW						
	3x3	2	168-0494	082			
	3x4	2	168-0494	082			
	4x4	2	168-0564	082			
	4x6	2	168-0564	082			
	6x6	4	168-0562	082			
	6x8	4	168-0562	082			
69A	NUT						
	3x3	2	544-0113	080			
	3x4	2	544-0113	080			
	4x4	2	544-0115	080			
	4x6	2	544-0115	080			
	6x6		NOT REQUIRED				
	6x8		NOT REQUIRED				
69B	WASHER						
	3x3	4	908-0114	080			
	3x4	4	908-0114	080			
	4x4	4	908-0116	080			
	4x6	4	908-0116	080			
	6x6		NOT REQUIRED				
	6x8		NOT REQUIRED				
70	PIPE PLUG						
	3x3	1	600-0006	028			
	3x4	1	600-0008	028			
	4x4	1	600-0008	028			
	4x6	1	600-0008	028			
	6x6	1	600-0009	028			
	6x8	1	600-0009	028			
71	PIPE PLUG						
	3x3	1	600-0002	087			
	3x4	1	600-0002	087			
	4x4	1	600-0002	087			
	4x6	1	600-0002	087			
	6x6	1	600-0002	087			
72	DRIVE PINS	2	708-0013	365			
73	NAMEPLATE	1	532-0045	114			
74	LEAKAGE ACCUMULATOR KIT 662A & 663A						
	PF 3 & 4	1	476-0279	645			
	PF 5	1	476-0280	645			
75	SEALANT (REQUIRED WITH PIECE 44 PACKED 662A & 663A	1	716-0025	621			

