

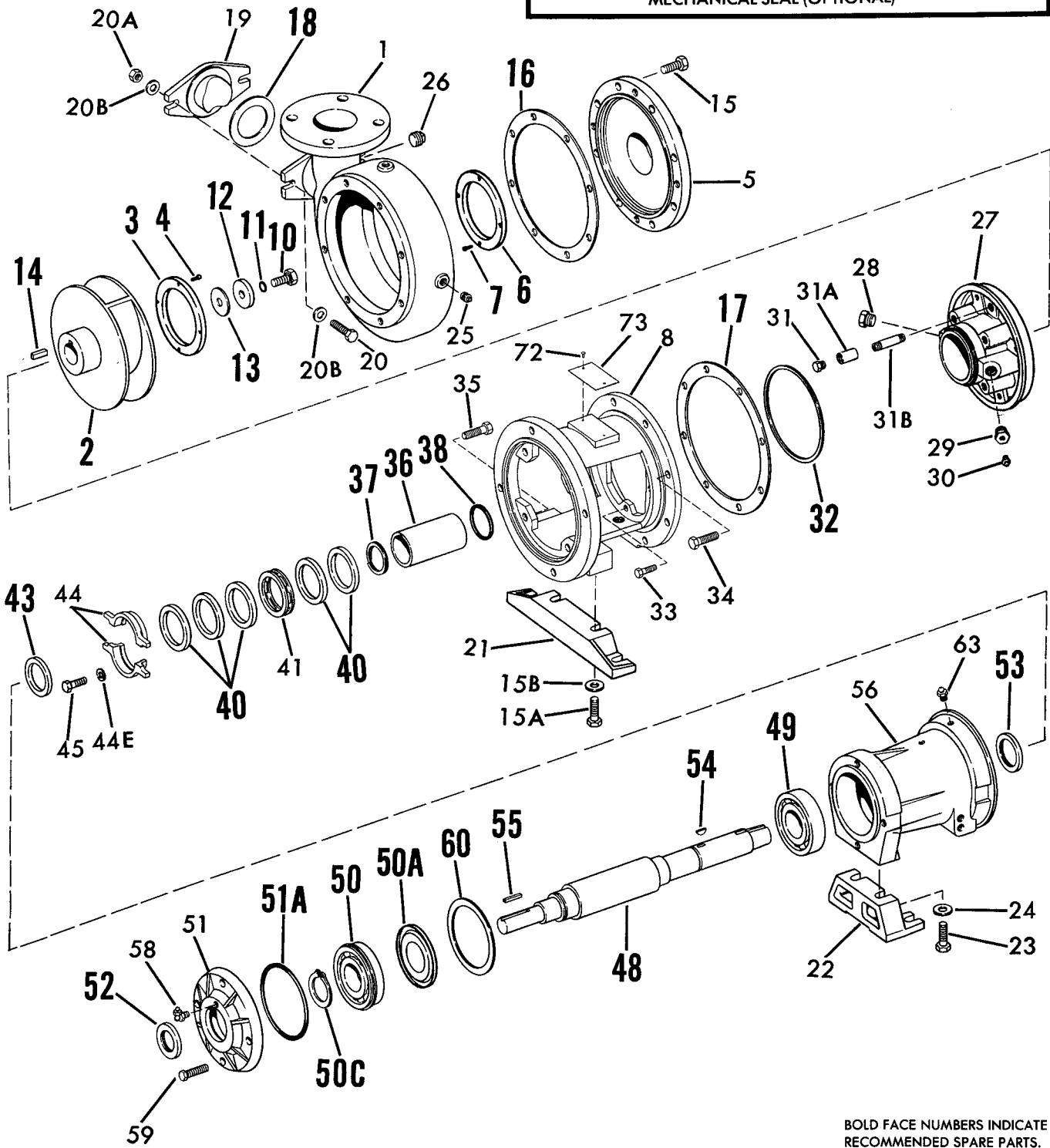
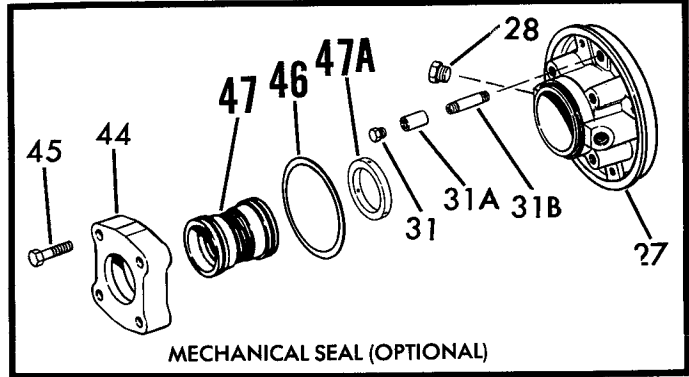
650A SERIES
REPAIR PARTS INDEX

SECTION **650P** PAGE **1**
DATED OCTOBER 1993
SUPERSEDES PAGE 1
DATED NOVEMBER 1988

PARTS ARE LISTED BY POWER FRAME AND LIQUID ENDS. SELECT POWER FRAME BY PUMP SIZE AND SPEED FROM CHART BELOW.

PUMP SIZE	RPM			
	1750	1150	875	700
3x3x7	3C	3C		
4x4x7	3C	3C		
3x3x9	3C	3C		
4x4x9A	3C	3C	3C	
4x4x9B	4C	4C	4C	4C
4x4x12	5E	4C	4C	4C
4x6x15	5F	5E	5E	5E

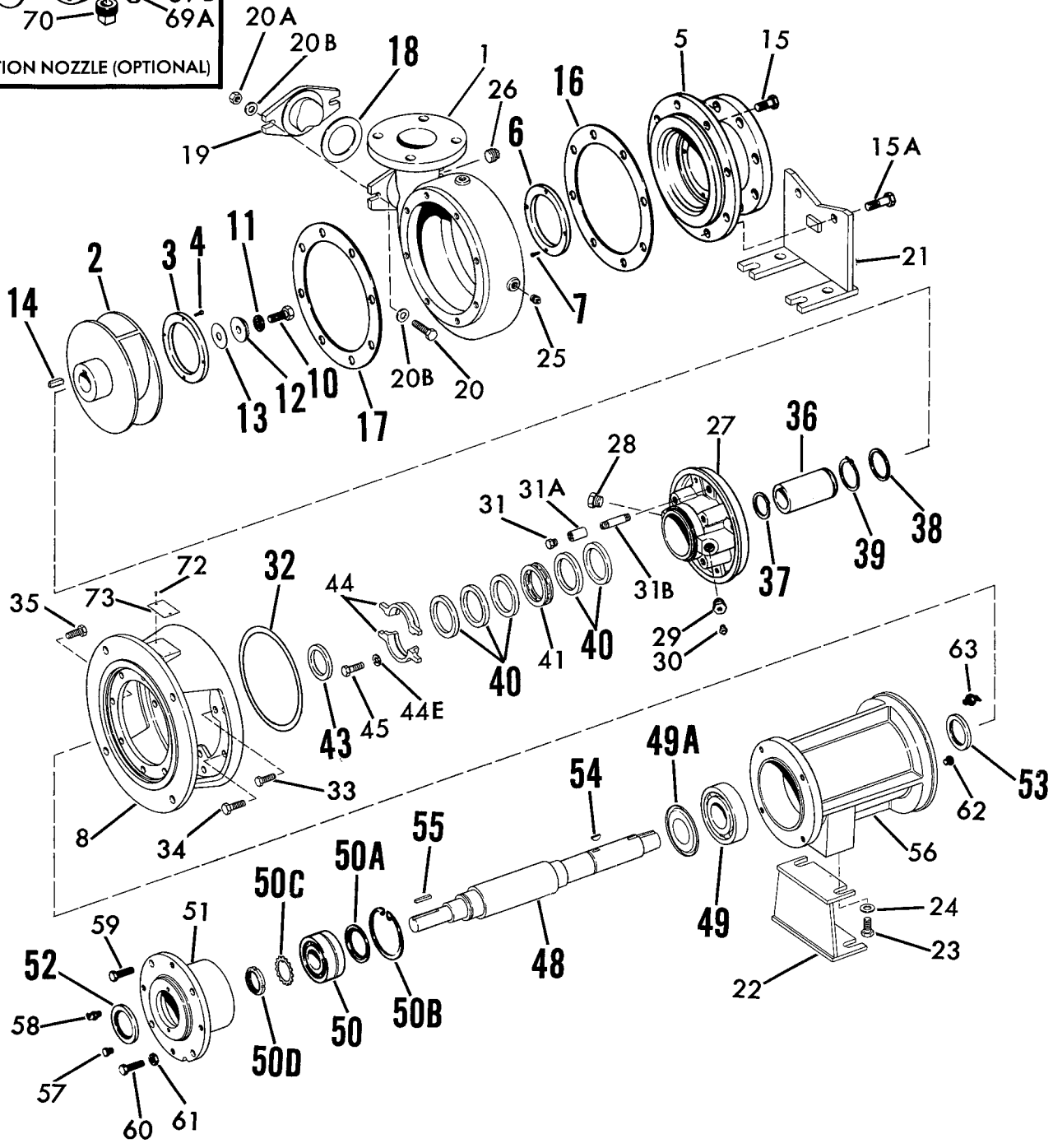
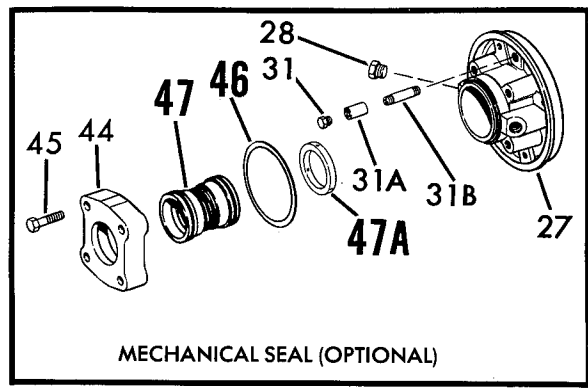
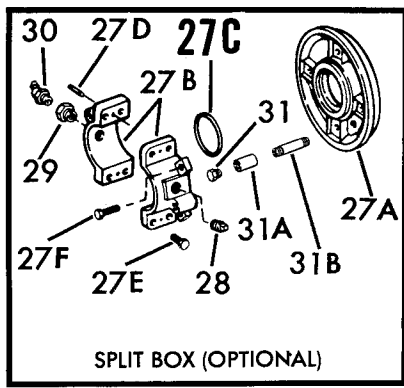
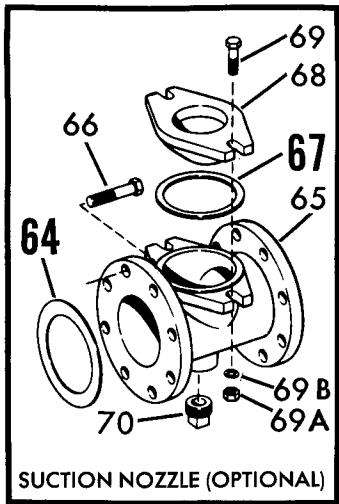
650A SERIES
MODEL 651A PF 3C
PIECE NUMBERS



BOLD FACE NUMBERS INDICATE
RECOMMENDED SPARE PARTS.

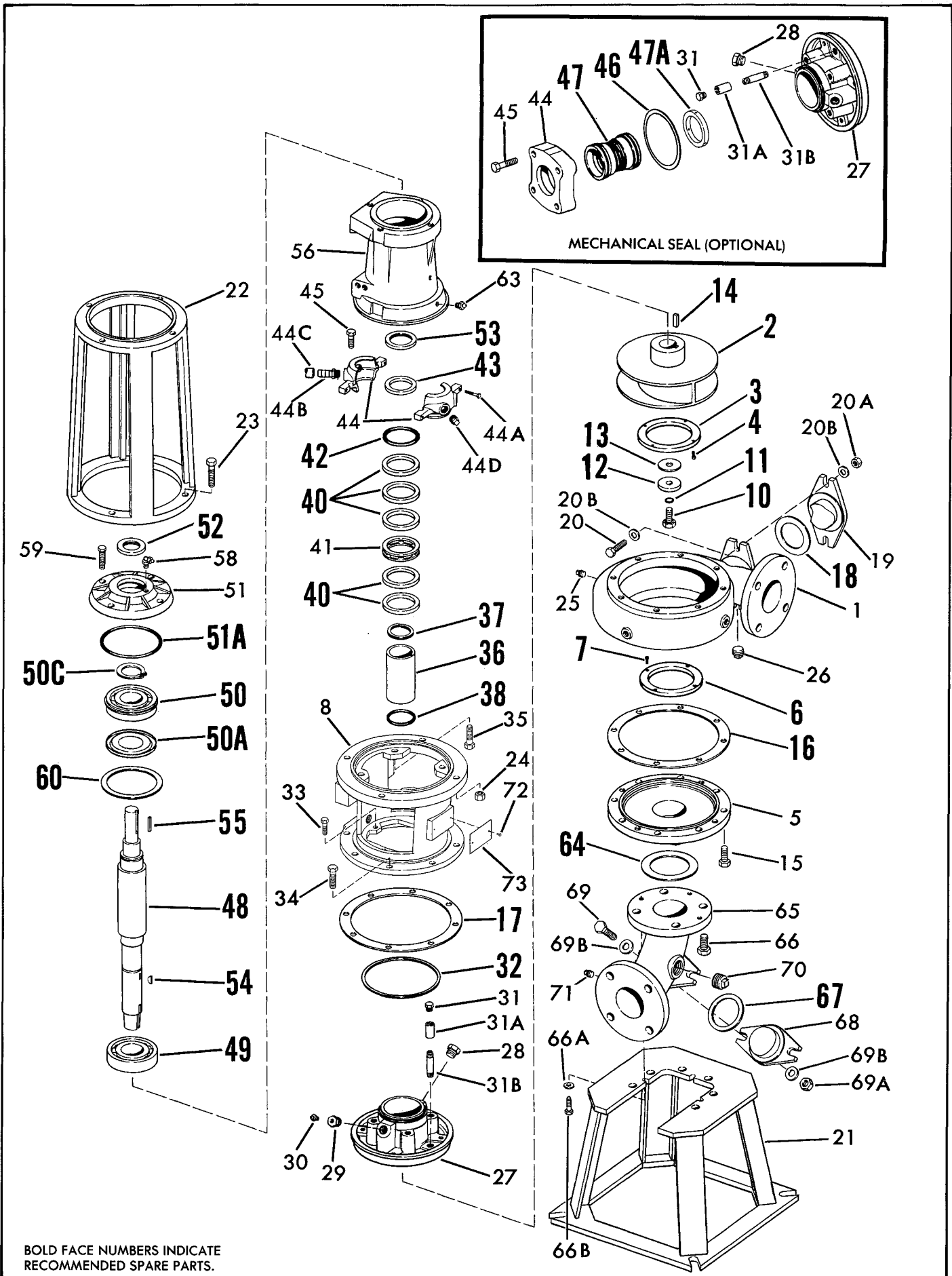
650A SERIES
MODEL 651A PF4 & 5
PIECE NUMBERS

SECTION 650P PAGE 3
 DATED OCTOBER 1993
 SUPERSEDES PAGE 3
 DATED NOVEMBER 1988



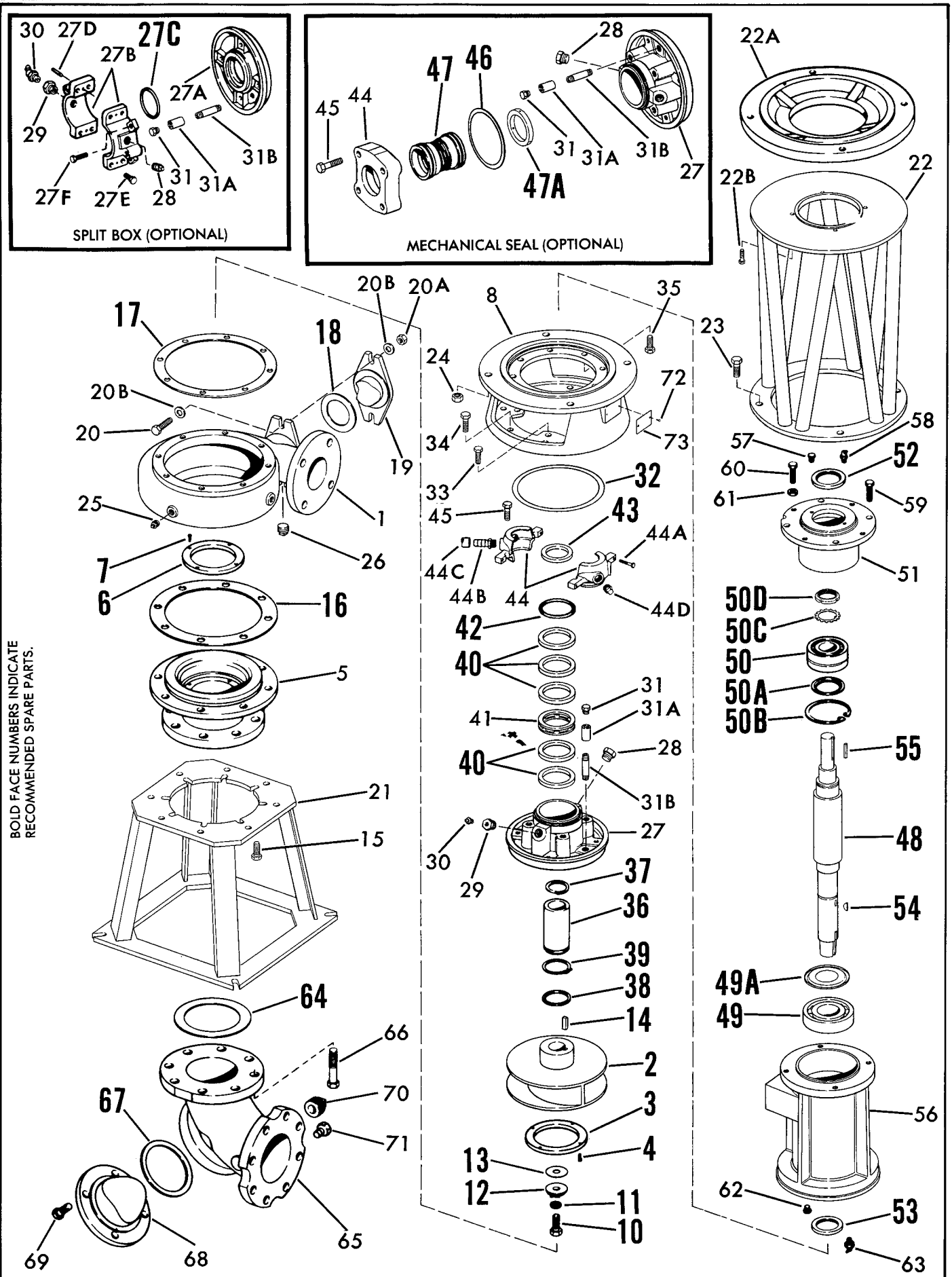
BOLD FACE NUMBERS INDICATE
 RECOMMENDED SPARE PARTS.

650A SERIES
MODEL 652A-653A PF 3C
PIECE NUMBERS

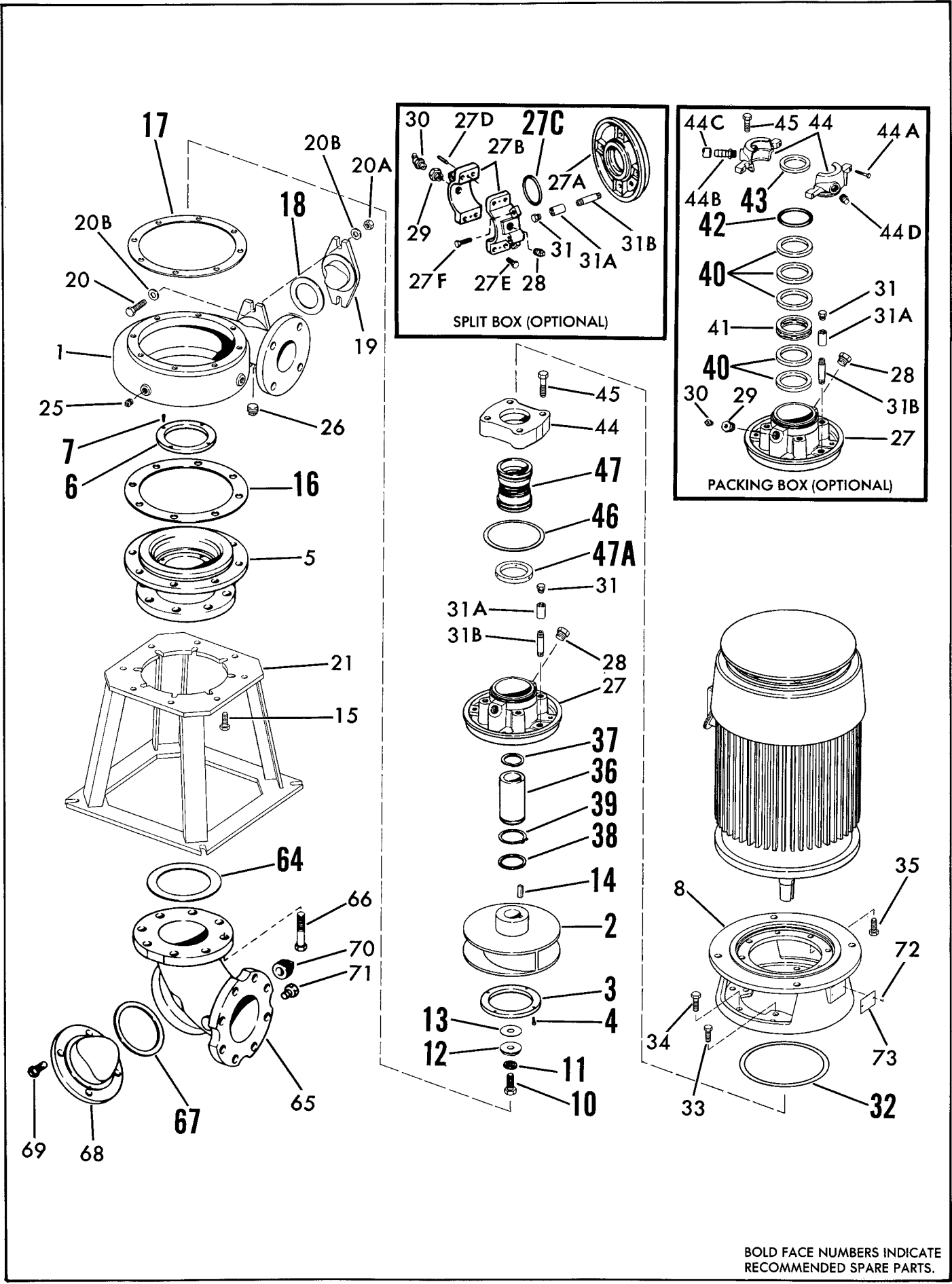


650A SERIES
MODEL 652A-653A PF 4 & 5
PIECE NUMBERS

SECTION 650P PAGE 5
 DATED OCTOBER 1993
 SUPERSEDES PAGE 5
 DATED NOVEMBER 1988



650A SERIES
MODEL 654A
PIECE NUMBERS



650A SERIES

SECTION 650P PAGE 7
DATED OCTOBER 1993
SUPERSEDES PAGE 7
DATED NOVEMBER 1988

PARTS LIST

PC. NO.	DESCRIPTION	QTY	PART NO.	MATERIAL				PC. NO.	DESCRIPTION	QTY	PART NO.	MATERIAL							
				B.F.	A.B.	A.I.	S.S.					B.F.	A.B.	A.I.	S.S.				
1	CASING							4	SETScrew										
	3x3x7	1	180-2405	010					3x3x7	4	708-0061	104							
	4x4x7	1	180-2398	010					4x4x7	4	708-0067	104							
	3x3x9	1	180-0632	010					3x3x9	4	168-0010	104							
	4x4x9A	1	180-2399	010					4x4x9A	4	708-0067	104							
	4x4x9B	1	180-2400	010					4x4x9B	4	168-0217	104							
	4x4x12	1	180-2401	010					4x4x12 PF 4	4	168-0217	104							
	4x4x15	1	180-2402	010					4x4x12 PF 5	4	168-0217	104							
	4x6x15	1	180-2402	010					4x6x15	4	168-0045	104							
CASING WITH IMP. & CASE WEARING RINGS																			
	3x3x7	1	180-2406	010															
2	IMPELLER							5	SUCTION COVER										
	3x3x7	1	443-2515	010					3x3x7		NOT REQUIRED								
	4x4x7	1	443-2487	010					4x4x7	1	816-1236	010							
	3x3x9	1	443-2549	010					3x3x9	1	816-0695	010							
	4x4x9A	1	443-2489	010					4x4x9A	1	816-1239	010							
	4x4x9B	1	443-2491	010					4x4x9B	1	816-1242	010							
	4x4x12 PF 4	1	443-2497	010					4x4x12	1	816-1245	010							
	4x4x12 PF 5	1	443-2493	010					4x6x15	1	816-1248	010							
	4x6x15	1	443-2495	010															
	IMPELLER WITH WEARING RING									SUCTION COVER WITH IMP. RING									
		3x3x7	1	443-2517	644		646			3x3x7		NOT REQUIRED							
		4x4x7	1	443-2488	644		646			4x4x7	1	816-1237	010						
		3x3x9	1	443-2550	644		646			3x3x9		NOT AVAILABLE							
		4x4x9A	1	443-2490	644		646			4x4x9A	1	816-1240	010						
		4x4x9B	1	443-2492	644		646			4x4x9B	1	816-1243	010						
	4x4x12, PF 4	1	443-2498	644		646		4x4x12	1	816-1246	010								
	4x4x12, PF 5	1	443-2494	644		646		4x6x15	1	816-1249	010								
	4x6x15	1	443-2496	644		646													
3	IMPELLER WEARING RING							6	SUCTION COVER WEARING RING										
	3x3x7	1	676-1949	208		108			3x3x7	1	676-1950	208		108					
	4x4x7	1	676-2065	208		108			4x4x7	1	676-2065	208		108					
	3x3x9	1	676-1292	208		108													
	4x4x9A	1	676-2065	208		108													
	4x4x9B	1	676-2064	208		108													
	4x4x12, PF 4	1	676-2064	208		108													
	4x4x12, PF 5	1	676-2064	208		108													
	4x6x15	1	676-1918	208		108													

* HARDENED STAINLESS STEEL WEARING RING OPTION

650A SERIES

PARTS LIST

PC. NO.	DESCRIPTION	QTY	PART NO.	MATERIAL				PC. NO.	DESCRIPTION	QTY	PART NO.	MATERIAL					
				B.F.	A.B.	A.I.	S.S.					B.F.	A.B.	A.I.	S.S.		
6	SUCTION COVER							14	IMPELLER KEY								
	WEARING RING									PF 3C & 4C	1	472-0250	087				
	(CONT'D)									PF 5E & 5F	1	472-0391	087				
	3x3x9	1	676-1260	208		108			15	CAPSCREW 651A							
	4x4x9A	1	676-2065	208		108					3x3x7		NOT REQUIRED				
	4x4x9B	1	676-2064	208		108					4x4x7	8	168-0382	082			
4x4x12	1	676-2064	208		108		3x3x9	8			168-0489	082					
4x6x15	1	676-1918	208		108		4x4x9A	8			168-0488	082					
							4x4x9B	6	168-0560		082						
7	SETSCREW								4x4x12	6	168-0560	082					
	3x3x7	4	708-0061	104				4x6x15	6	168-0632	082						
	4x4x7	4	708-0067	104				652A, 653A & 654A									
	3x3x9	4	168-0010	104				3x3x7		NOT REQUIRED							
	4x4x9A	4	708-0067	104				4x4x7	8	168-0382	082						
	4x4x9B	4	168-0217	104				3x3x9	8	168-0489	082						
	4x4x12	4	168-0217	104				4x4x9A	8	168-0488	082						
	4x6x15	4	168-0045	104				4x4x9B	8	168-0560	082						
8	BRACKET								4x4x12	8	168-0560	082					
	3x3x7	1	116-0486	010				4x6x15	8	168-0636	082						
	4x4x7	1	116-0486	010				15A	CAPSCREW 651A								
	3x3x9	1	116-0487	010				3x3x7		2	168-0488	082					
	4x4x9A	1	116-0487	010				4x4x7		2	168-0488	082					
	4x4x9B	1	116-0489	010				3x3x9		2	168-0488	082					
	4x4x12, PF 4	1	116-0490	010				4x4x9A		2	168-0488	082					
	4x4x12, PF 5	1	116-0491	010				4x4x9B		2	168-0564	082					
4x6x15	1	116-0492	010				4x4x12	2		168-0564	082						
							4x6x15	2		168-0636	082						
10	IMPELLER SCREW																
	PF 3C & 4C	1	168-1008	082													
	PF 5E & 5F	1	168-1009	082													
11	IMP SCREW SEAL																
	PF 3C & 4C	1	908-1283	999													
	PF 5E & 5F	1	908-1284	999													
12	IMPELLER WASHER																
	PF 3C	1	908-0605	087													
	PF 4C	1	908-0457	062													
	PF 5E & 5F	1	908-0458	062													
13	IMPELLER																
	WASHER GASKET																
	PF 3C	1	364-2038	803													
	PF 4C	1	364-2025	803													
	PF 5E & 5F	1	364-2029	803													
14	IMPELLER KEY																
	PF 3C & 4C	1	472-0250	087													
	PF 5E & 5F	1	472-0391	087													
	CAPSCREW 651A																
	3x3x7		NOT REQUIRED														
	4x4x7	8	168-0382	082													
	3x3x9	8	168-0489	082													
	4x4x9A	8	168-0488	082													
	4x4x9B	6	168-0560	082													
	4x4x12	6	168-0560	082													
15	CAPSCREW 651A																
	3x3x7		NOT REQUIRED														
	4x4x7	8	168-0382	082													
	3x3x9	8	168-0489	082													
	4x4x9A	8	168-0488	082													
	4x4x9B	8	168-0560	082													
	4x4x12	8	168-0560	082													
	4x6x15	8	168-0636	082													
	15A	CAPSCREW 651A															
	3x3x7		2	168-0488	082												
4x4x7	2		168-0488	082													
3x3x9	2		168-0488	082													
4x4x9A	2		168-0488	082													
4x4x9B	2		168-0564	082													
4x4x12	2		168-0564	082													
4x6x15	2		168-0636	082													
15B	WASHER 651A																
3x3x7		2	908-0114	080													
4x4x7		2	908-0114	080													
3x3x9		2	908-0114	080													
4x4x9A		2	908-0114	080													
16	GASKET																
	3x3x7		NOT REQUIRED														
	4x4x7	1	364-1014	603													
	9&9A CASE BORE	1	364-1015	603													
	9B CASE BORE	1	364-1324	803													
	12" CASE BORE	1	364-1326	803													
15" CASE BORE	1	364-1327	803														

* HARDENED STAINLESS STEEL WEARING RING OPTION

650A SERIES

SECTION 650P PAGE 9
DATED OCTOBER 1993
SUPERSEDES PAGE 9
DATED NOVEMBER 1988

PARTS LIST

PC NO.	DESCRIPTION	QTY	PART NO.	MATERIAL				PC NO.	DESCRIPTION	QTY	PART NO.	MATERIAL				
				B.F.	A.B.	A.I.	S.S.					B.F.	A.B.	A.I.	S.S.	
17	GASKET *							21	PUMP BASE							
	7" CASE BORE	1	364-1014	603					652A,653A & 654A							
	9&9A CASE BORE	1	364-1015	603					7" CASE BORE	1	060-1387	087				
	9B CASE BORE	1	364-1324	803					9 & 9A CASE BORE	1	060-1387	087				
	12" CASE BORE	1	364-1326	803					9B CASE BORE	1	060-1387	087				
	15" CASE BORE	1	364-1327	803				12" CASE BORE	1	060-1387	087					
18	GASKET							22	PUMP SUPPORT							
	3x3x7	1	364-1041	453					REAR FOOT 651A							
	4x4x7	1	364-1041	453					7" CASE BORE	1	820-0188	010				
	3x3x9	1	364-1041	453					9 & 9A CASE BORE	1	820-0188	010				
	4x4x9A	1	364-1041	453					9B CASE BORE	1	820-1624	087				
	4x4x9B	1	364-1320	457					12" CASE BORE PF4	1	820-1628	087				
	4x4x12	1	364-1320	457					12" CASE BORE PF5	1	820-1629	087				
4x6x15	1	364-1320	457				15" CASE BORE	1	820-1625	087						
19	HANDHOLE COVER							22A	MOTOR SUPPORT							
	3x3x7	1	260-0098	010					653A							
	4x4x7	1	260-0735	010					PF 3 & 4	1	820-1397	010				
	3x3x9	1	260-0101	010					≤ 284 HPH PF 5	1	820-1617	087				
	4x4x9A	1	260-0736	010					≥ 284 HPH PF 5	1	820-1620	087				
	4x4x9B	1	260-0737	010					ADAPTOR 653A							
	4x4x12	1	260-0738	010					≥ 284 HPH PF 3&4	1	008-0340	010				
4x6x15	1	260-0738	010													
20	CAPSCREW							22B	CAPSCREW 653A							
	3x3x7	2	168-0388	082					≥ 284 HPH PF 3&4	1	168-0562	082				
	4x4x7	2	168-0382	082												
	3x3x9	2	168-0388	082					23	CAPSCREW						
	4x4x9A	2	168-0382	082						REAR FOOT 651A						
	4x4x9B	2	168-0562	082						PF 3C	2	168-0490	082			
	4x4x12	2	168-0562	082						PF 4C	2	168-0560	082			
4x6x15	2	168-0562	082					PF 5E & 5F	2	168-0668	082					
								CAPSCREW 653A								
20A	NUT 3x3x7	2	544-0109	080					PF 3C & 4C	4	168-0494	082				
	3x3x9	2	544-0109	080					PF 5E & 5F	4	168-0640	082				
20B	WASHER 3x3x7	4	908-0112	080				24	WASHER							
	3x3x9	4	908-0112	080					REAR FOOT 651A							
21	PUMP SUPPORT FRONT FOOT 651A									PF 3C	2	908-0114	080			
	7" CASE BORE	1	820-0186	010						PF 4C	2	908-0116	080			
	9 & 9A CASE BORE	1	820-0186	010						PF 5E & 5F	2	908-0118	080			
	9B CASE BORE	1	820-0509	087					NUT 653A							
	12" CASE BORE	1	820-0507	087					PF 3C & 4C	4	544-0113	080				
	15" CASE BORE	1	820-0505	087					PF 5E & 5F	4	544-0117	080				

*FOR MODEL 654A REFER TO FACTORY FOR SHIM GASKETS.

< = LESS THAN ≥ = GREATER THAN OR EQUAL TO

650A SERIES

PARTS LIST

PC NO.	DESCRIPTION	QTY	PART NO.	MATERIAL				PC NO.	DESCRIPTION	QTY	PART NO.	MATERIAL							
				B.F.	A.B.	A.I.	S.S.					B.F.	A.B.	A.I.	S.S.				
47	MECHANICAL SEAL							50	BEARING OUTBOARD										
	POWER FRAME 3&4																		
	J.C. 21 DBL.	1	712-6410	749					PF 3C	1	068-2560	647							
	J.C. 8TD DBL.	1	712-6411	749					PF 4C	1	068-3004	647							
	J.C. 88 CART.	1	712-6413	767					PF 5E	2	068-2996	647							
	* J.C. 1 SINGLE	1	712-6409	678					PF 5F	2	068-2996	647							
	J.C. 8B2 OUT.	1	712-6412	678															
	DURA CRO DBL.	1	712-6424	772															
	DURA X200 CART.	1	712-6431	519															
	DURA RA OUT.	1	712-6425	566															
	CHEST. 241 CART.	1	712-6433	571															
	CHEST. 880 SINGLE	1	712-6435	571															
	POWER FRAME 5																		
	J.C. 1 DBL.	1	712-6415	749															
	J.C. 8TD DBL.	7	712-6416	749															
	J.C. 88 CART.	1	712-6418	767															
	* J.C. 1 SINGLE	1	712-6414	678															
	J.C. 882 OUT.	1	712-6417	678															
DURA CRO DBL.	1	712-6426	773																
DURA BRO DBL.	1	712-6427	741																
DURA RA OUT.	1	712-6428	566																
CHEST. 241 CART.	1	712-6434	571																
CHEST. 880 SINGLE	1	712-6436	571																
47A	BUSHING							51A	O-RING	PF 3C	1	364-0570	457						
	FOR SINGLE SEALS																		
	PF 3 & 4	1	224-0223	208															
	PF 5	1	224-0224	208															
48	SHAFT							52	GREASE SEAL										
	PF 3C	1	728-0513	063					PF 3C	1	712-0233	653							
	PF 4C	1	728-0514	063					PF 4C	1	712-0248	653							
	PF 5E & 5F	1	728-0515	063				PF 5E & 5F	1	712-0241	653								
49	BEARING INBOARD							53	GREASE SEAL										
	PF 3C	1	068-0427	647					PF 3C	1	712-0234	653							
	PF 4C	1	068-0162	647					PF 4C	1	712-0240	653							
	PF 5E	1	068-0168	647					PF 5E & 5F	1	712-0265	653							
	PF 5F	1	068-0046	647															
49A	GREASE SHIELD							54	KEY, SLEEVE										
	PF 4C	1	712-0280	087															
	PF 5E & 5F	1	712-0281	087															
								55	KEY, SHAFT										
									PF 3C	1	472-0247	087							
									PF 4C	1	472-0250	087							
								PF 5E & 5F	1	472-0390	087								

* REFER TO FACTORY FOR J.C. 1 SINGLE SEALS, COLLARS AND SETSCREWS.

650A SERIES

SECTION 650P PAGE 13
DATED OCTOBER 1993
SUPERSEDES PAGE 13
DATED NOVEMBER 1988

PARTS LIST

PC. NO.	DESCRIPTION	QTY	PART NO.	MATERIAL				PC. NO.	DESCRIPTION	QTY	PART NO.	MATERIAL						
				B.F.	A.B.	A.I.	S.S.					B.F.	A.B.	A.I.	S.S.			
56	POWER FRAME HOUSING							65	ELBOWS (CONT'D)									
	PF 3C	1	356-0203	010					(STD) 4x4	1	600-4533	010						
	PF 4C	1	356-0044	010					(CLEANOUT) 4x4	1	816-1015	010						
	PF 5E & 5F	1	356-0045	010				4x6	1	816-0740	010							
57	PIPE PLUG							65	STD.W/CLEANOUT									
	PF 3C		NOT REQUIRED						6x6	1	816-1018	010						
	PF 4C	1	600-0001	087					6x8	1	816-1019	010						
	PF 5E & 5F	1	600-0001	087														
58	GREASE FITTING							66	CAPSCREW									
	PF 3C	1	508-0005	651					3" SUCTION	4	168-0562	082						
	PF 4C	1	508-0015	651					4" SUCTION	2	168-0564	082						
	PF 5E & 5F	1	508-0010	651					4" SUCTION	6	168-0570	082						
								6" SUCTION	8	168-0636	082							
59	CAPSCREWS							66A	WASHER									
	PF 3C	4	168-0492	082					3" SUCTION	3	908-0112	080						
	PF 4C	3	168-0492	082														
	PF 5E & 5F	4	168-0564	082				66B	CAPSCREW									
									3" SUCTION	3	168-0388	082						
60	SHIM PACK							67	GASKET 3x3	1	364-1041	453						
	PF 3C	1	740-0070	517					3x4	1	364-1042	453						
	CAPSCREWS PF 4C	3	168-0201	080					4x4	1	364-1043	453						
	PF 5E & 5F	4	168-0202	080					4x6	1	364-1043	453						
61	JAM NUT							67	6x6	1	364-1048	478						
	PF 3C		NOT REQUIRED						6x8	1	364-1048	478						
	PF 4C	3	544-0312	080														
	PF 5E & 5F	4	544-0316	080				68	HANDHOLE COVER									
62	PIPE PLUG							67	3x3	1	260-0093	010						
	PF 3C		NOT REQUIRED						3x4	1	260-0089	010						
	PF 4C	1	600-0001	087					4x4	1	260-0088	010						
	PF 5E & 5F	1	600-0001	087					4x6	1	260-0088	010						
63	GREASE FITTING							67	6x6	1	260-0649	010						
	PF 3C	1	508-0001	651					6x8	1	260-0649	010						
	PF 4C	1	508-0015	651														
	PF 5E & 5F	1	508-0010	651				69	CAPSCREW									
64	GASKET 652A, 653A & 654A							67	3x3	2	168-0494	082						
	3" SUCTION	1	364-0605	603					3x4	2	168-0494	082						
	4" SUCTION	1	364-0607	603					4x4	2	168-0564	082						
	6" SUCTION	1	364-0609	603					4x6	2	168-0564	082						
65	ELBOWS 652A, 653A & 654A							67	6x6	4	168-0562	082						
	(STD) 3x3	1	600-4581	010					6x8	4	168-0562	082						
	(CLEANOUT) 3x3	1	816-0739	010														
	3x4	1	816-0742	010					69A	NUT								
								3x3	2	544-0113	080							
								3x4	2	544-0113	080							
								4x4	2	544-0115	080							
								4x6	2	544-0115	080							

