

640 SERIES

REPAIR PARTS INDEX

PARTS LISTED ARE FOR STANDARD PUMPS AND SOME OPTIONAL PUMP BEARINGS.

PUMP SIZE	PAGE
2 x 2 x 7	5-6
3 x 3 x 7	
2 x 2 x 9	
3 x 3 x 9	

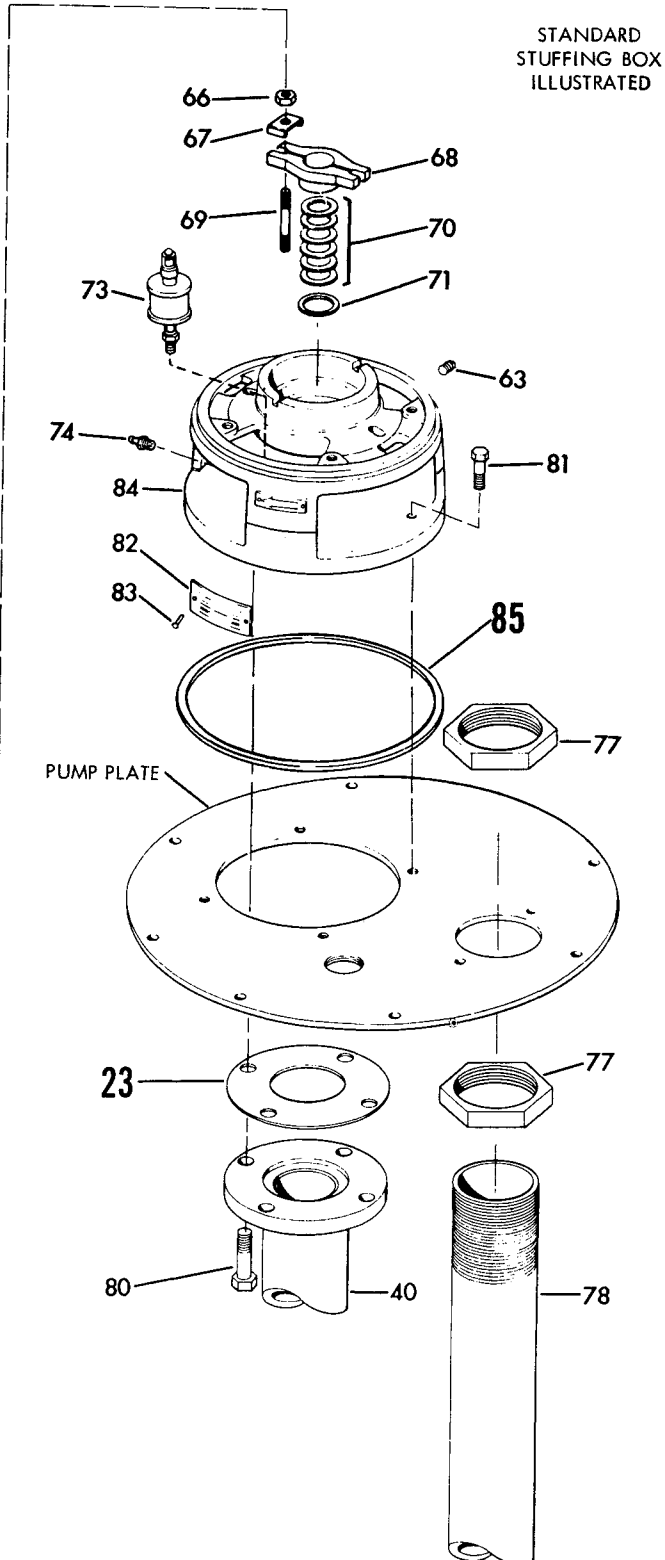
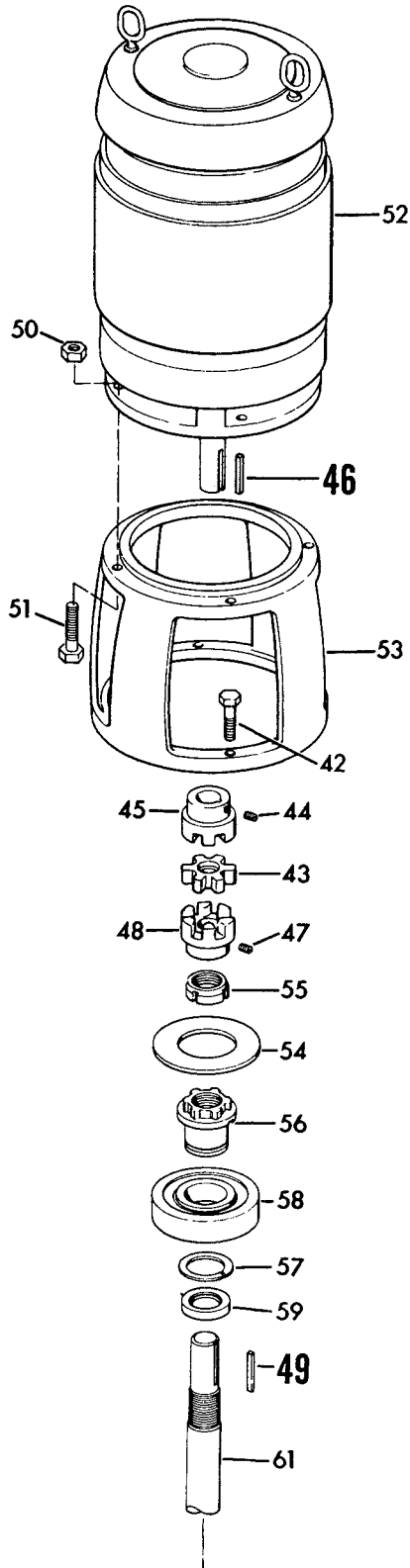
PIECE NO.

- 22A - A ROD GUIDE IS REQUIRED ON ALL REPLACEMENT COVERS.
- 26 - STANDARD PUMP BEARING IS LISTED. REFER TO PART NUMBERS 27 THRU 37 FOR SPECIAL OPTION BEARINGS. FOR ALL PIT DEPTHS 10' AND DEEPER, A RELIEF TYPE PUMP BEARING IS STANDARD.
- 39 - ONE SET OF FOUR (4) CAPSCREWS AND NUTS REQUIRED FOR EACH GUIDE BEARING JOINT.
- 40 - ONE SUPPORT PIPE IS REQUIRED FOR PIT DEPTHS UP TO 6'0".
TWO SUPPORT PIPES ARE REQUIRED FOR PIT DEPTHS 6'-6" TO 11'-0".
THREE SUPPORT PIPES ARE REQUIRED FOR PIT DEPTHS 11'-6" TO 16'-0"
- 41 - ONE GUIDE BEARING IS REQUIRED FOR PIT DEPTHS 6'-6" TO 11'-0".
TWO GUIDE BEARINGS ARE REQUIRED FOR PIT DEPTHS 11'-6" TO 16'-0".
- 60-61 - PIT DEPTHS TO 11'-6" REQUIRED ONE SHAFT (61). PIT DEPTHS 12'-0" TO 17'-6" REQUIRES ONE PUMP SHAFT (61C), ONE HEAD SHAFT (61A) AND ONE LINE COUPLING (60).

640 SERIES

MODEL 641-642

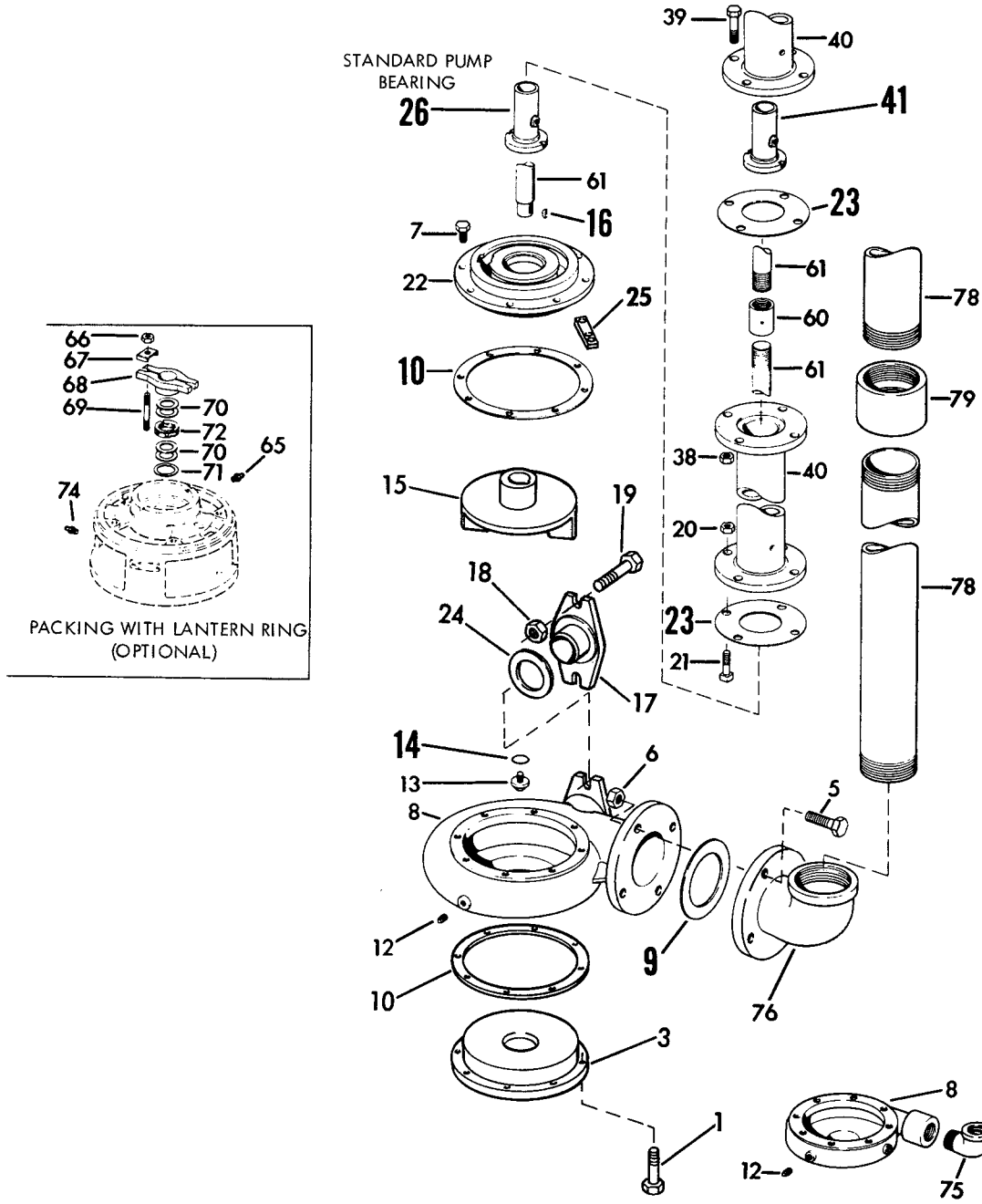
PIECE NUMBERS



640 SERIES

MODEL 641-642

PIECE NUMBERS



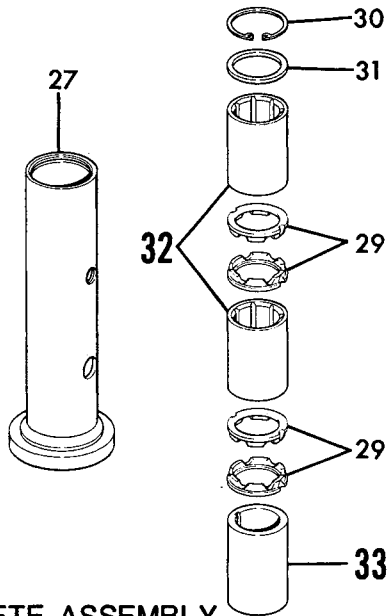
NOTE: Recommended spare parts shown in bold face type.

640 SERIES

MODEL 641-642 PIECE NUMBERS

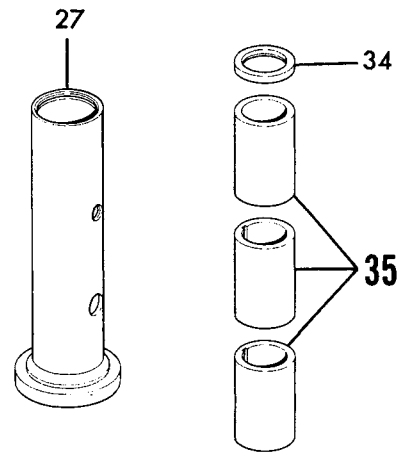
OPTIONAL RELIEF TYPE BEARINGS

CUTLESS RUBBER



27A-COMPLETE ASSEMBLY

METAL BUSHING *

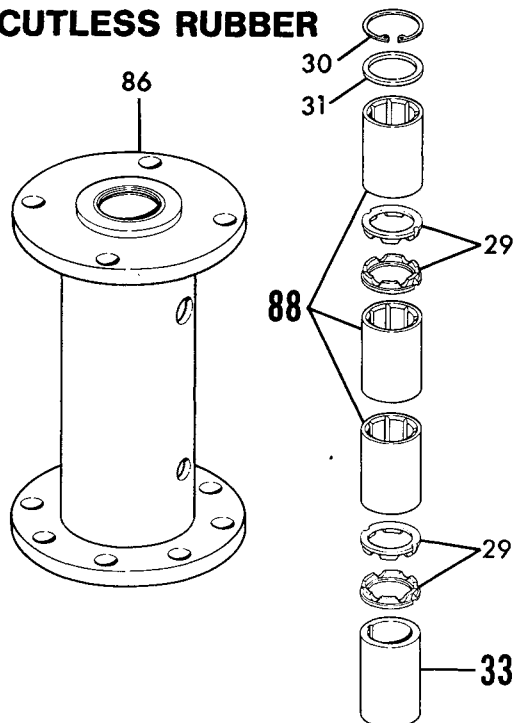


27B-COMPLETE ASSEMBLY

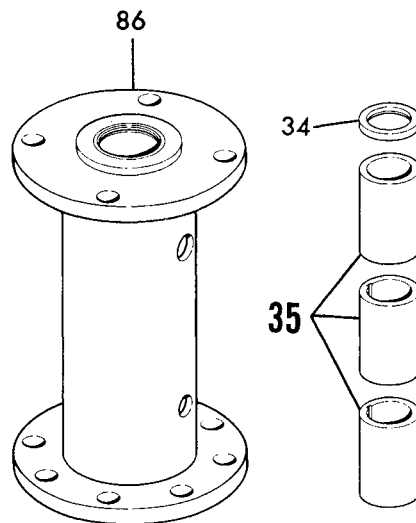
*Standard for pump settings over 10 feet.

OPTIONAL SPOOL TYPE BEARINGS

CUTLESS RUBBER



METAL BUSHING



640 SERIES
 MODELS 641-642
 2x2x7-3x3x7-2x2x9-3x3x9

SECTION **640P** PAGE **5**
 DATED JUNE 1994
 SUPERSEDES PAGE 1
 DATED NOVEMBER 1988

PARTS LIST

PC NO.	DESCRIPTION	QTY	PART NO.	MATERIAL				PC NO.	DESCRIPTION	QTY	PART NO.	MATERIAL					
				B.F.	A.B.	A.I.	S.S.					B.F.	A.B.	A.I.	S.S.		
1	CAPSCREW 2x7,3x7		NOT REQUIRED	RED				18	NUT 2x7, 2x9		NOT REQUIRED	RED					
	2x9,3x9	8	168-0489	080	190	080	104			2	544-0113	080	190	080	104		
	SEMI-OPEN 2x9,3x9	8	168-0487	080	190	080	104			2	544-0109	080	190	080	104		
2	ROD GUIDE	1	396-0010	087	190	087	104	19	CAPSCREW 2x7,2x9		NOT REQUIRED	RED					
3	SUCTION COVER							3x7	3x7	2	168-0494	080	190	080	104		
	2x7,3x7		NOT REQUIRED	RED						2	168-0390	080	190	080	104		
	2x9	1	816-1185	010	208	010	104			20	NUT	4	544-0115	080	190	080	104
	SEMI-OPEN							21	BOLT 2x7,2x9	4	100-0507	087	190	087	104		
	3x9	1	816-0652	010	208	010	104		3x7,3x9	4	100-0511	087	190	087	104		
5	BOLT 2x7,2x9		NOT REQUIRED	RED				22	COVER 2x7,3x7	1	260-0012	010	208	010	104		
	3x7	4	168-0568	087	190	087	104			1	260-0013	010	208	010	104		
	3x9	4	100-0511	087	190	087	104			23	GASKET		364-1021	588	588	588	588
6	NUT 2x7,2x9		NOT REQUIRED	RED				24	GASKET 2x7,2x9		NOT REQUIRED	RED					
	3x7,3x9	4	544-0115	080	190	080	104			1	364-1041	453	453	453	453		
										25	WASHER 2x7,2x9		NOT REQUIRED	RED			
7	CAPSCREW 2x7,3x7	8	168-0377	080	190	080	104	26	PUMP BEARING	1	136-1405	208	208	010			
	2x9,3x9	8	168-0487	080	190	080	104			27	BEARING HOUSING	1	260-0701	087	208	087	104
											OPTIONAL RELIEF TYPE BEARINGS-COMplete ASSY.						
											BEFORE MARCH 1986						
8	CASING 2x7	1	180-0633	010	208	010	104	27A	CUTLESS RUBBER	1	032-0679	NOT AVAILABLE					
	2x9	1	180-1862	010	208	010	104	27B	METAL BUSHING	1	032-0681	USE NEW DESIGN					
	3x7	1	180-0427	010	208	010	104	29	LANTERN RING	2	676-1680	512	512	512	512		
	3x9	1	180-0632	010	208	010	104	30	SNAP RING	1	676-0220	088	104	088	104		
9	GASKET 2x7,2x9		NOT REQUIRED	RED				31	RETAINING RING	1	676-1996	079	190	079	104		
	3x7,3x9	1	364-1021	588	588	588	588	32	BUSHING	2	136-1378	457	457	457	457		
10	GASKET 2x7,3x7	1	364-1014	603	603	603	603	33	BUSHING	1	136-1173	208	208	010	104		
	2x9,3x9	2	364-1015	603	603	603	603	34	SEAL	1	712-0069	653	653	653			
12	PLUG	3	600-0002	087	190	087	104	35	BUSHING	3	136-1173	208	208	010			
13	IMPELLER NUT	1	544-0039	104	104	104	104										
15	ENCLOSED IMPELLER 2x7	1	443-1871	010	208	010	104										
	2x9	1	443-2221	010	208	010	104										
	3x7	1	443-2290	010	208	010	104										
	SEMI-OPEN 3x9	1	443-1873	010	208	010	104										
16	IMPELLER KEY	1	472-0010	087	104	087	104										
	H.H.COVER 2x7,2x9		NOT REQUIRED	RED				27A	CUTLESS RUBBER	1	032-1423	644	643	642	646		
	3x7	1	260-0098	010	208	010	104	27B	METAL BUSHING	1	032-1427	644	643	642			
	3x9	1	260-0101	010	208	010	104	32	BUSHING	2	136-1616	486	486	486	486		
17								33	BUSHING	1	136-1173	208	208	010	104		
								35	BUSHING	3	136-1173	208	208	010			
								38	NUT	4	544-0115	080	190	080	104		
								39	CAPSCREW	4	168-0564	080	190	080	104		
								40	SUPPORT PIPE		REFER TO FACTORY						
								41	GUIDE BEARING		136-1405	208	208	010			

