

630 SERIES REPAIR PARTS INDEX

SECTION **630P** PAGE **1**
DATED AUGUST 1992
SUPERSEDES PAGE 1
DATED NOVEMBER 1988

PARTS LISTED ARE FOR STANDARD PUMPS AND SOME OPTIONAL PUMP BEARINGS.

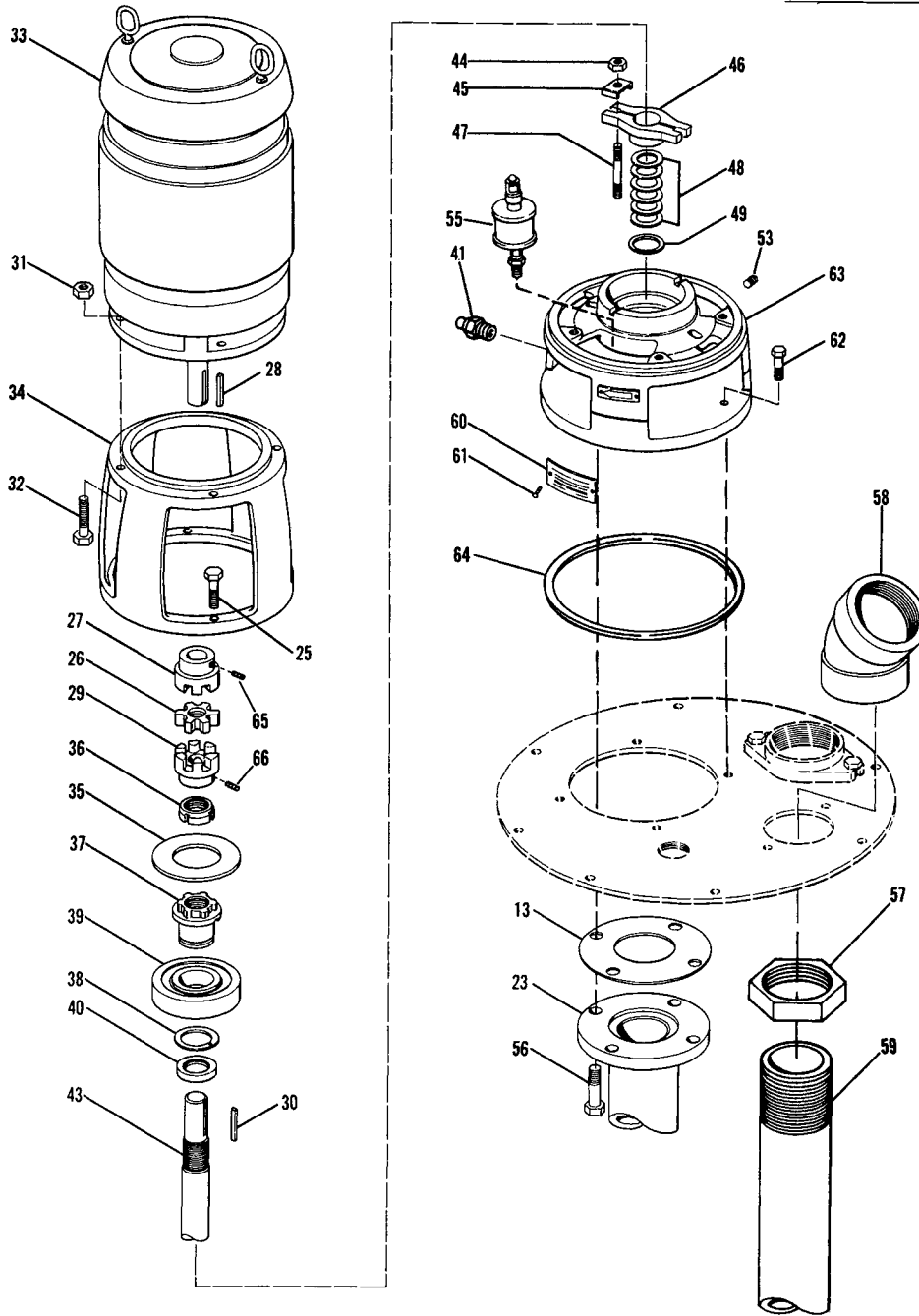
PUMP SIZE	PAGE
4X4X7 4X4X9 4X4X12 6X6X12	4-5

PIECE NO.

- 1 – A ROD GUIDE IS REQUIRED ON ALL REPLACEMENT COVERS.
- 17 – STANDARD PUMP BEARING IS LISTED. REFER TO PART NUMBERS 70 THRU 130 FOR SPECIAL OPTION BEARINGS. ALL PUMPS FOR 10'-0" PIT DEPTH AND DEEPER ARE MADE WITH RELIEF TYPE PUMP BEARING.
- 22 – ONE SET OF FOUR (4) CPASCREWS AND NUTS IS REQUIRED FOR EACH GUIDE BEARING JOINT.
- 23 – ONE SUPPORT PIPE IS REQUIRED FOR PIT DEPTHS UP TO 6'-0".
TWO SUPPORT PIPES ARE REQUIRED FOR PIT DEPTHS 6'-6" TO 11'-0".
THREE SUPPORT PIPES ARE REQUIRED FOR PIT DEPTHS 11'-6" TO 16'-0".
- 24 – ONE GUIDE BEARING IS REQUIRED FOR PIT DEPTHS 6'-6" TO 11'-0".
TWO GUIDE BEARINGS ARE REQUIRED FOR PIT DEPTHS 11'-6" TO 16'-0".
- 42 & 43 – PIT DEPTHS TO 11'-6" REQUIRE ONE SHAFT (43).
PIT DEPTHS 12'-0" TO 17'-6" REQUIRE ONE PUMP SHAFT (43C), ONE HEAD SHAFT (43A) AND ONE LINE COUPLING (42).

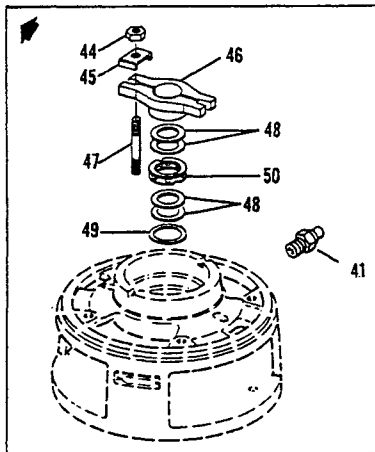
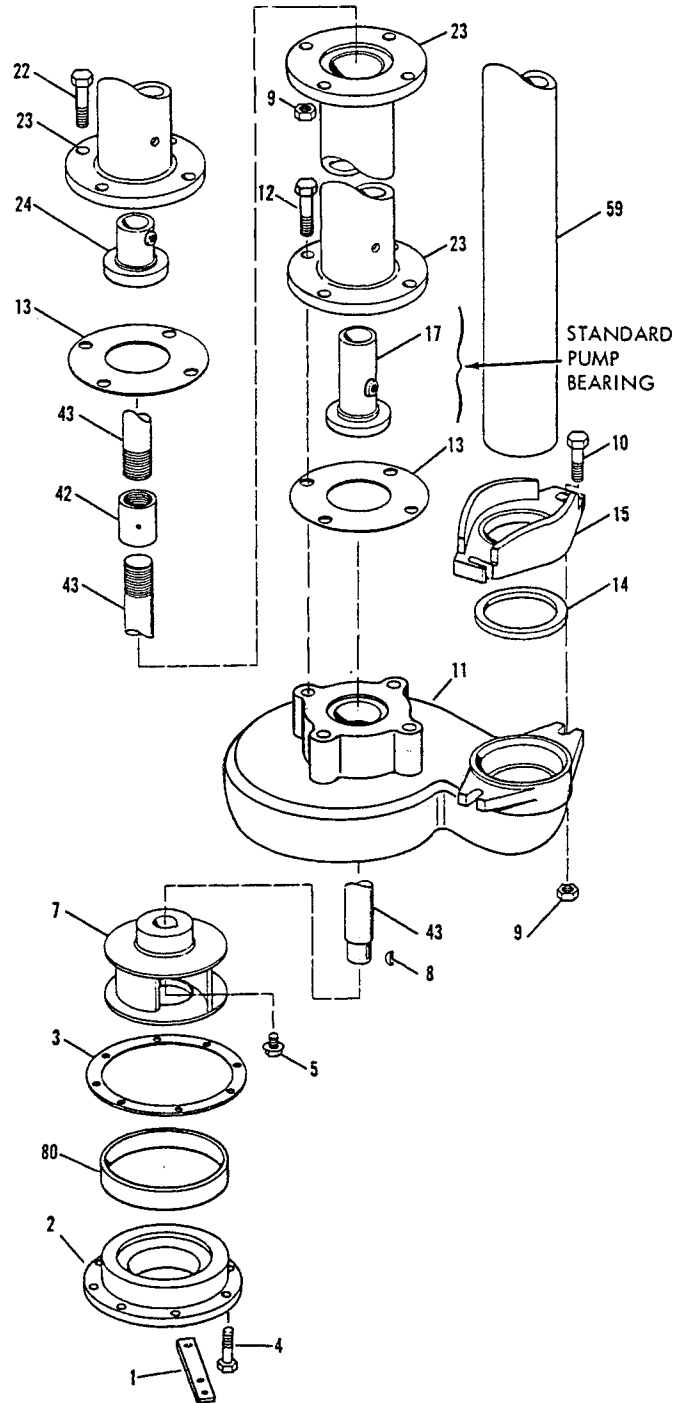
630 SERIES MODEL 631-632 PIECE NUMBERS

STANDARD
STUFFING BOX
ILLUSTRATED



630 SERIES
MODEL 631-632
PIECE NUMBERS

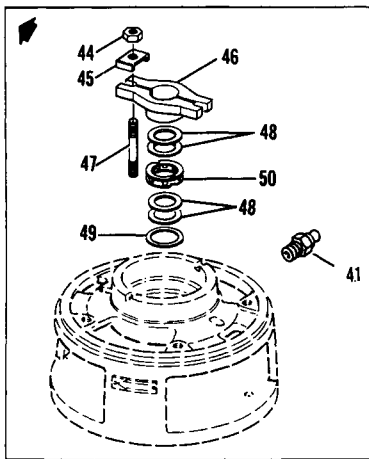
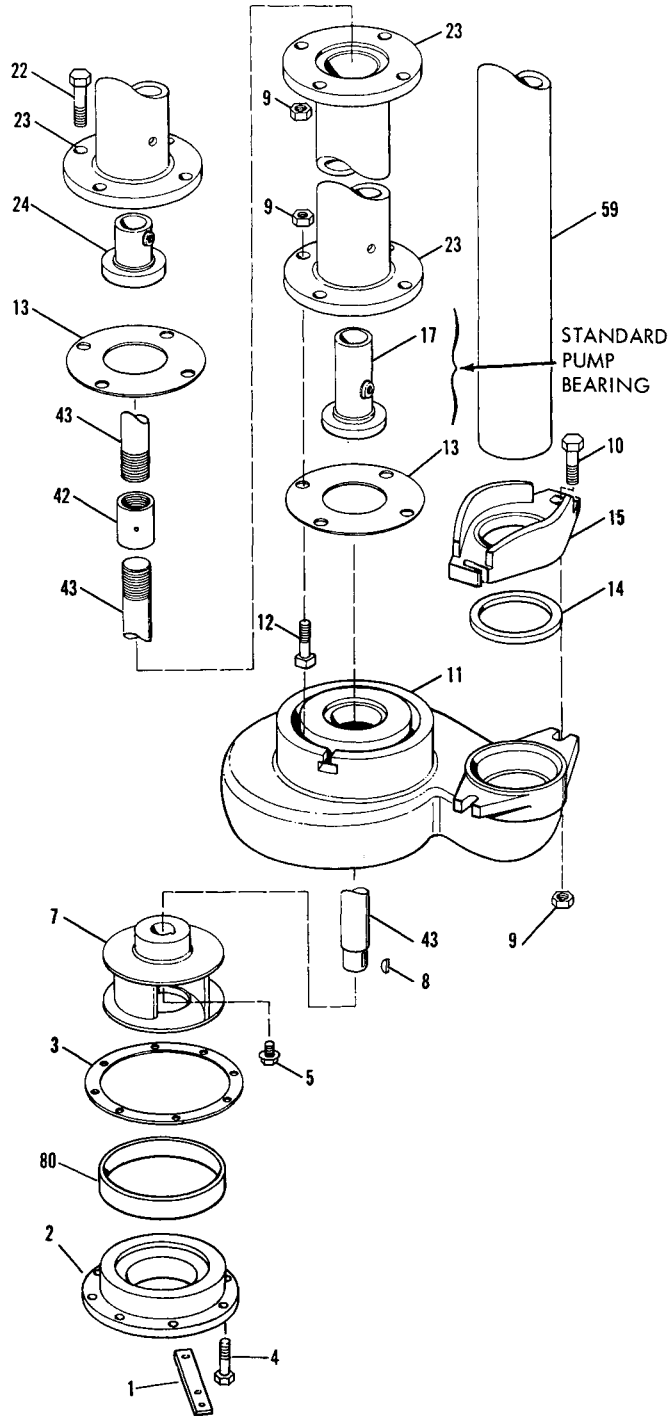
4x4x7 & 4x4x9



PACKING WITH LANTERN RING (OPTIONAL)

630 SERIES MODEL 631-632 PIECE NUMBERS

4x4x12 & 6x6x12



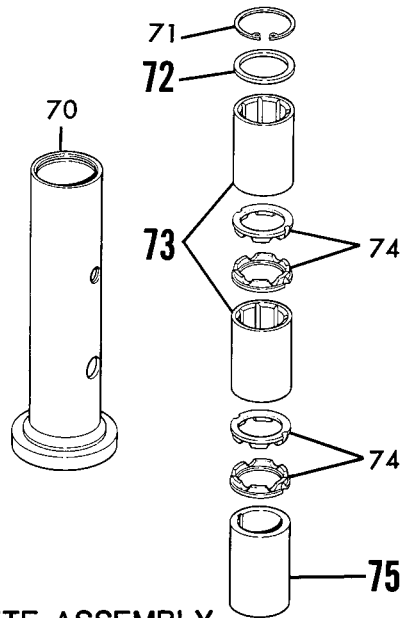
PACKING WITH LANTERN RING (OPTIONAL)

**630 SERIES
MODEL 631-632
PIECE NUMBERS**

SECTION 630P PAGE 5
DATED AUGUST 1992

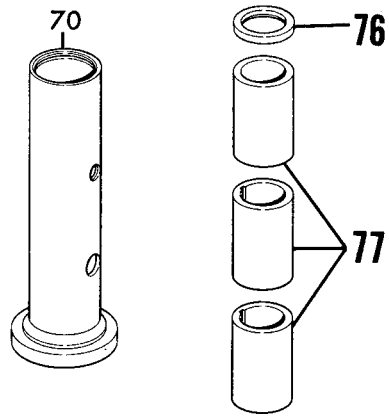
OPTIONAL RELIEF TYPE BEARINGS

CUTLESS RUBBER



70A-COMPLETE ASSEMBLY

METAL BUSHING*

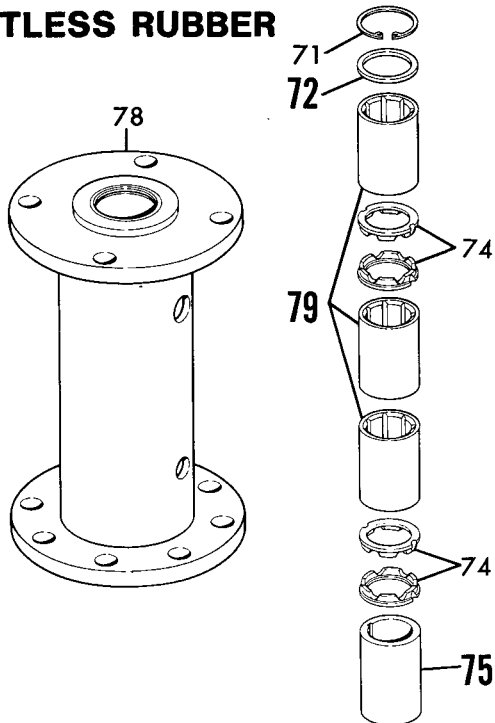


70B-COMPLETE ASSEMBLY

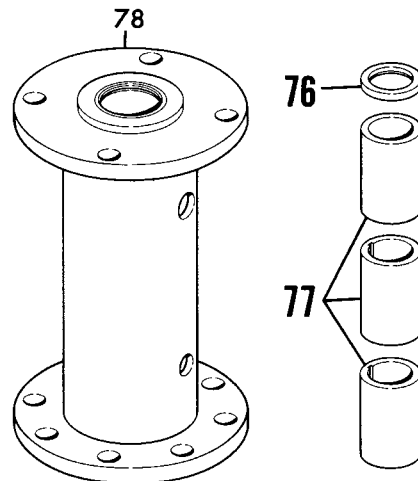
*Standard for pump settings over 10 feet.

OPTIONAL SPOOL TYPE BEARINGS

CUTLESS RUBBER



METAL BUSHING



630 SERIES
MODELS 631-632
4x4x7-4x4x9-4x4x12-6x6x12

PARTS LIST

PC. NO.	DESCRIPTION	QTY	PART NO.	MATERIAL				
				B.F.	A.B.	A.I.	S.S.	
1	ROD GUIDE	1	396-0009	087	190	087	104	
2	SUCTION COVER							
	4x7	1	816-0716	010	208	010	104	
	4x9	1	816-0717	010	208	010	104	
	4x12	1	816-0718	010	208	010	104	
	6x12	1	816-0719	010	208	010	104	
	FOR PUMPS WITH SEMI-OPEN IMPELLER							
	4x9	1	816-0653	010	208	010	104	
	6x12	1	816-0655	010	208	010	104	
3	GASKET	4x7	1	364-1014	603	603	603	
		4x9	1	364-1015	603	603	603	
		4x12, 6x12	1	364-1016	603	603	603	
4	CAPSCREW	4x7	8	168-0377	080	109	080	
		4x9, 4x12, 6x12	8	168-0489	080	190	080	
5	IMPELLER NUT		1	544-2047	104	104	104	
6	WASHER		INCLUDED WITH NO. 5					
7	IMPELLER	4x7	1	443-0703	010	208	010	
		4x9	1	443-0662	010	208	010	
		4x12	1	443-1080	010	208	010	
		6x12	1	443-0705	010	208	010	
		SEMI-OPEN	4x9	1	443-0612	010	208	010
			6x12	1	443-0614	010	208	010
8	IMPELLER KEY		1	472-0018	087	104	087	
9	NUT	4x4x7, 4x4x9	2	544-0115	080	190	080	
9	NUT	4x4x12, 6x6x12	10	544-0115	080	190	080	
10	BOLT		2	100-0515	080	190	080	
11	CASING	4x7	1	180-2403	010	208	010	
		4x9	1	180-2404	010	208	010	
		4x12	1	180-0394	010	208	010	
		6x12	1	180-0380	010	208	010	
12	CAPSCREW							
		4x4x7, 4x4x9	4	168-0562	082	190	082	
12	BOLT	4x4x12, 6x6x12	8	100-0511	080	190	080	
13	GASKET			364-1021	588	588	588	
14	PACKING							
		4x7, 4x9, 4x12	1	564-0346	730	730	730	
		6x12	1	564-0347	802	802	802	
15	GLAND							
		4x7, 4x9, 4x12	1	372-0071	010	208	010	
		6x12	1	372-0074	010	208	010	
17	PUMP BEARING		1	136-1402	208	208	010	
22	CAPSCREW		4	168-0562	087	190	087	
23	SUPPORT PIPE		REFER TO FACTORY					
24	GUIDE BEARING			136-1402	208	208	010	

PC. NO.	DESCRIPTION	QTY	PART NO.	MATERIAL			
				B.F.	A.B.	A.I.	S.S.
25	CAPSCREW	4	168-0490	080	080	080	104
26	COUPLING INSERT		REFER TO SECTION 1000P				
27	COUPLING HALF		REFER TO SECTION 1000P				
28	COUPLING KEY		REFER TO FACTORY				
29	COUPLING HALF		REFER TO SECTION 1000P				
30	COUPLING KEY	1	472-0250	087	087	087	087
31	NUT		REFER TO FACTORY				
32	CAPSCREW		REFER TO FACTORY				
33	MOTOR		REFER TO FACTORY				
34	UPPER HEAD						
	143HP-256HP	1	116-0346	010	010	010	010
	284HPH-326HP	1	116-0347	010	010	010	010
35	SLINGER	1	764-0401	478	478	478	478
36	LOCKNUT	1	544-1108	080	080	080	080
37	BEARING COLLAR	1	224-0163	208	208	208	208
38	RETAINING RING	1	676-0289	088	088	088	088
39	BALL BEARING	1	068-2023	647	647	647	647
40	GREASE SEAL	1	712-0146	653	653	653	653
41	GREASE FITTING	1	508-0002	651	651	651	651
42	COUPLING	1	256-2014	062	104	062	104
43	SHAFT		REFER TO FACTORY				
43A	HEAD SHAFT		REFER TO FACTORY				
43B	LINE SHAFT		REFER TO FACTORY				
43C	PUMP SHAFT		REFER TO FACTORY				
44	NUT	2	544-0109	190	190	190	104
45	GLAND CLAMP	2	204-0120	360	190	360	104
46	GLAND	1	372-0220	010	208	010	104
47	STUD	2	808-0017	082	082	082	104
48	PACKING	6	564-0037	802	802	802	802
49	PACKING RING	1	676-1232	190	190	087	104
50	LANTERN RING	1	676-1681	512	512	512	512
53	PLUG	1	600-0002	087	190	087	104
55	OILER	1	552-0102	652	652	652	652
56	CAPSCREW	4	168-0562	080	080	080	080
57	LOCKNUT						
	4x7, 4x9, 4x12	1	544-2037	087	190	087	104
	6x12	1	544-2039	087	190	087	104
58	ELBOW						
	4x7, 4x9, 4x12	1	600-0365	028	190	028	104
	6x12	1	600-0367	028	190	028	104
59	DISCHARGE PIPE		REFER TO FACTORY				
60	NAMEPLATE	1	532-0045	114	114	114	114
61	DRIVE SCREW	2	708-0013	365	365	365	365
62	CAPSCREW	4	168-0388	080	080	080	080

