

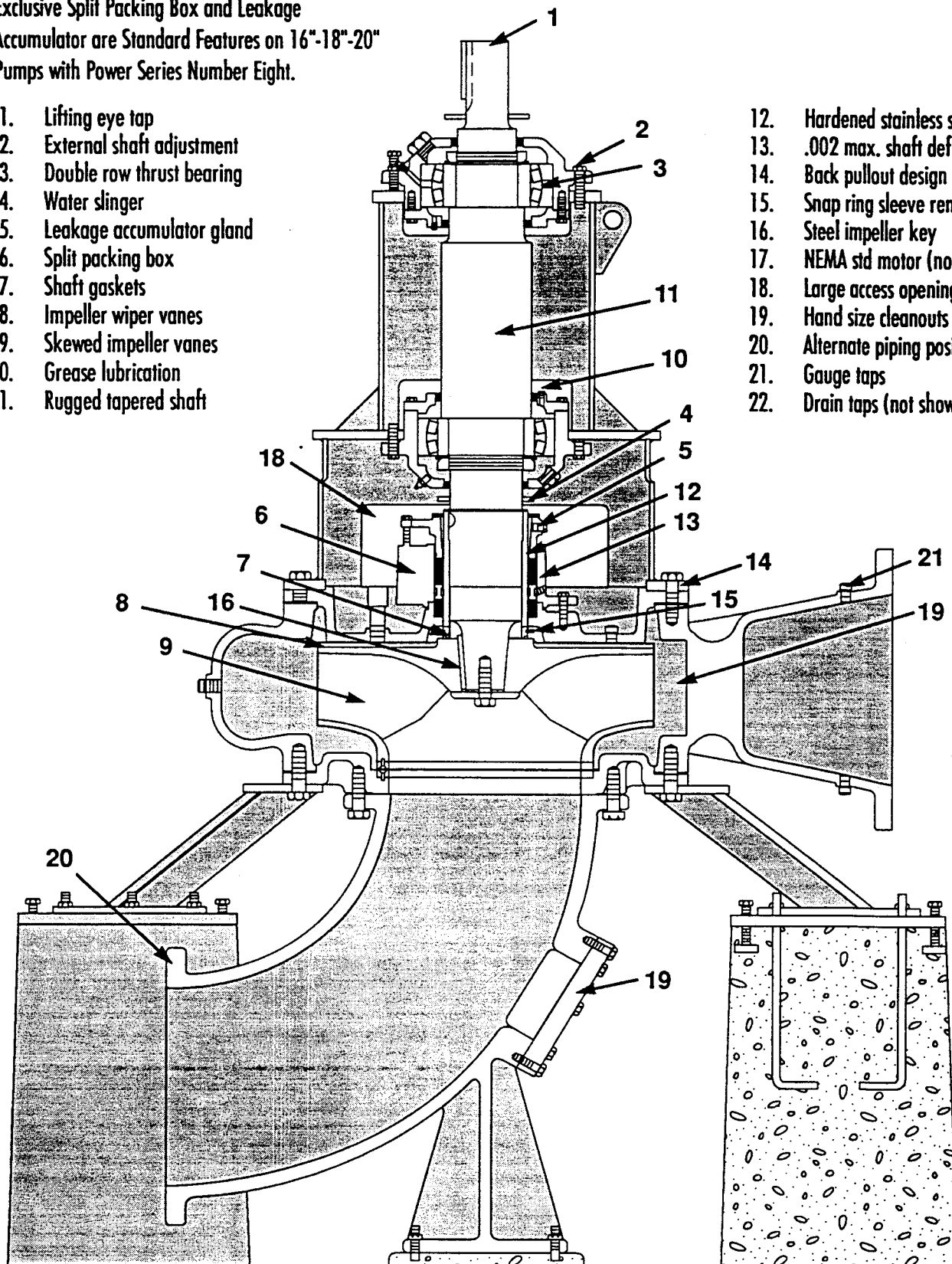
# PUMP FEATURES MODEL 612A 16"-18"-20" PUMPS

Section 610 Page 0  
Dated AUGUST 1993  
SUPERSEDES Section 610 Page 0  
Dated NOVEMBER 1988

Exclusive Split Packing Box and Leakage Accumulator are Standard Features on 16"-18"-20" Pumps with Power Series Number Eight.

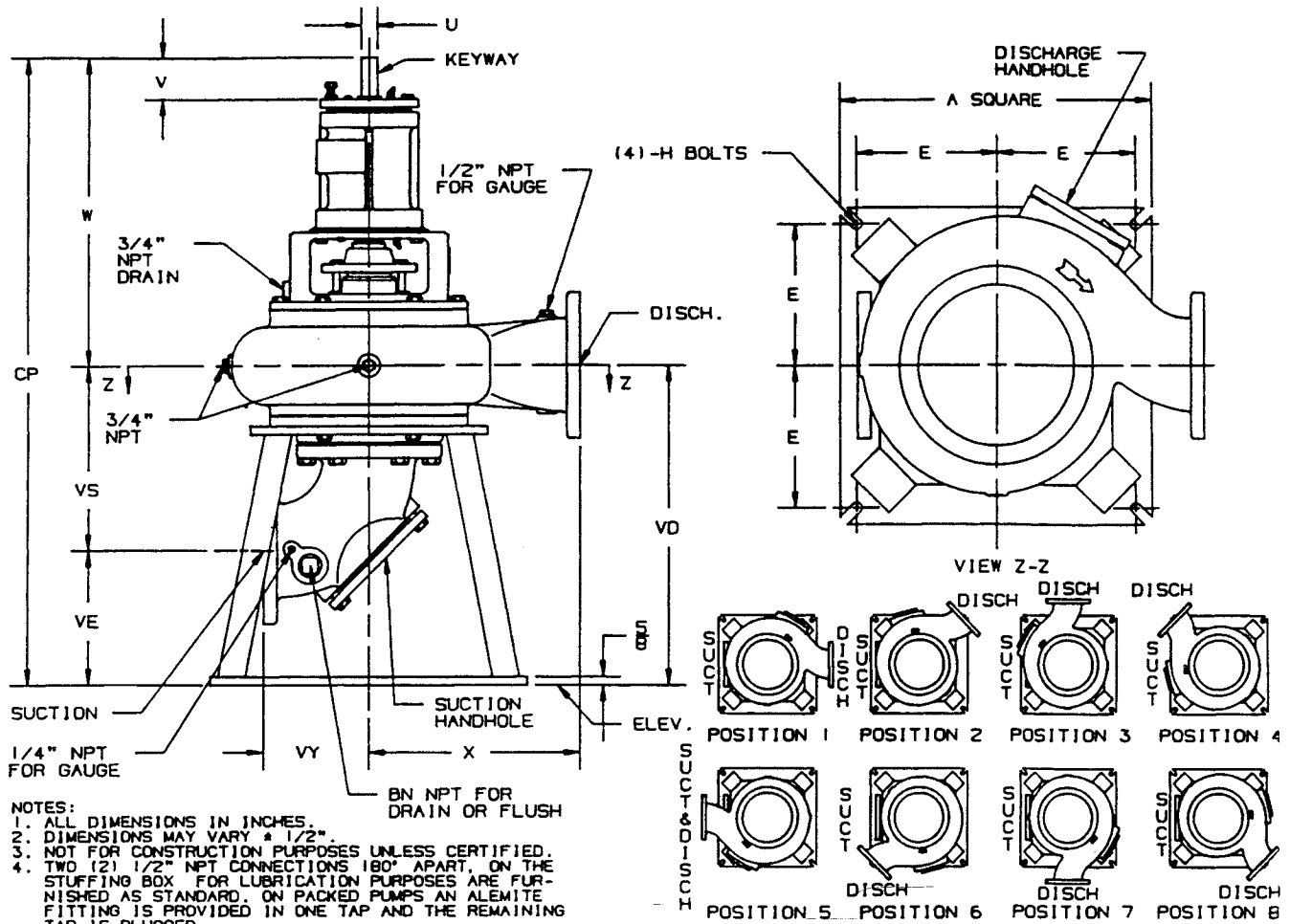
1. Lifting eye tap
2. External shaft adjustment
3. Double row thrust bearing
4. Water slinger
5. Leakage accumulator gland
6. Split packing box
7. Shaft gaskets
8. Impeller wiper vanes
9. Skewed impeller vanes
10. Grease lubrication
11. Rugged tapered shaft

12. Hardened stainless steel sleeve
13. .002 max. shaft deflection
14. Back pullout design
15. Snap ring sleeve removal
16. Steel impeller key
17. NEMA std motor (not shown)
18. Large access openings
19. Hand size cleanouts
20. Alternate piping positions
21. Gauge taps
22. Drain taps (not shown)

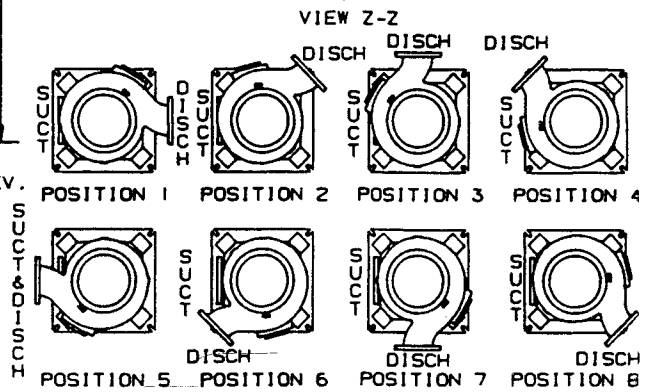


# AURORA MODEL 612A PUMP 6", 8", 10", 12" & 14" PUMPS

SECTION 610 PAGE 203  
DATED OCTOBER 1992  
SUPERSEDES PAGE 203  
DATED NOVEMBER 1988



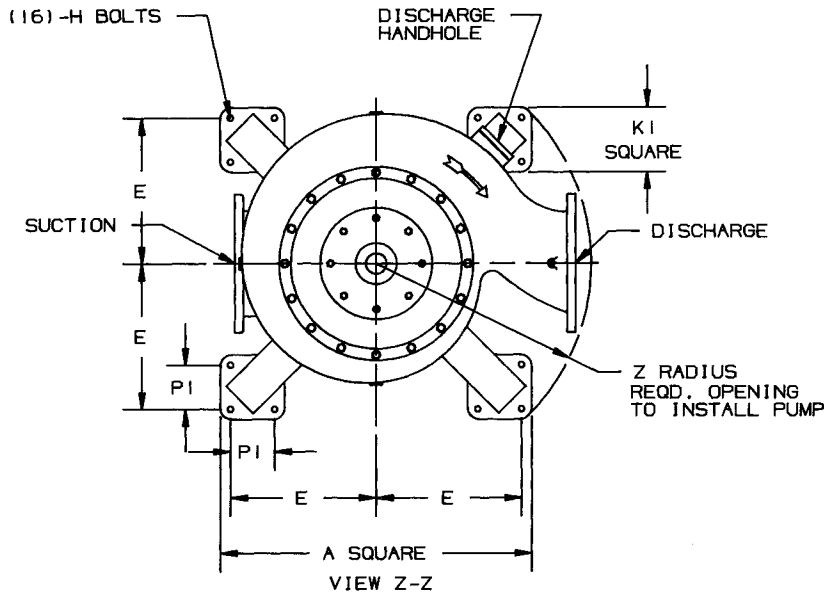
- NOTES:
1. ALL DIMENSIONS IN INCHES.
  2. DIMENSIONS MAY VARY ± 1/2"
  3. NOT FOR CONSTRUCTION PURPOSES UNLESS CERTIFIED.
  4. TWO (2) 1/2" NPT CONNECTIONS 180° APART, ON THE STUFFING BOX FOR LUBRICATION PURPOSES ARE FURNISHED AS STANDARD. ON PACKED PUMPS AN ALEMITE FITTING IS PROVIDED IN ONE TAP AND THE REMAINING TAP IS PLUGGED.
  5. DISCHARGE POSITION 1 IS FURNISHED AS STANDARD UNLESS SPECIFIED.
  6. SUCTION AND DISCHARGE FLANGES ARE AMERICAN STANDARD 125 LBS.



DISCHARGE POSITIONS AVAILABLE (VIEW Z-Z)

POWER FRAME	U	V	KEYWAY		
			LENGTH	WIDTH	DEPTH
4C, 4D	1 1/4	3 3/16	2	1/4	1/8
5E, 5F 5G, 5H	2 3/8	6 3/8	4	5/8	5/16
6D	2 7/8	6 5/8	5	3/4	3/8
6E	2 7/8	5 3/4	4	3/4	3/8

DISCH SUCT CASE BORE	POWER FRAME	A	BN	E	H	VY	W	X	CP	VD	VE	VS	HANDHOLE	
													DISCH.	SUCT.
6x6x12	4C, 4D	24	1 1/2	10 3/4	5/8	8	23 5/16	14	47 9/16	24 1/4	10 1/8	14 1/8	5x5	6
6x6x12	5E, 5F	24	1 1/2	10 3/4	5/8	8	34 3/16	14	58 7/16	24 1/4	10 1/8	14 1/8	5x5	6
6x6x12B	4C, 4D	24	1 1/2	10 3/4	5/8	8	23 7/16	16	47 9/16	24 1/8	10 1/8	14	5x5	6
6x6x12B	5E, 5F	24	1 1/2	10 3/4	5/8	8	34 5/16	16	58 7/16	24 1/8	10 1/8	14	5x5	6
6x8x15	5E, 5F	30	1 1/2	13 3/4	3/4	9	33 3/4	16	65 7/8	32 1/8	17	15 1/8	5x5	6
6x8x15	5E, 5F	30	1 1/2	13 3/4	3/4	9	34 1/16	18	66 7/16	32 3/8	17	15 3/8	5x5	6
8x8x15A	5E	30	1 1/2	13 3/4	3/4	9	34 1/8	19	66 1/2	32 3/8	14 1/4	18 1/8	5x7	6
8x10x18	5G, 5H	30	1 1/2	13 3/4	3/4	11	34 5/8	19	67 5/8	33	15 3/16	17 13/16	5x7	6
8x10x22	5G, 5H	37	1 1/2	17	7/8	11	34 5/8	22	69 1/8	34 1/2	16 5/8	17 7/8	5x7	6
10x10x15	5E, 5F	30	1 1/2	13 3/4	3/4	11	34 13/16	20	67 3/4	32 15/16	11 7/8	21 1/16	5x7	6
10x10x22	6E	37	1 1/2	17	7/8	11	37 1/8	22 1/2	71 5/8	34 1/2	16 5/8	17 7/8	5x7	6
10x12x22	5G, 5H	37	1 1/2	17	7/8	12	35 1/16	22 1/2	70 3/16	35 1/8	15 9/16	19 9/16	5x7	8
10x12x22	6D	37	1 1/2	17	7/8	12	37 9/16	22 1/2	72 11/16	35 1/8	15 9/16	19 9/16	5x7	8
12x12x22	6E	37	1 1/2	17	7/8	12	37 5/8	22 1/2	72 3/4	35 1/8	15 9/16	19 9/16	5x7	8
12x14x22A	5G, 5H	37	2 1/2	17	7/8	14	35 1/8	24	70 1/4	35 1/8	13 7/8	21 1/4	5x7	8
12x14x22A	6D	37	2 1/2	17	7/8	14	37 5/8	24	72 3/4	35 1/8	13 7/8	21 1/4	5x7	8
12x14x22B	5G, 5H	37	2 1/2	17	7/8	14	35 1/8	24	70 1/4	35 1/8	13 7/8	21 1/4	5x7	8
12x14x22B	6D	37	2 1/2	17	7/8	14	37 5/8	24	72 3/4	35 1/8	13 7/8	21 1/4	5x7	8
14x14x22A	6E	37	2 1/2	17	7/8	14	37 5/8	24	72 3/4	35 1/8	13 7/8	21 1/4	5x7	8

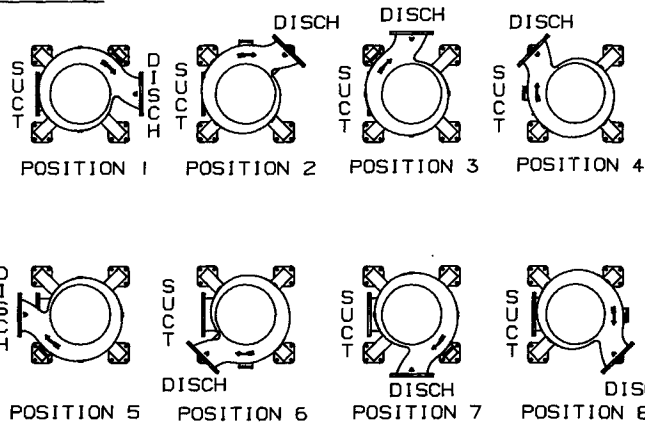
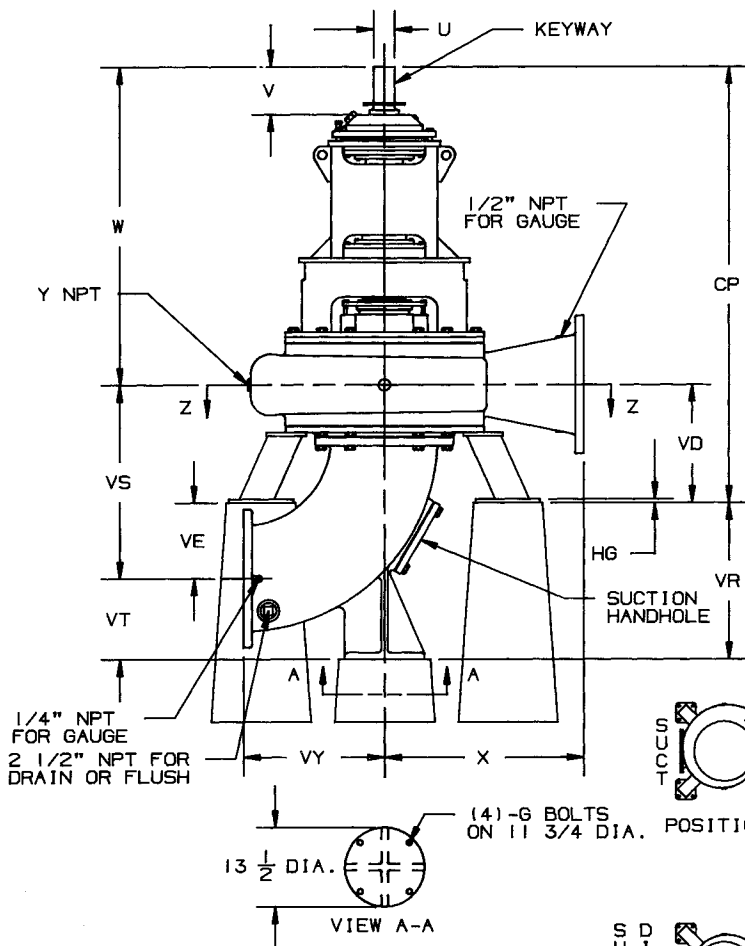


CASE BORE	16x16x28	18x18x28	20x20x28
SUCT.			
DISCH.	16x16x28	18x18x28	20x20x28
POWER FRAME	8	8	8
A	53	53	53
E	24 3/4	24 3/4	24 3/4
G	3/4	3/4	3/4
H	7/8	7/8	7/8
KI	11	11	11
PI	7 1/2	7 1/2	7 1/2
W	54 3/8	55 1/8	55 5/8
X	34	37	42
Y	3/4	1	1
Z	36	38	44 1/4
CP	74 1/2	78	77 11/16
HG	5/8	5/8	5/8
VD	20 1/8	22 7/8	22 1/16
VE	12 15/16	14 1/8	21 15/16
VR	26 11/16	29 1/8	37 15/16
VS	33 1/16	37	44
VT	13 3/4	15	16
VY	24	26 1/2	29
HANDHOLE DISCH.	6	6	6
HANDHOLE SUCT.	8	8	8

U	V	KEYWAY		
		LENGTH	WIDTH	DEPTH
3 1/2	6 1/2	4 3/4	7/8	7/16

**NOTES:**

1. ALL DIMENSIONS IN INCHES.
2. DIMENSIONS MAY VARY ± 1/2".
3. NOT FOR CONSTRUCTION PURPOSES UNLESS CERTIFIED.
4. TWO (2) 1/2" NPT CONNECTIONS 180° APART, ON THE STUFFING BOX FOR LUBRICATION PURPOSES ARE FURNISHED AS STANDARD. ON PACKED PUMPS AN ALEMITE FITTING IS PROVIDED IN ONE TAP AND THE REMAINING TAP IS PLUGGED.
5. DISCHARGE POSITION 1 IS FURNISHED AS STANDARD UNLESS SPECIFIED.
6. SUCTION AND DISCHARGE FLANGES ARE AMERICAN STANDARD 125 LBS.



VIEW Z-Z





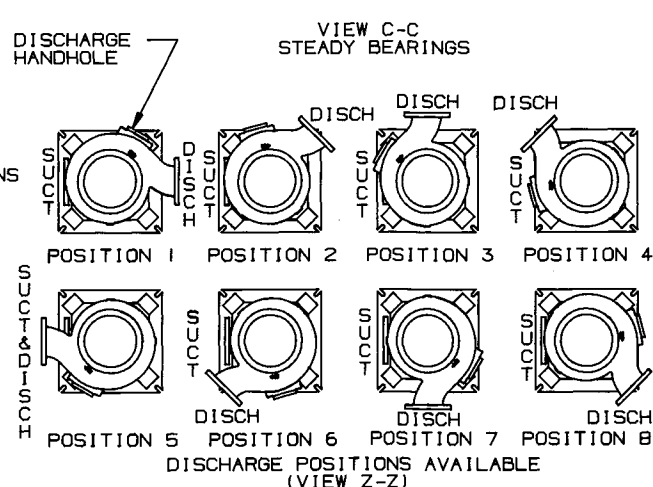
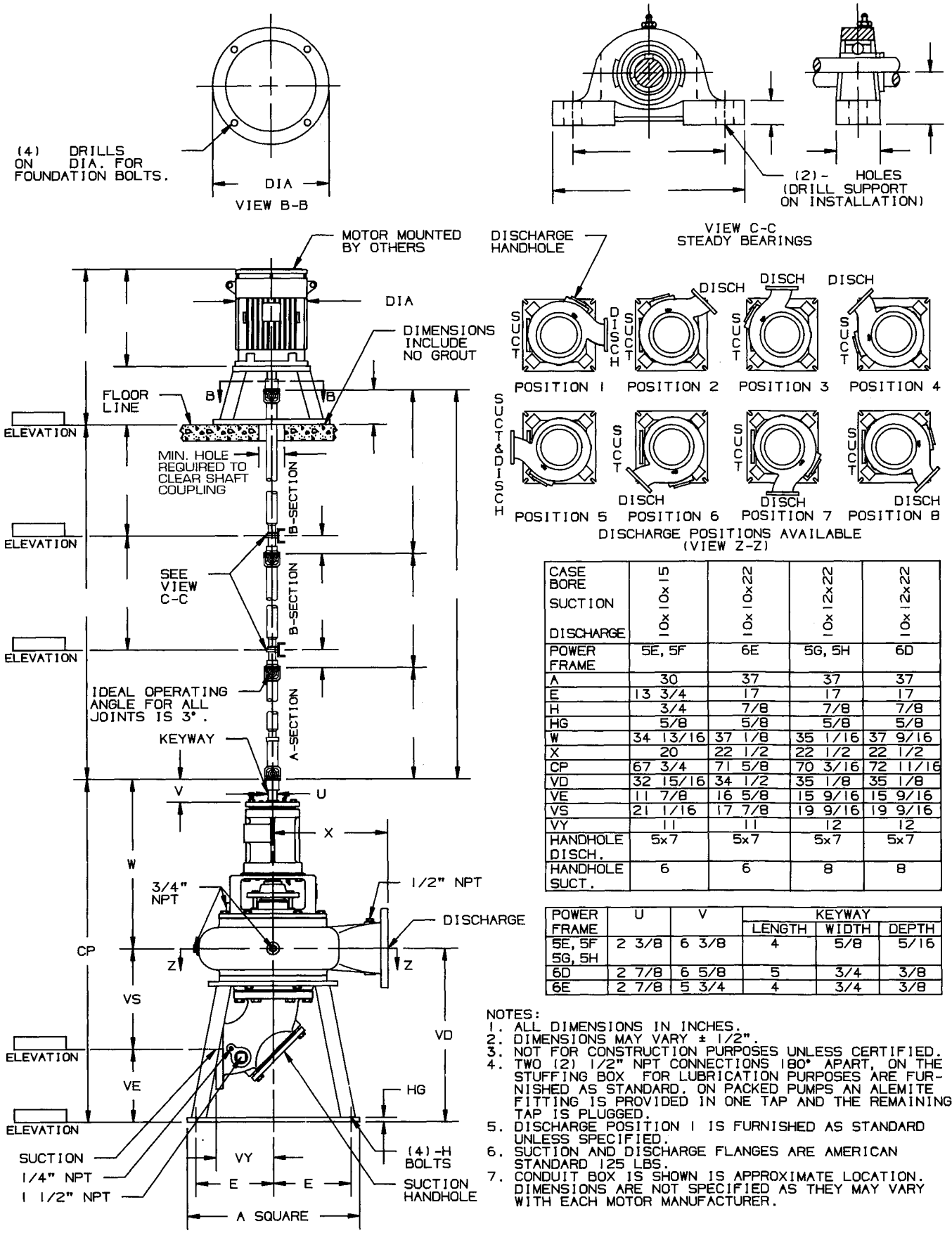
# AURORA MODEL 612A PUMP

## 10" PUMPS FLEXIBLE SHAFT

DATED MAY 1996

SUPERSEDES PAGE 207

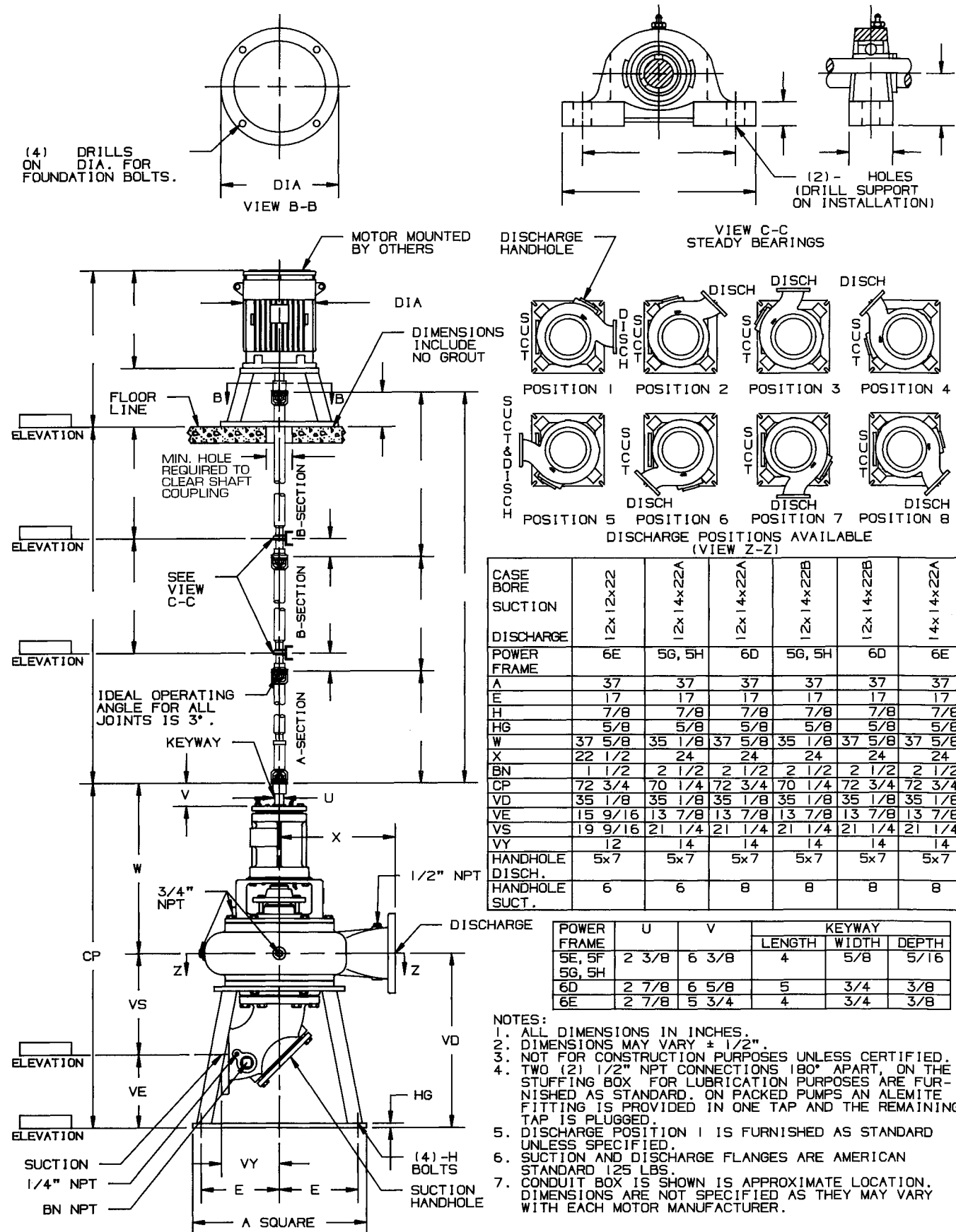
DATED NOVEMBER 1988



CASE BORE	15	22	22	22
SUCTION	10x10	10x22	10x12	10x22
DISCHARGE	10x10	10x22	10x12	10x22
POWER FRAME	5E, 5F	6E	5G, 5H	6D
A	30	37	37	37
E	13 3/4	17	17	17
H	3/4	7/8	7/8	7/8
HG	5/8	5/8	5/8	5/8
W	34 13/16	37 1/8	35 1/16	37 9/16
X	20	22 1/2	22 1/2	22 1/2
CP	67 3/4	71 5/8	70 3/16	72 11/16
VD	32 15/16	34 1/2	35 1/8	35 1/8
VE	11 7/8	16 5/8	15 9/16	15 9/16
VS	21 1/16	17 7/8	19 9/16	19 9/16
VY	11	11	12	12
HANDHOLE DISCH.	5x7	5x7	5x7	5x7
HANDHOLE SUCT.	6	6	8	8

POWER FRAME	U	V	KEYWAY		
			LENGTH	WIDTH	DEPTH
5E, 5F	2 3/8	6 3/8	4	5/8	5/16
5G, 5H	2 7/8	6 5/8	5	3/4	3/8
6E	2 7/8	5 3/4	4	3/4	3/8

- NOTES:
1. ALL DIMENSIONS IN INCHES.
  2. DIMENSIONS MAY VARY ± 1/2".
  3. NOT FOR CONSTRUCTION PURPOSES UNLESS CERTIFIED.
  4. TWO (2) 1/2" NPT CONNECTIONS 180° APART, ON THE STUFFING BOX FOR LUBRICATION PURPOSES ARE FURNISHED AS STANDARD. ON PACKED PUMPS AN ALEMITE FITTING IS PROVIDED IN ONE TAP AND THE REMAINING TAP IS PLUGGED.
  5. DISCHARGE POSITION 1 IS FURNISHED AS STANDARD UNLESS SPECIFIED.
  6. SUCTION AND DISCHARGE FLANGES ARE AMERICAN STANDARD 125 LBS.
  7. CONDUIT BOX IS SHOWN IS APPROXIMATE LOCATION. DIMENSIONS ARE NOT SPECIFIED AS THEY MAY VARY WITH EACH MOTOR MANUFACTURER.

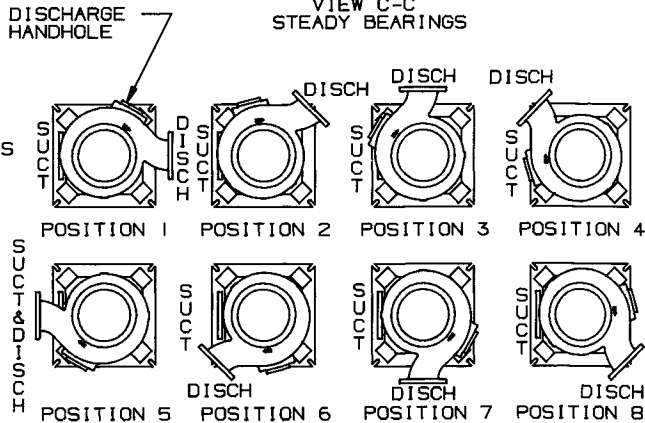


(4) DRILLS ON DIA. FOR FOUNDATION BOLTS.

DIA  
VIEW B-B

(2) HOLES (DRILL SUPPORT ON INSTALLATION)

VIEW C-C STEADY BEARINGS



DISCHARGE POSITIONS AVAILABLE (VIEW Z-Z)

CASE BORE	12x12x22	12x14x22A	12x14x22A	12x14x22B	12x14x22B	14x14x22A
SUCTION						
DISCHARGE	12x	12x	12x	12x	12x	14x
POWER FRAME	6E	5G, 5H	6D	5G, 5H	6D	6E
A	37	37	37	37	37	37
E	17	17	17	17	17	17
H	7/8	7/8	7/8	7/8	7/8	7/8
HG	5/8	5/8	5/8	5/8	5/8	5/8
W	37 5/8	35 1/8	37 5/8	35 1/8	37 5/8	37 5/8
X	22 1/2	24	24	24	24	24
BN	1 1/2	2 1/2	2 1/2	2 1/2	2 1/2	2 1/2
CP	72 3/4	70 1/4	72 3/4	70 1/4	72 3/4	72 3/4
VD	35 1/8	35 1/8	35 1/8	35 1/8	35 1/8	35 1/8
VE	15 9/16	13 7/8	13 7/8	13 7/8	13 7/8	13 7/8
VS	19 9/16	21 1/4	21 1/4	21 1/4	21 1/4	21 1/4
VY	12	14	14	14	14	14
HANDHOLE DISCH.	5x7	5x7	5x7	5x7	5x7	5x7
HANDHOLE SUCT.	6	6	8	8	8	8

POWER FRAME	U	V	KEYWAY		
			LENGTH	WIDTH	DEPTH
5E, 5F	2 3/8	6 3/8	4	5/8	5/16
5G, 5H					
6D	2 7/8	6 5/8	5	3/4	3/8
6E	2 7/8	5 3/4	4	3/4	3/8

- NOTES:
1. ALL DIMENSIONS IN INCHES.
  2. DIMENSIONS MAY VARY ± 1/2".
  3. NOT FOR CONSTRUCTION PURPOSES UNLESS CERTIFIED.
  4. TWO (2) 1/2" NPT CONNECTIONS 180° APART, ON THE STUFFING BOX FOR LUBRICATION PURPOSES ARE FURNISHED AS STANDARD. ON PACKED PUMPS AN ALEMITE FITTING IS PROVIDED IN ONE TAP AND THE REMAINING TAP IS PLUGGED.
  5. DISCHARGE POSITION 1 IS FURNISHED AS STANDARD UNLESS SPECIFIED.
  6. SUCTION AND DISCHARGE FLANGES ARE AMERICAN STANDARD 125 LBS.
  7. CONDUIT BOX IS SHOWN IS APPROXIMATE LOCATION. DIMENSIONS ARE NOT SPECIFIED AS THEY MAY VARY WITH EACH MOTOR MANUFACTURER.

