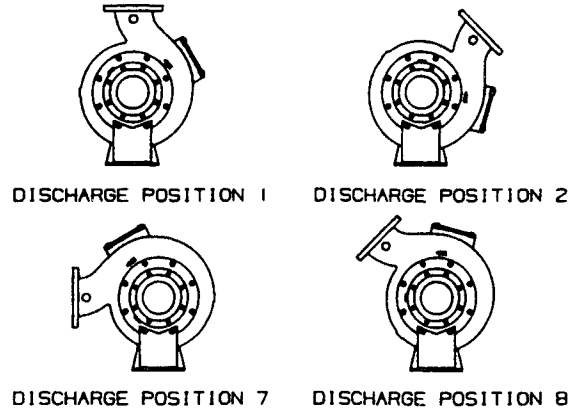
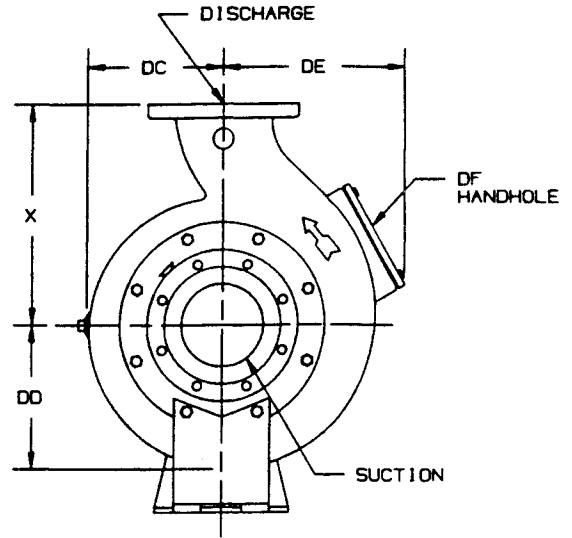
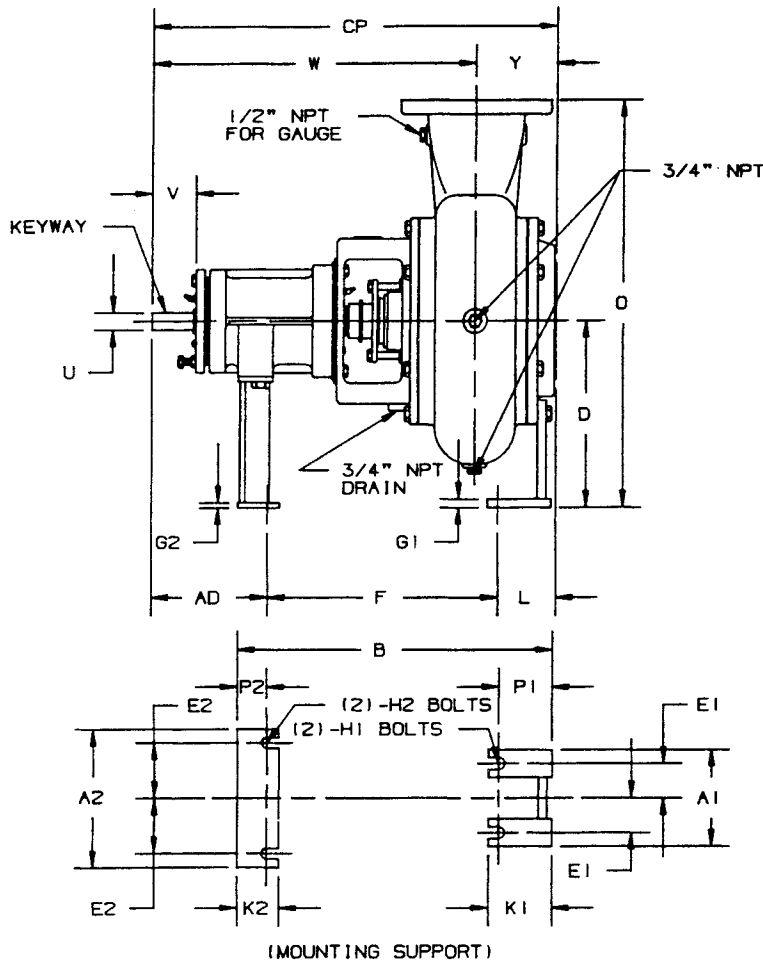


# AURORA MODEL 611A PUMP 6" & 8" PUMPS

SECTION 610 PAGE 201  
DATED OCTOBER 1992  
SUPERSEDES PAGE 201  
DATED NOVEMBER 1988



- NOTES:
1. ALL DIMENSIONS IN INCHES.
  2. DIMENSIONS MAY VARY  $\pm 1/2"$ .
  3. NOT FOR CONSTRUCTION PURPOSES UNLESS CERTIFIED.
  4. TWO (2)  $1/2"$  NPT CONNECTIONS 180° APART, ON THE STUFFING BOX FOR LUBRICATION PURPOSES ARE FURNISHED AS STANDARD. ON PACKED PUMPS AN ALEMITE FITTING IS PROVIDED IN ONE TAP AND THE REMAINING TAP IS PLUGGED.
  5. DISCHARGE POSITION 1 IS FURNISHED AS STANDARD UNLESS SPECIFIED.
  6. SUCTION AND DISCHARGE FLANGES ARE AMERICAN STANDARD 125 LBS.

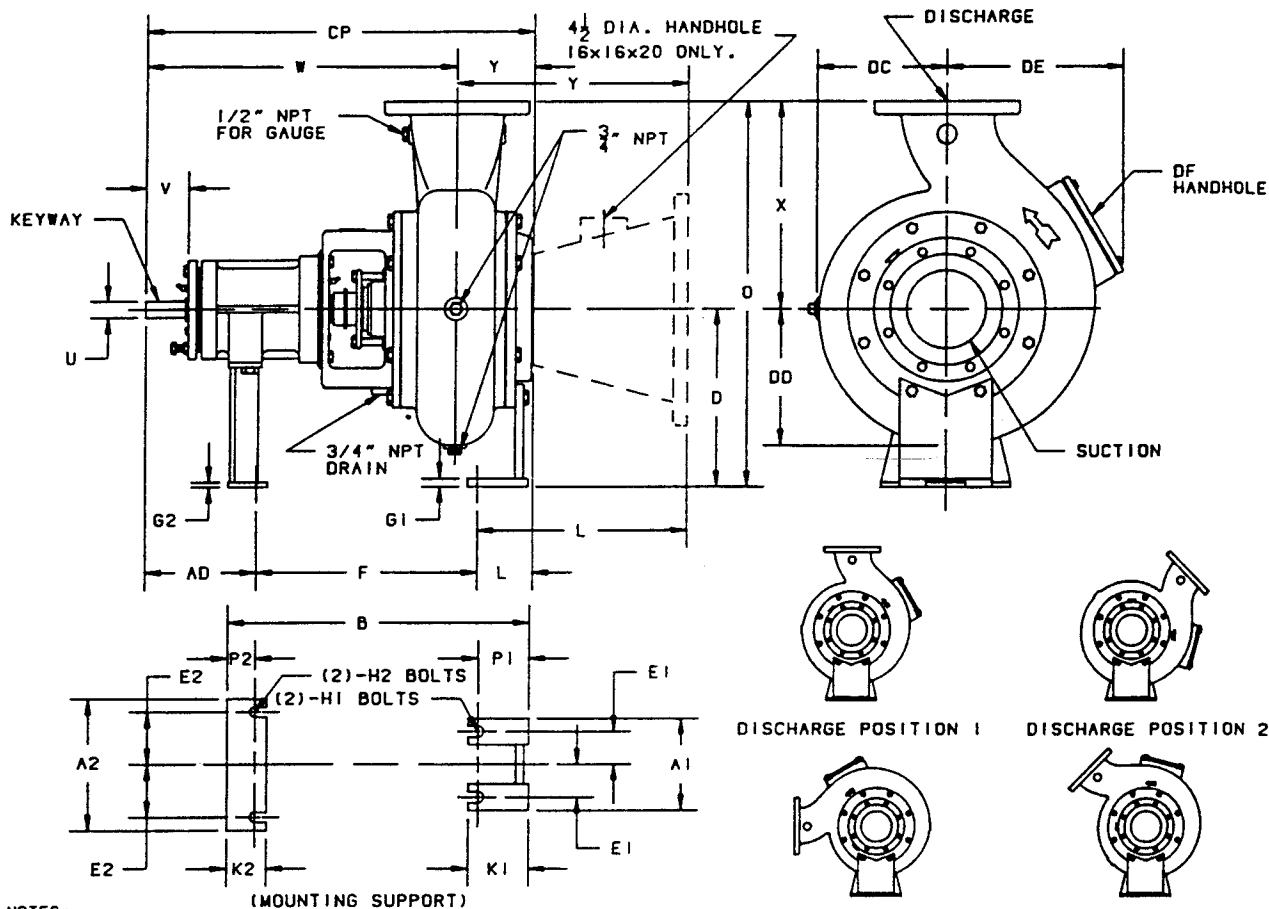
POWER FRAME	U	V	KEYWAY		
			LENGTH	WIDTH	DEPTH
4C, 4D	1 1/4	3 3/16	2	1/4	1/8
5E, 5F	2 3/8	6 3/8	4	5/8	5/16
5G, 5H					

DISCH SUCT CASE BORE	POWER FRAME	A1	A2	B	D	E1	E2	F	G1	G2	H1	H2	K1	K2
6x6x12	4C, 4D	7	10	22 7/8	13 1/2	2 1/2	4	16 7/8	5/8	3/8	5/8	5/8	4 5/8	3
6x6x12	5E, 5F	7	10	28 15/16	13 1/2	2 1/2	3 3/4	22 5/16	5/8	3/8	3/4	3/4	4 5/8	4
6x6x12B	4C, 4D	7	10	22 7/8	13 1/2	2 1/2	4	16 7/8	5/8	3/8	5/8	5/8	4 5/8	3
6x6x12B	5E, 5F	7	10	28 15/16	13 1/2	2 1/2	3 3/4	22 5/16	5/8	3/8	3/4	3/4	4 5/8	4
6x8x15	5E, 5F	11 1/2	11	29 1/8	15 1/4	4 1/4	4 1/4	20 7/8	5/8	3/8	7/8	7/8	7	3 1/2
6x8x18	5E, 5F	11 1/2	12 1/2	29 7/8	17 1/2	4 1/4	5	20 5/8	3/4	1/2	7/8	7/8	7	4 1/2
8x8x15A	5E	11 1/2	11	29 13/16	15 1/4	4 1/4	4 1/4	21 9/16	5/8	3/8	7/8	7/8	7	3 1/2
8x10x18	5G, 5H	11 1/2	12 1/2	31	17 1/2	4 1/4	6	21 3/4	3/4	1/2	7/8	7/8	7	4 1/2
8x10x22	5G, 5H	11	15	31 1/4	21	4	6 1/4	21 3/4	3/4	1/2	7/8	7/8	7 1/4	4 1/2

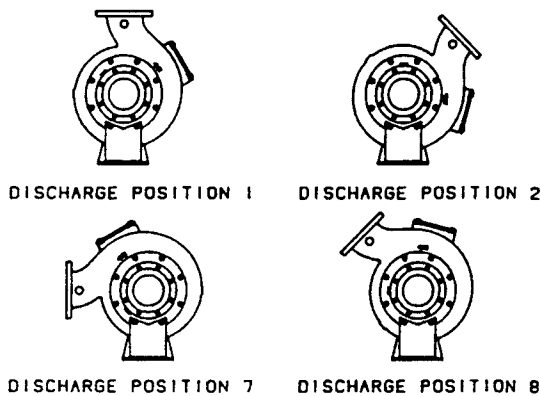
DISCH SUCT CASE BORE	POWER FRAME	L	O	P1	P2	W	X	Y	AD	CP	DC	DD	DE	DF
6x6x12	4C, 4D	4 1/4	27 1/2	3 7/8	2 1/8	23 5/16	14	6 3/16	8 3/8	29 1/2	9 1/2	10 1/2	13 7/8	5x5
6x6x12	5E, 5F	4 1/4	27 1/2	3 7/8	2 3/4	34 3/16	14	6 3/16	13 13/16	40 3/8	9 1/2	10 1/2	13 7/8	5x5
6x6x12B	4C, 4D	4 1/4	29 1/2	3 7/8	2 1/8	23 7/16	16	6 1/16	8 3/8	29 1/2	10 3/8	11 1/16	13 7/8	5x5
6x6x12B	5E, 5F	4 1/4	29 1/2	3 7/8	2 3/4	34 5/16	16	6 1/16	13 13/16	40 3/8	10 3/8	11 1/16	13 7/8	5x5
6x8x15	5E, 5F	5 3/4	31 1/4	6	2 1/4	33 3/4	16	6 1/8	13 1/4	39 7/8	11 3/8	12 1/2	15 3/8	5x5
6x8x18	5E, 5F	5 3/4	35 1/2	6	3 1/4	34 1/16	18	6 7/16	14 1/8	40 1/2	13	14 3/8	16 7/8	5x5
8x8x15A	5E	8 7/16	34 1/4	6	2 1/4	34 1/8	19	9 1/8	13 1/4	43 1/4	12 5/8	13 1/2	15 3/4	5x7
8x10x18	5G, 5H	5 1/2	36 1/2	6	3 1/4	34 5/8	19	6 3/4	14 1/8	41 3/8	12 7/8	14 9/16	16	5x7
8x10x22	5G, 5H	5 5/8	43	6 1/4	3 1/4	34 5/8	22	6 7/8	14 1/8	41 1/2	14 7/8	16 1/2	17 7/8	5x7

# AURORA MODEL 611A PUMP

## 10" - 12" - 14" - 16" PUMPS



- NOTES:
1. ALL DIMENSIONS IN INCHES.
  2. DIMENSIONS MAY VARY  $\pm 1/2"$ .
  3. NOT FOR CONSTRUCTION PURPOSES UNLESS CERTIFIED.
  4. TWO (2) 1/2" NPT CONNECTIONS 180° APART, ON THE STUFFING BOX FOR LUBRICATION PURPOSES ARE FURNISHED AS STANDARD. ON PACKED PUMPS AN ALEMITE FITTING IS PROVIDED IN ONE TAP AND THE REMAINING TAP IS PLUGGED.
  5. DISCHARGE POSITION 1 IS FURNISHED AS STANDARD UNLESS SPECIFIED.
  6. SUCTION AND DISCHARGE FLANGES ARE AMERICAN STANDARD 125 LBS.



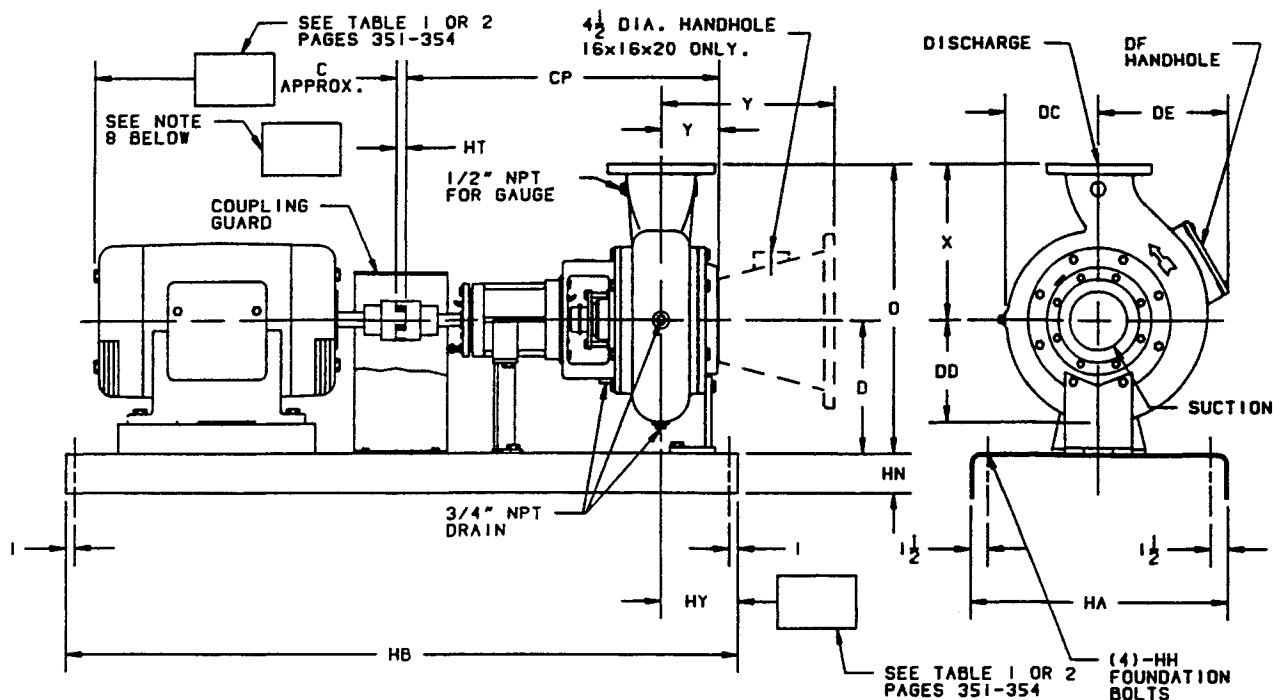
POWER FRAME	U	V	KEYWAY		
			LENGTH	WIDTH	DEPTH
5E, 5F	2 3/8	6 3/8	4	5/8	5/16
5G, 5H					
6D, 6F	2 7/8	6 5/8	5	3/4	3/8
6E	2 7/8	5 3/4	4	3/4	3/8

DISCH SUCT CASE BORE	POWER FRAME	A1	A2	B	D	E1	E2	F	G1	G2	H1	H2	K1	K2
10x10x15	5E, 5F	11 1/2	11	31	15 1/4	4 1/4	4 1/4	22 3/4	5/8	3/8	7/8	7/8	7	3 1/2
10x10x22	6E	11	15	33 3/4	21	4	6 1/4	24 1/8	3/4	1/2	7/8	7/8	7 1/4	4 1/2
10x12x22	5G, 5H	11	15	32 5/16	21	4	6 1/4	22 3/4	3/4	1/2	7/8	7/8	7 1/4	4 1/2
10x12x22	6D	11	15	34 13/16	21	4	6 1/4	25 1/8	3/4	1/2	7/8	7/8	7 1/4	4 1/2
12x12x22	6E	11	15	34 1/4	21	4	6 1/4	25 1/4	3/4	1/2	7/8	7/8	7 1/4	4 1/2
12x14x22A	5G, 5H	11	15	32 3/8	21	4	6 1/4	22 7/8	3/4	1/2	7/8	7/8	7 1/4	4 1/2
12x14x22A	6D	11	15	34 1/4	21	4	6 1/4	25 1/4	3/4	1/2	7/8	7/8	7 1/4	4 1/2
12x14x22B	5G, 5H	11	15	32 3/8	21	4	6 1/4	22 7/8	3/4	1/2	7/8	7/8	7 1/4	4 1/2
12x14x22B	6D	11	15	34 1/4	21	4	6 1/4	25 1/4	3/4	1/2	7/8	7/8	7 1/4	4 1/2
14x14x22A	6E	11	15	34 1/4	21	4	6 1/4	25 1/4	3/4	1/2	7/8	7/8	7 1/4	4 1/2
16x16x20	6F	11	15	39	24	4	6 1/4	29 1/2	3/4	1/2	7/8	7/8	7 1/4	4 1/2

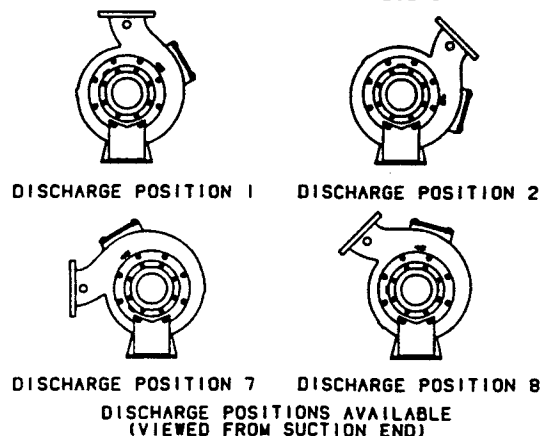
DISCH SUCT CASE BORE	POWER FRAME	L	O	P1	P2	W	X	Y	AD	CP	DC	DD	DE	DF
10x10x15	5E, 5F	8 7/8	35 1/4	6	2 1/4	34 13/16	20	10 1/16	13 1/4	44 7/8	11 5/8	13 5/8	17 1/2	5x7
10x10x22	6E	5 5/8	43	6 1/4	3 1/4	37 1/8	22	6 7/8	14 1/4	44	15	16 1/2	18 1/2	5x7
10x12x22	5G, 5H	5 3/8	43 1/2	6 1/4	3 1/4	35 1/16	22 1/2	7 3/16	14 1/8	42 1/4	15 1/2	17 7/8	20 1/8	5x7
10x12x22	6D	5 3/8	43 1/2	6 1/4	3 1/4	37 9/16	22 1/2	7 3/16	14 1/4	44 3/4	15 1/2	17 7/8	20 1/8	5x7
12x12x22	6E	5 3/8	43 1/2	6 1/4	3 1/4	37 5/8	22 1/2	7 1/4	14 1/4	44 7/8	15 5/8	17 3/4	21	5x7
12x14x22A	5G, 5H	5 3/8	45	6 1/4	3 1/4	35 1/8	24	7 1/4	14 1/8	42 3/8	15 7/8	18 3/4	22 1/4	5x7
12x14x22A	6D	5 3/8	45	6 1/4	3 1/4	37 5/8	24	7 1/4	14 1/4	44 7/8	15 7/8	18 3/4	22 1/4	5x7
12x14x22B	5G, 5H	5 3/8	45	6 1/4	3 1/4	35 1/8	24	7 1/4	14 1/8	42 3/8	15 7/8	18 3/4	22 1/4	5x7
12x14x22B	6D	5 3/8	45	6 1/4	3 1/4	37 5/8	24	7 1/4	14 1/4	44 7/8	15 7/8	18 3/4	22 1/4	5x7
14x14x22A	6E	5 3/8	45	6 1/4	3 1/4	37 5/8	24	7 1/4	14 1/4	44 7/8	15 7/8	18 3/4	22 1/4	5x7
16x16x20	6F	19 1/2	56	6 1/4	3 1/4	39 7/8	32	23 1/2	14 1/8	63 3/8	17 3/4	20 1/2	24	6 DIA

# AURORA MODEL 611A PUMP FORMED STEEL BASE

SECTION 610 PAGE 251  
DATED **OCTOBER 1992**  
SUPERSEDES PAGE 251  
DATED NOVEMBER 1988

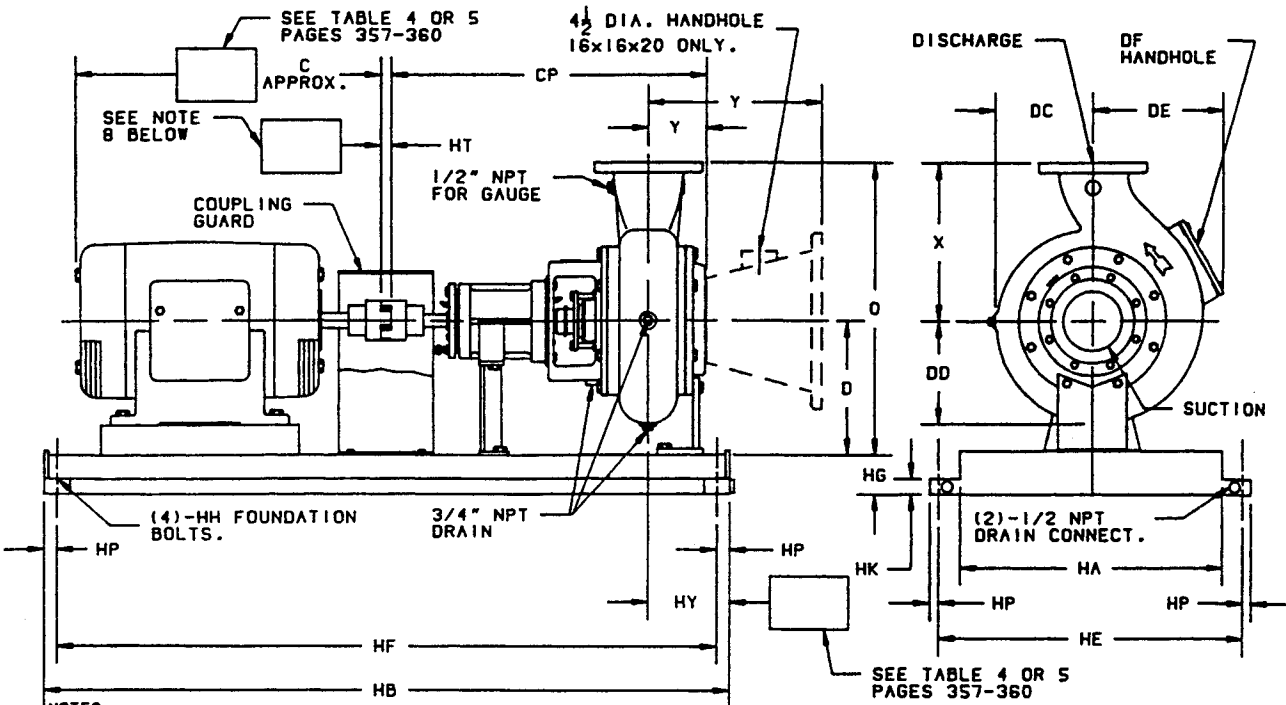


- NOTES:**
1. ALL DIMENSIONS IN INCHES.
  2. DIMENSIONS MAY VARY  $\pm 1/2"$ .
  3. NOT FOR CONSTRUCTION PURPOSES UNLESS CERTIFIED.
  4. TWO (2) 1/2" NPT CONNECTIONS 180° APART, ON THE STUFFING BOX FOR LUBRICATION PURPOSES ARE FURNISHED AS STANDARD. ON PACKED PUMPS AN ALEMITE FITTING IS PROVIDED IN ONE TAP AND THE REMAINING TAP IS PLUGGED.
  5. DISCHARGE POSITION 1 IS FURNISHED AS STANDARD UNLESS SPECIFIED.
  6. SUCTION AND DISCHARGE FLANGES ARE AMERICAN STANDARD 125 LBS.
  7. CONDUIT BOX IS SHOWN IS APPROXIMATE LOCATION. DIMENSIONS ARE NOT SPECIFIED AS THEY MAY VARY WITH EACH MOTOR MANUFACTURER.
  8. STANDARD COUPLING ILLUSTRATED. "HT" DIMENSION, "I" MAXIMUM. FOR SPACER COUPLING SIZE AND "HT" DIMENSION REFER TO PAGES 355-356 (TABLE 3).

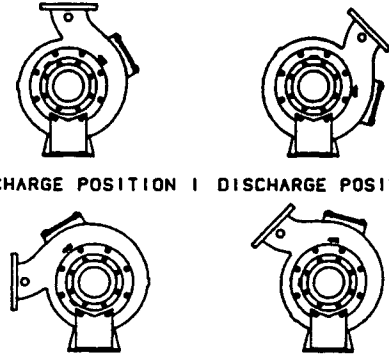


DISCH SUCTION CASE BORE	POWER FRAME	D	O	X	Y	CP	DC	DD	DE	DF	HA	HB	HH	HN
6x6x12	4C, 4D	13 1/2	27 1/2	14	6 3/16	29 1/2	9 1/2	10 1/2	13 7/8	5x5	3 1/2	54	5/8	3 3/8
6x6x12	5E, 5F	13 1/2	27 1/2	14	6 3/16	40 3/8	9 1/2	10 1/2	13 7/8	5x5	4 1/2	60	5/8	3 3/8
6x6x12B	4C, 4D	13 1/2	29 1/2	16	6 1/16	29 1/2	10 3/8	11 1/16	13 7/8	5x5	5 1/2	64	5/8	3 3/8
6x6x12B	5E, 5F	13 1/2	29 1/2	16	6 1/16	40 3/8	10 3/8	11 1/16	13 7/8	5x5	6 1/2	70	5/8	3 3/8
6x8x15	5E, 5F	15 1/4	31 1/4	16	6 1/8	39 7/8	11 3/8	12 1/2	15 3/8	5x5	8 1/8	68	5/8	4
6x8x18	5E, 5F	17 1/2	35 1/2	18	6 7/16	40 1/2	13	14 3/8	16 7/8	5x5	9 1/8	76	5/8	4
8x8x15A	5E	15 1/4	34 1/4	19	9 1/8	43 1/4	12 5/8	13 1/2	15 3/4	5x7	10 1/8	84	5/8	4
8x10x18	5G, 5H	17 1/2	36 1/2	19	6 3/4	41 3/8	12 7/8	14 9/16	16	5x7	16 22	72	5/8	4
8x10x22	5G, 5H	21	43	22	6 7/8	41 1/2	14 7/8	16 1/2	17 7/8	5x7	17 22	84	5/8	4
10x10x15	5E, 5F	15 1/4	35 1/4	20	10 1/16	44 7/8	11 5/8	13 5/8	17 1/2	5x7	18 22	96	5/8	4
10x10x22	6E	21	43	22	6 7/8	44	15	16 1/2	18 1/2	5x7				
10x12x22	5G, 5H	21	43 1/2	22 1/2	7 3/16	42 1/4	15 1/2	17 7/8	20 1/8	5x7				
10x12x22	6D	21	43 1/2	22 1/2	7 3/16	44 3/4	15 1/2	17 7/8	20 1/8	5x7				
12x12x22	6E	21	43 1/2	22 1/2	7 1/4	44 7/8	15 5/8	17 3/4	21	5x7				
12x14x22A	5G, 5H	21	45	24	7 1/4	42 3/8	15 7/8	18 3/4	22 1/4	5x7				
12x14x22A	6D	21	45	24	7 1/4	44 7/8	15 7/8	18 3/4	22 1/4	5x7				
12x14x22B	5G, 5H	21	45	24	7 1/4	42 3/8	15 7/8	18 3/4	22 1/4	5x7				
12x14x22B	6D	21	45	24	7 1/4	44 7/8	15 7/8	18 3/4	22 1/4	5x7				
14x14x22A	6E	21	45	24	7 1/4	44 7/8	15 7/8	18 3/4	22 1/4	5x7				
16x16x20	6F	24	56	32	23 1/2	63 3/8	17 3/4	20 1/2	24	6 DIA				

# AURORA MODEL 611A PUMP STEEL DRIP RIM BASE



- NOTES:
1. ALL DIMENSIONS IN INCHES.
  2. DIMENSIONS MAY VARY ± 1/2".
  3. NOT FOR CONSTRUCTION PURPOSES UNLESS CERTIFIED.
  4. TWO (2) 1/2" NPT CONNECTIONS 180° APART, ON THE STUFFING BOX FOR LUBRICATION PURPOSES ARE FURNISHED AS STANDARD. ON PACKED PUMPS AN ALEMITE FITTING IS PROVIDED IN ONE TAP AND THE REMAINING TAP IS PLUGGED.
  5. DISCHARGE POSITION 1 IS FURNISHED AS STANDARD UNLESS SPECIFIED.
  6. SUCTION AND DISCHARGE FLANGES ARE AMERICAN STANDARD 125 LBS.
  7. CONDUIT BOX IS SHOWN IS APPROXIMATE LOCATION. DIMENSIONS ARE NOT SPECIFIED AS THEY MAY VARY WITH EACH MOTOR MANUFACTURER.
  8. STANDARD COUPLING ILLUSTRATED. "HT" DIMENSION 1" MAXIMUM. FOR SPACER COUPLING SIZE AND "HT" DIMENSION REFER TO PAGES 355-356 (TABLE 3).
  9. 3 GROUT HOLES ARE PROVIDED IN TOP OF BASE.



DISCHARGE POSITION 1 DISCHARGE POSITION 2

DISCHARGE POSITION 7 DISCHARGE POSITION 8  
 DISCHARGE POSITIONS AVAILABLE  
 (VIEWED FROM SUCTION END)

BASE	SIZE	HA	HB	HE	HF	HG	HH	HK	HP
10	14x56	14	56 1/2	19	55	3	5/8	1 1/2	3/4
13	18x64	18	64 1/2	25 1/8	62 7/8	4	3/4	2	13/16
14	18x72	18	72 1/2	25 1/8	70 7/8	4	3/4	2	13/16
17	22x74	22	74 1/2	29 1/8	72 7/8	4 1/2	3/4	2	13/16
18	22x82	22	82 1/2	29 1/8	80 7/8	4 1/2	3/4	2	13/16
19	22x90	22	90 1/2	29 1/8	88 7/8	4 1/2	3/4	2	13/16
21	30x110	30	110 1/2	37 1/8	108 7/8	4 1/2	3/4	2	13/16

DISCH SUCT CASE BORE	POWER FRAME	D	O	X	Y	CP	DC	DD	DE	DF
6x6x12	4C,4D	13 1/2	27 1/2	14	6 3/16	29 1/2	9 1/2	10 1/2	13 7/8	5x5
6x6x12	5E,5F	13 1/2	27 1/2	14	6 3/16	40 3/8	9 1/2	10 1/2	13 7/8	5x5
6x6x12B	4C,4D	13 1/2	29 1/2	16	6 1/16	29 1/2	10 3/8	11 1/16	13 7/8	5x5
6x6x12B	5E,5F	13 1/2	29 1/2	16	6 1/16	40 3/8	10 3/8	11 1/16	13 7/8	5x5
6x8x15	5E,5F	15 1/4	31 1/4	16	6 1/8	39 7/8	11 3/8	12 1/2	15 3/8	5x5
6x8x18	5E,5F	17 1/2	35 1/2	18	6 7/16	40 1/2	13	14 3/8	16 7/8	5x5
8x8x15A	5E	15 1/4	34 1/4	19	9 1/8	43 1/4	12 5/8	13 1/2	15 3/4	5x7
8x10x18	5G,5H	17 1/2	36 1/2	19	6 3/4	41 3/8	12 7/8	14 9/16	16	5x7
8x10x22	5G,5H	21	43	22	6 7/8	41 1/2	14 7/8	16 1/2	17 7/8	5x7
10x10x15	5E,5F	15 1/4	35 1/4	20	10 1/16	44 7/8	11 5/8	13 5/8	17 1/2	5x7
10x10x22	6E	21	43	22	6 7/8	44	15	16 1/2	18 1/2	5x7
10x12x22	5G,5H	21	43 1/2	22 1/2	7 3/16	42 1/4	15 1/2	17 7/8	20 1/8	5x7
10x12x22	6D	21	43 1/2	22 1/2	7 3/16	44 3/4	15 1/2	17 7/8	20 1/8	5x7
12x12x22	6E	21	43 1/2	22 1/2	7 1/4	44 7/8	15 5/8	17 3/4	21	5x7
12x14x22A	5G,5H	21	45	24	7 1/4	42 3/8	15 7/8	18 3/4	22 1/4	5x7
12x14x22A	6D	21	45	24	7 1/4	44 7/8	15 7/8	18 3/4	22 1/4	5x7
12x14x22B	5G,5H	21	45	24	7 1/4	42 3/8	15 7/8	18 3/4	22 1/4	5x7
12x14x22B	6D	21	45	24	7 1/4	44 7/8	15 7/8	18 3/4	22 1/4	5x7
14x14x22A	6E	21	45	24	7 1/4	44 7/8	15 7/8	18 3/4	22 1/4	5x7
16x16x20	6F	24	56	32	23 1/2	63 3/8	17 3/4	20 1/2	24	6 DIA

# AURORA MODEL 611A PUMP FORMED STEEL BASE

SECTION 610 PAGE 351  
DATED OCTOBER 1992  
SUPERSEDES PAGE 351  
DATED NOVEMBER 1988

TABLE 1

DISCH. CASE BORE SUCT.	POWER FRAME	MOTOR FRAME	254T	256T	284TS	284T	286TS	286T
			C	21	23	22	24	24
6x6x12	4	BASE	3	3	3	4	4	4
		HY	8	8	8	8	8	8
6x6x12B	4	BASE	3	3	3	4	4	4
		HY	8	8	8	8	8	8
6x6x12	5	BASE			5	6	6	6
		HY			8	8	8	8
6x6x12B	5	BASE			5	6	6	6
		HY			8	8	8	8
6x8x15	5	BASE			5	6	6	6
		HY			8	8	8	8
6x8x18	5	BASE			8	8	8	8
		HY			8	8	8	8
8x8x15A	5	BASE		6	6	6	6	6
		HY		9 3/4	9 3/4	9 3/4	9 3/4	9 3/4
8x10x18	5	BASE			8	8	8	8
		HY			8	8	8	8
8x10x22	5	BASE						
		HY						
10x10x15	5	BASE			6	6	6	6
		HY			10	10	10	10
10x12x22	5	BASE						
		HY						
12x14x22A	5	BASE						
		HY						
12x14x22B	5	BASE						
		HY						
16x16x20	6	BASE						
		HY						

DISCH. CASE BORE SUCT.	POWER FRAME	MOTOR FRAME	324TS	324T	326TS	326T	364TS	364T	365TS	365T
			C	25	26	26	28	27	29	28
6x6x12	4	BASE	4	4						
		HY	8	8						
6x6x12B	4	BASE	4	4						
		HY	8	8						
6x6x12	5	BASE	8	8	8	9	16	16	16	16
		HY	8	8	8	8	8	8	8	8
6x6x12B	5	BASE	8	8	8	9	16	16	16	16
		HY	8	8	8	8	8	8	8	8
6x8x15	5	BASE	8	8	8	9	9	9	9	17
		HY	8	8	8	8	8	8	8	8
6x8x18	5	BASE	8	8	8	9	16	16	16	16
		HY	8	8	8	8	8	8	8	8
8x8x15A	5	BASE	9	9	9	9	16	16	16	16
		HY	9 3/4	9 3/4	9 3/4	9 3/4	9 3/4	9 3/4	9 3/4	9 3/4
8x10x18	5	BASE	8	8	8	9	16	16	16	16
		HY	8	8	8	8	8	8	8	8
8x10x22	5	BASE	16	16	16	16	16	16	16	16
		HY	8	8	8	8	8	8	8	8
10x10x15	5	BASE	9	9	9	9	17	17	17	17
		HY	10	10	10	10	10	10	10	10
10x12x22	5	BASE					16	16	16	17
		HY					8	8	8	8
12x14x22A	5	BASE					16	16	16	17
		HY					8	8	8	8
12x14x22B	5	BASE					16	16	16	17
		HY					8	8	8	8
16x16x20	6	BASE					17	17	17	17
		HY					10 1/4	10 1/4	10 1/4	10 1/4

NOTES:  
1. ALL DIMENSIONS IN INCHES.  
2. NOT FOR CONSTRUCTION PURPOSES UNLESS CERTIFIED.

**AURORA MODEL 611A PUMP  
 FORMED STEEL BASE  
 STANDARD COUPLING**

TABLE 1 (CONTINUED)

CASE BORE SUCT. DISCH.	POWER FRAME	MOTOR FRAME	404TS	404T	405TS	405T	444TS	444T	445TS	445T
		C	30	33	31	34	34	38	36	40
6x8x15	5	BASE	17	17	17	17	17	17	17	17
		HY	8	8	8	8	8	8	8	8
6x8x18	5	BASE	16	17	17	17	17	17	17	17
		HY	8	8	8	8	8	8	8	8
8x8x15A	5	BASE	17	17	17	17				
		HY	9 3/4	9 3/4	9 3/4	9 3/4				
8x10x18	5	BASE	16	17	17	17	17	17	17	17
		HY	8	8	8	8	8	8	8	8
8x10x22	5	BASE	16	17	17	17	17	17	17	17
		HY	8	8	8	8	8	8	8	8
10x10x15	5	BASE	17	17	17	17	17	17	17	17
		HY	10	10	10	10	10	10	10	10
10x10x22	6	BASE								17
		HY								8
10x12x22	5	BASE	17	17	17	17	17	17	17	17
		HY	8	8	8	8	8	8	8	8
10x12x22	6	BASE	17	17	17	17	17	17	17	17
		HY	8	8	8	8	8	8	8	8
12x12x22	6	BASE								17
		HY								8
12x14x22A	5	BASE	17	17	17	17	17	17	17	17
		HY	8	8	8	8	8	8	8	8
12x14x22A	6	BASE	17	17	17	17	17	17	17	17
		HY	8	8	8	8	8	8	8	8
12x14x22B	5	BASE	17	17	17	17	17	17	17	17
		HY	8	8	8	8	8	8	8	8
12x14x22B	6	BASE	17	17	17	17	17	17	17	17
		HY	8	8	8	8	8	8	8	8
14x14x22A	6	BASE								17
		HY								8
16x16x20	6	BASE	17	18	18	18	18	18	18	18
		HY	10 1/4	10 1/4	10 1/4	10 1/4	10 1/4	10 1/4	10 1/4	10 1/4

NOTES:

1. ALL DIMENSIONS IN INCHES.
2. NOT FOR CONSTRUCTION PURPOSES UNLESS CERTIFIED.

# AURORA MODEL 611A PUMP FORMED STEEL BASE SPACER COUPLING

SECTION 610 PAGE 353  
DATED OCTOBER 1992  
SUPERSEDES PAGE 353  
DATED NOVEMBER 1988

TABLE 2

CASE BORE SUCT. DISCH.	POWER FRAME	MOTOR FRAME	254T	256T	284TS	284T	286TS	286T
			C 21	23	22	24	24	25
6x6x12	4	BASE	4	4	4	4	4	4
		HY	8	8	8	8	8	8
6x6x12B	4	BASE	4	4	4	4	4	4
		HY	8	8	8	8	8	8
6x6x12	5	BASE			9	9	9	9
		HY			8	8	8	8
6x6x12B	5	BASE			9	9	9	9
		HY			8	8	8	8
6x8x15	5	BASE			6	9	9	9
		HY			8	8	8	8
6x8x18	5	BASE			9	9	9	9
		HY			8	8	8	8
8x8x15A	5	BASE		9	9	9	9	9
		HY		9 3/4	9 3/4	9 3/4	9 3/4	9 3/4
8x10x18	5	BASE			9	9	9	9
		HY			8	8	8	8
8x10x22	5	BASE						
		HY						
10x10x15	5	BASE			9	9	9	9
		HY			10	10	10	10
10x12x22	5	BASE						
		HY						
12x14x22A	5	BASE						
		HY						
12x14x22B	5	BASE						
		HY						
16x16x20	6	BASE						
		HY						

CASE BORE SUCT. DISCH.	POWER FRAME	MOTOR FRAME	324TS	324T	326TS	326T	364TS	364T	365TS	365T
			C 25	26	26	28	27	29	28	30
6x6x12	4	BASE	4	5						
		HY	8	8						
6x6x12B	4	BASE	4	5						
		HY	8	8						
6x6x12	5	BASE	9	9	9	9	17	17	17	17
		HY	8	8	8	8	8	8	8	8
6x6x12B	5	BASE	9	9	9	9	17	17	17	17
		HY	8	8	8	8	8	8	8	8
6x8x15	5	BASE	9	9	9	10	17	17	17	17
		HY	8	8	8	8	8	8	8	8
6x8x18	5	BASE	9	9	9	9	17	17	17	17
		HY	8	8	8	8	8	8	8	8
8x8x15A	5	BASE	9	10	10	10	17	17	17	17
		HY	9 3/4	9 3/4	9 3/4	9 3/4	9 3/4	9 3/4	9 3/4	9 3/4
8x10x18	5	BASE	9	9	9	10	17	17	17	17
		HY	8	8	8	8	8	8	8	8
8x10x22	5	BASE	17	17	17	17	17	17	17	17
		HY	8	8	8	8	8	8	8	8
10x10x15	5	BASE	9	10	10	10	17	17	17	17
		HY	0	10	10	10	10	10	10	10
10x12x22	5	BASE					17	17	17	17
		HY					8	8	8	8
12x14x22A	5	BASE					17	17	17	17
		HY					8	8	8	8
12x14x22B	5	BASE					17	17	17	17
		HY					8	8	8	8
16x16x20	6	BASE					18	18	18	18
		HY					10 1/4	10 1/4	10 1/4	10 1/4

NOTES:  
1. ALL DIMENSIONS IN INCHES.  
2. NOT FOR CONSTRUCTION PURPOSES UNLESS CERTIFIED.

**AURORA MODEL 611A PUMP  
 FORMED STEEL BASE  
 STANDARD COUPLING**

TABLE 2 (CONTINUED)

DISCH. SUCT. CASE BORE	POWER FRAME	MOTOR FRAME	404TS	404T	405TS	405T	444TS	444T	445TS	445T
		C	30	33	31	34	34	38	36	40
6x8x15	5	BASE	17	17	17	17	17	18	17	18
		HY	8	8	8	8	8	8	8	8
6x8x18	5	BASE	17	17	17	17	17	18	17	18
		HY	8	8	8	8	8	8	8	8
8x8x15A	5	BASE	17	17	17	17				
		HY	9 3/4	9 3/4	9 3/4	9 3/4				
8x10x18	5	BASE	17	17	17	17	17	18	18	18
		HY	8	8	8	8	8	8	8	8
8x10x22	5	BASE	17	17	17	17	17	18	18	18
		HY	8	8	8	8	8	8	8	8
10x10x15	5	BASE	17	18	17	18	18	18	18	18
		HY	10	10	10	10	10	10	10	10
10x10x22	6	BASE								18
		HY								8
10x12x22	5	BASE	17	17	17	18	18	18	18	18
		HY	8	8	8	8	8	8	8	8
10x12x22	6	BASE	17	18	17	18	18	18	18	18
		HY	8	8	8	8	8	8	8	8
12x12x22	6	BASE								18
		HY								8
12x14x22A	5	BASE	17	17	17	18	18	18	18	18
		HY	8	8	8	8	8	8	8	8
12x14x22A	6	BASE	17	17	17	18	18	18	18	18
		HY	8	8	8	8	8	8	8	8
12x14x22B	5	BASE	17	17	17	18	18	18	18	18
		HY	8	8	8	8	8	8	8	8
12x14x22B	6	BASE	17	17	17	18	18	18	18	18
		HY	8	8	8	8	8	8	8	8
14x14x22A	6	BASE								18
		HY								8
16x16x20	6	BASE	18	18	18	18	18	18	18	18
		HY	10 1/4	10 1/4	10 1/4	10 1/4	10 1/4	10 1/4	10 1/4	10 1/4

NOTES:  
 1. ALL DIMENSIONS IN INCHES.  
 2. NOT FOR CONSTRUCTION PURPOSES UNLESS CERTIFIED.



# AURORA MODEL 611A PUMP SPACER COUPLING

SECTION 610 PAGE 355  
DATED OCTOBER 1992  
SUPERSEDES PAGE 355  
DATED NOVEMBER 1988

TABLE 3

DISCH. SUCT. CASE BORE	POWER FRAME	MOTOR FRAME	254T	256T	284TS	284T	286TS	286T	324TS	324T	326TS	326T	364TS	364T	365TS	365T	
			SIZE	HT	SIZE	HT	SIZE	HT	SIZE	HT	SIZE	HT	SIZE	HT	SIZE	HT	SIZE
6x6x12	4	SIZE	7	8	8	8	9	9	9	9							
		HT	5	5	5	5	5	5	5	5							
6x6x12B	4	SIZE	7	8	8	8	9	9	9	9							
		HT	5	5	5	5	5	5	5	5							
6x6x12	5	SIZE			9	9	9	9	9	9	10	10	12	12	12	12	12
		HT			7 3/4	7 3/4	7 3/4	7 3/4	7 3/4	7 3/4	7 3/4	7 3/4	7 3/4	7 3/4	7 3/4	7 3/4	7 3/4
6x6x12B	5	SIZE			9	9	9	9	9	9	10	10	12	12	12	12	12
		HT			7 3/4	7 3/4	7 3/4	7 3/4	7 3/4	7 3/4	7 3/4	7 3/4	7 3/4	7 3/4	7 3/4	7 3/4	7 3/4
6x8x15	5	SIZE			9	9	9	9	9	9	10	10	12	10	12	12	12
		HT			7 3/4	7 3/4	7 3/4	7 3/4	7 3/4	7 3/4	7 3/4	7 3/4	7 3/4	7 3/4	7 3/4	7 3/4	7 3/4
6x8x18	5	SIZE			9	9	9	9	9	9	10	10	10	10	12	12	12
		HT			7 3/4	7 3/4	7 3/4	7 3/4	7 3/4	7 3/4	7 3/4	7 3/4	7 3/4	7 3/4	7 3/4	7 3/4	7 3/4
8x8x15A	5	SIZE		9	9	9	9	9	9	9	10	10	12	10	12	12	12
		HT		7 3/4	7 3/4	7 3/4	7 3/4	7 3/4	7 3/4	7 3/4	7 3/4	7 3/4	7 3/4	7 3/4	7 3/4	7 3/4	7 3/4
8x10x18	5	SIZE			9	9	9	9	9	9	10	10	10	10	12	12	12
		HT			7 3/4	7 3/4	7 3/4	7 3/4	7 3/4	7 3/4	7 3/4	7 3/4	7 3/4	7 3/4	7 3/4	7 3/4	7 3/4
8x10x22	5	SIZE			10	10	10	10	10	10	10	10	10	10	11	11	11
		HT			9	9	9	9	9	9	9	9	9	9	9	9	9
10x10x15	5	SIZE			10	10	10	10	10	10	10	10	10	10	11	11	11
		HT			9	9	9	9	9	9	9	9	9	9	9	9	9
10x12x22	5	SIZE											10	10	11	11	
		HT												9	9	9	9
12x14x22A	5	SIZE											10	10	11	11	
		HT												9	9	9	9
12x14x22B	5	SIZE											10	10	11	11	
		HT												9	9	9	9
16x16x20	6	SIZE											11	11	11	11	
		HT												9	9	9	9

NOTES:

1. ALL DIMENSIONS IN INCHES.
2. NOT FOR CONSTRUCTION PURPOSES UNLESS CERTIFIED.
3. SIZE: COUPLING SIZE FOR TYPE SC WOODS SURE-FLEX SPACER COUPLINGS.
4. HT: COUPLING GAP (DISTANCE BETWEEN SHAFTS)

# AURORA MODEL 611A PUMP SPACER COUPLING

TABLE 3 (CONTINUED)

CASE BORE SUCT. DISCH.	POWER FRAME	MOTOR FRAME	404TS	404T	405TS	405T	444TS	444T	445TS	445T
			SIZE	HT	SIZE	HT	SIZE	HT	SIZE	HT
6x8x15	5	SIZE	12	12	12	12	12	12	13	13
		HT	7 3/4	7 3/4	7 3/4	7 3/4	7 3/4	7 3/4	7 3/4	7 3/4
6x8x18	5	SIZE	12	12	12	12	12	12	13	13
		HT	7 3/4	7 3/4	7 3/4	7 3/4	7 3/4	7 3/4	7 3/4	7 3/4
8x8x15A	5	SIZE	12	12	12	12				
		HT	7 3/4	7 3/4	7 3/4	7 3/4				
8x10x18	5	SIZE	12	12	12	12	12	12	13	13
		HT	7 3/4	7 3/4	7 3/4	7 3/4	7 3/4	7 3/4	7 3/4	7 3/4
8x10x22	5	SIZE	11	11	11	11	13	13	13	13
		HT	9	9	9	9	9	9	9	9
10x10x15	5	SIZE	11	11	12	12	13	13	13	13
		HT	9	9	9	9	9	9	9	9
10x10x22	6	SIZE								13
		HT								
10x12x22	5	SIZE	12	12	12	12	12	12	13	13
		HT	9	9	9	9	9	9	9	9
10x12x22	6	SIZE	12	12	12	12	12	12	13	13
		HT	9	9	9	9	9	9	9	9
12x12x22	6	SIZE								13
		HT								
12x14x22A	5	SIZE	12	12	12	12	12	12	13	13
		HT	9	9	9	9	9	9	9	9
12x14x22A	6	SIZE	12	12	12	12	12	12	13	13
		HT	9	9	9	9	9	9	9	9
12x14x22B	5	SIZE	12	12	12	12	12	12	13	13
		HT	9	9	9	9	9	9	9	9
12x14x22B	6	SIZE	12	12	12	12	12	12	13	13
		HT	9	9	9	9	9	9	9	9
14x14x22A	6	SIZE								13
		HT								
16x16x20	6	SIZE	11	11	11	11	11	11	11	11
		HT	9	9	9	9	9	9	9	9

**NOTES:**

1. ALL DIMENSIONS IN INCHES.
2. NOT FOR CONSTRUCTION PURPOSE UNLESS CERTIFIED.
3. SIZE: COUPLING SIZE FOR TYPE SC WOODS SURE-FLEX SPACER COUPLINGS.
4. HT: COUPLING GAP (DISTANCE BETWEEN SHAFTS)

# AURORA MODEL 611A PUMP DRIP RIM STEEL BASE STANDARD COUPLING

SECTION 610 PAGE 357  
DATED OCTOBER 1992  
SUPERSEDES PAGE 357  
DATED NOVEMBER 1988

TABLE 4

DISCH. SUCTION CASE BORE	POWER FRAME	MOTOR	254T	256T	284TS	284T	286TS	286T
		FRAME						
6x6x12	4	C	21	23	22	24	24	25
		BASE	10	10	10	10	10	10
6x6x12B	4	HY	8	8	8	8	8	8
		BASE	10	10	10	10	10	10
6x6x12	5	HY	8	8	8	8	8	8
		BASE			14	14	14	14
6x6x12B	5	HY			8	8	8	8
		BASE			14	14	14	14
6x8x15	5	HY			8	8	8	8
		BASE			14	14	14	14
6x8x18	5	HY			8	8	8	8
		BASE			14	14	14	14
8x8x15A	5	HY		14	14	14	14	14
		BASE		9 3/4	9 3/4	9 3/4	9 3/4	9 3/4
8x10x18	5	HY			8	8	8	8
		BASE			14	14	14	14
8x10x22	5	HY						
		BASE						
10x10x15	5	HY			17	17	17	17
		BASE			11	11	11	11
10x12x22	5	HY						
		BASE						
12x14x22A	5	HY						
		BASE						
12x14x22B	5	HY						
		BASE						
16x16x20	6	HY						
		BASE						

DISCH. SUCTION CASE BORE	POWER FRAME	MOTOR	324TS	324T	326TS	326T	364TS	364T	365TS	365T
		FRAME								
6x6x12	4	C	25	26	26	28	27	29	28	30
		BASE	10	10						
6x6x12B	4	HY	8	8						
		BASE	10	10						
6x6x12	5	HY	8	8						
		BASE	14	14	14	14	14	14	14	14
6x6x12B	5	HY	8	8	8	8	8	8	8	8
		BASE	14	14	14	14	14	14	14	14
6x8x15	5	HY	8	8	8	8	8	8	8	8
		BASE	14	14	14	14	14	14	14	14
6x8x18	5	HY	8	8	8	8	8	8	8	8
		BASE	14	14	14	14	14	14	14	14
8x8x15A	5	HY	8	8	8	8	8	8	8	8
		BASE	14	14	14	14	17	17	17	17
8x10x18	5	HY	9 3/4	9 3/4	9 3/4	9 3/4	9 3/4	9 3/4	9 3/4	9 3/4
		BASE	14	14	14	14	17	17	17	17
8x10x22	5	HY	8	8	8	8	8	8	8	8
		BASE	17	17	17	17	18	18	18	18
10x10x15	5	HY	8	8	8	8	8	8	8	8
		BASE	17	17	17	17	18	18	18	18
10x12x22	5	HY	11	11	11	11	11	11	11	11
		BASE					17	17	17	17
12x14x22A	5	HY					10	10	10	10
		BASE					18	18	18	18
12x14x22B	5	HY					10	10	10	10
		BASE					18	18	18	18
16x16x20	6	HY					10	10	10	10
		BASE					13	13	13	13
		HY					11 1/2	11 1/2	11 1/2	11 1/2

NOTES:  
1. ALL DIMENSIONS IN INCHES.  
2. NOT FOR CONSTRUCTION PURPOSES UNLESS CERTIFIED.

**AURORA MODEL 611A PUMP**  
**DRIP RIM STEEL BASE**  
**STANDARD COUPLING**

TABLE 4 (CONTINUED)

DISCH. SUCT. CASE BORE	POWER FRAME	MOTOR FRAME	404TS	404T	405TS	405T	444TS	444T	445TS	445T
		C	30	33	31	34	34	38	36	40
6x8x15	5	BASE	18	18	18	18	19	19	19	19
		HY	8	8	8	8	8	8	8	8
6x8x18	5	BASE	18	18	18	18	18	18	19	19
		HY	8	8	8	8	8	8	8	8
8x8x15A	5	BASE	18	18	18	18				
		HY	9 3/4	9 3/4	9 3/4	9 3/4				
8x10x18	5	BASE	18	18	18	18	18	18	19	19
		HY	8	8	8	8	8	8	8	8
8x10x22	5	BASE	18	18	18	18	19	19	19	19
		HY	8	8	8	8	8	8	8	8
10x10x15	5	BASE	18	18	18	18	19	19	19	19
		HY	11	11	11	11	11	11	11	11
10x10x22	6	BASE								21
		HY								10
10x12x22	5	BASE	18	18	18	18	18	18	19	19
		HY	10	10	10	10	10	10	10	10
10x12x22	6	BASE	18	18	18	18	19	19	19	19
		HY	10	10	10	10	10	10	10	10
12x12x22	6	BASE								21
		HY								10
12x14x22A	5	BASE	18	18	18	18	19	19	19	19
		HY	10	10	10	10	10	10	10	10
12x14x22A	6	BASE	18	18	18	18	19	19	19	19
		HY	10	10	10	10	10	10	10	10
12x14x22B	5	BASE	18	18	18	18	19	19	19	19
		HY	10	10	10	10	10	10	10	10
12x14x22B	6	BASE	18	18	18	18	19	19	19	19
		HY	10	10	10	10	10	10	10	10
14x14x22A	6	BASE								21
		HY								10
16x16x20	6	BASE	18	19	19	19	19	19	19	19
		HY	11 1/2	11 1/2	11 1/2	11 1/2	11 1/2	11 1/2	11 1/2	11 1/2

NOTES:

1. ALL DIMENSIONS IN INCHES.
2. NOT FOR CONSTRUCTION PURPOSES UNLESS CERTIFIED.

# AURORA MODEL 611A PUMP DRIP RIM STEEL BASE SPACER COUPLING

SECTION 610 PAGE 359  
DATED OCTOBER 1992  
SUPERSEDES PAGE 359  
DATED NOVEMBER 1988

TABLE 5

DISCH. CASE BORE SUCT.	POWER FRAME	MOTOR FRAME	254T	256T	284TS	284T	286TS	286T
			C	21	23	22	24	24
6x6x12	4	BASE	10	13	13	13	13	13
		HY	8	8	8	8	8	8
6x6x12B	4	BASE	10	13	13	13	13	13
		HY	8	8	8	8	8	8
6x6x12	5	BASE			14	14	17	17
		HY			8	8	8	8
6x6x12B	5	BASE			14	14	17	17
		HY			8	8	8	8
6x8x15	5	BASE			14	14	17	17
		HY			8	8	8	8
6x8x18	5	BASE			14	14	17	17
		HY			8	8	8	8
8x8x15A	5	BASE		17	17	17	17	17
		HY		9 3/4	9 3/4	9 3/4	9 3/4	9 3/4
8x10x18	5	BASE			17	17	17	17
		HY			8	8	8	8
8x10x22	5	BASE						
		HY						
10x10x15	5	BASE			18	18	18	18
		HY			11	11	11	11
10x12x22	5	BASE						
		HY						
12x14x22A	5	BASE						
		HY						
12x14x22B	5	BASE						
		HY						
16x16x20	6	BASE						
		HY						

DISCH. CASE BORE SUCT.	POWER FRAME	MOTOR FRAME	324TS	324T	326TS	326T	364TS	364T	365TS	365T
			C	25	26	26	28	27	29	28
6x6x12	4	BASE	13	13						
		HY	8	8						
6x6x12B	4	BASE	13	13						
		HY	8	8						
6x6x12	5	BASE	17	17	18	18	18	18	18	18
		HY	8	8	8	8	8	8	8	8
6x6x12B	5	BASE	17	17	18	18	18	18	18	18
		HY	8	8	8	8	8	8	8	8
6x8x15	5	BASE	17	17	18	18	18	18	18	18
		HY	8	8	8	8	8	8	8	8
6x8x18	5	BASE	17	17	18	18	18	18	18	18
		HY	8	8	8	8	8	8	8	8
8x8x15A	5	BASE	18	18	18	18	18	18	18	18
		HY	9 3/4	9 3/4	9 3/4	9 3/4	9 3/4	9 3/4	9 3/4	9 3/4
8x10x18	5	BASE	18	18	18	18	18	18	18	18
		HY	8	8	8	8	8	8	8	8
8x10x22	5	BASE	18	18	18	18	18	18	19	19
		HY	8	8	8	8	8	8	8	8
10x10x15	5	BASE	18	18	18	18	18	18	18	18
		HY	11	11	11	11	11	11	11	11
10x12x22	5	BASE					18	18	18	18
		HY					10	10	10	10
12x14x22A	5	BASE					18	18	18	18
		HY					10	10	10	10
12x14x22B	5	BASE					18	18	18	18
		HY					10	10	10	10
16x16x20	6	BASE					19	19	19	19
		HY					11 1/2	11 1/2	11 1/2	11 1/2

NOTES:  
1. ALL DIMENSIONS IN INCHES.  
2. NOT FOR CONSTRUCTION PURPOSES UNLESS CERTIFIED.

**AURORA MODEL 611A PUMP  
 DRIP RIM STEEL BASE  
 SPACER COUPLING**

TABLE 5 (CONTINUED)

DISCH. SUCT. CASE BORE	POWER FRAME	MOTOR FRAME	404TS	404T	405TS	405T	444TS	444T	445TS	445T
		C	30	33	31	34	34	38	36	40
6x8x15	5	BASE	18	18	18	18	19	19	19	19
		HY	8	8	8	8	8	8	8	8
6x8x18	5	BASE	18	18	18	18	19	19	19	19
		HY	8	8	8	8	8	8	8	8
8x8x15A	5	BASE	18	18	19	19				
		HY	9 3/4	9 3/4	9 3/4	9 3/4				
8x10x18	5	BASE	18	18	19	19	19	19	19	19
		HY	8	8	8	8	8	8	8	8
8x10x22	5	BASE	19	19	19	19	19	19	19	19
		HY	8	8	8	8	8	8	8	8
10x10x15	5	BASE	19	19	19	19	19	19	19	19
		HY	11	11	11	11	11	11	11	11
10x10x22	6	BASE								21
		HY								10
10x12x22	5	BASE	19	19	19	19	19	19	19	19
		HY	10	10	10	10	10	10	10	10
10x12x22	6	BASE	19	19	19	19	19	19	19	19
		HY	8	8	8	8	8	8	8	8
12x12x22	6	BASE								21
		HY								10
12x14x22A	5	BASE	19	19	19	19	19	19	19	19
		HY	10	10	10	10	10	10	10	10
12x14x22A	6	BASE	19	19	19	19	19	19	19	19
		HY	8	8	8	8	8	8	8	8
12x14x22B	5	BASE	19	19	19	19	19	19	19	19
		HY	10	10	10	10	10	10	10	10
12x14x22B	6	BASE	19	19	19	19	19	19	19	19
		HY	8	8	8	8	8	8	8	8
14x14x22A	6	BASE								21
		HY								10
16x16x20	6	BASE	21	21	21	21	21	21	21	21
		HY	11 1/2	11 1/2	11 1/2	11 1/2	11 1/2	11 1/2	11 1/2	11 1/2

NOTES:  
 1. ALL DIMENSIONS IN INCHES.  
 2. NOT FOR CONSTRUCTION PURPOSES UNLESS CERTIFIED.