

530 SERIES REPAIR PARTS INDEX

PARTS LISTED ARE FOR STANDARD PUMPS WITH SOME MODIFICATIONS SUCH AS PUMP BEARINGS, STUFFING BOXES AND HIGH THRUST BEARINGS. SEMI-OPEN IMPELLERS AND THEIR MATCHING CASINGS HAVE DIFFERENT PART NUMBERS.

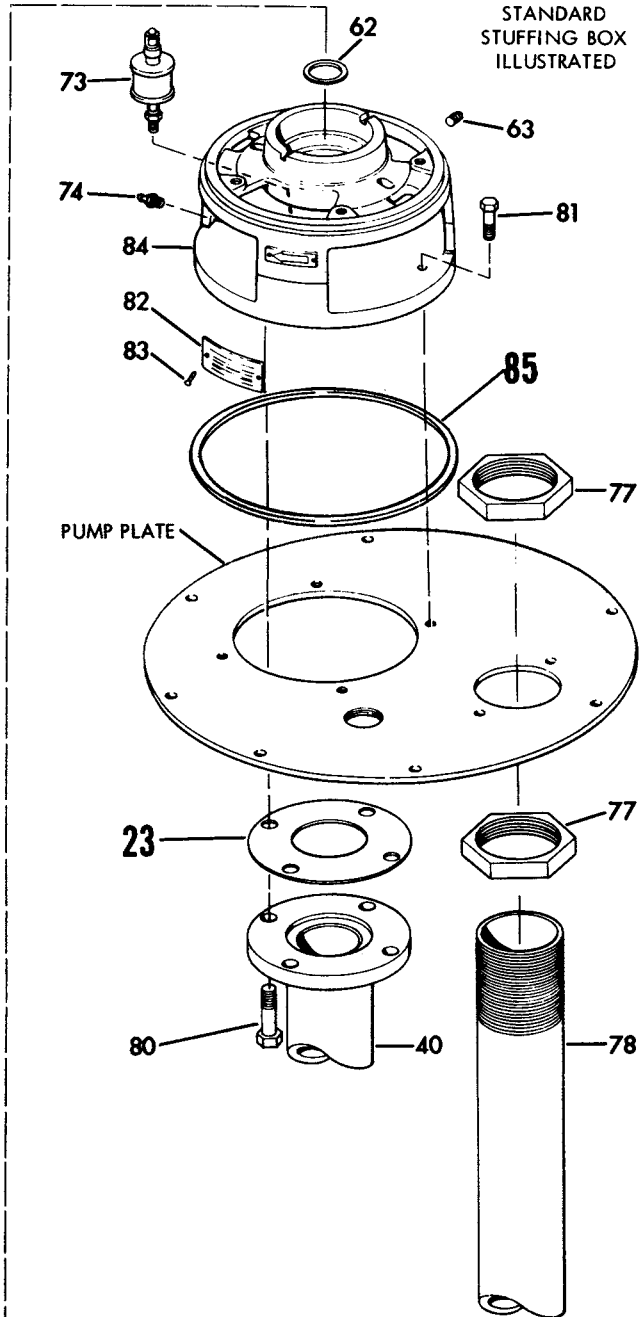
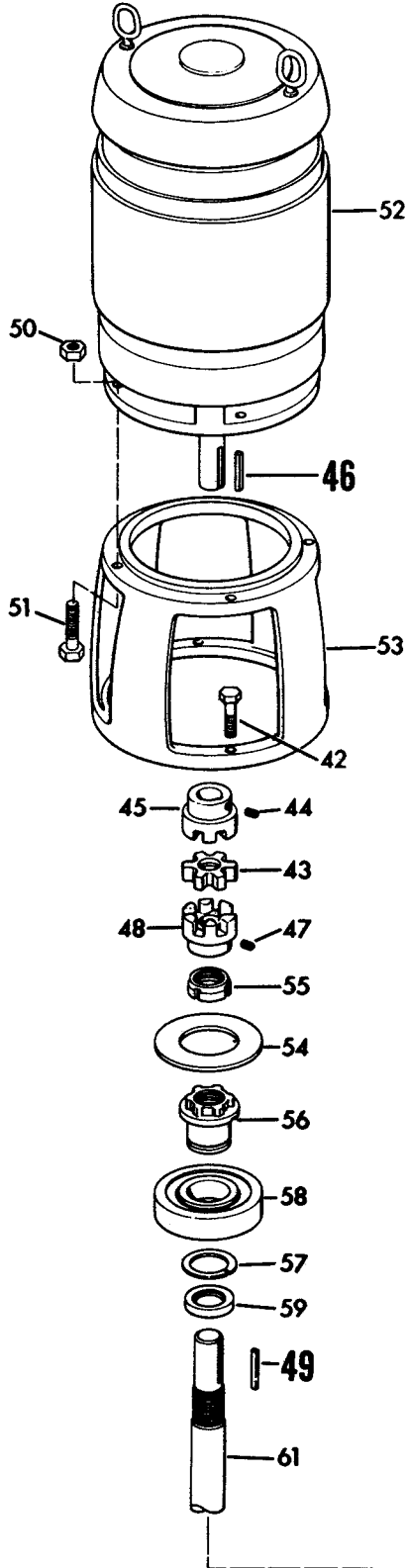
SHAFT SIZE	PUMP SIZE	PAGE
1-3/16	1 x 7 THRU 4 x 7 1 x 9 AND 1½ x 9	6-9
1-7/16	2 x 9 THRU 6 x 9 1½ x 12 THRU 3 x 12	10-13

WHEN PART NUMBERS ARE NOT SHOWN, ORDER BY PIECE NUMBER AND DESCRIPTION.
 PIECE NO.

- 22 - A ROD GUIDE IS REQUIRED WITH ALL REPLACEMENT COVERS. PC NO. 22A.
- 26 - STANDARD PUMP BEARING IS LISTED. SEE PART NUMBERS 28 THRU 37 FOR SPECIAL OPTION BEARINGS. ALL PUMPS FOR 10'6" PIT DEPTH AND DEEPER ARE MADE WITH RELIEF TYPE PUMP BEARING.
- 27, 31, 32 - ON PUMPS BEFORE APRIL 1978, THE BEARING HOUSING (27), RING (31),
 33, 87 BUSHINGS (32 & 33) AND LANTERN RINGS (87) MUST ALL BE REPLACED AT THE SAME TIME FOR CUTLESS RUBBER BEARINGS.
- 39 - ONE SET OF FOUR (4) CAPSCREWS AND NUTS REQUIRED FOR EACH GUIDE BEARING JOINT.
- 40 - ONE SUPPORT PIPE IS REQUIRED FOR PIT DEPTHS UP TO 6'-0".
 TWO SUPPORT PIPES ARE REQUIRED FOR PIT DEPTHS 6'-6" TO 11'-0".
 THREE SUPPORT PIPES ARE REQUIRED FOR PIT DEPTHS 11'-6" TO 16'-0".
- 56, 58 - HIGH THRUST BEARINGS ARE STANDARD ON 1½ x 12 THRU 3 x 12 PUMPS
 58A WHEN BUILT WITH SEMI-OPEN IMPELLERS. PUMPS WITH ENCLOSED IMPELLERS ARE BUILT WITH THE STANDARD THRUST BEARING.
- 60 - PIT DEPTHS TO 11'-6" REQUIRE ONE PUMP SHAFT (61).
- 61 - PIT DEPTHS 12'-0" TO 17'-6" REQUIRE ONE PUMP SHAFT (61C), ONE HEAD SHAFT (61A) AND ONE LINE COUPLING (60).

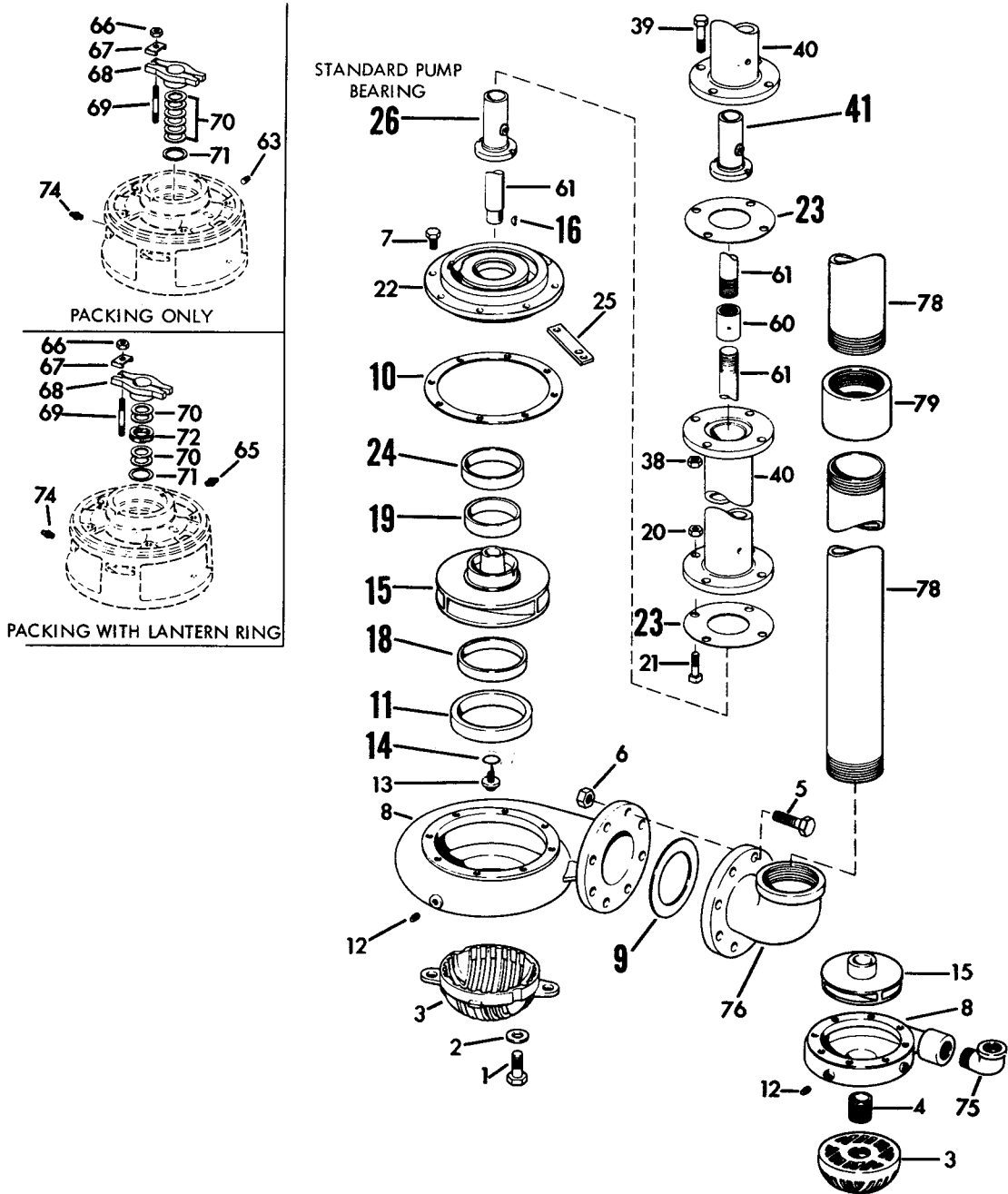
530 SERIES

MODEL 531A-532A PIECE NUMBERS



530 SERIES

MODEL 531A-532A PIECE NUMBERS



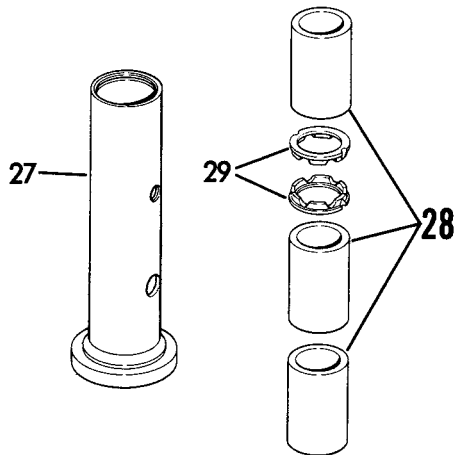
NOTE: Recommended spare parts shown in bold face type.

530 SERIES

MODEL 531A-532A PIECE NUMBERS

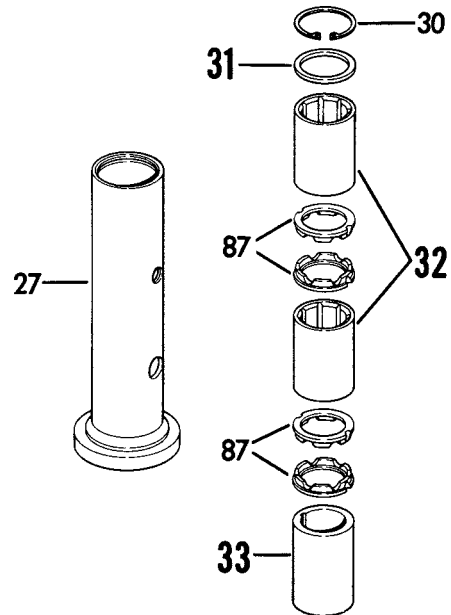
OPTIONAL RELIEF TYPE BEARINGS

GRAPHITAR



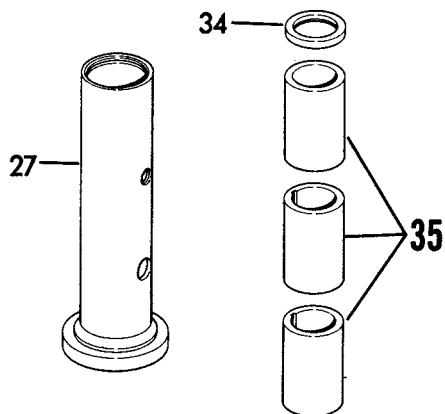
27A-COMPLETE ASSEMBLY

CUTLESS RUBBER



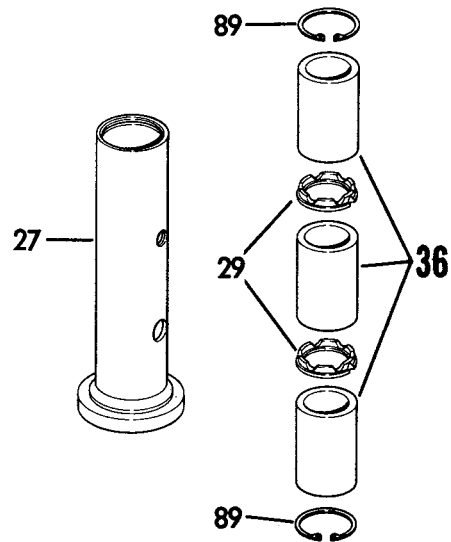
27B-COMPLETE ASSEMBLY

METAL BUSHING*



27C-COMPLETE ASSEMBLY

TEFLON



27D-COMPLETE ASSEMBLY

*Standard for pump settings over 10 feet.

530 SERIES

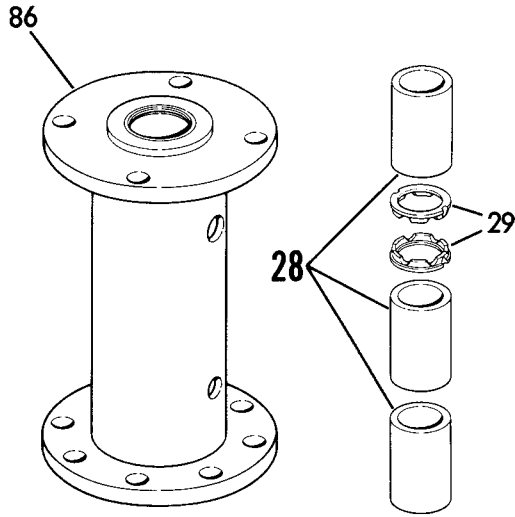
SECTION 530P PAGE 5
DATED NOVEMBER 1993
SUPERSEDES PAGE 5
DATED NOVEMBER 1988

MODEL 531A-532A

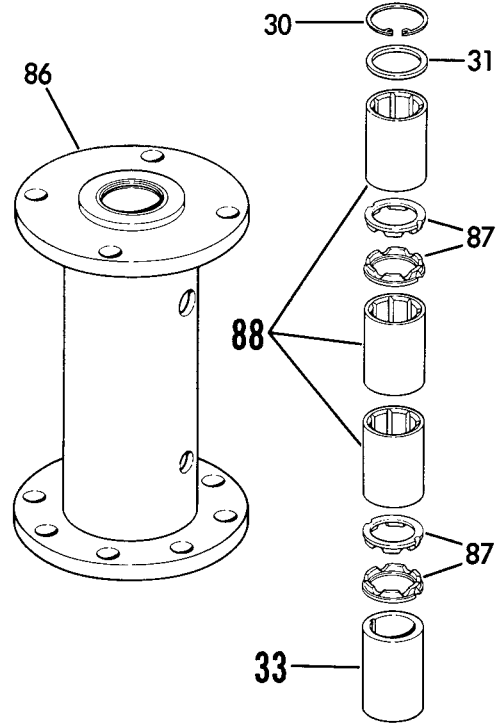
PIECE NUMBERS

OPTIONAL SPOOL TYPE BEARINGS

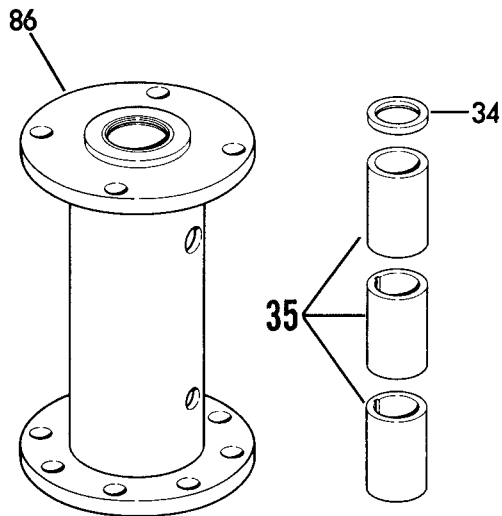
GRAPHITAR



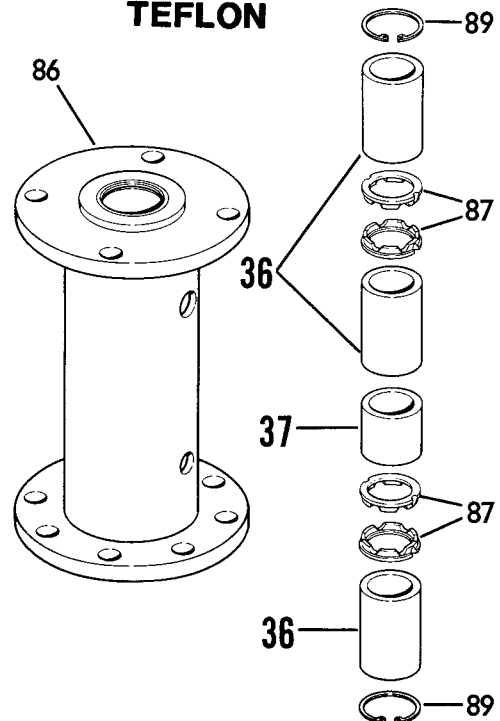
CUTLESS RUBBER



METAL BUSHING



TEFLON



530 SERIES
 MODELS 531A-532A
 1x7 - 4x7 - 1x9 - 1½x9

SECTION 530P PAGE 7
 DATED NOVEMBER 1993
 SUPERSEDES PAGE 7
 DATED NOVEMBER 1988

PARTS LIST

PC. NO.	DESCRIPTION	QTY	PART NO.	MATERIAL				PC. NO.	DESCRIPTION	QTY	PART NO.	MATERIAL				
				B.F.	A.B.	A.I.	S.S.					B.F.	A.B.	A.I.	S.S.	
15	IMPELLER (MACH. FOR OPT.RING #'S								OPTIONAL RELIEF TYPE BEARINGS - COMPLETE ASSY							
		18 & 19, IF REQ'D)						BEFORE MARCH 1986								
	1½x7	1	443-0408	208	208	010	104	27A	GRAPHITAR	1	032-0680	NOT				
	1½x7	1	443-0410	208	208	010	104	27B	CUTLESS RUBBER	1	032-0679	AVAILABLE				
	2x7A	1	443-0412	208	208	010	104	27C	METAL BUSHING	1	032-0681	USE NEW				
	2x7B	1	443-0416	208	208	010	104	27D	TEFLON	1	032-0682	DESIGN				
	2½x7A	1	443-1775	208	208	010	104	28	BUSHING	3	136-1171	540	540	540	540	
	2½x7B	1	443-0418	208	208	010	104	29	LANTERN RING	1	676-1680	512	512	512	512	
	4x7A	1	443-0426	208	208	010	104	30	SNAP RING	1	676-0220	088	104	088	104	
	4x7B	1	443-0424	208	208	010	104	31	RETAINING RING	1	676-1996	079	190	079	104	
	1½x9A	1	443-0434	208	208	010	104	32	BUSHING	2	136-1378	457	457	457	457	
	1½x9B	1	443-0432	208	208	010	104	33	BUSHING	1	136-1173	208	208	010		
	1½x9A	1	443-0438	208	208	010	104	34	SEAL	1	712-0069	653	653	653		
	1½x9B	1	443-0436	208	208	010	104	35	BUSHING	3	136-1173	208	208	010		
16	IMPELLER KEY	1	472-0010	087	104	087	104	36	BUSHING	3	136-1591	522	522	522	522	
18	IMP. WEAR RING (OPTIONAL)							37	BUSHING	1	136-1173	208	208	010		
		1½x7	1	676-1145	208	208	010	104		AFTER MARCH 1986						
		1½x7	1	676-1146	208	208	010	104	27A	GRAPHITAR	1	032-0680	644	643	642	646
		2, 2½x7A, 7B	1	676-1133	208	208	010	104	27B	CUTLESS RUBBER	1	032-0679	644	643	642	646
		4x7A, 7B	1	676-1140	208	208	010	104	27C	METAL BUSHING	1	032-0681	644	643	642	
		1½x9	1	676-1145	208	208	010	104	27D	TEFLON	1	032-0682	644	643	642	646
		1½x9A, 9B	1	676-1146	208	208	010	104	28	BUSHING	1	136-1171	540	540	540	540
19	IMP. WEAR RING (OPTIONAL)							32	BUSHING	2	136-1616	486	486	486	486	
		2, 2½, 4x7, A, B	1	676-1133	208	208	010	104	33	BUSHING	1	136-1173	208	208	010	104
20	NUT	4	544-0115	080	190	080	104	35	BUSHING	3	136-1173	208	208	010		
21	BOLT 7"	4	100-0507	087	190	087	104	36	BUSHING	3	136-1614	485	485	485	485	
		9"	4	100-0511	087	190	087	104	37	BUSHING	1	136-1624	485	485	485	485
22	COVER 1x7-4x7	1	260-0019	010	208	010	104	38	NUT	4	544-0115	080	190	080		
		1x9, 1½x9, 1½x9	1	260-0020	010	208	010	104	39	CAPSCREW	4	168-0564	080	080	080	
23	GASKET		364-1021	588	588	588	588	40	SUPPORT PIPE		REFER TO	FACTORY				
24	CASE RING	1	676-1148	208	208	010	104	41	GUIDE BEARING		136-1405	208	208	208		
		ALL OTHER SIZES		NOT REQUIRED					42	CAPSCREW	4	168-0492	080	080	080	
25	FLOAT ROD GUIDE (REQ'D WHEN #22 IS ORDERED)							43	COUPLING INSERT		REFER TO	SECTION	1000P			
		1	396-0010	087	208	087	087	44	SETSCREW		REFER TO	SECTION	1000P			
26	PUMP BEARING							45	COUPLING HALF		REFER TO	SECTION	1000P			
		1	136-1405	208	208	010		46	COUPLING KEY		REFER TO	FACTORY				
27	BEARING HOUSING							47	SETSCREW		REFER TO	SECTION	1000P			
		1	260-0701	087	208	087	104	48	COUPLING HALF		REFER TO	SECTION	1000P			
								49	COUPLING KEY	1	472-0250	087	087	087		
								50	NUT		REFER TO	FACTORY				

530 SERIES
 MODELS 531A-532A

2x9 - 6x9 - 1 1/2x11 - 5x11 - 1 1/2x12 - 3x12

PARTS LIST

PC. NO.	DESCRIPTION	QTY	PART NO.	MATERIAL			
				B.F.	A.B.	A.I.	S.S.
1	CAPSCREW						
	2x9-3x9 A, B	2	168-0582	080	190	080	104
	2x11-3x11	2	168-0582	080	190	080	104
	4x9 A, B	2	168-0566	080	190	080	104
	5x9-6x9	2	168-0632	080	190	080	104
	4x11-5x11	2	168-0652	080	190	080	109
	1 1/2x12-1 1/2x11	NOT REQUIRED					
	2x12-3x12	2	168-0582	080	190	080	104
2	WASHER						
	2x9-4x9 A, B	2	908-0116	360	190	360	104
	2x11-3x11	2	908-0116	360	190	360	104
	5x9-6x9	2	908-0117	360	190	360	104
	4x11-5x11	2	908-0117	360	190	360	104
	1 1/2x12 & 1 1/2x11	NOT REQUIRED					
	2x12-3x12	2	908-0116	360	190	360	104
3	STRAINER 2x9	1	796-0163	010	208	010	104
	2 1/2x9	1	796-0163	010	208	010	104
	3x9 A, B	1	796-0163	010	208	010	104
	4x9 A, B	1	796-0163	010	208	010	104
	5x9	1	796-0163	010	208	010	104
	6x9	1	796-0163	010	208	010	104
	1 1/2x12 & 1 1/2x11	1	796-0103	010	208	010	104
	2x12	1	796-0163	010	208	010	104
	2 1/2x12	1	796-0163	010	208	010	104
	3x12	1	796-0163	010	208	010	1094
4	NIPPLE 1 1/2x12 & 1 1/2x11	1	600-1110	387	190	387	104
	2x12-3x12	NOT REQUIRED					
5	CAPSCREW						
	2x9-3x9 A, B	4	168-0568	080	190	080	104
	2x11	4	168-0568	080	190	080	104
	4x9 A, B & 4x11	8	168-0570	080	190	080	104
	5x9 & 5x11	2	168-0634	080	190	080	104
	5x9	6	168-0642	080	190	080	104
	6x9	2	168-0634	080	190	080	104
	6x9	6	168-0646	080	190	080	104
	1 1/2x12, 1 1/2x11	NOT REQUIRED					
	2x12-3x12 & 3x11	4	168-0568	080	190	080	104
6	NUT						
	2x9-3x9 A, B & 2x11	4	544-0115	080	190	080	104
	4x9 A, B & 4x11	8	544-0115	080	190	080	104

PC. NO.	DESCRIPTION	QTY	PART NO.	MATERIAL			
				B.F.	A.B.	A.I.	S.S.
6	NUT (cont. from first column)						
	5x9-6x9 & 5x11	8	544-0117	080	190	080	104
	1 1/2x12 & 1 1/2x11	NOT REQUIRED					
	2x12-3x12	4	544-0115	080	190	080	104
7	CAPSCREW						
	1 1/2x11-5x11	8	168-0490	080	190	080	104
	2x9-6x9	8	168-0487	080	190	080	104
	1 1/2x12-3x12	8	168-0489	080	190	080	104
8	CASING 2x9	1	180-2152	010	208	010	104
	2 1/2x9	1	180-2153	010	208	010	104
	3x9 A, B	1	180-2155	010	208	010	104
	4x9A	1	180-2156	010	208	010	104
	4x9B	1	180-2157	010	208	010	104
	6x9	1	180-2159	010	208	010	104
	1 1/2x12	1	180-2161	010	208	010	104
	2x12	1	180-2163	010	208	010	104
	2 1/2x12	1	180-2164	010	208	010	104
	3x12	1	180-2166	010	208	010	104
	1 1/2x2x11	1	180-2353	010	208	010	104
	2x3x11	1	180-2354	010	208	010	104
	3x4x11	1	180-2355	010	208	010	104
4x5x11	1	180-2356	010	208	010	104	
5x6x11	1	180-2357	010	208	010	104	
9	GASKET						
	2x9	1	364-0603	603	603	603	603
	2 1/2x9	1	364-0604	603	603	603	603
	3x9 A, B	1	364-0605	603	603	603	603
	4x9 A, B & 4x11	1	364-0607	603	603	603	603
	5x9 & 5x11	1	364-0608	603	603	603	603
	6x9	1	364-0609	603	603	603	603
	1 1/2x12 & 1 1/2x11	NOT REQUIRED					
	2x12 & 2x11	1	364-0603	603	603	603	603
	2 1/2x12	1	364-0604	603	603	603	603
3x12 & 3x11	1	364-0605	603	603	603	603	
10	GASKET						
	2x9-6x9	1	364-1015	603	603	603	603
	1 1/2x11-5x11	1	364-2109	603	603	603	603
	1 1/2x12-3x12	1	364-1016	603	603	603	603
11	CASE RING						
	1 1/2x2x11	1	676-1151	208	208	010	104

530 SERIES

MODELS 531A-532A

2x9 - 6x9 - 1 1/2x11 - 5x11 - 1 1/2x12 - 3x12

SECTION 530P PAGE 11
DATED NOVEMBER 1993
SUPERSEDES PAGE 11
DATED NOVEMBER 1988

PARTS LIST

PC. NO.	DESCRIPTION	QTY	PART NO.	MATERIAL			
				B.F.	A.B.	A.I.	S.S.
	CASE RING (cont. from p:10)						
	2x3x11	1	676-1152	208	208	010	104
	3x4x11	1	676-1154	208	208	010	104
	4x5x11	1	676-1155	208	208	010	104
	5x6x11	1	676-1684	208	208	010	104
	2x9	1	676-1152	208	208	010	104
	2 1/2x9	1	676-1152	208	208	010	104
	3x9 A, B	1	676-1154	208	208	010	104
	4x9A	1	676-1154	208	208	010	104
	4x9B	1	676-1155	208	208	010	104
	5x9	1	676-1155	208	208	010	104
	6x9	1	676-1155	208	208	010	104
	1 1/2x12	1	676-1151	208	208	010	104
	2x12	1	676-1152	208	208	010	104
	2 1/2x12	1	676-1152	208	208	010	104
	3x12	1	676-1154	208	208	010	104
12	PIPE PLUG	3	600-0002	087	190	087	104
13	IMPELLER NUT	1	544-0040	104	104	104	104
15	IMPELLER						
	1 1/2x2x11	1	443-2513	208	208	010	104
	2x3x11	1	443-2399	208	208	010	104
	3x4x11	1	443-2400	208	208	010	104
	4x5x11	1	443-2401	208	208	010	104
	5x6x11	1	443-2402	208	208	010	104
	2x9	1	443-0443	208	208	010	104
	2 1/2x9	1	443-0447	208	208	010	104
	3x9A	1	443-1768	208	208	010	104
	3x9B	1	443-1764	208	208	010	104
	4x9A	1	443-1752	208	208	010	104
	4x9B	1	443-0459	208	208	010	104
	5x9	1	443-0463	208	208	010	104
	6x9	1	443-0467	208	208	010	104
	1 1/2x12	1	443-1725	208	208	010	104
	2x12	1	443-1726	208	208	010	104
	2 1/2x12	1	443-1727	208	208	010	104
	3x12	1	443-1728	208	208	010	104
15	IMPELLER (MACH. FOR OPT. RING(S))		#18 AND 19, IF REQUIRED.				
	1 1/2x2x11	1	443-2514	208	208	010	104
	2x3x11	1	443-2427	208	208	010	104

PC. NO.	DESCRIPTION	QTY	PART NO.	MATERIAL			
				B.F.	A.B.	A.I.	S.S.
15	IMPELLER (cont. from first column)						
	3x4x11	1	443-2428	208	208	010	104
	4x5x11	1	443-2429	208	208	010	104
	5x6x11	1	443-2430	208	208	010	104
	2x9	1	443-0444	208	208	010	104
	2 1/2x9	1	443-0448	208	208	010	104
	3x9A	1	443-1769	208	208	010	104
	3x9B	1	443-1765	208	208	010	104
	4x9A	1	443-1753	208	208	010	104
	4x9B	1	443-0460	208	208	010	104
	5x9	1	443-0464	208	208	010	104
	6x9	1	443-0468	208	208	010	104
	1 1/2x12	1	443-1739	208	208	010	104
	2x12	1	443-1740	208	208	010	104
	2 1/2x12	1	443-1741	208	208	010	104
	3x12	1	443-1742	208	208	010	104
16	IMPELLER KEY	1	472-0019	087	104	087	104
18	IMP. WEAR RING (OPTIONAL)						
	5x6x11	1	676-1143	208	208	010	104
	2x9, 2 1/2x9	1	676-1133	208	208	010	104
	3x9A, B, 4x9A	1	676-1140	208	208	010	104
	4x9B, 6x9 & 4x11	1	676-1141	208	208	010	104
	1 1/2x12 & 1 1/2x11	1	676-1146	208	208	010	104
	2x12, 2 1/2x12 & 2x11	1	676-1133	208	208	010	104
	3x12 & 3x11	1	676-1140	208	208	010	104
19	IMP. WEAR RING (OPTIONAL)						
	2x9, 2 1/2x9 & 2x11	1	676-1133	208	208	010	104
	3x9A, B, 3x11, 4x9A, B	1	676-1156	208	208	010	104
	6x9	1	676-1156	208	208	010	104
	1 1/2x12 & 1 1/2x11		NOT REQUIRED				
	2x12, 2 1/2x11	1	676-1133	208	208	010	104
	3x12, 4x11 & 5x11	1	676-1156	208	208	010	104
20	NUT						
	2x9-3x9-2x11-3x11	4	544-0115	080	190	080	104
	4x9-6x9-4x11-5x11	8	544-0115	080	190	080	104
	1 1/2x12-3x12-1 1/2x11	4	544-0115	080	190	080	104
21	BOLT						
	2x9-3x9-1 1/2x11-2x11	4	100-0511	087	190	087	104
	3x11	4	100-0511	087	190	087	104
	4x9-6x9-4x11-5x11	8	100-0511	087	190	087	104

530 SERIES
 MODELS 531A-532A

2x9 - 6x9 - 1 1/2x11 - 5x11 - 1 1/2x12 - 3x12

PARTS LIST

PC. NO.	DESCRIPTION	QTY	PART NO.	MATERIAL				
				B.F.	A.B.	A.I.	S.S.	
22	COVER							
	1 1/2x11-5x11	1	260-0039	010	208	010	104	
	2x9-6x9	1	260-0020	010	208	010	104	
	1 1/2x12-3x12	1	260-0021	010	208	010	104	
23	GASKET		364-1021	588	588	588	588	
24	CASE RING 2x9	1	676-1148	010	208	010	104	
	2 1/2x9	1	676-1148	010	208	010	104	
	3x9A	1	676-1149	208	208	010	104	
	3x9B	1	676-1149	208	208	010	104	
	4x9A	1	676-1149	208	208	010	104	
	4x9B & 4x11	1	676-1149	208	208	010	104	
	5x9 & 5x11	1	676-1149	208	208	010	104	
	6x9	1	676-1149	208	208	010	104	
	1 1/2x12		NOT REQUIRED					
	2x12 & 2x11	1	676-1148	208	208	010	104	
	2 1/2x12	1	676-1148	208	208	010	104	
	3x12 & 3x11	12	676-1149	208	208	010	104	
25	FLOAT ROD GUIDE (REQ. WHEN #22 IS ORDERED)	1	396-0010	087	208	087	087	
26	PUMP BEARING	1	136-1402	208	208	010		
	BEARING HOUSING	1	260-0701	087	208	087	104	
	OPTIONAL RELIEF TYPE BEARINGS-COMplete ASSY. BEFORE MARCH 1986							
27A	GRAPHITAR	1	032-1246		NOT			
27B	CUTLESS RUBBER	1	032-1245		AVAILABLE			
27C	METAL BUSHING	1	032-1247		USE NEW			
27D	TEFLON	1	032-1248		DESIGN			
28	BUSHING	3	136-1170	540	540	540	540	
29	LANTERN RING	1	676-1681	512	512	512	512	
30	SNAP RING	1	676-0220	088	104	088	104	
31	RETAINING RING	1	676-1996	079	190	079	104	
32	BUSHING	2	136-1379	457	457	457	457	
33	BUSHING	1	136-1172	208	208	010	104	
34	SEAL	1	712-0047	653	653	653		
35	BUSHING	3	136-1172	208	208	010		
36	BUSHING	3	136-1585	522	522	522	522	
37	BUSHING	1	136-1172	208	208	010	104	
			AFTER MARCH 1986					
27A	GRAPHITAR	1	032-1246	644	643	642	646	
27B	CUTLESS RUBBER	1	032-1245	644	643	642	646	

PC. NO.	DESCRIPTION	QTY	PART NO.	MATERIAL				
				B.F.	A.B.	A.I.	S.S.	
27C	METAL BUSHING	1	032-1247	644	643	642		
27D	TEFLON	1	032-1248	644	643	642	646	
28	BUSHING	1	136-1170	540	540	540	540	
32	BUSHING	2	136-1617	486	486	486	486	
33	BUSHING	1	136-1172	208	208	010	104	
35	BUSHING	3	136-1172	208	208	010		
36	BUSHING	3	136-1615	485	485	485	485	
37	BUSHING	1	136-1625	485	485	485	485	
38	NUT	4	544-0115	080	190	080	104	
39	CAPSCREW	4	168-0564	080	190	080	104	
40	SUPPORT PIPE		REFER TO FACTORY					
41	GUIDE BEARING		136-1402	208	208	010		
42	CAPSCREW	4	168-0490	080	080	080	104	
43	COUPLING INSERT		REFER TO SECTION 1000P					
44	SETSCREW		REFER TO SECTION 1000P					
45	COUPLING HALF		REFER TO SECTION 1000P					
46	COUPLING KEY		REFER TO FACTORY					
47	SETSCREW		REFER TO SECTION 1000P					
48	COUPLING HALF		REFER TO SECTION 1000P					
49	COUPLING KEY	1	472-0250	087	087	087		
50	NUT		REFER TO FACTORY					
51	CAPSCREW		REFER TO FACTORY					
52	MOTOR		REFER TO FACTORY					
53	UPPER HEAD							
	143HP-256HP	1	116-0346	010	010	010	010	
	284HP-326HP	1	116-0347	010	010	010	010	
54	SLINGER	1	764-0401	457	457	457	457	
55	LOCKNUT	1	544-1108	080	080	080	080	
56	BRG. COLLAR (STD.)	1	224-0163	208	208	208	208	
	(HIGH THRUST)	1	224-0161	208	208	208	208	
57	RETAINING RING	1	676-0289	088	088	088	088	
58	BALL BEARING (STD)	1	068-2023	647	647	647	647	
	(HIGH THRUST)	1	068-0311	647	647	647	647	
58A	SEAL							
	(HIGH THRUST)	1	712-0289	087	087	087	087	
59	GREASE SEAL	1	712-0146	653	653	653	653	
60	COUPLING		256-2014	062	104	062	104	
61	SHAFT (ONE PIECE)		REFER TO FACTORY					
61A	HEAD SHAFT							
	(2 OR 3 PIECE)		REFER TO FACTORY					

530 SERIES

MODELS 531A-532A

2x9 - 6x9 - 1 1/2x11 - 5x11 - 1 1/2x12 - 3x12

SECTION 530P PAGE 13
DATED NOVEMBER 1993
SUPERSEDES PAGE 13
DATED NOVEMBER 1988

PARTS LIST

PC. NO.	DESCRIPTION	QTY	PART NO.	MATERIAL			
				B.F.	A.B.	A.I.	S.S.
61B	LINE SHAFT						
	(3 PIECE)		REFER TO FACTORY				
61C	PUMP SHAFT						
	(2 OR 3 PIECE)		REFER TO FACTORY				
62	SLINGER	1	764-1009	478	478	478	478
63	PIPE PLUG	1	600-0002	087	190	087	104
65	GREASE FITTING	1	508-0002	651	651	651	651
66	NUT	2	544-0109	080	190	080	104
67	GLAND CLAMP	2	204-0120	360	190	360	104
68	GLAND	1	372-0220	010	208	010	104
69	STUD	2	808-0112	082	082	082	104
70	PACKING	6	564-0037	802	802	802	802
71	RING	1	676-1232	190	190	087	104
72	LANTERN RING	1	676-1681	512	512	512	512
73	OILER (OPT)	1	552-0102	652	652	652	652
74	GREASE FITTING	1	508-0002	651	651	651	651
75	ELBOW						
	2x9-6x9		NOT REQUIRED				
	1 1/2x12 & 1 1/2x11	1	600-0209	387	190	387	104
	2x12-3x12		NOT REQUIRED				
76	ELBOW 2x9	1	300-0016	010	208	010	104
	2 1/2x9	1	300-0010	010	208	010	104
	3x9 & 3x11	1	300-0011	010	208	010	104
	4x9 & 4x11	1	300-0012	010	208	010	104
	5x9 & 5x11	1	300-0017	010	208	010	104
	6x9	1	300-0015	010	208	010	104
	1 1/2x12		NOT REQUIRED				
	2x12 & 2x11	1	300-0016	010	208	010	104
	2 1/2x12	1	300-0010	010	208	010	104
3x12	1	300-0011	010	208	010	104	
77	LOCKNUT 2x9	2	544-0958	028	190	028	104
	2 1/2x9	2	544-0959	028	190	028	104
	3x9	2	544-0960	028	190	028	104
	4x9	2	544-2037	087	190	087	104
	5x9	2	544-2038	087	190	087	104
	6x9	2	544-2039	087	190	087	104
	1 1/2x12	2	544-0957	028	190	028	104
	2x12	2	544-0958	028	190	028	104
	2 1/2x12	2	544-0959	028	190	028	104
	3x12	2	544-0960	028	190	028	104

PC. NO.	DESCRIPTION	QTY	PART NO.	MATERIAL			
				B.F.	A.B.	A.I.	S.S.
78	DISCHARGE PIPE		REFER TO FACTORY				
79	COUPLING		REFER TO FACTORY				
80	CAPSCREW	4	168-0562	080	190	080	104
81	CAPSCREW	4	168-0388	080	080	080	080
82	NAMEPLATE	1	532-0045	114	114	114	114
83	DRIVE SCREW	2	708-0013	365	365	365	365
84	LOWER HEAD	1	116-0439	010	010	010	010
		1	116-0440	010	010	010	010
		4	168-0378	080	080	080	080
85	GASKET	1	364-1254	481	481	481	481
BEFORE MARCH 1986							
86	SPOOL HOUSING	1	260-0726	087	087	087	087
87	LANTERN RING	2	676-1681	512	512	512	512
88	BUSHING	3	136-1379	457	457	457	457
89	SNAP RING	2	676-0220	088	104	088	104
AFTER MARCH 1986							
86	SPOOL HOUSING	1	260-0726	087	087	087	104
88	BUSHING	3	136-1617	486	486	486	486
PARTS NOT SHOWN ON EXPLODED VIEW							
	SWITCH STAND		REFER TO				
	FLOAT ROD		SECTION 1020P				
	FLOAT STOPS		FOR FLOAT				
	FLOAT		SWITCH ASSY.				
CASING FOR SEMI-OPEN IMPELLER							
	2x9	1	180-2193	010	208	010	104
	2 1/2x9	1	180-2154	010	208	010	104
	3x9A	1	180-2194	010	208	010	104
	4x9B	1	180-2158	010	208	010	104
	6x9	1	180-2160	010	208	010	104
	1 1/2x12	1	180-2162	010	208	010	104
	2x12	1	180-2195	010	208	010	104
	2 1/2x12	1	180-2165	010	208	010	104
	3x12	1	180-2165	010	208	010	104
SEMI-OPEN IMPELLER							
	2x9	1	443-2055	208	208	010	104
	2 1/2x9	1	443-2057	208	208	010	104
	3x9A	1	443-2059	208	208	010	104
	4x9B	1	443-2061	208	208	010	104

(continued on next page)

