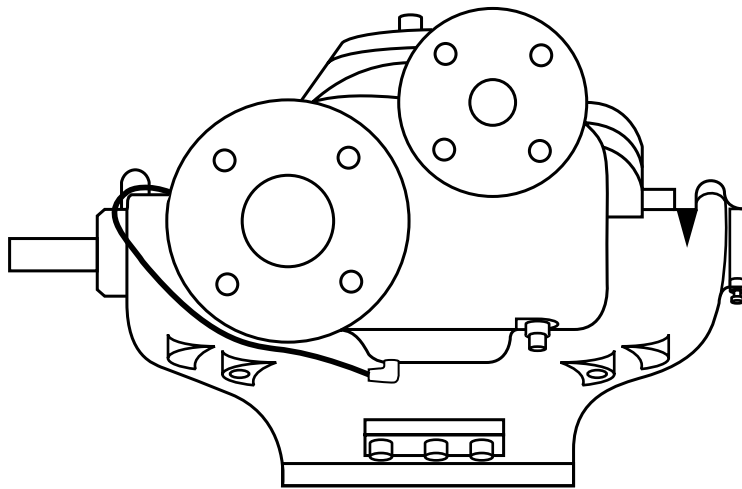


430B SERIES REPAIR PARTS INDEX



READ AND UNDERSTAND THE PUMP AND MOTOR
INSTRUCTIONS BEFORE ATTEMPTING TO INSTALL,
DISASSEMBLE OR REPAIR THE PUMP

**430 SERIES
MODEL 431B**

TABLE OF CONTENTS

PUMP MODEL	POWER SERIES	DESCRIPTION	PAGE
431	2	1-1/2 x 3 x 9	4, 5
431	2	2 x 4 x 9	4, 5
431	3A	1-1/2 x 3 x 11	6, 7
431	3A	2 x 4 x 1	6, 7

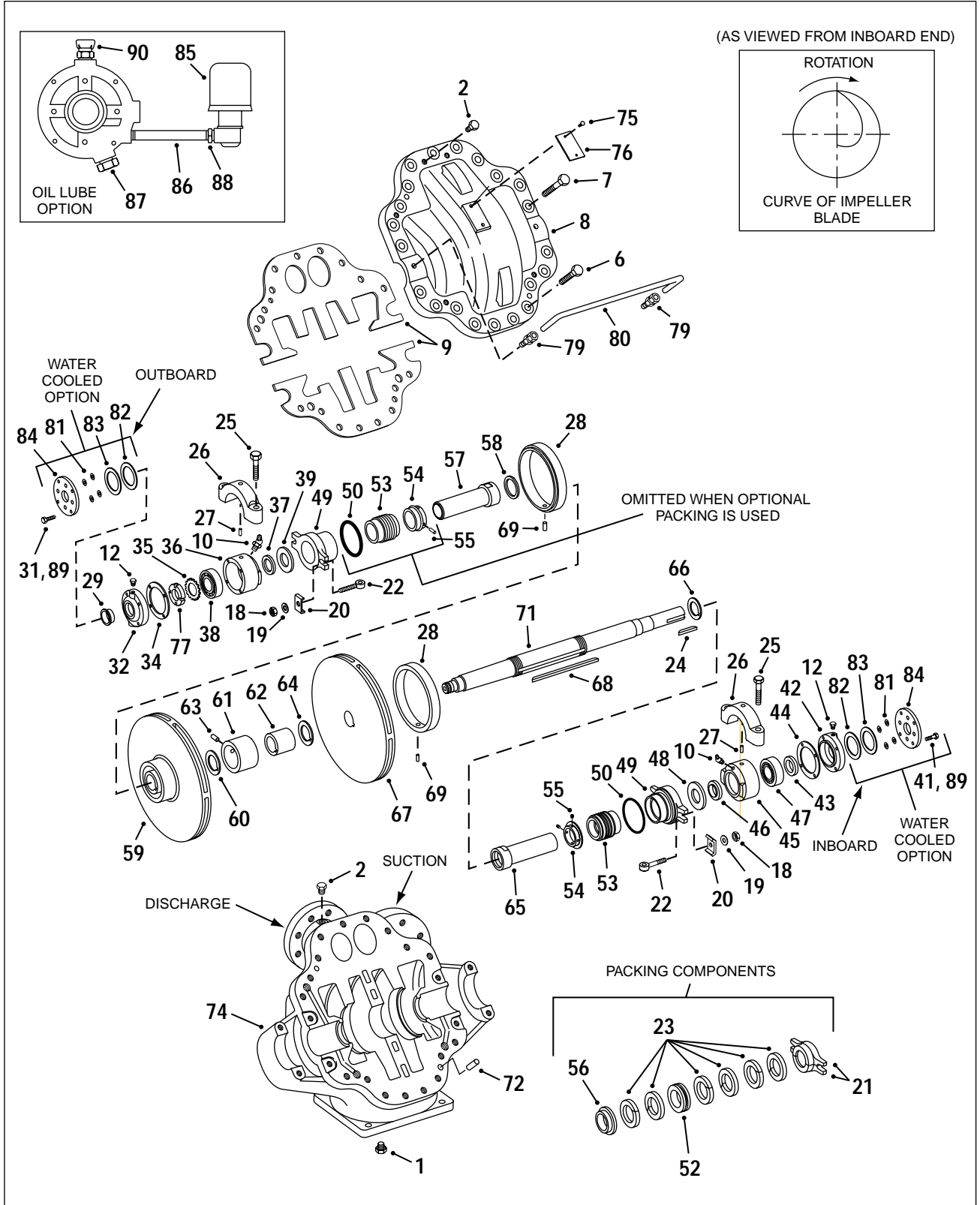
430B SERIES

MODEL 431B

PIECE NUMBERS

SECTION 430P PAGE 3
DATED NOVEMBER 1999

SUPERSEDES 430P PAGE 3
DATED APRIL 1996



430B SERIES P.S. #2
MODEL 431B
1-1/2 x 3 x 9 - 2 x 4 x 9
PARTS LIST

PC. NO.	DESCRIPTION	QTY	PART NO.	MATERIAL		
				B.F.	A.B.	A.I.
1	PLUG	5	600-0004	028	028	028
2	PLUG	5	600-0002	087	087	087
6	CAPSCREW	17	168-0566	082	082	082
7	CAPSCREW	4	168-0494	082	082	082
8	UPPER CASING		INCLUDED WITH NO. 74			
9	GASKET	1	364-1339	598	598	598
10	GREASE FITTING	2	508-0015	651	651	651
12	PLUG	2	600-0001	087	087	087
12A	PLUG+	6	600-0003	087	087	087
18	NUT	4	544-0109			080
19	WASHER	4	908-0112			080
20	CLAMP	4	204-0120			360
21	GLAND	2	372-0225	010	010	010
22	SWING BOLT	4	100-2011			360
22A	SWING BOLT ASSY. (18, 19, 20, 22)	4	099-0014	644	644	
23	PACKING SET (6 RINGS)	2	564-3031	806	806	806
24	KEY	1	472-0247	087	087	087
25	CAPSCREW	4	168-0496	082	082	082
26	BEARING CAP		INCLUDED WITH NO. 74			
27	PIN	2	592-0361	360	360	360
28	CASE RING 1-1/2x3x9	2	676-1007	208	208	010
	2x4x9	2	676-1015	208	208	010
29	PROTECTOR	1	624-0080	087	087	087
31	CAPSCREW (STD)	4	168-0015	082	082	082
	WATER COOL (OPT)+	4	168-0025	082	082	082
32	CARTRIDGE CAP STANDARD	1	164-0531	010	010	010
	OIL LUBE**	1	164-0579	010	010	010
	WATER COOLED+	1	164-0580	010	010	010
34	GASKET	1	364-1309	614	614	614
35	LOCK WASHER	1	908-0406	080	080	080
36	CARTRIDGE	1	176-0065	010	010	010
37	GREASE SEAL	1	712-6324	653	653	653
	OIL SEAL**	1	712-0053	653	653	653
38	BEARING	1	068-0454	647	647	647
39	SLINGER SEAL	1	764-1017	478	478	478
	SLINGER, PACKED (OPT)	1	764-0002	208	208	208
41	CAPSCREW (STD)	4	168-0015	082	082	082
	WATER COOL (OPT)+	4	168-0025	082	082	082

** USE WITH OIL LUBRICATED BEARING OPTION ONLY

PC. NO.	DESCRIPTION	QTY	PART NO.	MATERIAL		
				B.F.	A.B.	A.I.
42	CARTRIDGE CAP STANDARD	1	164-0531	010	010	010
	OIL LUBE**	1	164-0579	010	010	010
	WATER COOLED+	1	164-0580	010	010	010
43	GREASE SEAL	1	712-0231	653	653	653
	OIL SEAL**	1	712-0016	653	653	653
44	GASKET	1	364-1309	614	614	614
45	CARTRIDGE	1	176-0065	010	010	010
46	GREASE SEAL	1	712-6324	653	653	653
	OIL SEAL**	1	712-0053	653	653	653
47	BEARING	1	068-1907	647	647	647
48	SLINGER, SEAL	1	764-1017	478	478	478
	SLINGER, PACKED (OPT)	1	764-0002	208	208	208
49	GLAND	2	372-0287	010	208	010
50	O-RING	2	364-0420	474	474	474
52	LANTERN RING	2	676-1698	512	512	512
53	SEAL, STD	2	712-0910	749	749	749
54	COLLAR	2	224-0174	208	208	010
55	SETSCREW	4	724-0081	104	104	104
56	BUSHING	2	136-1411	208	208	010
57	SLEEVE WITH "O" RING PC. NO. 58 (NOTE 1)					
	SLEEVE (SEALS)	1	756-0642	644	644	623
	SLEEVE (PACKING)	1	756-0642	644	644	646
58	O-RING	1	364-0368	474	474	474
59	IMPELLER 1-1/2x3x9	1	443-2088	225	010	010
	2x4x9	1	443-2090	225	010	010
60	O-RING	1	364-0368	474	474	474
61	BUSHING	1	136-1320	226	226	010
62	SLEEVE WITH "O" RINGS PC. NO. 60 AND 64 (NOTE 2)					
	SLEEVE	1	756-0632	644	644	642
63	PIN	1	592-0361	107	107	107
64	O-RING	1	364-0368	474	474	474
65	SLEEVE WITH "O" RING PC. NO. 66 (NOTE 1)					
	SLEEVE (SEALS)	1	756-0642	644	644	623
	SLEEVE (PACKING)	1	756-0642	644	644	646
66	O-RING	1	364-0368	474	474	474

+ USE WITH WATER COOLED BEARING CAP OPTION ONLY
(REFER PC. NO. 91)

430B SERIES P.S. #3A
MODEL 431B
1-1/2 x 3 x 11 - 2 x 4 x 11
PARTS LIST

PC. NO.	DESCRIPTION	QTY	PART NO.	MATERIAL		
				B.F.	A.B.	A.I.
1	PLUG 1-1/2x3x11	4	600-0004	028	028	028
		1	600-0006	028	028	028
	2x4x11	4	600-0004	028	028	028
		1	600-0007	028	028	028
2	PLUG	10	600-0002	087	087	087
6	CAPSCREW	22	168-0568	082	082	082
7	CAPSCREW	6	168-0566	082	082	082
8	UPPER CASING		INCLUDED WITH NO. 74			
9	GASKET	1	364-2122	598	598	598
10	GREASE FITTING	2	508-0001	651	651	651
12	PLUG	2	600-0001	087	087	087
12A	PLUG+	6	600-0003	087	087	087
18	NUT	4	544-0109			080
19	WASHER	4	908-0112			080
20	CLAMP	4	204-0120			360
21	GLAND	2	372-0226	010	010	010
22	SWING BOLT	4	100-2017			360
22A	SWING BOLT ASSY. (18, 19, 20, 22)	4	099-0017	644	644	
23	PACKING SET (6 RINGS)	2	564-3032	806	806	806
24	KEY	1	472-0323	087	087	087
25	CAPSCREW	4	168-0496	082	082	082
26	BEARING CAP		INCLUDED WITH NO. 74			
27	PIN	2	592-0361	360	360	360
28	CASE RING	2	676-2109	208	208	010
29	PROTECTOR	1	624-0081	087	087	087
31	CAPSCREW (STD) WATER COOL (OPT)+	4	168-0260	082	082	082
		4	168-0280	082	082	082
32	CARTRIDGE CAP STANDARD OIL LUBE** WATER COOLED+	1	164-0581	010	010	010
		1	164-0581	010	010	010
		1	164-0582	010	010	010
		1	164-0582	010	010	010
34	GASKET	1	364-2123	614	614	614
35	LOCK WASHER	1	908-0406	080	080	080
36	CARTRIDGE	1	176-0077	010	010	010

** USE WITH OIL LUBRICATED BEARING OPTION ONLY

PC. NO.	DESCRIPTION	QTY	PART NO.	MATERIAL		
				B.F.	A.B.	A.I.
37	GREASE SEAL OIL SEAL**	1	712-6326	653	653	653
		1	712-0017	653	653	653
38	BEARING (BACK TO BACK)	2	068-0021	647	647	647
39	SLINGER SEAL SLINGER, PACKED (OPT)	1	764-1020	478	478	478
		1	764-1042	208	208	208
41	CAPSCREW (STD) WATER COOL (OPT)+	4	168-0260	082	082	082
		4	168-0280	082	082	082
42	CARTRIDGE CAP STANDARD & OIL LUBE WATER COOLED+	1	164-0581	010	010	010
		1	164-0582	010	010	010
		1	164-0582	010	010	010
43	GREASE SEAL OIL SEAL**	1	712-6334	653	653	653
		1	712-6471	653	653	653
44	GASKET	1	364-2123	614	614	614
45	CARTRIDGE	1	176-0077	010	010	010
46	GREASE SEAL OIL SEAL**	1	712-6326	653	653	653
		1	712-0017	653	653	653
47	BEARING	1	068-0158	647	647	647
48	SLINGER, SEAL SLINGER, PACKED (OPT)	1	764-1020	478	478	478
		1	764-1042	208	208	208
49	GLAND	2	372-0362	010	208	010
50	O-RING	2	364-0423	474	474	474
52	LANTERN RING	2	676-1699	512	512	512
53	SEAL, STD	2	712-0412	749	749	749
54	COLLAR	2	224-0017	208	208	010
55	SETSCREW	4	724-0081	104	104	104
56	BUSHING	2	136-1412	208	208	010
SLEEVE WITH "O" RING PC. NO. 58 (NOTE 1)						
57	SLEEVE (SEALS) SLEEVE (PACKING)	1	756-0643	644	644	623
		1	756-0643	644	644	646
58	O-RING	1	364-0372	474	474	474
59	IMPELLER 1-1/2X3X11 2X4X11	1	443-2881	225	010	010
		1	443-2883	225	010	010
60	O-RING	1	364-0372	474	474	474
61	BUSHING	1	136-1321	226	226	010
SLEEVE WITH "O" RINGS PC. NO. 60 AND 64 (NOTE 2)						
62	SLEEVE	1	756-0633	644	644	642
63	PIN	1	592-0361	107	107	107

+ USE WITH WATER COOLED BEARING CAP OPTION ONLY
 (REFER PC. NO. 91)



NOTE:
Aurora Pump reserves the right to make revisions to its products and their specifications, and to this bulletin and related information without notice

Aurora Pumps
800 Airport Road
North Aurora, IL 60542
phone: 630-859-7000
fax: 630-859-7060