

AURORA 390 SERIES PUMPS

MULTI-STAGE VERTICAL IN-LINE CENTRIFUGAL PUMP

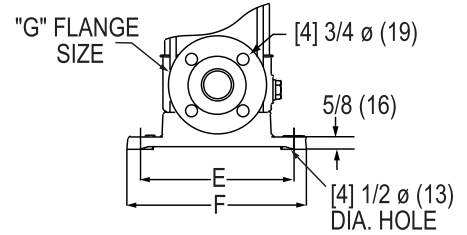
391

MODEL	# OF STAGES	HP 60HZ	HP 50HZ	FRAME	P	AB	AG	DH	WEIGHT [PUMP ONLY]
391-2	2	0.75	.33	56C	7.38 (187)	5.75 (146)	11.82 (300)	11.25 (286)	20 (9)
391-3	3	0.75	.33	56C	7.38 (187)	5.75 (146)	11.82 (300)	12 (305)	21 (9)
391-4	4	1	.5	56C	7.38 (187)	5.75 (146)	11.82 (300)	12.75 (324)	22 (10)
391-5	5	1.5	1	143TC	7.38 (187)	6.19 (157)	11.76 (299)	13.75 (349)	23 (10)
391-6	6	1.5	1	143TC	7.38 (187)	6.19 (157)	11.76 (299)	14.50 (368)	24 (10)
391-7	7	1.5	1	143TC	7.38 (187)	6.19 (157)	11.76 (299)	15.25 (387)	25 (11)
391-8	8	2	1	145TC	7.38 (187)	6.19 (157)	11.76 (299)	16 (406)	26 (11)
391-9	9	2	1	145TC	7.38 (187)	6.19 (157)	11.76 (299)	17 (432)	27 (12)
391-10	10	3	2	182TC	9.88 (251)	7.84 (199)	16.5 (419)	18.63 (473)	28 (12)
391-11	11	3	2	182TC	9.88 (251)	7.84 (199)	16.5 (419)	19.50 (495)	28 (12)
391-13	13	3	2	182TC	9.88 (251)	7.84 (199)	16.5 (419)	21.13 (537)	28 (12)
391-15	15	5	2	184TC	9.88 (251)	7.84 (199)	16.5 (419)	22.81 (579)	28 (12)
391-16	16	5	2	184TC	9.88 (251)	7.84 (199)	16.5 (419)	23.75 (603)	39 (17)
391-18	18	5	2	184TC	9.88 (251)	7.84 (199)	16.5 (419)	25.25 (641)	41 (18)

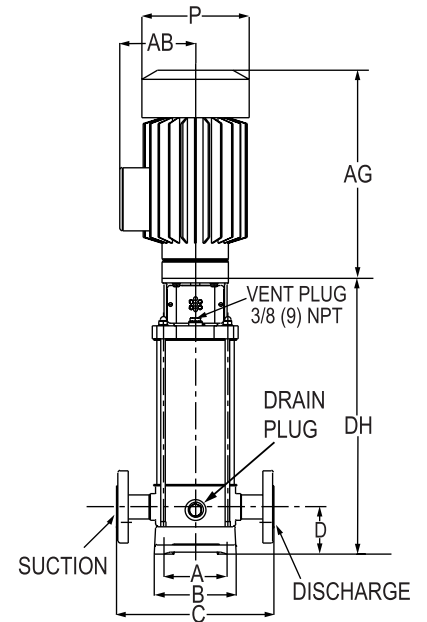
392

MODEL	# OF STAGES	HP 60HZ	HP 50HZ	FRAME	P	AB	AG	DH	WEIGHT [PUMP ONLY]
392-2	2	.75	.33	56C	7.38 (187)	5.75 (146)	11.82 (300)	11.25 (286)	22 (10)
392-3	3	1	.5	56C	7.38 (187)	5.75 (146)	11.82 (300)	12 (305)	23 (10)
392-4	4	1.5	1	143TC	7.38 (187)	6.19 (157)	11.76 (299)	12.75 (324)	24 (11)
392-5	5	1.5	1	143TC	7.38 (187)	6.19 (157)	11.76 (299)	13.63 (346)	25 (11)
392-6	6	2	1	145TC	7.38 (187)	6.19 (157)	11.76 (299)	14.5 (368)	26 (11)
392-7	7	3	2	182TC	9.88 (251)	7.84 (199)	16.5 (419)	16.25 (413)	35 (15)
392-8	8	3	2	182TC	9.88 (251)	7.84 (199)	16.5 (419)	17 (432)	35 (15)
392-9	9	3	2	182TC	9.88 (251)	7.84 (199)	16.5 (419)	17.88 (454)	35 (15)
392-10	10	5	2	184TC	9.88 (251)	7.84 (199)	16.5 (419)	18.63 (473)	35 (15)
392-11	11	5	2	184TC	9.88 (251)	7.84 (199)	16.5 (419)	19.5 (495)	36 (16)
392-13	13	5	3	184TC	9.88 (251)	7.84 (199)	16.5 (419)	21.13 (537)	38 (17)
392-15	15	5	3	184TC	9.88 (251)	7.84 (199)	16.5 (419)	22.75 (578)	40 (18)
392-16	16	7.5	3	184TC	9.88 (251)	7.84 (199)	16.5 (419)	23.63 (600)	41 (18)

MODELS 391 & 392	60HZ 3450 RPM
	50HZ 2880 RPM



MODEL 391 & 392
ANSI 250 LB.
SLIP RING FLANGE



	MODEL	
	391	392
A	3.94 (100)	3.94 (100)
B	5.12 (130)	5.12 (130)
C	9.84 (250)	9.84 (250)
D	3.00 (75)	3.00 (75)
E	7.08 (180)	7.08 (180)
F	8.27 (210)	8.27 (210)
G	1.25 (31)	1.25 (31)

NOTES:

1. All dimensions are in inches (mm) and may vary $\pm 1/4$ (6).
2. Not for construction purposes unless certified.
3. Motor dimensions are representative and will vary by enclosure and manufacturer.