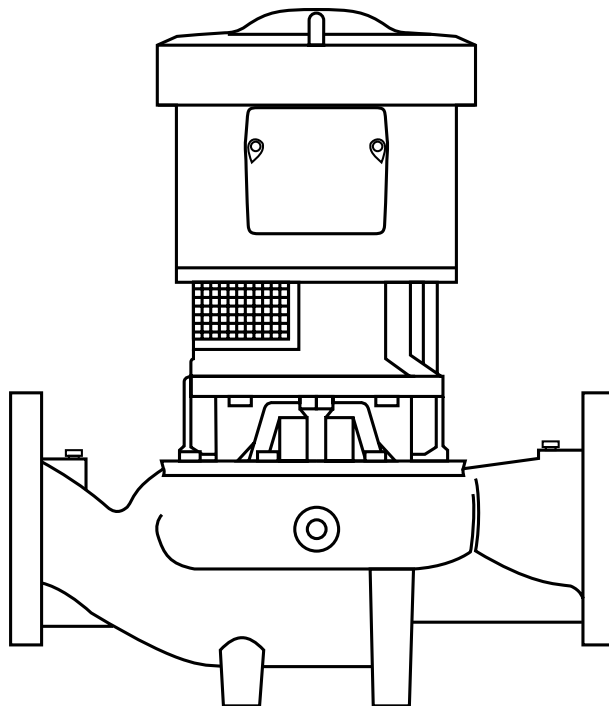


380 SERIES REPAIR PARTS INDEX



READ AND UNDERSTAND THE PUMP AND MOTOR
INSTRUCTIONS BEFORE ATTEMPTING TO INSTALL,
DISASSEMBLE OR REPAIR THE PUMP

380 SERIES MODEL 382A

TABLE OF CONTENTS

PUMP MODEL	DESCRIPTION	PAGE
382A	1-1/2 x 1-1/2 x 7 THRU 4 x 4 x 7A &B	4
382A	1-1/2 x 1-1/2 x 9B THRU 6 x 6 x 9	5-6
382A	4 x 4 x 11 THRU 8 x 8 x 11	7
382A	2 x 2 x 12 THRU 8 x 8 x 12	8
382A	8 x 8 x 15 AND 10 x 10 x 15	9

NOTES: MODEL 382A PUMPS.

FOR PUMPS 12" & SMALLER

PART NO. 9, 9A, 9B, 9C, 10, 11, 12, 25 AND 27 ARE LISTED WITH A LARGE LETTER "S" OR "L".. THESE PUMPS ARE BUILT ON TWO SHAFT SIZES, "S" INDICATING SMALL AND "L" FOR LARGE.

TO DETERMINE WHEN TO USE "S" OR "L" PARTS, IN ADDITION TO THE PUMP SIZE AND SERIAL NUMBER, IT IS ALSO NECESSARY TO HAVE THE MOTOR FRAME NUMBER.

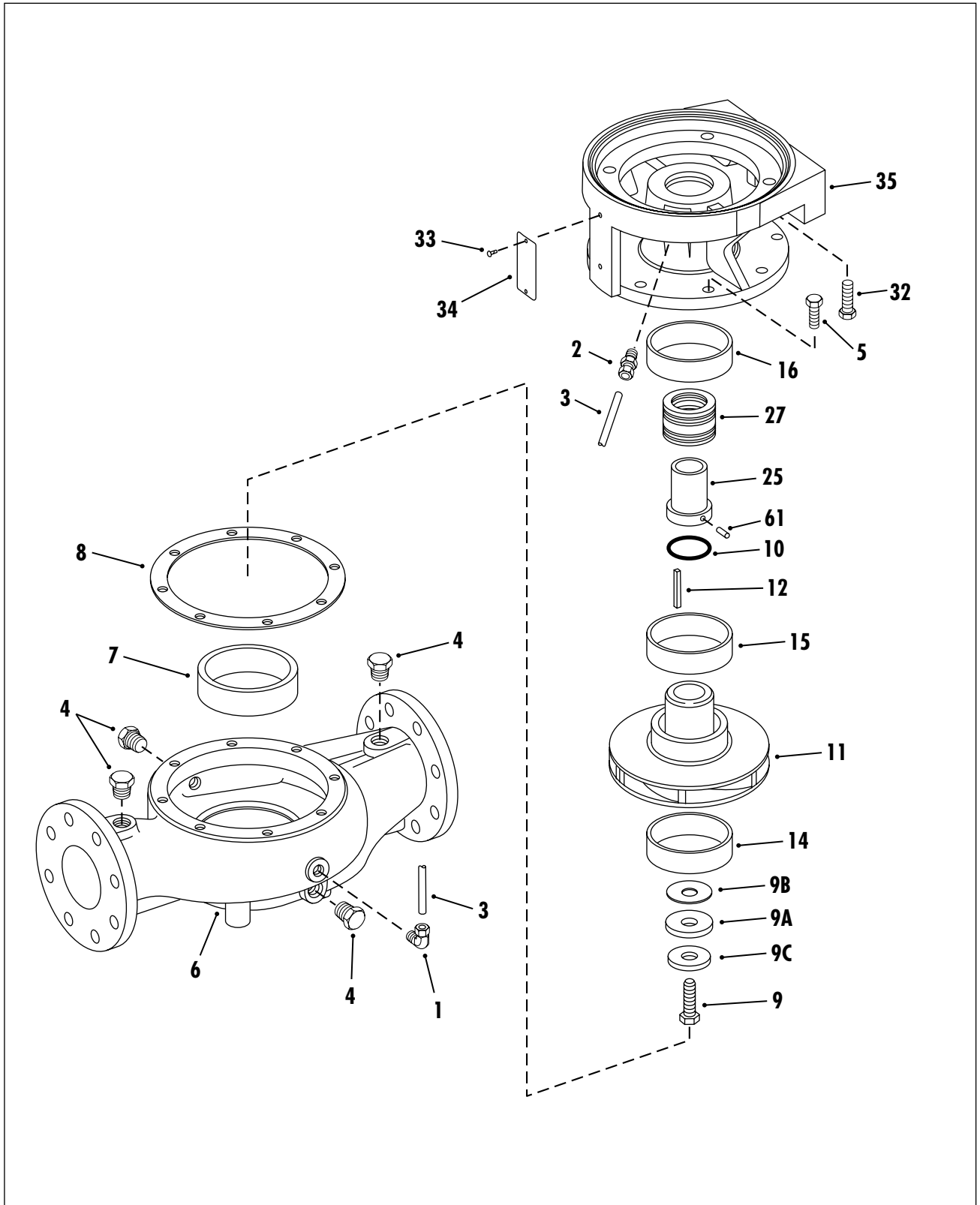
MOTOR FRAME 215 JM AND SMALLER USE "S" PARTS.

MOTOR FRAME 254 JM TO 326JM USE "L" PARTS.

**380 SERIES
MODEL 382A
PIECE NUMBERS**

**SECTION 380P PAGE 3
DATED MAY 2002**

**SUPERSEDES 380P PAGE 3
DATED NOVEMBER 1999**



**380 SERIES
 MODEL 382A
 1-1/2 x 1-1/2 x 7 – 4 x 7A&B
 PARTS LIST**

PC. NO.	DESCRIPTION	QTY	PART NO.	MATERIAL				
				B.F.	A.B.	A.I.	S.S.	
1	COMP. ELBOW	1	868-3660	190		087		
2	COMP. CONNECTOR	1	868-3359	190		087		
3	TUBING	1	872-0124	175		087		
4	PIPE PLUG	5	600-0002	087		087		
5	CAPSCREW	8	168-0381	082		082		
6	CASING 1-1/2x7	1	180-2562	010		010		
		2x7	1	180-2573	010		010	
		2-1/2x7	1	180-2574	010		010	
		3x7A&7B	1	180-2560	010		010	
		4x7A&7B	1	180-2561	010		010	
7	WEAR RING 1-1/2x7	1	676-1150	208		010		
		2x7	1	676-1151	208		010	
		2-1/2x7	1	676-1152	208		010	
		3x7A&7B	1	676-1152	208		010	
		4x7A&7B	1	676-1154	208		010	
8	GASKET	1	364-1014	603		603		
9	IMPELLER SCREW	S	1	168-0382	113		113	
		L	1	168-0490	113		113	
9A	WASHER	S	1	908-0603	087		087	
		L	1	908-0604	087		087	
9B	GASKET	S	1	364-2034	603		603	
		L	1	364-2035	603		603	
9C	CAPSCREW SEAL	S	1	908-1290	999		999	
		L	1	908-1292	999		999	
10	O-RING	S	1	364-0409	457		457	
		L	1	364-0414	457		457	
11	IMP. 1-1/2x7	S	1	443-0407	225		010	
		2x7	1	443-0407	225		010	
		2-1/2x7	1	443-0411	225		010	
		3x7A	1	443-2034	225		010	
		3x7B	1	443-0417	225		010	
		4x7A	1	443-0425	225		010	
		4x7B	1	443-0423	225		010	
	IMP. 2-1/2 x 7	L	1	443-0413	225		010	
		3x7A	1	443-2035	225		010	
		3x7B	1	443-0419	225		010	
4x7A	1	443-0427	225		010			
4x7B	1	443-0472	225		010			

PC. NO.	DESCRIPTION	QTY	PART NO.	MATERIAL						
				B.F.	A.B.	A.I.	S.S.			
11	IMPELLER (MACH FOR OPT RINGS #14 & 15)	1-1/2x7 S	1	443-0408	225		010			
			2x7	1	443-0410	225		010		
			2-1/2x7	1	443-0412	225		010		
			3x7A	1	443-1775	225		010		
			3x7B	1	443-0418	225		010		
	IMPELLER (MACH FOR OPT RINGS #14 & 15)	2-1/2x7 L	4x7A	1	443-0426	225		010		
			4x7B	1	443-0424	225		010		
			3x7A	1	443-0414	225		010		
			3x7B	1	443-1776	225		010		
			4x7A	1	443-0420	225		010		
12	IMPELLER KEY	S	1	472-0201	087		087			
			L	1	472-0247	087		087		
			14	WEAR RING 1-1/2x7	1	676-1145	208		010	
					2x7	1	676-1146	208		010
15	WEAR RING 2-1/2x7	S	1	676-1133	208		010			
			3x7A&7B	1	676-1133	208		010		
			4x7A&7B	1	676-1140	208		010		
			2-1/2x7	1	676-1133	208		010		
16	WEAR RING	S	NOT REQUIRED							
			NOT REQUIRED							
25	SLEEVE	S	1	756-0077	208		104			
			L	1	756-0078	208		104		
27	SEAL	S	1	712-0907	749		749			
			L	1	712-0910	749		749		
32	CAPSCREW 143JM-184JM	S	4	168-0386	082		082			
			213JM-256JM	4	168-0490	082		082		
33	SCREW	S	2	708-0013	365		365			
34	NAMEPLATE	S	1	532-0045	114		114			
35	BRACKET 143JM-184JM	S	1	116-0192	010		010			
			213JM-215JM	1	116-0194	010		010		
			254JM-256JM	1	116-0197	010		010		
61	PIN	S	INCLUDED WITH NO. 25							

**380A SERIES
MODEL 382A**

**1-1/2 x 1-1/2 x 9B – 6 x 6 x 9
PARTS LIST**

SECTION 380P PAGE 5
DATED MAY 2002

SUPERSEDES 380P PAGE 5
DATED NOVEMBER 1999

PC. NO.	DESCRIPTION	QTY	PART NO.	MATERIAL			
				B.F.	A.B.	A.I.	S.S.
1	COMP. ELBOW	1	868-3660	190		087	
2	COMP. CONNECTOR	1	868-3359	190		087	
3	TUBING	1	872-0124	175		087	
4	PIPE PLUG	5	600-0002	087		087	
5	CAPSCREW	8	168-0489	082		082	
6	CASING						
	1-1/2x9B	1	180-2173	010		010	
	2x9A&9B	1	180-2174	010		010	
	2x9C	1	180-2517	010		010	
	2-1/2x9	1	180-2575	010		010	
	3x4x9	1	180-2518	010		010	
	3x9A	1	180-2177	010		010	
	3x9B	1	180-2178	010		010	
	4x5x9	1	180-2519	010		010	
	4x9A&9B	1	180-2181	010		010	
	5x9	1	180-2576	010		010	
6x9	1	180-2577	010		010		
7	WEAR RING						
	1-1/2x9B	1	676-1150	208		010	
	2x9, 9A&9B	1	676-1151	208		010	
	2-1/2x9	1	676-1152	208		010	
	3x4x9	1	676-2104	208		010	
	3x9A&9B	1	676-1152	208		010	
	4x5x9, 9A&9B	1	676-1154	208		010	
	5x9	1	676-1155	208		010	
6x9	1	676-1155	208		010		
8	GASKET	1	364-1015	603		603	
9	IMP. SCREW	S	1	168-0382	113		113
		L	1	168-0490	113		113
9A	WASHER	S	1	908-0603	087		087
		L	1	908-0604	087		087
9B	GASKET	S	1	364-2034	603		603
		L	1	364-2035	603		603
9C	CAPSCREW SEAL	S	1	908-1290	999		999
		L	1	908-1292	999		999
10	O-RING	S	1	364-0409	457		457
		L	1	364-0414	457		457
11	IMPELLER	S					
			1	443-0431	225		010
			1	443-0437	225		010

PC. NO.	DESCRIPTION	QTY	PART NO.	MATERIAL						
				B.F.	A.B.	A.I.	S.S.			
11	IMPELLER	S								
			2x9B	1	443-0435	225		010		
			2-1/2x9	1	443-0441	225		010		
			3x4x9	1	443-2748	225		010		
			3x9A	1	443-0441	225		010		
			3x9B	1	443-0445	225		010		
			4x5x9	1	443-2750	225		010		
			4x9A	1	443-1766	225		010		
			4x9B	1	443-1762	225		010		
			5x9	1	443-0457	225		010		
			6x9	1	443-0465	225		010		
			2x9C	L	1	443-0439	225		010	
					2-1/2x9	1	443-0443	225		010
					3x4x9	1	443-2749	225		010
	3x9A	1			443-0443	225		010		
	3x9B	1			443-0447	225		010		
	4x5x9	1			443-2751	225		010		
	4x9B	1			443-1764	225		010		
	5x9	1	443-0459	225		010				
	6x9	1	443-0467	225		010				
	IMPELLER (MACH. FOR OPT. RINGS #14 & 15)	S								
1-1/2x9B			1	443-0432	225		010			
2x9A			1	443-0438	225		010			
2x9B			1	443-0436	225		010			
2x9C			1	443-0438	225		010			
2-1/2x9			1	443-0422	225		010			
3x9A			1	443-0442	225		010			
3x9B			1	443-0446	225		010			
4x9A			1	443-1767	225		010			
5x9			1	443-0458	225		010			
6x9			1	443-0466	225		010			
IMPELLER (MACH. FOR OPT. RINGS #14 & 15)			L							
				2x9C	1	443-0440	225		010	
				2-1/2x9	1	443-0444	225		010	
	3x9A	1		443-0444	225		010			
	3x9B	1		443-0448	225		010			
	4x9B	1		443-1765	225		010			
	5x9	1		443-0460	225		010			
	6x9	1		443-0468	225		010			

380 SERIES
MODEL 382A
1-1/2 x 1-1/2 x 9B - 6 x 6 x 9
PARTS LIST

PC. NO.	DESCRIPTION	Q T Y	PART NO.	MATERIAL			
				B.F.	A.B.	A.I.	S.S.
12	IMPELLER KEY	S	1 472-0201	087		087	
		L	1 472-0247	087		087	
14	WEAR RING						
		1-1/2x9B	1 676-1145	208		010	
		2x9A, B & C	1 676-1146	208		010	
		2-1/2x9	1 676-1133	208		010	
		3x9A&B	1 676-1133	208		010	
		4x9A&B	1 676-1140	208		010	
		5x9	1 676-1141	208		010	
		6x9	1 6761141	208		010	
15	WEAR RING						
		1-1/2x9B	NOT REQUIRED				
		2x9A, B & C	NOT REQUIRED				
		2-1/2x9	1 676-1133	208		010	
		3x9A&B	1 676-1133	208		010	
		4x9A&B	1 676-1156	208		010	
		5x9	1 676-1156	208		010	
		6x9	1 676-1156	208		010	
16	WEAR RING						
		1-1/2x9B	NOT REQUIRED				
		2x9A, B & C	NOT REQUIRED				
		2-1/2x9	1 676-0003	010		010	
		3x9A&B	1 676-0003	010		010	
		4x9A&B	NOT REQUIRED				
25	SLEEVE	S	1 756-0077	208		104	
		L	1 756-0078	208		104	
27	SEAL	S	1 712-0907	749		749	
		L	1 712-0940	749		749	

PC. NO.	DESCRIPTION	Q T Y	PART NO.	MATERIAL			
				B.F.	A.B.	A.I.	S.S.
32	CAPSCREW						
		4	168-0386	082		082	
		4	168-0490	082		082	
		4	168-0490	082		082	
33	SCREW	2	708-0013	365		365	
34	NAMEPLATE	1	532-0045	114		114	
35	BRACKET						
		1	116-0193	010		010	
		1	116-0195	010		010	
		1	116-0198	010		010	
61	PIN		INCLUDED WITH NO. 25				

**380 SERIES
MODEL 382A
4 x 4 x 11 – 8 x 8 x 11
PARTS LIST**

SECTION 380P PAGE 7

DATED MAY 2002

SUPERSEDES 380P PAGE 7

DATED NOVEMBER 1999

PC. NO.	DESCRIPTION	QTY	PART NO.	MATERIAL					
				B.F.	A.B.	A.I.	S.S.		
1	COMP. ELBOW	1	868-3360	190		087			
2	COMP. CONNECTOR	1	868-3359	190		087			
3	TUBING	1	872-0124	175		087			
4	PIPE PLUG	3	600-0002	087		087			
5	CAPSCREW	8	168-0490	082		082			
6	CASING								
		4x11	1	180-2578	010		010		
		5x11	1	180-2579	010		010		
		6x11	1	180-2580	010		010		
		8x11	1	180-2581	010		010		
7	WEAR RING								
		4x11	1	676-1154	208		010		
		5x11	1	676-1155	208		010		
		6x11	1	676-1684	208		010		
		8x11	1	676-2104	208		010		
8	GASKET	1	364-2109	603		603			
9	CAPSCREW	S	1	168-0382	113		113		
		L	1	168-0490	113		113		
9A	WASHER	S	1	908-0603	087		087		
		L	1	908-0604	087		087		
9B	GASKET	S	1	364-2034	603		603		
		L	1	364-2035	603		603		
9C	CAPSCREW	S	1	908-1290	999		999		
		L	1	908-1292	999		999		
10	O-RING	S	1	364-0409	457		457		
		L	1	364-0414	457		457		
11	IMPELLER	S							
			4x11	1	443-2388	225		010	
			5x11	1	443-2389	225		010	
			6x11	1	443-2390	225		010	
			8x11	1	443-2390	225		010	
			4x11	L	1	443-2400	225		010
			5x11	L	1	443-2401	225		010
			6x11	L	1	443-2402	225		010
	8x11	L	1	443-2402	225		010		
	IMPELLER (MACH. FOR OPT. RINGS #14 & 15)	S							
			4x11	1	443-2424	225		010	
			5x11	1	443-2425	225		010	
			6x11	1	443-2426	225		010	
6x11			1	443-2426	225		010		

PC. NO.	DESCRIPTION	QTY	PART NO.	MATERIAL				
				B.F.	A.B.	A.I.	S.S.	
11	IMPELLER (MACH. FOR OPT. RINGS #14 & 15)	L						
			4x11	1	443-2428	225		010
			5x11	1	443-2429	225		010
			6x11	1	443-2430	225		010
			8x11	1	443-2430	225		010
12	IMPELLER KEY	S	1	472-0201	087		087	
		L	1	472-0247	087		087	
14	WEAR RING							
		4x11	1	676-1140	208		010	
		5x11	1	676-1141	208		010	
		6x11	1	676-1143	208		010	
		8x11	1	676-1143	208		010	
15	WEAR RING							
		4x11	1	676-1156	208		010	
		5x11	1	676-1156	208		010	
		6x11	1	676-1156	208		010	
		8x11	1	676-1156	208		010	
16	WEAR RING			NOT REQUIRED				
25	SLEEVE	S	1	756-0077	208		104	
		L	1	756-0078	208		104	
27	SEAL	S	1	712-0907	749		749	
		L	1	712-0910	749		749	
32	CAPSCREW MTR. FR. 213JM - 215JM 254JM - 256JM 284JM - 326JM		4	168-0490	082		082	
			4	168-0490	082		082	
			4	168-0562	082		082	
33	U DRIVE SCREW		2	708-0013	365		365	
34	NAMEPLATE		1	532-0045	114		114	
35	213JM - 215JM 254JM - 256JM 284JM - 326JM		1	116-0465	010		010	
			1	116-0466	010		010	
			1	116-0467	010		010	
61	PIN			INCLUDED WITH NO. 25				

380 SERIES
MODEL 382A
2 x 2 x 12 – 8 x 8 x 12
PARTS LIST

PC. NO.	DESCRIPTION	QTY	PART NO.	MATERIAL				
				B.F.	A.B.	A.I.	S.S.	
1	COMP. ELBOW	1	868-3660	190		087		
2	COMP. CONNECTOR	1	868-3359	190		087		
3	TUBING	1	872-0124	175		087		
4	PIPE PLUG	5	600-0002	087		087		
5	CAPSCREW	8	168-0489	082		082		
6	CASING	2x12	1	180-2175	010	010		
		3x12	1	180-2179	010	010		
		4x12	1	180-2582	010	010		
		5x12	1	180-2583	010	010		
		6x12	1	180-2584	010	010		
		8x12	1	180-2593	010	010		
7	WEAR RING	2x12	1	676-1151	208	010		
		3x12	1	676-1152	208	010		
		4x12	1	676-1154	208	010		
		5x12	1	676-1155	208	010		
		6x12	1	676-1684	208	010		
		8x12	1	676-2100	208	010		
8	GASKET	1	364-1016	603		603		
9	IMP. SCREW	S	1	168-0382	113	113		
		L	1	168-0490	113	113		
9A	WASHER	S	1	908-0603	087	087		
		L	1	908-0604	087	087		
9B	GASKET	S	1	364-2034	603	603		
		L	1	364-2035	603	603		
9C	CAPSCREW SEAL	S	1	908-1290	999	999		
		L	1	908-1292	999	999		
10	O-RING	S	1	364-0409	457	457		
		L	1	364-0414	457	457		
11	IMPELLER	S						
		2x12	1	443-1734	225	010		
		3x12	1	443-1735	225	010		
		4x12	1	443-1737	225	010		
	IMPELLER	L	2x12	1	443-1725	225	010	
			3x12	1	443-1726	225	010	
			4x12	1	443-1728	225	010	
			5x12	1	443-1729	225	010	
			6x12	1	443-1730	225	010	
			8x12	1	443-2664	225	010	
IMPELLER (MACH. FOR OPT. RING #14 & 15)	S	2x12	1	443-1748	225	010		
		3x12	1	443-1749	225	010		
		4x12	1	443-1751	225	010		

PC. NO.	DESCRIPTION	QTY	PART NO.	MATERIAL				
				B.F.	A.B.	A.I.	S.S.	
11	IMPELLER (MACH. FOR OPT. RING #14 & 15)	L						
			2x12	1	443-1739	225	010	
			3x12	1	443-1740	225	010	
			4x12	1	443-1742	225	010	
			5x12	1	443-1743	225	010	
			6x12	1	443-1744	225	010	
			8x12	1	443-2977	225	010	
12	IMPELLER KEY	S	1	472-0201	087	087		
		L	1	472-0247	087	087		
14	WEAR RING	2x12	1	676-1146	208	010		
		3x12	1	676-1133	208	010		
		4x12	1	676-1140	208	010		
		5x12	1	676-1141	208	010		
		6x12	1	676-1143	208	010		
		8x12	1	676-2101	208	010		
15	WEAR RING	2x12		NOT REQUIRED				
		3x12	1	676-1133	208	010		
		4x12	1	676-1156	208	010		
		5x12	1	676-1156	208	010		
		6x12	1	676-1156	208	010		
		8x12	1	676-1156	208	010		
16	WEAR RING			NOT REQUIRED				
25	SLEEVE	S	1	756-0077	208	104		
		L	1	756-0078	208	104		
27	SEAL	S	1	712-0907	749	749		
		L	1	712-0940	749	749		
32	CAPSCREW	213JM-215JM	4	168-0490	082	082		
		254JM-256JM	4	168-0490	082	082		
33	SCREW		2	708-0013	365	365		
34	NAMEPLATE		1	532-0045	114	114		
35	BRACKET	213JM-215JM	1	116-0196	010	010		
		254JM-256JM	1	116-0199	010	010		
61	PIN			INCLUDED WITH NO. 25				

**380 SERIES
MODEL 382A
8 x 8 x 15 – 10 x 10 x 15
PARTS LIST**

SECTION 380P PAGE 9

DATED MAY 2002

SUPERSEDES 380P PAGE 9

DATED NOVEMBER 1999

PC. NO.	DESCRIPTION	QTY	PART NO.	MATERIAL				
				B.F.	A.B.	A.I.	S.S.	
1	COMP. ELBOW	1	868-3360	190		087		
2	COMP. CONNECTOR	1	868-3559	190		087		
3	TUBING	1	872-0124	175		087		
4	PIPE PLUG	5	600-0002	082		082		
5	CAPSCREW	8	168-0636	082		082		
6	CASING							
	8 x 8 x 15	1	180-2595	010		010		
	10 x 10 x 15	1	180-2596	010		010		
7	WEAR RING							
	8 x 8 x 15	1	676-2036	222		010		
	10 x 10 x 15	1	676-2037	222		010		
8	O-RING	1	364-0557	457		457		
9	IMPELLER SCREW	1	168-0490	104		104		
9A	WASHER	1	908-1326	104		104		
9B	GASKET	1	364-2046	603		603		
9C	CAPSCREW SEAL	1	908-1292	118		118		
10	O-RING	1	364-0419	457		457		
11	IMPELLER							
	8 x 8 x 15	1	443-3088	208		010		
	10 x 10 x 15	1	443-3090	208		010		
11A	IMPELLER*							
	8 x 8 x 15	1	443-3089	208		010		
	10 x 10 x 15	1	443-3091	208		010		
12	IMPELLER KEY 364-445TCZ	1	472-0318	087		087		
14	IMPELLER RING (OPT)							
	8 x 8 x 15	1	676-1053	208		010		
	10 x 10 x 15	1	676-1971	208		010		
15	IMPELLER RING (OPT)							
	8 x 8 x 15	1	676-1053	208		010		
	10 x 10 x 15	1	676-1053	208		010		
16	WEAR RING							
	8 x 8 x 15	1	676-2036	222		010		
	10 x 10 x 15	1	676-2036	222		010		
25	SLEEVE	1	756-0692	208		108		
27	SEAL	1	712-0314	749		749		
32	CAPSCREW	4	168-0654	082		082		
33	U DRIVE SCREW	2	708-0013	365		365		
34	NAMEPLATE	1	532-0045	114		114		
35	BRACKET, 15"							
	364-405TCZ	1	116-0537	010		010		
	444-445TCZ	1	116-0539	010		010		
61	PIN		INCLUDED WITH NO. 25					

* MACHINED FOR OPT.
RINGS #14 AND 15

NOTE:

Aurora Pump reserves the right to make revisions to its products and their specifications, and to this bulletin and related information without notice



Aurora Pumps
800 Airport Road
North Aurora, IL 60542
phone: 630-859-7000
fax: 630-859-7060