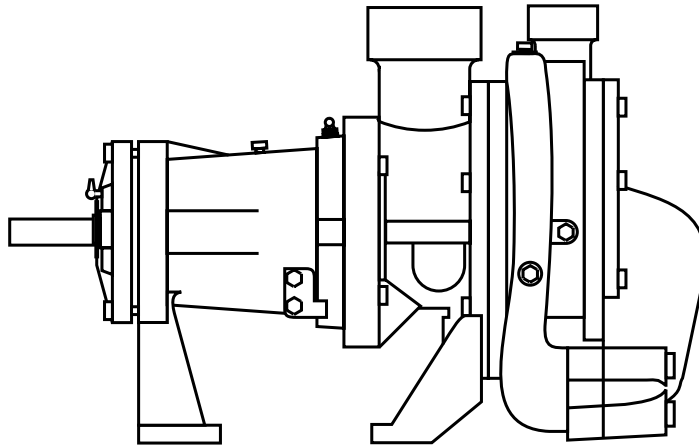


370 SERIES REPAIR PARTS INDEX



READ AND UNDERSTAND THE PUMP AND MOTOR
INSTRUCTIONS BEFORE ATTEMPTING TO INSTALL,
DISASSEMBLE OR REPAIR THE PUMP

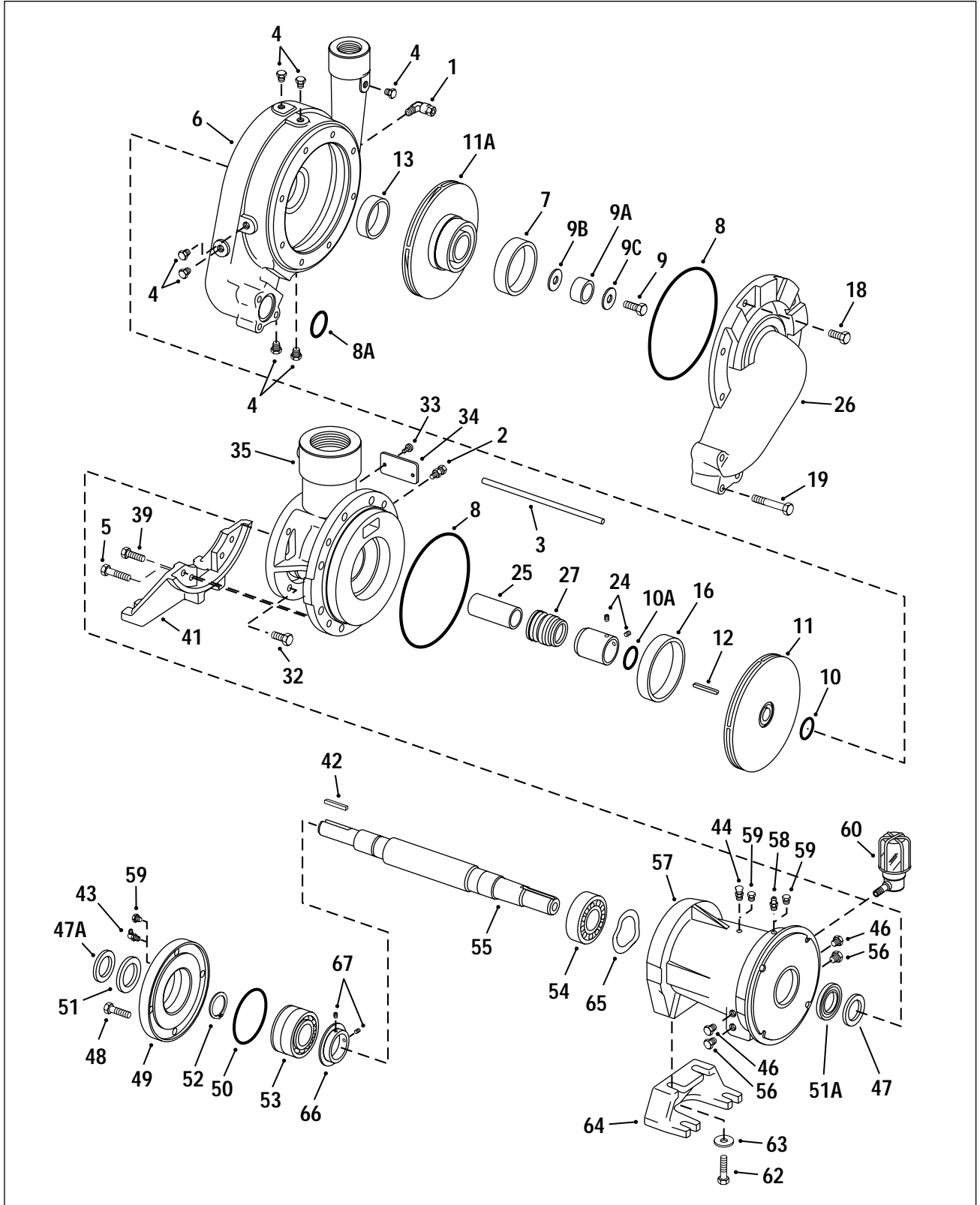
**370 SERIES
MODEL 374B**

TABLE OF CONTENTS

PUMP MODEL	DESCRIPTION	PAGE
374B	EXPLODED VIEW AND PIECE NUMBERS	3
374B	MODEL IDENTIFICATION	4
374B	1-1/2 x 3 x 10 #2 POWER FRAME - PARTS LIST	5
374B	1-1/2 x 3 x 10 #3A POWER FRAME - PARTS LIST	6
374B	2 x 4 x 10 #3 POWER FRAME - PARTS LIST	7

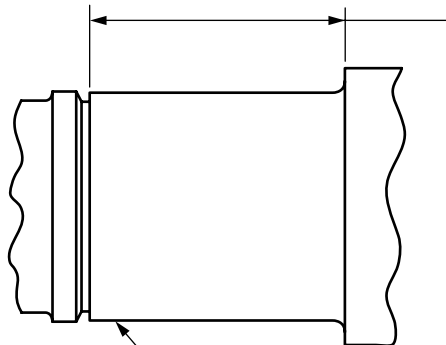
370 SERIES
MODEL 374
PIECE NUMBERS

SECTION 370P PAGE 3
DATED NOVEMBER 1999
SUPERSEDES 370P PAGE 3
DATED NOVEMBER 1988



370 SERIES

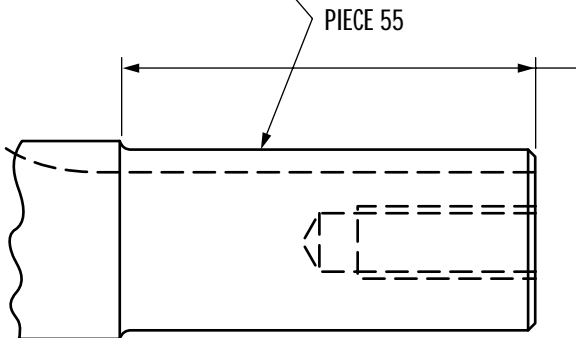
MODEL 374 IDENTIFICATION



BEARING SHOULDER TO SNAP RING GROOVE OF THRUST BEARING

PART NO.	DIM.	MODEL	PUMP SIZE
7284985063	55/64	374	1-1/2 x 3 x 10
7284990063	1-25/32	374A	1-1/2 x 3 x 10
7284991063	1-25/32	374B	1-1/2 x 3 x 10
7280140063	1-1/64	374	2 x 4 x 10
7280406063	2-5/64	374B	2 x 4 x 10
7287103063	2-5/64	374B	1-1/2 x 3 x 10

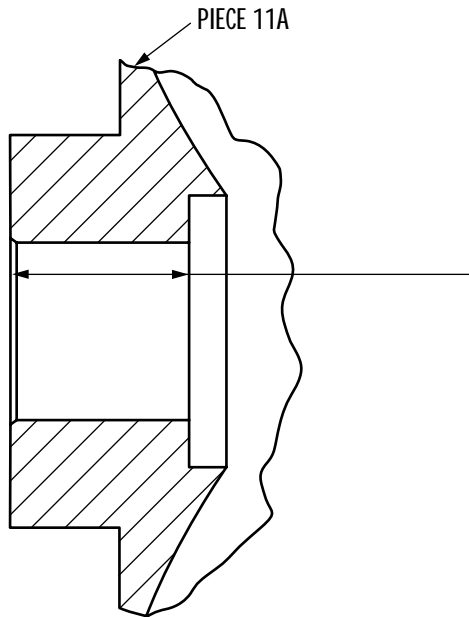
Powerframe
3A



END OF SHAFT TO SHOULDER AT IMPELLER END

PART NO.	DIM.	MODEL	PUMP SIZE
7284985063	2-1/4	374	1-1/2 x 3 x 10
7284990063	2-1/4	374A	1-1/2 x 3 x 10
7284991063	2-7/8	374B	1-1/2 x 3 x 10
7287103063	2-7/8	374B	1-1/2 x 3 x 10

Powerframe
3A



BORE LENGTH SECOND STAGE IMPELLER

PART NO.	DIM.	MODEL	PUMP SIZE
4430531010	23/32	374 & 374A	1-1/2 x 3 x 10
4430533010	23/32	374 & 374A	1-1/2 x 3 x 10
4432262010	1-1/4	374B	1-1/2 x 3 x 10
4432263010	1-1/4	374B	1-1/2 x 3 x 10

Refer to PARTS LISTS of individual model for part numbers.

NOTE: MODEL 374B PUMPS DESCRIBED IN THIS PARTS LIST HAVE BEEN MANUFACTURED SINCE JUNE 1978. FOR PUMPS MANUFACTURED PRIOR TO JUNE 1978 REFER TO NON-PRODUCTION SECTION OF THIS MANUAL.

**370 SERIES
MODEL 374B
1-1/2" x 3" x 10"
2 POWER FRAME
PARTS LIST**

SECTION 370P PAGE 5
DATED NOVEMBER 1999
SUPERSEDES 370P PAGE 5
DATED NOVEMBER 1988

PC. NO.	DESCRIPTION	QTY	PART NO.	MATERIAL		
				S.F.	A.I.	
1	COMP. ELBOW	1	868-3660	190		087
2	COMP. CONNECTOR	1	868-3359	190		087
3	TUBING	1	872-0124	175		087
4	PIPE PLUG	7	600-0002	087		087
5	CAPSCREW	2	168-0494	082		082
6	CASING	1	180-1810	010		010
7	CASE RING	1	676-1149	208		010
8	GASKET	2	364-0463	494		494
8A	GASKET	1	364-0418	494		494
9	IMP. SCREW	1	168-0490	113		113
9A	IMP. WASHER	1	908-0604	087		087
9B	GASKET	1	364-2035	603		603
9C	CAPSCREW SEAL	1	908-1292	999		999
10	GASKET	1	364-0415	494		494
10A	GASKET	1	364-0415	494		494
11	IMPELLER 1ST 9-1/2" - 7-9/16" DIA. 7-1/2" DIA. & SMALLER					
		1	443-0530	010		010
		1	443-2483	010		010
11A	IMPELLER 2ND	1	443-2262	010		010
12	IMPELLER KEY	1	472-0261	087		087
13	CASE RING	1	676-1660	208		010
16	CASE RING	1	676-1659	208		010
18	CAPSCREW	8	168-0488	082		082
19	CAPSCREW	3	168-0502	082		082
24	SETSCREW	2	724-0077	104		104
25	SLEEVE	1	756-0100	208		104
26	COVER	1	812-0065	010		010
27	SEAL J.C. 21 J.C. 21 - HI TEMP J.C. 1					
		1	712-1042	749		749
		1	712-1042	769		769
		1	712-0462	769		769
28	COLLAR J.C. 21 J.C. 1					
		1	224-0002	208		104
		1	224-0003	208		104
32	CAPSCREW	4	168-0494	082		082
33	U DRIVE SCREW	2	708-0013	365		365
34	NAMEPLATE	1	532-0045	114		114
35	BRACKET	1	116-0032	010		010
39	CAPSCREW	8	168-0490	082		082
41	SUPPORT	1	820-0034	010		010

PC. NO.	DESCRIPTION	QTY	PART NO.	MATERIAL		
				S.F.	A.I.	
42	KEY	1	472-0247	087		087
43	GREASE FITTING	1	508-0005	651		651
44	VENT. TUBE	1	864-0051	656		656
46	PIPE PLUG	1	600-0002	087		087
47	SLINGER	1	764-1021	478		478
47A	SLINGER	1	764-1021	478		478
48	CAPSCREW	4	168-0488	082		082
49	BEARING CAP	1	164-0471	010		010
50	O-RING	1	364-0492	457		457
51	SEAL*	1	712-0233	653		653
51A	SEAL*	1	712-0233	653		653
52	RETAINING RING	1	676-0938	088		088
53	O.B. BEARING	1	068-0343	647		647
54	I.B. BEARING*	1	068-0425	647		647
55	SHAFT	1	728-4991	063		063
56	PIPE PLUG	2	600-0002	087		087
57	FRAME-OIL LUBE GREASE LUBE					
		1	356-0232	010		010
		1	356-0202	010		010
58	GREASE FITTING	1	508-0001	651		651
59	PIPE PLUG	1	600-0001	087		087
60	OILER	1	552-0027	652		652
61	NIPPLE	1	600-1206	387		387
62	CAPSCREW	2	168-0490	082		082
63	WASHER	2	908-0114	080		080
64	SUPPORT	1	820-0033	010		010
65	WASHER	1	908-0144	088		088
66	GREASE RETAINER*	1	672-0052	058		058
67	SETSCREW*	2	724-0077	104		104

* OIL LUBE OPTION:

PIECE NO'S. 66 AND 67 ARE NOT REQUIRED.

PIECE NO. 54 IS PART NO. 068-0159-647.

PIECE NO'S. 51 AND 51A ARE PART NO'S. 712-0054-653.

FIELD CONVERSION TO OIL LUBE REQUIRES:

1. THAT SEALS 712-0054-653 BE USED.

2. THAT INITIAL GREASE FILL BE REMOVED FROM BEARING 068-0343-657.

370 SERIES
MODEL 374B
1-1/2" x 3" x 10"
3A POWER FRAME
PARTS LIST

PC. NO.	DESCRIPTION	QTY	PART NO.	MATERIAL		
				S.F.		A.I.
1	COMP. ELBOW	1	868-3660	190		087
2	COMP. CONNECTOR	1	868-3359	190		087
3	TUBING	1	872-0124	175		087
4	PIPE PLUG	7	600-0002	087		087
5	CAPSCREW	2	168-0494	082		082
6	CASING	1	180-1810	010		010
7	CASE RING	1	676-1149	208		010
8	GASKET	2	364-0463	494		494
8A	GASKET	1	364-0418	494		494
9	IMP. SCREW	1	168-0490	113		113
9A	IMP. WASHER	1	908-0604	087		087
9B	GASKET	1	364-2035	803		803
9C	CAPSCREW SEAL	1	908-1292	999		999
10	GASKET	1	364-0415	494		494
10A	GASKET	1	364-0415	494		494
11	IMPELLER 1ST	1	443-0530	010		010
11A	IMPELLER 2ND	1	443-2262	010		010
12	IMPELLER KEY	1	472-0261	087		087
13	CASE RING	1	676-1660	208		010
16	CASE RING	1	676-1659	208		010
18	CAPSCREW	8	168-0488	082		082
19	CAPSCREW	3	168-0502	082		082
24	SETSCREW	2	724-0077	104		104
25	SLEEVE	1	756-0100	208		104
26	COVER	1	812-0065	010		010
27	SEAL					
	J.C. 21	1	712-1042	749		749
	J.C. 21 - HI TEMP	1	712-1042	769		769
	J.C. 1	1	712-0462	769		769
28	COLLAR					
	J.C. 21	1	224-0002	208		104
	J.C. 1	1	224-0003	208		104
32	CAPSCREW	4	168-0492	082		082
33	U DRIVE SCREW	2	708-0013	365		365
34	NAMEPLATE	1	532-0045	114		114
35	BRACKET	1	116-0032	010		010
39	CAPSCREW	8	168-0490	082		082
41	SUPPORT	1	820-0034	010		010

PC. NO.	DESCRIPTION	QTY	PART NO.	MATERIAL		
				S.F.		A.I.
42	KEY	1	472-0247	087		087
43	GREASE FITTING	1	508-0005	651		651
44	VENT. TUBE	1	864-0051	656		656
46	PIPE PLUG	1	600-0002	087		087
47	SLINGER	1	764-1026	478		478
47A	SLINGER	1	764-1021	478		478
48	CAPSCREW	1	168-0492	082		082
49	BEARING CAP	1	164-0472	010		010
50	O-RING	1	364-0438	457		457
51	SEAL*	1	712-0233	653		653
51A	SEAL*	1	712-0234	653		653
52	RETAINING RING	1	676-0944	088		088
53	O.B. BEARING	1	068-0345	647		647
54	I.B. BEARING*	1	068-0427	647		647
55	SHAFT	1	728-7103	063		063
56	PIPE PLUG	2	600-0002	087		087
57	FRAME-OIL LUBE	1	356-0233	010		010
	GREASE LUBE	1	356-0203	010		010
58	GREASE FITTING	1	508-0001	651		651
59	PIPE PLUG	1	600-0001	087		087
60	OILER	1	552-0027	652		652
61	NIPPLE	1	600-1206	387		387
62	CAPSCREW	2	168-0490	082		082
63	WASHER	2	908-0114	080		080
64	SUPPORT	1	820-0033	010		010
65	WASHER	1	908-0146	088		088
66	GREASE RETAINER*	1	672-0051	058		058
67	SETSCREW*	2	724-0077	104		104

* OIL LUBE OPTION:

PIECE NO'S. 66 AND 67 ARE NOT REQUIRED.

PIECE NO. 54 IS PART NO. 068-0161-647.

PIECE NO. 51 IS PART NO. 712-0054-653.

PIECE NO. 51A IS PART NO. 712-0056-653.

FIELD CONVERSION TO OIL LUBE REQUIRES:

1. THAT SEALS 712-0054-653 AND 712-0056-653 BE USED.

2. THAT INITIAL GREASE FILL BE REMOVED FROM BEARING 068-0345-657.

**370 SERIES
MODEL 374B
2" x 4" x 10"
3 POWER FRAME
PARTS LIST**

SECTION 370P PAGE 7
DATED NOVEMBER 1999
SUPERSEDES 370P PAGE 7
DATED NOVEMBER 1988

PC. NO.	DESCRIPTION	QTY	PART NO.	MATERIAL		
				S.F.	A.I.	
1	COMP. ELBOW	1	868-3660	190		087
2	COMP. CONNECTOR	1	868-3359	190		087
3	TUBING	1	872-0124	175		087
4	PIPE PLUG	7	600-0002	087		087
5	CAPSCREW	2	168-0494	082		082
6	CASING	1	180-0373	010		010
7	CASE RING	1	676-0393	208		010
8	GASKET	2	364-0465	494		494
8A	GASKET	1	364-0422	494		494
9	IMP. SCREW	1	168-0490	113		113
9A	IMP. WASHER	1	908-0613	087		087
9B	GASKET	1	364-2025	803		803
9C	CAPSCREW SEAL	1	908-1292	999		999
10	GASKET	1	364-0417	457		457
10A	GASKET	1	364-0415	494		494
11	IMPELLER 1ST	1	443-2074	010		010
11A	IMPELLER 2ND	1	443-0991	010		010
12	IMPELLER KEY	1	472-0260	087		087
13	CASE RING	1	676-0394	208		010
16	CASE RING	1	676-0392	208		010
18	CAPSCREW	8	168-0488	082		082
19	CAPSCREW	3	168-0502	082		082
24	SETSCREW	2	724-0077	104		104
25	SLEEVE	1	756-0128	208		104
26	COVER	1	812-0068	010		010
27	SEAL					
	J.C. 21	1	712-1042	749		749
	J.C. 21 - HI TEMP	1	712-1042	769		769
	J.C. 1	1	712-0462	769		769
28	COLLAR					
	J.C. 21	1	224-0007	208		104
	J.C. 1	1	224-0008	208		104
32	CAPSCREW	4	168-0492	082		082
33	U DRIVE SCREW	2	708-0013	365		365
34	NAMEPLATE	1	532-0045	114		114
35	BRACKET	1	116-0083	010		010
39	CAPSCREW	8	168-0490	082		082
41	SUPPORT	1	820-0123	010		010

PC. NO.	DESCRIPTION	QTY	PART NO.	MATERIAL		
				S.F.	A.I.	
42	KEY	1	472-0318	087		087
43	GREASE FITTING	1	508-0005	651		651
44	VENT. TUBE	1	864-0051	656		656
46	PIPE PLUG	1	600-0002	087		087
47	SLINGER	1	764-1026	478		478
47A	SLINGER	1	764-1021	478		478
48	CAPSCREW	4	168-0492	082		082
49	BEARING CAP	1	164-0472	010		010
50	O-RING	1	364-0438	457		457
51	SEAL*	1	712-0233	653		653
51A	SEAL*	1	712-0234	653		653
52	RETAINING RING	1	676-0944	088		088
53	O.B. BEARING	1	068-0345	647		647
54	I.B. BEARING*	1	068-0427	647		647
55	SHAFT	1	728-0406	063		063
56	PIPE PLUG	2	600-0002	087		087
57	FRAME-OIL LUBE	1	356-0233	010		010
	GREASE LUBE	1	356-0203	010		010
58	GREASE FITTING	1	508-0001	651		651
59	PIPE PLUG	1	600-0001	087		087
60	OILER	1	552-0027	652		652
61	NIPPLE	1	600-1206	387		387
62	CAPSCREW	2	168-0490	082		082
63	WASHER	2	908-0114	080		080
64	SUPPORT	1	820-0122	010		010
65	WASHER	1	908-0146	088		088
66	GREASE RETAINER*	1	672-0051	058		058
67	SETSCREW*	2	724-0077	104		104

* OIL LUBE OPTION:
PIECE NO'S. 66 AND 67 ARE NOT REQUIRED.
PIECE NO. 54 IS PART NO. 068-0161-647.
PIECE NO. 51 IS PART NO. 712-0054-653.
PIECE NO. 51A IS PART NO. 712-0056-653.
FIELD CONVERSION TO OIL LUBE REQUIRES:
1. THAT SEALS 712-0054-653 AND 712-0056-653 BE USED.
2. THAT INITIAL GREASE FILL BE REMOVED FROM BEARING 068-0345-647.



NOTE:
Aurora Pump reserves the right to make revisions to its products and their specifications, and to this bulletin and related information without notice

Aurora Pumps
800 Airport Road
North Aurora, IL 60542
phone: 630-859-7000
fax: 630-859-7060