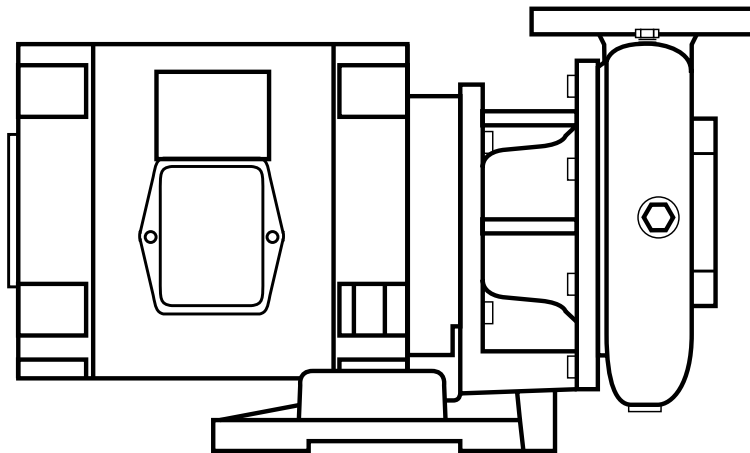


340A SERIES REPAIR PARTS INDEX



READ AND UNDERSTAND THE PUMP AND MOTOR
INSTRUCTIONS BEFORE ATTEMPTING TO INSTALL,
DISASSEMBLE OR REPAIR THE PUMP

340A SERIES REPAIR PARTS INDEX

TABLE OF CONTENTS

PUMP MODEL	DESCRIPTION	PAGE	PUMP SIZE	PAGE
341A	Horizontal Close Coupled Exploded view and piece numbers	3	1-1/4 x 1-1/2 x 7 thru 4 x 4 x 7B Part Numbers6 - 8
342A	Vertical Close Coupled Exploded view and piece numbers	4	1-1/4 x 1-1/2 x 9B thru 6 x 6 x 9 Part numbers	9 - 11
344A	Horizontal Power Frame Mounted Exploded view and piece numbers	5	1-1/2 x 2 x 11 thru 6 x 6 x 11A Part numbers	12 - 14
			1-1/2 x 2 x 12 thru 6 x 6 x 12A Part numbers	15- 17

THIS CHART FOR USE WITH **MODEL 344A PUMPS ONLY** TO DETERMINE POWER FRAME SIZE BASED ON THE PUMP SIZE AND OPERATING SPEED.

PUMP SIZE	3500	1750	1150
1-1/4 x 1-1/2 x 7	1	1	-
1-1/4 x 1-1/2 x 9B	-	1	-
1-1/2 x 2 x 7	1	1	-
1-1/2 x 2 x 9A	-	1	-
1-1/2 x 2 x 9B	-	1	-
1-1/2 x 2 x 9C	2	1	-
1-1/2 x 2 x 11	3	2	2
1-1/2 x 2 x 12	-	2	2
2 x 2-1/2 x 7A	2	1	-
2 x 2-1/2 x 7B	1	1	-
2 x 2-1/2 x 9	3	1	-
2 x 2-1/2 x 12	-	2	2
2 x 3 x 11	-	2	2
2-1/2 x 3x 7A	1	1	-
2-1/2 x 3 x 7B	2	1	-
2-1/2 x 3 x 9	3	1	-
2-1/2 x 3 x 12	-	2	2
3 x 4 x 9A	3	1	-
3 x 4 x 9B	3	1	-
3 x 4 x 11	-	2	2
3 x 4 x 12	-	3	2
4 x 4 x 7A	2	1	-
4 x 4 x 7B	2	1	-
4 x 5 x 9A	3	2	-
4 x 5 x 9B	-	2	-
4 x 5 x 11	-	2	2
4 x 5 x 12	-	3	2
5 x 6 x 11	-	3	2
5 x 6 x 12	-	3	2
6 x 6 x 9	-	2	2
6 x 6 x 11	-	3	2
6 x 6 x 11A	-	3	2
6 x 6 x 12	-	3	3
6 x 6 x 12A	-	3	-

REFER TO NOTES 1 AND 2 FOR **MODEL 341A AND 342A** CLOSE COUPLED PUMPS.

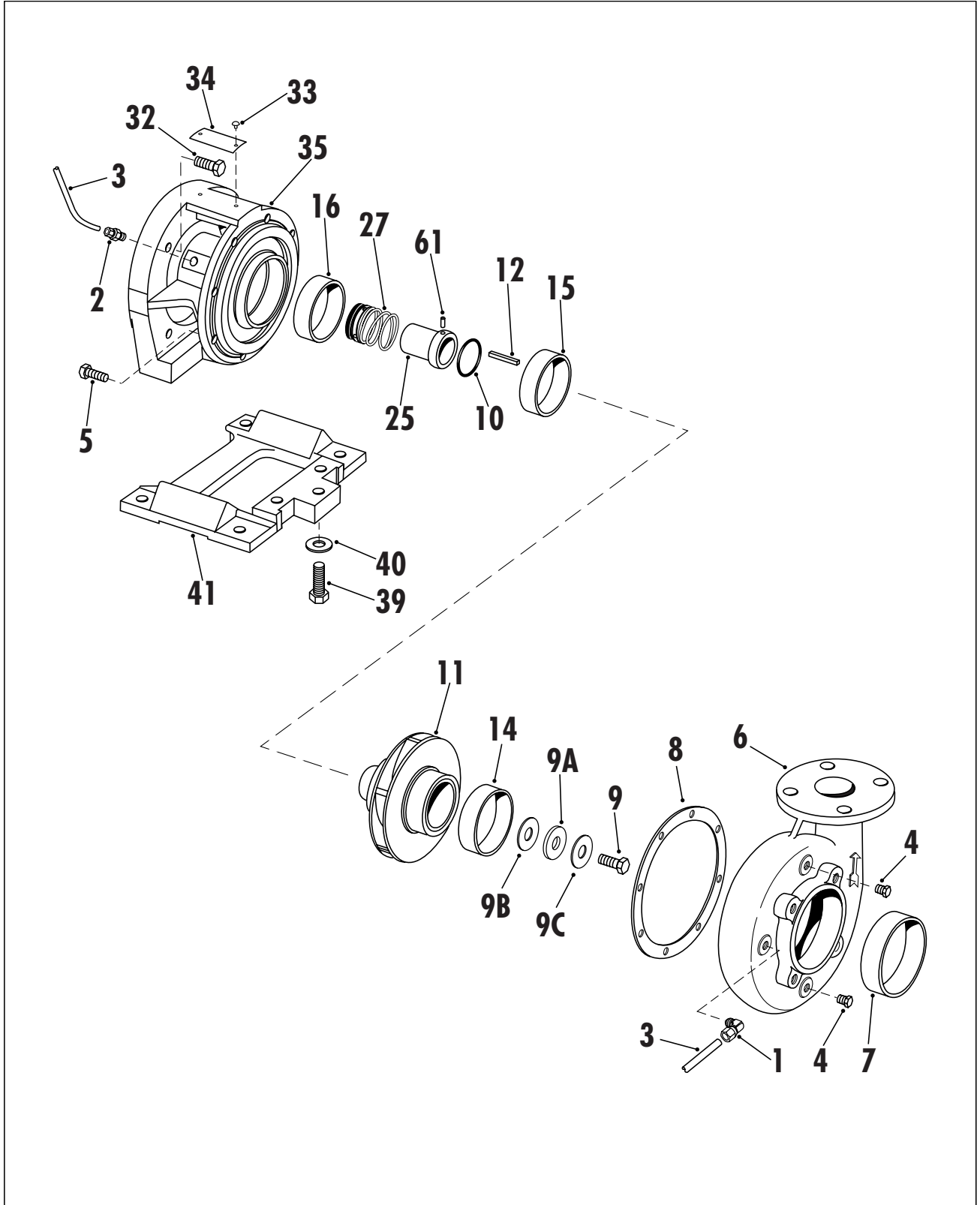
NOTES:

- 1) Part number 9, 10, 11, 12, 25 and 27 are listed with a letter **(S)** or **(L)** indicating the small or large shaft used to build the 340A series pumps.
- 2) To determine when to use **(S)** or **(L)** parts, in addition to the pump size, it is also necessary to have the close coupled motor frame number for 341A and 342A pumps. Motor frame 215JM and smaller use **(S)** parts. Motor frame 254JM and larger use **(L)** parts.
- 3) For 344A power frame assignment, refer to chart at left.
- 4) Liquid end maintenance kits may be found on pages 8, 11, 14 and 17 of this manual or in the current repair part kits manual.
- 5) Casings and brackets for pumps manufactured prior to 4/76 no longer available for models 341, 342 and 344. Both the current bracket and casing are required for these older pumps if a replacement is required.
- 6) Part numbers are shown for bronze fitted and all iron pumps. Standard fitted pumps are the same as bronze fitted except that the impeller only is cast iron rather than bronze.

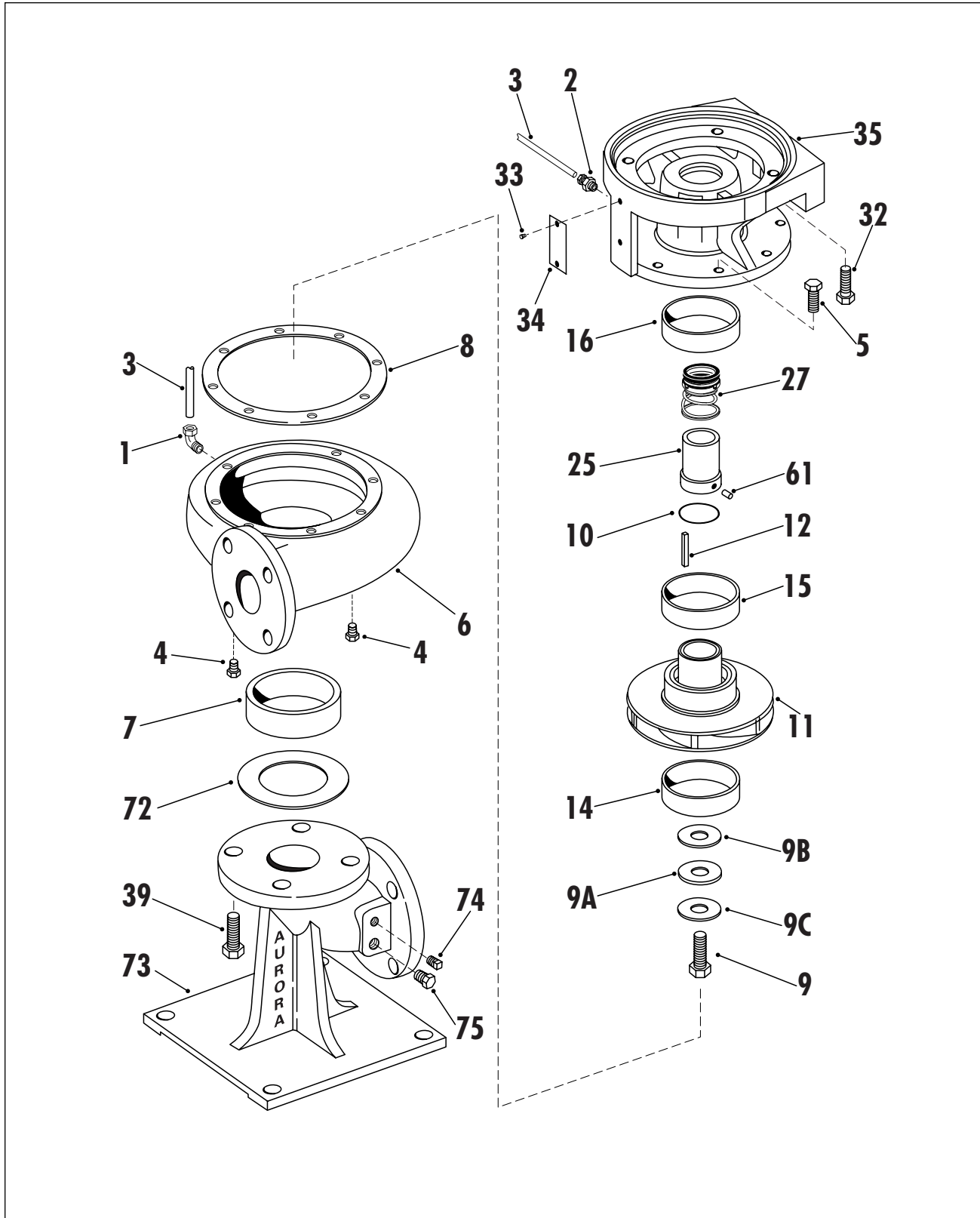
Power Frame #1 - use **(S)** parts.
Power Frame #2 - use **(L)** parts.
Power Frame #3 - use **(L)** parts.

MODEL 341A
PIECE NUMBERS

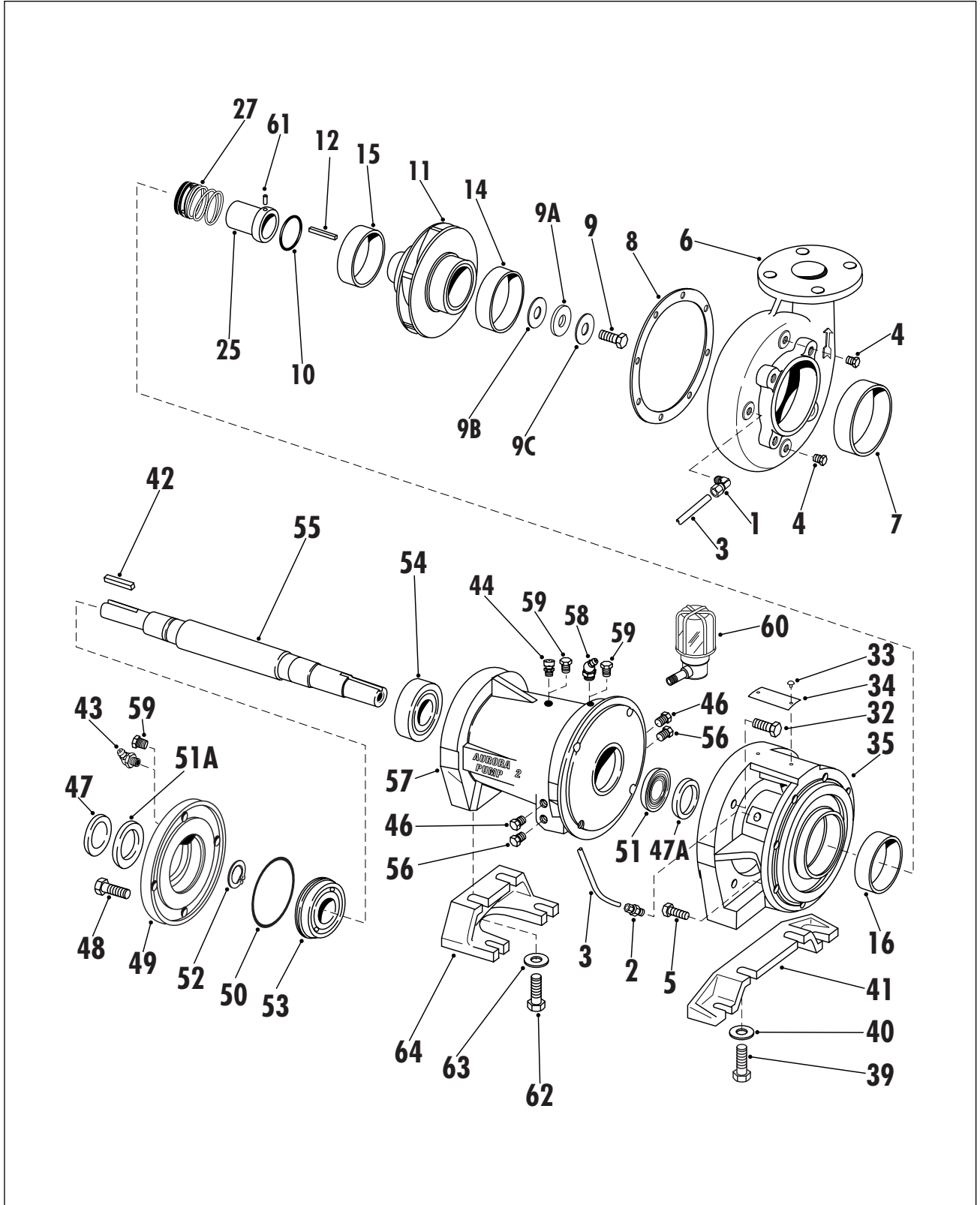
SUPERSEDES 340P PAGE 3
DATED JUNE 1998



340A SERIES
MODEL 342A
PIECE NUMBERS



MODEL 344A
PIECE NUMBERS



340A SERIES
MODELS 341A - 342A- 344A
1-1/4 x 1-1/2 x 7 - 4 x 4 x 7B

PARTS LIST

PC. NO.	DESCRIPTION	QTY	PART NO.	MATERIAL		
				B.F.		A.I.
1	COMPRESSION ELBOW	1	868-3360	190		087
2	COMPRESSION CONNECTOR	1	868-3359	190		087
3	TUBING	1	872-0124	175		087
4	PIPE PLUG	3	600-0002	087		087
5	CAPSCREW	8	168-0381	082		082
6	CASING					
	1-1/4 x 1-1/2 x 7	1	180-2138	010		010
	1-1/2 x 2 x 7	1	180-2140	010		010
	2 x 2-1/2 x 7A & B	1	180-2142	010		010
	2-1/2 x 3 x 7A & B	1	180-2144	010		010
	4 x 4 x 7A & B	1	180-2146	010		010
7	VERTICAL					
	1-1/4 x 1-1/2 x 7	1	180-2196	010		010
	1-1/2 x 2 x 7	1	180-2197	010		010
7	CASE RING					
	1-1/4 x 1-1/2 x 7	1	676-1150	208		010
	1-1/2 x 2 x 7	1	676-1151	208		010
	2 x 2-1/2 x 7A & B	1	676-1152	208		010
	2-1/2 x 3 x 7A & B	1	676-1152	208		010
8	GASKET	1	364-1014	603		603
9	CAPSCREW (S) (L)	1	168-0382	113		113
		1	168-0490	113		113
9A	WASHER (S) (L)	1	908-0603	087		087
		1	908-0604	087		087
9B	GASKET (S) (L)	1	364-2034	603		603
		1	364-2035	603		603
9C	CAPSCREW SEAL (S) (L)	1	908-1290	999		999
		1	908-1292	999		999
10	O-RING (S) (L)	1	364-0409	457		457
		1	364-0414	457		457
11	IMPELLER (S)	1	443-0407	225		010
		1	443-0409	225		010
		1	443-0411	225		010
		1	443-0415	225		010
		1	443-2034	225		010
		1	443-0417	225		010
		1	443-0425	225		010
		1	443-0423	225		010
	IMPELLER (L)	1	443-0413	225		010
		1	443-2035	225		010
		1	443-0419	225		010
		1	443-0427	225		010
		1	443-0472	225		010
11A	IMPELLER (S)*	1	443-0408	225		010
		1	443-0410	225		010
		1	443-0412	225		010
		1	443-0416	225		010
		1	443-1775	225		010

PC. NO.	DESCRIPTION	QTY	PART NO.	MATERIAL		
				B.F.	A.I.	
11A	IMPELLER (S)* 2-1/2 x 3 x 7B 4 x 4 x 7A 4 x 4 x 7B	1	443-0418	225		010
		1	443-0426	225		010
		1	443-0424	225		010
11A	IMPELLER (L)* 2 x 2-1/2 x 7A 2-1/2 x 3 x 7A 2-1/2 x 3 x 7B 4 x 4 x 7A 4 x 4 x 7B	1	443-0414	225		010
		1	443-1776	225		010
		1	443-0420	225		010
		1	443-0428	225		010
		1	443-0471	225		010
12	IMPELLER KEY (S) (L)	1	472-0201	087		087
		1	472-0247	087		087
14	IMPELLER RING (OPTIONAL) 1-1/4 x 1-1/2 x 7 1-1/2 x 2 x 7 2 x 2-1/2 x 7A 2 x 2-1/2 x 7B 2-1/2 x 3 x 7A 2-1/2 x 3 x 7B 4 x 4 x 7A 4 x 4 x 7B	1	676-1145	208		010
		1	676-1146	208		010
		1	676-1133	208		010
		1	676-1133	208		010
		1	676-1133	208		010
		1	676-1133	208		010
		1	676-1140	208		010
		1	676-1140	208		010
15	IMPELLER RING (OPTIONAL) 2 x 2-1/2 x 7A 2 x 2-1/2 x 7B 2-1/2 x 3 x 7A 2-1/2 x 3 x 7B 4 x 4 x 7A 4 x 4 x 7B	1	676-1133	208		010
		1	676-1133	208		010
		1	676-1133	208		010
		1	676-1133	208		010
		1	676-1133	208		010
		1	676-1133	208		010
		1	676-1133	208		010
16	RING (NOT REQUIRED)					
25	SLEEVE (S) (L)	1	756-0077	208		104
		1	756-0078	208		104
27	SEAL (S) (L)	1	712-0907	749		749
		1	712-0910	749		749
32	CAPSCREW MTR. FR. 143JM - 184JM 213JM - 256JM	4	168-0386	082		082
		4	168-0490	082		082
33	U DRIVE SCREW	2	708-0013	365		365
34	NAMEPLATE	1	532-0045	114		114
35	BRACKET (341A)	1	116-0192	010		010
		1	116-0194	010		010
		1	116-0197	010		010
		1	116-0476	010		010
	BRACKET (342A)	1	116-0192	010		010
		1	116-0194	010		010
		1	116-0197	010		010
		1	116-0197	010		010

*MACHINED FOR OPTIONAL RING NUMBER 14 & 15

340A SERIES
MODELS 341A - 342A- 344A
1-1/4 x 1-1/2 x 7 - 4 x 4 x 7B

SECTION 340P PAGE 7
 DATED MARCH 2004
 SUPERSEDES 340P PAGE 7
 DATED JUNE 1998

PARTS LIST

PC. NO.	DESCRIPTION	QTY	PART NO.	MATERIAL		
				B.F.	A.I.	
35	BRACKET (342A)					
	284JM - 326JM	1	116-0476	010	010	
	BRACKET (344A)					
	POWER FRAME #1	1	116-0192	010	010	
	POWER FRAME #2	1	116-0197	010	010	
39	CAPSCREW (341A)					
	143JM - 184JM	3	168-0488	082	082	
	213JM - 256JM	NOT REQUIRED				
	CAPSCREW (342A)					
	1-1/4 x 1-1/2 x 7	4	168-0490	082	082	
	1-1/2 x 2 x 7	4	168-0560	082	082	
	2 x 2-1/2 x 7A & B	4	168-0562	082	082	
	2-1/2 x 3 X 7A & B	4	168-0562	082	082	
	4 x 4 x 7A & B	4	168-0564	082	082	
	CAPSCREW (344A)					
	POWER FRAME #1	3	168-0488	082	082	
	POWER FRAME #2	2	168-0490	082	082	
	40	WASHER (341A)				
		143JM - 184JM	3	908-0114	080	080
213JM - 256JM		NOT REQUIRED				
WASHER (342A)		NOT REQUIRED				
WASHER (344A)						
POWER FRAME #1		3	908-0114	080	080	
POWER FRAME #2		2	908-0114	080	080	
41		SUPPORT (341A)				
	143JM - 184JM	1	820-0184	010	010	
	213JM - 256JM	NOT REQUIRED				
	SUPPORT (344A)					
	POWER FRAME #1	1	820-1441	087	087	
	POWER FRAME #2	1	820-0186	010	010	
42	DRIVE KEY (344A)					
	POWER FRAME #1	1	472-0206	087	087	
	POWER FRAME #2	1	472-0247	087	087	
43	GREASE FITTING					
	POWER FRAME #1 & #2	1	508-0005	651	651	
44	VENT TUBE					
	POWER FRAME #1 & #2	1	864-0051	656	656	
46	PROTECTOR					
	POWER FRAME #1 & #2	1	624-0010	503	503	
47	SLINGER					
	POWER FRAME #1	1	764-1015	478	478	
	POWER FRAME #2	1	764-1021	478	478	
47A	SLINGER					
	POWER FRAME #1	1	764-1015	478	478	
	POWER FRAME #2	1	764-1021	478	478	
48	CAPSCREW					
	POWER FRAME #1	4	168-0388	082	082	
	POWER FRAME #2	4	168-0492	082	082	
49	BEARING CAP					
	POWER FRAME #1	1	164-0470	010	010	
	POWER FRAME #2	1	164-0471	010	010	

PC. NO.	DESCRIPTION	QTY	PART NO.	MATERIAL	
				B.F.	A.I.
50	O-RING				
	POWER FRAME #1	1	364-0423	457	457
	POWER FRAME #2	1	364-0432	457	457
51	SEAL, GREASE LUBE				
	POWER FRAME #1	1	712-0231	653	653
	POWER FRAME #2	1	712-0233	653	653
	SEAL, OIL LUBE				
	POWER FRAME #1	1	712-0016	653	653
	POWER FRAME #2	1	712-0054	653	653
51A	SEAL, GREASE LUBE				
	POWER FRAME #1	1	712-0231	653	653
	POWER FRAME #2	1	712-0233	653	653
	SEAL, OIL LUBE				
	POWER FRAME #1	1	712-0016	653	653
	POWER FRAME #2	1	712-0054	653	653
52	RET. RING				
	POWER FRAME #1	1	676-0929	088	088
	POWER FRAME #1	1	676-0938	088	088
53	O.B. BEARING				
	POWER FRAME #1				
	STANDARD OPEN	1	068-2206	647	647
	SEALED PERM LUBE	1	068-2219	647	647
	POWER FRAME #2				
	STANDARD OPEN	1	068-2308	647	647
	SEALED PERM LUBE	1	068-2220	647	647
54	I.B. BEARING				
	POWER FRAME #1				
	STANDARD OPEN	1	068-1907	647	647
	SEALED PERM LUBE	1	068-0114	647	647
	POWER FRAME #2				
	STANDARD OPEN	1	068-0159	647	647
	SEALED PERM LUBE	1	068-2018	647	647
55	SHAFT				
	POWER FRAME #1	1	728-0121	063	063
	POWER FRAME #2	1	728-0122	063	063
56	PROTECTOR				
	POWER FRAME #1 & #2	2	624-0010	503	503
57	FRAME				
	GREASE				
	POWER FRAME #1	1	356-0201	010	010
	OIL LUBE				
	POWER FRAME #1	1	356-0231	010	010
	OIL LUBE				
	POWER FRAME #2	1	356-0232	010	010
	GREASE				
	POWER FRAME #2	1	356-0202	010	010
58	GREASE FITTING				
	POWER FRAME #1 & #2	1	508-0001	651	651

340A SERIES
MODELS 341A - 342A- 344A
1-1/4 x 1-1/2 x 7 - 4 x 4 x 7B

PARTS LIST

PC. NO.	DESCRIPTION	QTY	PART NO.	MATERIAL		
				B.F.		A.I.
59	PIPE PLUG POWER FRAME #1 & #2	2	600-0001	087		087
60	OILER POWER FRAME #1 & #2	1	552-0029	652		652
61	PIN	INCLUDED WITH NO. 25				
62	CAPSCREW POWER FRAME #1 POWER FRAME #2	1 2	168-0490 168-0490	080 080		080 080
63	WASHER POWER FRAME #1 POWER FRAME #2	1 1	908-0114 908-0114	080 080		080 080
64	SUPPORT POWER FRAME #1 POWER FRAME #2	1 1	820-0187 820-0188	010 010		010 010
72	GASKET 1-1/4 x 1-1/2 x 7 1-1/2 x 2 x 7 2 x 2-1/2 x 7A & 7B 2-1/2 x 3 x 7A & 7B 4 x 4 x 7A & 7B	1 1 1 1 1	364-0602 364-0603 364-0604 364-0605 364-0607	603 603 603 603 603		603 603 603 603 603
73	BASE 1-1/4 x 1-1/2 x 7 1-1/2 x 2 x 7 2 x 2-1/2 x 7A & B 2-1/2 x 3 x 7A & B 4 x 4 x 7A & B	1 1 1 1 1	816-1102 816-1103 816-1104 816-1105 816-1106	010 010 010 010 010		010 010 010 010 010
74	PIPE PLUG	1	600-0002	087		087
75	PIPE PLUG 1-1/4 x 1-1/2 x 7 1-1/2 x 2 x 7 2 x 2-1/2 x 7A & 7B 2-1/2 x 3 x 7A & 7B 4 x 4 x 7A & 7B	1 1 1 1 1	600-0002 600-0003 600-0003 600-0004 600-0004	087 087 087 028 028		087 087 087 028 028
	(NOT SHOWN)					
	SEAL KIT (S)	1	476-0250	644		
	(INCLUDES PIECE NO'S 8, 9, 9A, 9B, 9C, 10, 12, 25, 27)					
	SEAL KIT (L)	1	476-0253	644		

340A SERIES
MODELS 341A - 342A - 344A
1-1/4 x 1-1/2 x 9B - 6 x 6 x 9

SECTION 340P PAGE 9
 DATED MARCH 2004
 SUPERSEDES 340P PAGE 9
 DATED JUNE 1998

PARTS LIST

PC. NO.	DESCRIPTION	QTY	PART NO.	MATERIAL		
				B.F.		A.I.
1	COMPRESSION ELBOW	1	868-3360	190		087
2	COMPRESSION CONNECTOR	1	868-3359	190		087
3	TUBING	1	872-0124	175		087
4	PIPE PLUG	3	600-0002	087		087
5	CAPSCREW	8	168-0487	082		082
6	CASING					
	1-1/4 x 1-1/2 x 9B	1	180-2148	010		010
	1-1/2 x 2 x 9A	1	180-2149	010		010
	1-1/2 x 2 x 9B	1	180-2149	010		010
	1-1/2 x 2 x 9C	1	180-2151	010		010
	2 x 2-1/2 x 9	1	180-2152	010		010
	2-1/2 x 3 x 9	1	180-2153	010		010
	3 x 4 x 9A	1	180-2351	010		010
	3 x 4 x 9B	1	180-2351	010		010
	4 x 5 x 9A	1	180-2156	010		010
	4 x 5 x 9B	1	180-2157	010		010
	6 x 6 x 9	1	180-2159	010		010
	VERTICAL					
	1-1/4 x 1-1/2 x 9B	1	180-2198	010		010
	1-1/2 x 2 x 9A	1	180-2199	010		010
	1-1/2 x 2 x 9B	1	180-2199	010		010
	1-1/2 x 2 x 9C	1	180-2200	010		010
7	CASE RING					
	1-1/4 x 1-1/2 x 9B	1	676-1150	208		010
	1-1/2 x 2 x 9A	1	676-1151	208		010
	1-1/2 x 2 x 9B	1	676-1151	208		010
	1-1/2 x 2 x 9C	1	676-1151	208		010
	2 x 2-1/2 x 9	1	676-1152	208		010
	2-1/2 x 3 x 9	1	676-1152	208		010
	3 x 4 x 9A	1	676-1154	208		010
	3 x 4 x 9B	1	676-1154	208		010
	4 x 5 x 9A	1	676-1154	208		010
	4 x 5 x 9B	1	676-1155	208		010
	6 x 6 x 9	1	676-1155	208		010
8	GASKET	1	364-1015	603		603
9	CAPSCREW (S)	1	168-0382	113		113
	(L)	1	168-0490	113		113
9A	WASHER (S)	1	908-0603	087		087
	(L)	1	908-0604	087		087
9B	GASKET (S)	1	364-2034	603		603
	(L)	1	364-2035	603		603
9C	CAPSCREW (S)	1	908-1290	999		999
	SEAL (L)	1	908-1292	999		999
10	O-RING (S)	1	364-0409	457		457
	(L)	1	364-0414	457		457
11	IMPELLER (S)					
	1-1/4 x 1-1/2 x 9B	1	443-0431	225		010
	1-1/2 x 2 x 9A	1	443-0437	225		010
	1-1/2 x 2 x 9B	1	443-0435	225		010
	1-1/2 x 2 x 9C	1	443-0437	225		010
	2 x 2-1/2 x 9	1	443-0441	225		010
	2-1/2 x 3 x 9	1	443-0445	225		010

PC. NO.	DESCRIPTION	QTY	PART NO.	MATERIAL		
				B.F.		A.I.
11	IMPELLER (S)					
	3 x 4 x 9A	1	443-1776	225		010
	3 x 4 x 9B	1	443-1762	225		010
	4 x 5 x 9A	1	443-1777	225		010
	4 x 5 x 9B	1	443-0457	225		010
	6 x 6 x 9	1	443-0465	225		010
11	IMPELLER (L)					
	1-1/2 x 2 x 9C	1	443-0439	225		010
	2 x 2-1/2 x 9	1	443-0443	225		010
	2-1/2 x 3 x 9	1	443-0447	225		010
	3 x 4 x 9A	1	443-1768	225		010
	3 x 4 x 9B	1	443-1764	225		010
	4 x 5 x 9A	1	443-1752	225		010
	4 x 5 x 9B	1	443-0459	225		010
	6 x 6 x 9	1	443-0467	225		010
11A	IMPELLER (S)*					
	1-1/4 x 1-1/2 x 9B	1	443-0432	225		010
	1-1/2 x 2 x 9A	1	443-0438	225		010
	1-1/2 x 2 x 9B	1	443-0436	225		010
	1-1/2 x 2 x 9C	1	443-0438	225		010
	2 x 2-1/2 x 9	1	443-0442	225		010
	2-1/2 x 3 x 9	1	443-0446	225		010
	3 x 4 x 9A	1	443-1767	225		010
	3 x 4 x 9B	1	443-1763	225		010
	4 x 5 x 9A	1	443-1778	225		010
	4 x 5 x 9B	1	443-0458	225		010
	6 x 6 x 9	1	443-0466	225		010
11A	IMPELLER (L)*					
	1-1/2 x 2 x 9C	1	443-0440	225		010
	2 x 2-1/2 x 9	1	443-0444	225		010
	2-1/2 x 3 x 9	1	443-0448	225		010
	3 x 4 x 9A	1	443-1769	225		010
	3 x 4 x 9B	1	443-1765	225		010
	4 x 5 x 9A	1	443-1753	225		010
	4 x 5 x 9B	1	443-0460	225		010
	6 x 6 x 9	1	443-0468	225		010
12	IMPELLER KEY (S)	1	472-0201	087		087
	(L)	1	472-0247	087		087
14	IMPELLER RING (OPTIONAL)					
	1-1/4 x 1-1/2 x 9B	1	676-1145	208		010
	1-1/2 x 2 x 9	1	676-1146	208		010
	2 x 2-1/2 x 9	1	676-1133	208		010
	2-1/2 x 3 x 9	1	676-1133	208		010
	3 x 4 x 9A & B	1	676-1140	208		010
	4 x 5 x 9A	1	676-1140	208		010
	4 x 5 x 9B	1	676-1141	208		010
	6 x 6 x 9	1	676-1141	208		010

*MACHINED FOR OPTIONAL RING NUMBER 14 & 15

340A SERIES
MODELS 341A - 342A - 344A
1-1/4 x 1-1/2 x 9B - 6 x 6 x 9

PARTS LIST

PC. NO.	DESCRIPTION	QTY	PART NO.	MATERIAL		
				B.F.		A.I.
15	IMPELLER RING (OPTIONAL)					
	2 x 2-1/2 x 9	1	676-1133	208		010
	2-1/2 x 3 x 9	1	676-1133	208		010
	3 x 4 x 9A	1	676-1156	208		010
	3 x 4 x 9B	1	676-1156	208		010
	4 x 5 x 9A	1	676-1156	208		010
	4 x 5 x 9B	1	676-1156	208		010
	6 x 6 x 9	1	676-1156	208		010
16	RING					
	2 x 2-1/2 x 9	1	676-0003	010		010
	2-1/2 x 3 x 9	1	676-0003	010		010
25	SLEEVE (S)	1	756-0077	208		104
	(L)	1	756-0078	208		104
27	SEAL (S)	1	712-0907	749		749
	(L)	1	712-0910	749		749
32	CAPSCREW MTR. FR.					
	143JM - 184JM	4	168-0386	082		082
	213JM - 256JM	4	168-0490	082		082
33	U DRIVE SCREW	2	708-0013	365		365
34	NAMEPLATE	1	532-0045	114		114
35	BRACKET (341A)					
	143JM - 184JM	1	116-0193	010		010
	213JM - 215JM	1	116-0195	010		010
	254JM - 256JM	1	116-0198	010		010
	284JM - 326JM	1	116-0477	010		010
	BRACKET (342A)					
	143JM - 184JM	1	116-0193	010		010
	213JM - 215JM	1	116-0195	010		010
	254JM - 256JM	1	116-0198	010		010
	284JM - 326JM	1	116-0477	010		010
	BRACKET (344A)					
	POWER FRAME #1	1	116-0193	010		010
	POWER FRAME #2 & #3	1	116-0198	010		010
	39	CAPSCREW (341A)				
143JM - 184JM		3	168-0488	082		082
213JM - 256JM						
CAPSCREW (342A)						
1-1/4 x 1-1/2 x 9B		4	168-0490	082		082
1-1/2 x 2 x 9		4	168-0560	082		082
2 x 2-1/2 x 9		4	168-0562	082		082
2-1/2 x 3 x 9		4	168-0562	082		082
3 x 4 x 9		4	168-0564	082		082
4 x 5 x 9A & B		4	168-0564	082		082
6 x 6 x 9		4	168-0634	082		082
CAPSCREW (344A)						
POWER FRAME #1		3	168-0488	082		082
POWER FRAME #2 & #3		2	168-0490	082		082

PC. NO.	DESCRIPTION	QTY	PART NO.	MATERIAL		
				B.F.		A.I.
40	WASHER (341A)					
	143JM - 184JM	3	908-0114	080		080
	213JM - 256JM					
	WASHER (342A)					
	WASHER (344A)					
	POWER FRAME #1	3	908-0114	080		080
	POWER FRAME #2 & #3	2	908-0114	080		080
41	SUPPORT (341A)					
	143JM - 184JM	1	820-0184	010		010
	213JM - 256JM					
	SUPPORT (344A)					
	POWER FRAME #1	1	820-1441	087		087
POWER FRAME #2 & #3	1	820-0186	010		010	
42	DRIVE KEY (344A)					
	POWER FRAME #1	1	472-0206	087		087
	POWER FRAME #2	1	472-0247	087		087
43	GREASE FITTING					
	POWER FRAME #1, #2 & #3	1	508-0005	651		651
44	VENT TUBE	1	864-0051	656		656
46	PROTECTOR	2	624-0010	503		503
47	SLINGER					
	POWER FRAME #1	1	764-1015	478		478
	POWER FRAME #2 & #3	1	764-1021	478		478
47A	SLINGER					
	POWER FRAME #1	1	764-1015	478		478
	POWER FRAME #2	1	764-1021	478		478
	POWER FRAME #3	1	764-1026	478		478
48	CAPSCREW					
	POWER FRAME #1	4	168-0388	082		082
	POWER FRAME #2 & #3	4	168-0492	082		082
49	BEARING CAP					
	POWER FRAME #1	1	164-0470	010		010
	POWER FRAME #2	1	164-0471	010		010
	POWER FRAME #3	1	164-0472	010		010
50	O-RING					
	POWER FRAME #1	1	364-0423	457		457
	POWER FRAME #2	1	364-0432	457		457
	POWER FRAME #3	1	364-0438	457		457
51	SEAL					
	POWER FRAME #1	1	712-0231	653		653
	POWER FRAME #2 & #3	1	712-0233	653		653
	OIL LUBE					
	POWER FRAME #1	1	712-0016	653		653
POWER FRAME #2 & #3	1	712-0054	653		653	

340A SERIES
MODELS 341A - 342A - 344A
1-1/4 x 1-1/2 x 9B - 6 x 6 x 9

SECTION 340P PAGE 11
 DATED MARCH 2004
 SUPERSEDES 340P PAGE 11
 DATED JUNE 1998

PARTS LIST

PC. NO.	DESCRIPTION	QTY	PART NO.	MATERIAL		
				B.F.		A.I.
51A	SEAL					
	POWER FRAME #1	1	712-0231	653		653
	POWER FRAME #2	1	712-0233	653		653
	POWER FRAME #3	1	712-0234	653		653
	OIL LUBE					
	POWER FRAME #1	1	712-0016	653		653
	POWER FRAME #2	1	712-0054	653		653
	POWER FRAME #3	1	712-0056	653		653
52	RET. RING					
	POWER FRAME #1	1	676-0929	088		088
	POWER FRAME #2	1	676-0938	088		088
	POWER FRAME #3	1	676-0944	088		088
53	O.B. BEARING					
	POWER FRAME #1					
	STANDARD OPEN	1	068-2206	647		647
	SEALED PERM LUBE	1	068-2219	647		647
	POWER FRAME #2					
	STANDARD OPEN	1	068-2308	647		647
	SEALED PERM LUBE	1	068-2220	647		647
	POWER FRAME #3					
STANDARD OPEN	1	068-2310	647		647	
SEALED PERM LUBE	1	068-2221	647		647	
54	I.B. BEARING					
	POWER FRAME #1					
	STANDARD OPEN	1	068-1907	647		647
	SEALED PERM LUBE	1	068-0114	647		647
	POWER FRAME #2					
	STANDARD OPEN	1	068-0159	647		647
	SEALED PERM LUBE	1	068-2018	647		647
	POWER FRAME #3					
STANDARD OPEN	1	068-0161	647		647	
SEALED PERM LUBE	1	068-2022	647		647	
55	SHAFT					
	POWER FRAME #1	1	728-0121	063		063
	POWER FRAME #2	1	728-0122	063		063
	POWER FRAME #3	1	728-0123	063		063
56	PROTECTOR					
	POWER FRAME #1, #2 & #3	2	624-0010	503		503
57	FRAME					
	OIL LUBE					
	POWER FRAME #1	1	356-0231	010		010
	POWER FRAME #2	1	356-0232	010		010
	POWER FRAME #3	1	356-0233	010		010
	GREASE					
	POWER FRAME #1	1	356-0201	010		010
	POWER FRAME #2	1	356-0202	010		010
POWER FRAME #3	1	356-0203	010		010	

PC. NO.	DESCRIPTION	QTY	PART NO.	MATERIAL		
				B.F.		A.I.
58	GREASE FITTING					
	POWER FRAME #1, #2 & #3	1	508-0001	651		651
59	PIPE PLUG					
	POWER FRAME #1, #2 & #3	2	600-0001	087		087
60	OILER					
	POWER FRAME #1, #2 & #3	1	552-0029	652		652
61	PIN			INCLUDED WITH NO. 25		
62	CAPSCREW					
	POWER FRAME #1	1	168-0490	082		082
	POWER FRAME #2 & #3	2	168-0490	082		082
63	WASHER					
	POWER FRAME #1	1	908-0114	080		080
	POWER FRAME #2 & #3	1	908-0114	080		080
64	SUPPORT					
	POWER FRAME #1	1	820-0121	010		010
	POWER FRAME #2 & #3	1	820-0189	010		010
72	GASKET					
	1-1/4 x 1-1/2 x 9B	1	364-0602	603		603
	1-1/2 x 2 x 9A, B & C	1	364-0603	603		603
	2 x 2-1/2 x 9	1	364-0604	603		603
	2-1/2 x 3 x 9	1	364-0605	603		603
	3 x 4 x 9A & B	1	364-0607	603		603
	4 x 5 x 9A & B	1	364-0608	603		603
6 x 6 x 9	1	364-0609	603		603	
73	BASE					
	1-1/4 x 1-1/2 x 9B	1	816-1102	010		010
	1-1/2 x 2 x 9A, B & C	1	816-1103	010		010
	2 x 2-1/2 x 9	1	816-1104	010		010
	2-1/2 x 3 x 9	1	816-1105	010		010
	3 x 4 x 9A & B	1	816-1106	010		010
	4 x 5 x 9A & B	1	816-1107	010		010
6 x 6 x 9	1	816-1108	010		010	
74	PIPE PLUG	1	600-0002	087		087
75	PIPE PLUG					
	1-1/4 x 1-1/2 x 9B	1	600-0002	087		087
	1-1/2 x 2 x 9A, B & C	1	600-0003	087		087
	2 x 2-1/2 x 9	1	600-0003	087		087
	2-1/2 x 3 x 9	1	600-0004	028		028
	3 x 4 x 9A & B	1	600-0004	028		028
	4 x 5 x 9A & B	1	600-0022	028		028
6 x 6 x 9	1	600-0022	028		028	
	(NOT SHOWN)					
	SEAL KIT (S)	1	476-0250	644		
	(INCLUDES PIECE NO S 8, 9, 9A, 9B, 9C, 10, 12, 25, 27)					
	SEAL KIT (L)	1	476-0253	644		

340A SERIES
MODELS 341A - 342A - 344A
1-1/2 x 2 x 11 - 6 x 6 x 11A

PARTS LIST

PC. NO.	DESCRIPTION	QTY	PART NO.	MATERIAL		
				B.F.		A.I.
1	COMPRESSION ELBOW	1	868-3360	190		087
2	COMPRESSION CONNECTOR	1	868-3359	190		087
3	TUBING	1	872-0124	175		087
4	PIPE PLUG	3	600-0002	087		087
5	CAPSCREW	8	168-0490	082		082
6	CASING					
	1-1/2 x 2 x 11	1	180-2353	010		010
	2 x 3 x 11	1	180-2354	010		010
	3 x 4 x 11	1	180-2371	010		010
	4 x 5 x 11	1	180-2356	010		010
	5 x 6 x 11	1	180-2357	010		010
	6 x 6 x 11	1	180-2172	010		010
	6 x 6 x 11A	1	180-2363	010		010
7	VERTICAL					
	1-1/2 x 2 x 11	1	180-2457	010		010
	CASE RING					
	1-1/2 x 2 x 11	1	676-1151	208		010
	2 x 3 x 11	1	676-1152	208		010
	3 x 4 x 11	1	676-1154	208		010
	4 x 5 x 11	1	676-1155	208		010
	5 x 6 x 11	1	676-1684	208		010
6 x 6 x 11	1	676-1684	208		010	
6 x 6 x 11A	1	676-1684	208		010	
8	GASKET	1	364-2109	603		603
	6 x 6 x 11 & 11A ONLY	1	364-1016	603		603
9	CAPSCREW (S)	1	168-0382	113		113
	(L)	1	168-0490	113		113
9A	WASHER (S)	1	908-0603	087		087
	(L)	1	908-0604	087		087
9B	GASKET (S)	1	364-2034	603		603
	(L)	1	364-2035	603		603
9C	CAPSCREW (S)	1	908-1290	999		999
	SEAL (L)	1	908-1292	999		999
10	O-RING (S)	1	364-0409	457		457
	(L)	1	364-0414	457		457
11	IMPELLER (S)					
	1-1/2 x 2 x 11	1	443-2511	225		010
	2 x 3 x 11	1	443-2387	225		010
	3 x 4 x 11	1	443-2388	225		010
	4 x 5 x 11	1	443-2389	225		010
	5 x 6 x 11	1	443-2390	225		010
	6 x 6 x 11	1	443-2390	225		010
	6 x 6 x 11A	1	443-2390	225		010

PC. NO.	DESCRIPTION	QTY	PART NO.	MATERIAL		
				B.F.		A.I.
11	IMPELLER (L)					
	1-1/2 x 2 x 11	1	443-2513	225		010
	2 x 3 x 11	1	443-2399	225		010
	3 x 4 x 11	1	443-2400	225		010
	4 x 5 x 11	1	443-2401	225		010
	5 x 6 x 11	1	443-2402	225		010
	6 x 6 x 11	1	443-2402	225		010
6 x 6 x 11A	1	443-2402	225		010	
11A	IMPELLER (S)*					
	1-1/2 x 2 x 11	1	443-2512	225		010
	2 x 3 x 11	1	443-2423	225		010
	3 x 4 x 11	1	443-2424	225		010
	4 x 5 x 11	1	443-2425	225		010
	5 x 11	1	443-2426	225		010
	6 x 11	1	443-2426	225		010
6 x 11A	1	443-2426	225		010	
11A	IMPELLER (L)*					
	1-1/2 x 2 x 11	1	443-2514	225		010
	2 x 3 x 11	1	443-2427	225		010
	3 x 4 x 11	1	443-2428	225		010
	4 x 5 x 11	1	443-2429	225		010
	5 x 11	1	443-2430	225		010
	6 x 11	1	443-2430	225		010
6 x 11A	1	443-2430	225		010	
12	IMPELLER KEY (S)	1	472-0201	087		087
	IMPELLER KEY (L)	1	472-0247	087		087
14	IMPELLER RING (OPTIONAL)					
	1-1/2 x 2 x 11	1	676-1146	208		010
	2 x 3 x 11	1	676-1133	208		010
	3 x 4 x 11	1	676-1140	208		010
	4 x 5 x 11	1	676-1141	208		010
	5 x 6 x 11	1	676-1143	208		010
	6 x 6 x 11	1	676-1143	208		010
6 x 6 x 11A	1	676-1143	208		010	
15	IMPELLER RING (OPTIONAL)					
	2 x 3 x 11	1	676-1133	208		010
	3 x 4 x 11	1	676-1156	208		010
	4 x 5 x 11	1	676-1156	208		010
	5 x 6 x 11	1	676-1156	208		010
	6 x 6 x 11	1	676-1156	208		010
6 x 6 x 11A	1	676-1156	208		010	
16	RING 2 x 3 x 11	1	676-0003	010		010

*MACHINED FOR OPTIONAL RING NUMBER 14 & 15

340A SERIES
MODELS 341A - 342A - 344A
1-1/2 x 2 x 11 - 6 x 6 x 11A

SECTION 340P PAGE 13
 DATED MARCH 2004
 SUPERSEDES 340P PAGE 13
 DATED JUNE 1998

PARTS LIST

PC. NO.	DESCRIPTION	QTY	PART NO.	MATERIAL			
				B.F.		A.I.	
25	SLEEVE (S)	1	756-0077	208		104	
		1	756-0078	208		104	
27	SEAL (S)	1	712-0907	749		749	
		1	712-0910	749		749	
32	CAPSCREW MTR. FR.						
	213JM - 215JM	4	168-0490	082		082	
	254JM - 256JM	4	168-0490	082		082	
	284JM - 326JM	4	168-0562	082		082	
33	U DRIVE SCREW	2	708-0013	365		365	
34	NAMEPLATE	1	532-0045	114		114	
35	BRACKET (341A) EXCEPT 6 x 6 x 11 AND 6 x 6 x 11A						
	213JM - 215JM	1	116-0465	010		010	
	254JM - 256JM	1	116-0466	010		010	
	284JM - 326JM	1	116-0467	010		010	
	BRACKET (342A) EXCEPT 6 x 6 x 11 AND 6 x 6 x 11A						
	213JM - 215JM	1	116-0465	010		010	
	254JM - 256JM	1	116-0466	010		010	
	284JM - 326JM	1	116-0467	010		010	
	BRACKET (344A) EXCEPT 6 x 6 x 11 AND 6 x 6 x 11A						
	POWER FRAME #2 & #3	1	116-0466	010		010	
	35	BRACKET (341A) 6 x 6 x 11 AND 6 x 6 x 11A ONLY					
		213JM - 215JM	1	116-0196	010		010
254JM - 256JM		1	116-0199	010		010	
BRACKET (342A) 6 x 6 x 11 AND 6 x 6 x 11A ONLY							
213JM - 215JM		1	116-0196	010		010	
254JM - 256JM		1	116-0199	010		010	
284JM - 326JM		1	116-0088	010		010	
BRACKET (344A) 6 x 6 x 11 AND 6 x 6 x 11A ONLY							
POWER FRAME #2 & #3		1	116-0199	010		010	
39		CAPSCREW (341A)					
		CAPSCREW (342A)					
		1-1/2 x 2 x 11	4	168-0560	082		082
	2 x 3 x 11	4	168-0562	082		082	
	3 x 4 x 11	8	168-0564	082		082	
	4 x 5 x 11	8	168-0634	082		082	
	5 x 6 x 11	8	168-0634	082		082	
	6 x 6 x 11	8	168-0634	082		082	
	6 x 6 x 11A	8	168-0634	082		082	
	CAPSCREW (344A)						
	POWER FRAME #2 & #3	2	168-0490	082		082	
	40	WASHER (341A) NOT REQUIRED					
WASHER (342A) NOT REQUIRED							
WASHER (344A)							
POWER FRAME #2 & #3		2	908-0114	080		080	
41	SUPPORT (341) NOT REQUIRED						
	SUPPORT (342) NOT REQUIRED						
	SUPPORT (344)						
	POWER FRAME #2 & #3	1	820-0186	010		010	
42	DRIVE KEY (344)						
	POWER FRAME #2 & #3	1	472-0247	087		087	

PC. NO.	DESCRIPTION	QTY	PART NO.	MATERIAL		
				B.F.		A.I.
43	GREASE FITTING					
	POWER FRAME #2 & #3	1	508-0005	651		651
47	SLINGER					
	POWER FRAME #2 & #3	1	764-1021	478		478
47A	SLINGER					
	POWER FRAME #2	1	764-1021	478		478
	POWER FRAME #3	1	764-1026	478		478
48	CAPSCREW					
	POWER FRAME #2 & #3	4	168-0492	082		082
49	BEARING CAP					
	POWER FRAME #2	1	164-0471	010		010
	POWER FRAME #3	1	164-0472	010		010
50	O-RING					
	POWER FRAME #2	1	364-0432	457		457
	POWER FRAME #3	1	364-0438	457		457
51	SEAL					
	POWER FRAME #2 & #3	1	712-0233	653		653
	OIL LUBE					
51A	POWER FRAME #2 & #3	1	712-0054	653		653
	SEAL					
	POWER FRAME #2	1	712-0233	653		653
51A	POWER FRAME #3	1	712-0234	653		653
	OIL LUBE					
	POWER FRAME #2	1	712-0054	653		653
51A	POWER FRAME #3	1	712-0056	653		653
	RETAINING RING					
	POWER FRAME #2	1	676-0938	088		088
52	POWER FRAME #3	1	676-0944	088		088
	O.B. BEARING					
	POWER FRAME #2					
53	STANDARD OPEN	1	068-2308	647		647
	SEALED PERM LUBE	1	068-2220	647		647
	POWER FRAME #3					
	STANDARD OPEN	1	068-2310	647		647
	SEALED PERM LUBE	1	068-2221	647		647
	54	I.B. BEARING				
POWER FRAME #2						
STANDARD OPEN		1	068-0159	647		647
SEALED PERM LUBE		1	068-2018	647		647
POWER FRAME #3						
STANDARD OPEN		1	068-0161	647		647
54	SEALED PERM LUBE	1	068-2022	647		647
	SHAFT					
	POWER FRAME #2	1	728-0122	063		063
55	POWER FRAME #3	1	728-0123	063		063

340A SERIES
MODELS 341A - 342A - 344A
1-1/2 x 2 x 11 - 6 x 6 x 11A

PARTS LIST

PC. NO.	DESCRIPTION	QTY	PART NO.	MATERIAL	
				B.F.	A.I.
57	FRAME				
	OIL LUBE				
	POWER FRAME #2	1	356-0232	010	010
	GREASE				
	POWER FRAME #2	1	356-0202	010	010
	OIL LUBE				
	POWER FRAME #3	1	356-0233	010	010
	GREASE				
	POWER FRAME #3	1	356-0203	010	010
58	GREASE FITTING				
	POWER FRAME #2 & #3	1	508-0001	651	651
60	OILER				
	POWER FRAME #2 & #3	1	552-0029	652	652
61	PIN INCLUDED WITH NO. 25				
62	CAPSCREW				
	POWER FRAME #2 & #3	2	168-0490	082	082
63	WASHER				
	POWER FRAME #2 & #3	1	908-0114	080	080
64	SUPPORT				
	POWER FRAME #2 & #3	1	820-0189	010	010
72	GASKET (342A)				
	1-1/2 x 3 x 11	1	364-0603	603	603
	2 x 3 x 11	1	364-0605	603	603
	3 x 4 x 11	1	364-0607	603	603
	4 x 5 x 11	1	364-0608	603	603
	5 x 6 x 11	1	364-0609	603	603
	6 x 6 x 11	1	364-0609	603	603
	6 x 6 x 11A	1	364-0609	603	603

PC. NO.	DESCRIPTION	QTY	PART NO.	MATERIAL	
				B.F.	A.I.
73	BASE (342A)				
	1-1/2 x 3 x 11	1	816-1103	010	010
	2 x 3 x 11	1	816-1105	010	010
	3 x 4 x 11	1	816-1106	010	010
	4 x 5 x 11	1	816-1107	010	010
	5 x 6 x 11	1	816-1108	010	010
	6 x 6 x 11	1	816-1108	010	010
	6 x 6 x 11A	1	816-1108	010	010
74	PIPE PLUG (342A)	1	600-0002	087	087
75	PIPE PLUG (342A)				
	1-1/2 x 3 x 11	1	600-0003	087	087
	2 x 3 x 11	1	600-0004	087	087
	3 x 4 x 11	1	600-0004	087	087
	4 x 5 x 11	1	600-0005	087	087
	5 x 6 x 11	1	600-0005	028	028
	6 x 6 x 11	1	600-0005	028	028
	6 x 6 x 11A	1	600-0005	028	028
	(NOT SHOWN)				
	SEAL KIT (S)	1	476-0250	644	
	(INCLUDES PIECE NO'S 8, 9, 9A, 9B, 9C, 10, 12, 25, 27)				
	SEAL KIT (L)	1	476-0253	644	

340A SERIES
MODELS 341A- 342A- 344A
1-1/2 x 12 - 6 x 6 x 12A

SECTION 340P PAGE 15
 DATED MARCH 2004
 SUPERSEDES 340P PAGE 15
 DATED JUNE 1998

PARTS LIST

PC. NO.	DESCRIPTION	QTY	PART NO.	MATERIAL	
				B.F.	A.I.
1	COMPRESSION ELBOW	1	868-3360	190	087
2	COMPRESSION CONNECTOR	1	868-3359	190	087
3	TUBING	1	872-0124	175	087
4	PIPE PLUG	3	600-0002	087	087
5	CAPSCREW	8	168-0489	082	082
6	CASING				
	1-1/2 x 2 x 12	1	180-2161	010	010
	2 x 2-1/2 x 12	1	180-2163	010	010
	2-1/2 x 3 x 12	1	180-2164	010	010
	3 x 4 x 12	1	180-2166	010	010
	4 x 5 x 12	1	180-2168	010	010
	5 x 6 x 12	1	180-2170	010	010
	6 x 6 x 12	1	180-2172	010	010
	6 x 6 x 12A	1	180-2363	010	010
	VERTICAL				
1-1/2 x 2 x 12	1	180-2201	010	010	
7	CASE RING				
	1-1/2 x 2 x 12	1	676-1151	208	010
	2 x 2-1/2 x 12	1	676-1152	208	010
	2-1/2 x 3 x 12	1	676-1152	208	010
	3 x 4 x 12	1	676-1154	208	010
	4 x 5 x 12	1	676-1155	208	010
	5 x 6 x 12	1	676-1684	208	010
	6 x 6 x 12	1	676-1684	208	010
6 x 6 x 12A	1	676-1684	208	010	
8	GASKET	1	364-1016	603	603
9	CAPSCREW	(S)	1 168-0382	113	113
		(L)	1 168-0490	113	113
9A	WASHER	(S)	1 908-0603	087	087
		(L)	1 908-0604	087	087
9B	GASKET	(S)	1 364-2034	603	603
		(L)	1 364-2035	603	603
9C	CAPSCREW SEAL	(S)	1 908-1290	999	999
		(L)	1 908-1292	999	999
10	O-RING	(S)	1 364-0409	457	457
		(L)	1 364-0414	457	457
11	IMPELLER	(S)	341& 342A ONLY		
			1 443-1734	225	010
			1 443-1735	225	010
			1 443-1736	225	010
			1 443-1737	225	010
11	IMPELLER	(L)			
			1 443-1725	225	010
			1 443-1726	225	010
			1 443-1727	225	010
			1 443-1728	225	010
	1 443-1729	225	010		

PC. NO.	DESCRIPTION	QTY	PART NO.	MATERIAL				
				B.F.	A.I.			
11	5 x 6 x 12	1	443-1730	225	010			
	6 x 6 x 12	1	443-1732	225	010			
	6 x 6 x 12A	1	443-1732	225	010			
11A	IMPELLER (S)*	341& 342A ONLY						
		1-1/2 x 2 x 12	1	443-1748	225	010		
		2 x 2-1/2 x 12	1	443-1749	225	010		
		2-1/2 x 3 x 12	1	443-1750	225	010		
		3 x 4 x 12	1	443-1751	225	010		
11A	IMPELLER (L)*	1-1/2 x 2 x 12	1	443-1739	225	010		
		2 x 2-1/2 x 12	1	443-1740	225	010		
		2-1/2 x 3 x 12	1	443-1741	225	010		
		3 x 4 x 12	1	443-1742	225	010		
		4 x 5 x 12	1	443-1743	225	010		
		5 x 6 x 12	1	443-1744	225	010		
		6 x 6 x 12	1	443-1746	225	010		
		6 x 6 x 12A	1	443-1746	225	010		
12	IMPELLER KEY (S)	(L)	1 472-0201	087	087			
		(L)	1 472-0247	087	087			
14	IMPELLER RING (OPTIONAL)	1-1/2 x 2 x 12	1	676-1146	208	010		
		2 x 2-1/2 x 12	1	676-1133	208	010		
		2-1/2 x 3 x 12	1	676-1133	208	010		
		3 x 4 x 12	1	676-1140	208	010		
		4 x 5 x 12	1	676-1141	208	010		
		5 x 6 x 12	1	676-1143	208	010		
		6 x 6 x 12	1	676-1143	208	010		
		6 x 6 x 12A	1	676-1143	208	010		
		15	IMPELLER RING (OPTIONAL)	2 x 2-1/2 x 12	1	676-1133	208	010
				2-1/2 x 3 x 12	1	676-1133	208	010
3 x 4 x 12	1			676-1156	208	010		
4 x 5 x 12	1			676-1156	208	010		
5 x 6 x 12	1			676-1156	208	010		
6 x 6 x 12	1			676-1156	208	010		
6 x 6 x 12A	1			676-1156	208	010		
16	RING	2 x 2-1/2 x 12	1	676-0003	010	010		
		2-1/2 x 3 x 12	1	676-0003	010	010		
25	SLEEVE	(S)	1 756-0077	208	104			
		(L)	1 756-0078	208	104			
27	SEAL	(S)	1 712-0907	749	749			
		(L)	1 712-0910	749	749			

*MACHINED FOR OPTIONAL RING NUMBER 14 & 15

340A SERIES
MODELS 341A- 342A- 344A
1-1/2 x 12 - 6 x 6 x 12A

PARTS LIST

PC. NO.	DESCRIPTION	QTY	PART NO.	MATERIAL			
				B.F.		A.I.	
32	CAPSCREW (341 & 342)						
	213JM - 215JM	4	168-0490	082		082	
	254JM - 256JM	4	168-0492	082		082	
	284JM - 326JM	4	168-0562	082		082	
	CAPSCREW (344) POWER FRAME #2 & #3	4	168-0492	082		082	
33	U DRIVE SCREW	2	708-0013	365		365	
34	NAMEPLATE	1	532-0045	114		114	
35	BRACKET (341A)						
	213JM - 215JM	1	116-0196	010		010	
	254JM - 256JM	1	116-0199	010		010	
	BRACKET (342A)						
	213JM - 215JM	1	116-0196	010		010	
	254JM - 256JM	1	116-0199	010		010	
	284JM - 326JM	1	116-0088	010		010	
	BRACKET (344A) POWER FRAME #2 & #3	1	116-0199	010		010	
	39	CAPSCREW (341A)	NOT REQUIRED				
		CAPSCREW (342A)					
1-1/2 x 2 x 12		4	168-0560	082		082	
2 x 2-1/2 x 12		4	168-0562	082		082	
2-1/2 x 3 x 12		4	168-0562	082		082	
3 x 4 x 12		4	168-0564	082		082	
4 x 5 x 12		4	168-0634	082		082	
5 x 6 x 12		4	168-0634	082		082	
6 x 6 x 12 & 12A		4	168-0634	082		082	
CAPSCREW (344A) POWER FRAME #2 & #3		2	168-0490	082		082	
40	WASHER (341A)	NOT REQUIRED					
	WASHER (342A)	NOT REQUIRED					
	WASHER (344A)						
	POWER FRAME #2 & #3	2	908-0114	080		080	
41	SUPPORT (341A)						
	213JM - 215JM	NOT REQUIRED					
	254JM - 256JM	NOT REQUIRED					
	SUPPORT (344) POWER FRAME #2 & #3	1	820-0186	010		010	
42	DRIVE KEY	1	472-0247	087		087	
43	GREASE FITTING	1	508-0005	657		651	
44	VENT TUBE	1	864-0051	656		656	
46	PROTECTOR	2	624-0010	503		503	
47	SLINGER						
	POWER FRAME #2 & #3	1	764-1021	478		478	
47A	SLINGER						
	POWER FRAME #2	1	764-1021	478		478	
	POWER FRAME #3	1	764-1026	478		478	

PC. NO.	DESCRIPTION	QTY	PART NO.	MATERIAL		
				B.F.	A.I.	
48	CAPSCREW POWER FRAME #2 & #3	4	168-0492	082		082
	49	BEARING CAP POWER FRAME #2	1	164-0471	010	
POWER FRAME #3		1	164-0472	010		010
50	O-RING POWER FRAME #2	1	364-0432	457		457
	POWER FRAME #3	1	364-0438	457		457
51	SEAL POWER FRAME #2 & #3	1	712-0233	653		653
	OIL LUBE POWER FRAME #2 & #3	1	712-0054	653		653
	51A	SEAL POWER FRAME #2	1	712-0233	653	
POWER FRAME #3		1	712-0234	653		653
OIL LUBE POWER FRAME #2		1	712-0054	653		653
POWER FRAME #3		1	712-0056	653		653
52	RETAINING RING POWER FRAME #2	1	676-0938	088		088
	POWER FRAME #3	1	676-0944	088		088
	53	O.B. BEARING POWER FRAME #2				
STANDARD OPEN		1	068-2308	647		647
SEALED PERM LUBE		1	068-2220	647		647
POWER FRAME #3						
STANDARD OPEN		1	068-2310	647		647
SEALED PERM LUBE		1	068-2221	647		647
54	I.B. BEARING POWER FRAME #2					
	STANDARD OPEN	1	068-0159	647		647
	SEALED PERM LUBE	1	068-2018	647		647
	POWER FRAME #3					
55	STANDARD OPEN	1	068-0161	647		647
	SEALED PERM LUBE	1	068-2022	647		647
55	SHAFT POWER FRAME #2	1	728-0122	063		063
	POWER FRAME #3	1	728-0123	063		063
	56	PROTECTOR	2	624-0010	503	

**340A SERIES
MODELS 341A- 342A- 344A
1-1/2 x 12 - 6 x 6 x 12A**

SECTION 340P PAGE 17
DATED MARCH 2004

SUPERSEDES 340P PAGE 17
DATED JUNE 1998

PARTS LIST

PC. NO.	DESCRIPTION	QTY	PART NO.	MATERIAL	
				B.F.	A.I.
57	FRAME				
	OIL LUBE				
	POWER FRAME #2	1	356-0232	010	010
	POWER FRAME #3	1	356-0233	010	010
	GREASE				
	POWER FRAME #2	1	356-0202	010	010
	POWER FRAME #3	1	356-0203	010	010
58	GREASE FITTING	1	508-0001	651	651
59	PIPE PLUG				
	POWER FRAME #2 & #3	2	600-0001	087	087
60	OILER	1	522-0029	652	652
61	PIN	INCLUDED WITH NO. 25			
62	CAPSCREW				
	POWER FRAME #2 & #3	2	168-0490	082	082
63	WASHER	2	908-0114	080	080
64	SUPPORT				
	POWER FRAME #2 & #3	1	820-0189	010	010
72	GASKET				
	1-1/2 x 2 x 12	1	364-0603	603	603
	2 x 2-1/2 x 12	1	364-0604	603	603
	2-1/2 x 3 x 12	1	364-0605	603	603
	3 x 4 x 12	1	364-0607	603	603
	4 x 5 x 12	1	364-0609	603	603
	5 x 6 x 12	1	364-0609	603	603
	6 x 6 x 12 & 12A	1	364-0609	603	603

PC. NO.	DESCRIPTION	QTY	PART NO.	MATERIAL	
				B.F.	A.I.
73	BASE				
	1-1/2 x 2 x 12	1	816-1103	010	010
	2 x 2-1/2 x 12	1	816-1104	010	010
	2-1/2 x 3 x 12	1	816-1105	010	010
	3 x 4 x 12	1	816-1106	010	010
	4 x 5 x 12	1	816-1108	010	010
	5 x 6 x 12	1	816-1108	010	010
	6 x 6 x 12 & 12A	1	816-1108	010	010
74	PIPE PLUG	1	600-0002	087	087
75	PIPE PLUG				
	1-1/2 x 2 x 12	1	600-0003	087	087
	2 x 2-1/2 x 12	1	600-0003	087	087
	2-1/2 x 3 x 12	1	600-0004	087	087
	3 x 4 x 12	1	600-0004	028	028
	4 x 5 x 12	1	600-0005	028	028
	5 x 6 x 12	1	600-0005	028	028
	6 x 6 x 12 & 12A	1	600-0005	028	028
	(NOT SHOWN)				
	SEAL KIT (S)	1	476-0250	644	
	(INCLUDES PIECE NO'S 8, 9, 9A, 9B, 9C, 10, 12, 25, 27)				
	SEAL KIT (L)	1	476-0253	644	

340A SERIES
MODELS 341A- 342A- 344A
6 x 6 x 12B - 6 x 8 x 15 - 8 x 10 x 15

PARTS LIST

PC. NO.	DESCRIPTION	QTY	PART NO.	MATERIAL		
				B.F.	A.I.	
1	COMP. ELBOW	1	868-3360	190	087	
2	COMP. CONN.	1	868-3359	190	087	
3	TUBING	1	872-0124	175	087	
4	PIPE PLUG	3	600-0002	087	087	
5	CAPSCREW					
	6x6x12B	8	168-0489	082	082	
	6x8x15	12	168-0636	082	082	
	8x10x15	12	168-0636	082	082	
6	CASING					
	6x6x12B	1	180-2516	010	010	
	6x8x15	1	180-2366	010	010	
	8x10x15	1	180-2367	010	010	
7	CASE RING					
	6x6x12B	1	676-2100	208	010	
	6x8x15	2	676-2036	222	010	
	8x10x15	2	676-2037	222	010	
8	GASKET					
	12"	1	364-1016	603	603	
	15"	1	364-0557	457	457	
9A	WASHER	1	908-1326	104	104	
9B	GASKET	1	364-2046	603	603	
10	O-RING	1	364-0419	457	457	
11	IMPELLER					
	6x6x12B, ELB	1	443-3086	208	010	
	6x8x15	1	443-3088	208	010	
	8x10x15	1	443-3090	208	010	
11A	IMPELLER					
	6x6x12B, ELB	1	443-3087	208	010	
	6x8x15	1	443-3089	208	010	
	8x10x15	1	443-3091	208	010	
12	IMPELLER KEY	1	472-0318	087	087	
14	IMPELLER RING, OPTIONAL					
	6x6x12B	1	676-2101	208	010	
	6x8x15	1	676-1053	208	010	
	8x10x15	1	676-1971	208	010	
15	IMPELLER RING, OPTIONAL					
	6x6x12B	1	676-2101	208	010	
	6x8x15	1	676-1053	208	010	
	8x10x15	1	676-1053	208	010	
25	SHAFT SLEEVE	1	756-0692	208	104	
27	MECHANICAL SEAL	1	712-1014	749	749	
32	CAPSCREW					
	326-405 TCZ	4	168-0564	082	082	
	444TCZ +	8	168-0566	082	082	
33	WASHER	2	708-0013	365	365	

PC. NO.	DESCRIPTION	QTY	PART NO.	MATERIAL		
				B.F.	A.I.	
34	NAME PLATE	1	532-0045	114	114	
35	BRACKET					
	12", 326-405 TCZ	1	116-0538	010	010	
	15", 326-405 TCZ	1	116-0537	010	010	
	15", 444 TCZ +	1	116-0539	010	010	

*MACHINED FOR OPTIONAL IMPELLER WEAR RINGS, ITEM 14 & 15
(ELB, EXTRA LARGE BORE)



NOTE:

Aurora Pump reserves the right to make revisions to its products and their specifications, and to this bulletin and related information without notice

Aurora Pumps

800 Airport Road
North Aurora, IL 60542
phone: 630-859-7000
fax: 630-859-7060