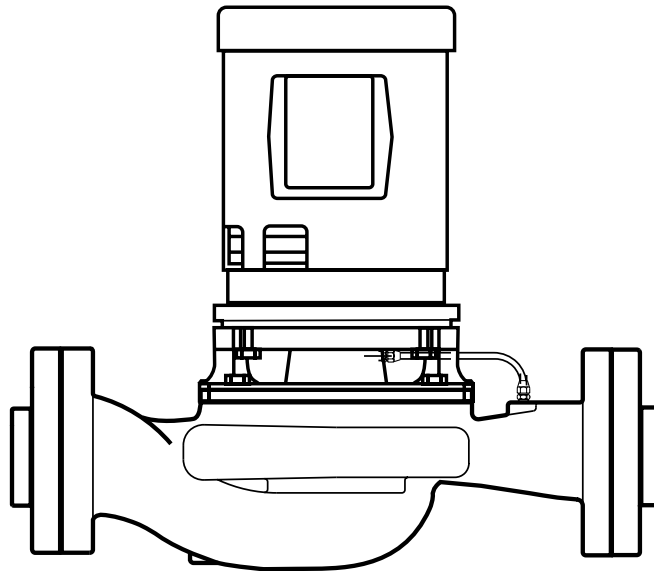
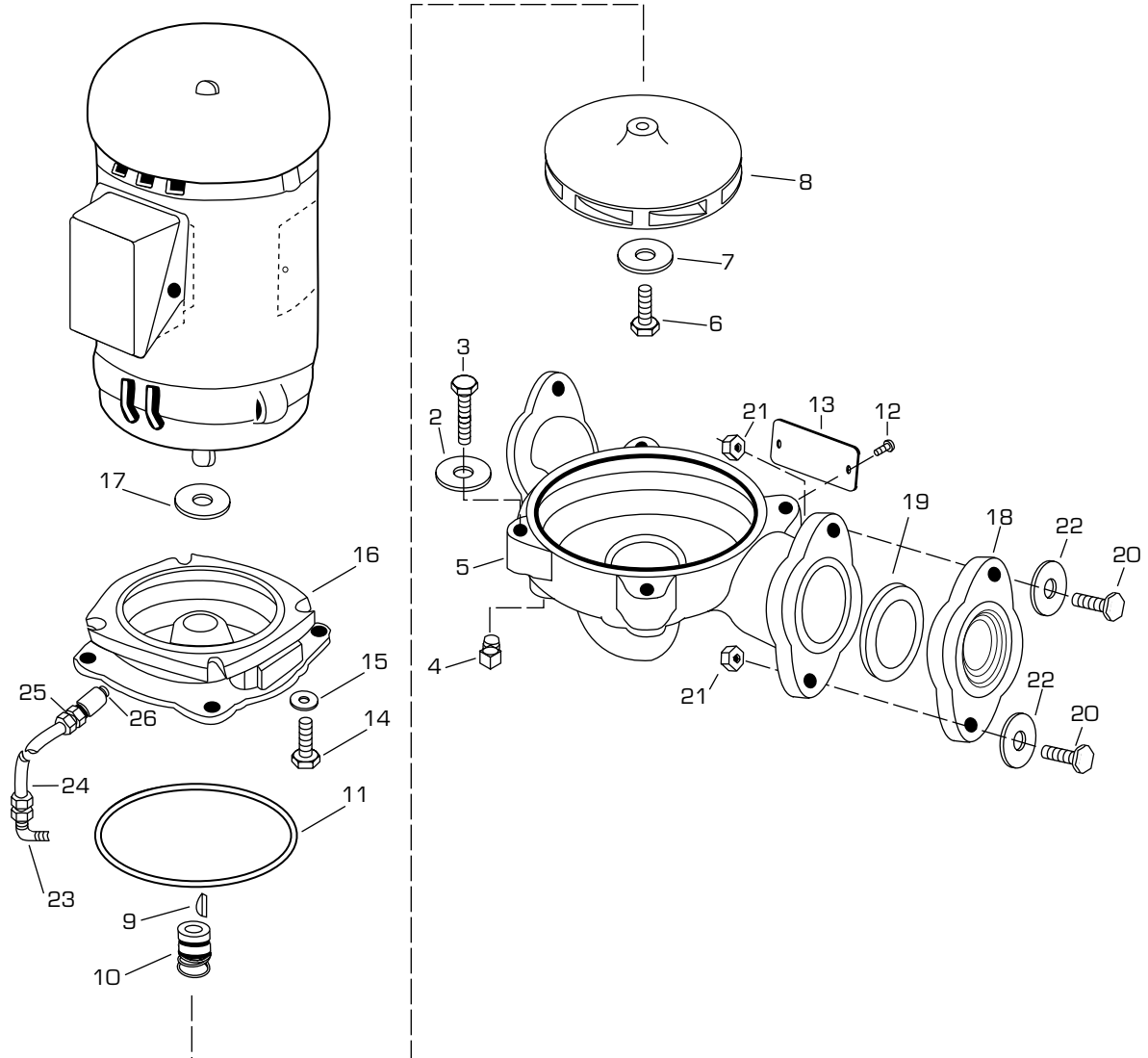


326A SERIES REPAIR PARTS INDEX



READ AND UNDERSTAND THE PUMP AND MOTOR
INSTRUCTIONS BEFORE ATTEMPTING TO INSTALL,
DISASSEMBLE OR REPAIR THE PUMP

326A SERIES
MODEL 326A
PIECE NUMBERS



MODEL 326A
PARTS LIST

PC. NO.	DESCRIPTION	QTY	PART NO.	MATERIAL			
				B.F.	A.B.	A.I.	
1	INSTRUCTION MANUAL	1	842-0586	999	999	999	
2	WASHER 6" PUMP	4	908-0112	080	190	080	
	WASHER 7" PUMP	4	908-0112	080	190	080	
3	CAPSCREW 6" PUMP	4	168-0380	082	190	082	
	CAPSCREW 7" PUMP	4	168-0488	082	190	082	
4	PLUG	4	600-0002	087	190	087	
5	CASING						
	MODEL "B", 1-1/4x1-1/4x6	1	180-2568	010	208	010	
	MODEL "C", 1-1/2x1-1/2x6	1	180-2569	010	208	010	
	MODEL "D", 2x2x6	1	180-2570	010	208	010	
	MODEL "E,G,H", 1-1/2x1-1/2x7	1	180-2571	010	208	010	
	MODEL "I,J,K", 2x2x7	1	180-2572	010	208	010	
6	CAPSCREW	1	168-0255	104	104	104	
7	WASHER	1	908-0599	104	104	104	
8	IMPELLER, STANDARD TRIM						
	MODEL "B", 1-1/4x1-1/4x6	1	443-2966	225	225	010	
	MODEL "C", 1-1/2x1-1/2x6	1	443-2967	225	225	010	
	MODEL "D", 2x2x6	1	443-2968	225	225	010	
	MODEL "F", 1-1/2x1-1/2x7	1	443-2969	225	225	010	
	MODEL "G", 1-1/2x1-1/2x7	1	443-2970	225	225	010	
	MODEL "H", 1-1/2x1-1/2x7	1	443-2971	225	225	010	
	MODEL "I", 2x2x7	1	443-2972	225	225	010	
	MODEL "J", 2x2x7	1	443-2973	225	225	010	
	MODEL "K", 2x2x7	1	443-2974	225	225	010	
	IMPELLER, SPECIAL TRIM						
		1-1/4x1-1/4x6	1	443-1789	225	225	010
		1-1/2x1-1/2x6	1	443-1792	225	225	010
		2x2x6	1	443-1795	225	225	010
	1-1/2x1-1/2x7	1	443-1792	225	225	010	
	2x2x7	1	443-1795	225	225	010	
9	KEY	1	472-0105	100	100	100	
10	SEAL	1	712-1004	749	764	749	
11	GASKET - 6" PUMPS	1	364-0446	457	457	457	
	GASKET - 7" PUMPS	1	364-0452	457	457	457	
12	DRIVE SCREW	2	708-0013	365	365	365	
13	NAMEPLATE	1	532-0045	114	114	114	
14	CAPSCREW	4	168-0380	082	190	082	
15	WASHER	4	908-0112	080	190	080	

PC. NO.	DESCRIPTION	QTY	PART NO.	MATERIAL		
				B.F.	A.B.	A.I.
16	BRACKET, 6" PUMP	1	116-0511	010	208	010
	BRACKET, 7" PUMP	1	116-0512	010	208	010
17	SLINGER	1	764-1002	478	478	478
18	FLANGE					
	1-1/4" FLANGE, 1-1/4" NPT	2	600-5305	010	208	010
	1-1/4" FLANGE, 1-1/2" NPT	2	600-5306	010	208	010
	1-1/2" FLANGE, 1-1/2" NPT	2	600-5307	010	208	010
	2" FLANGE, 2" NPT	2	600-5308	010	208	010
19	FLANGE SOCKET					
	1-1/4" FLANGE	2	364-0587	457	457	457
	1-1/2" FLANGE	2	364-0588	457	457	457
	2" FLANGE	2	364-0589	457	457	457
20	FLANGE BOLTS					
	1-1/4" & 1-1/2" FLANGES	4	168-0454	082	190	080
	2" FLANGES	8	168-0496	082	190	080
21	FLANGE NUTS					
	1-1/4" & 1-1/2" FLANGES	4	544-0111	080	190	080
	2" FLANGES	8	544-0113	080	190	080
22	FLANGE WASHERS					
	1-1/4" & 1-1/2" FLANGES	4	908-0069	080	190	080
	2" FLANGES	8	908-0114	080	190	080
23	TUBE CONNECTOR	1	868-3660	190	190	190
24	TUBING	-	872-0124	175	175	104
25	TUBE CONNECTOR	1	868-3581	190	190	190
26	NIPPLE, 6" PUMP		600-1156	387	104	387
	NIPPLE, 7" PUMP		600-1158	387	104	387
27	FLANGE GASKET KIT					
	CONTAINS SUFFICIENT					
	ITEMS 18, 19, 20, 21, 22 FOR					
	ONE PUMP					
	1-1/4" FLANGE, 1-1/4" NPT	1	476-0783	644	643	644
	1-1/4" FLANGE, 1-1/2" NPT	1	476-0784	644	643	644
1-1/2" FLANGE, 1-1/2" NPT	1	476-0785	644	643	644	
	2" FLANGE, 2" NPT	1	476-0786	644	643	644



NOTE:

Aurora Pump reserves the right to make revisions to its products and their specifications, and to this bulletin and related information without notice.

Aurora Pumps

800 Airport Road
North Aurora, IL 60542
phone: 630-859-7000
fax: 630-859-7060