

Performance Curves for the 320 Series

MODEL/SIZE	R.P.M.	CATALOG PAGE	PDF PAGE
3/4 x 1 x 6A	3500/1750	401	2
3/4 x 1 x 7A	3500	402	3
3/4 x 1 x 7B	1750	403	4
1 x 1-1/4 x 4	3500/1750	404	5
1 x 1-1/4 x 5	3500/1750	405	6
1 x 1-1/4 x 6	3500/1750	406	7
1-1/4 x 1-1/2 x 5	3500/1750	407	8
1-1/4 x 1-1/2 x 7A	3500	408	9
1-1/4 x 1-1/2 x 7B	1750	409	10
1-1/4 x 1-1/2 x 9	1750	410	11
1-1/2 x 2 x 4	3500/1750	411	12
1-1/2 x 2 x 7	1750	412	13
2 x 2-1/4 x 4	3500/1750	413	14
2 x 2-1/2 x 5	3500/1750	414	15
2 x 2-1/2 x 6	3500/1750	415	16
2 x 2-1/2 x 7	1750	416	17
3 x 3 x 6	3500/1750	417	18

3/4 x 1 x 6A SERIES 320

ENCLOSED IMPELLER

Section **320** Page **401**

Date **January 2001**

Supersedes Section 320 Page 401

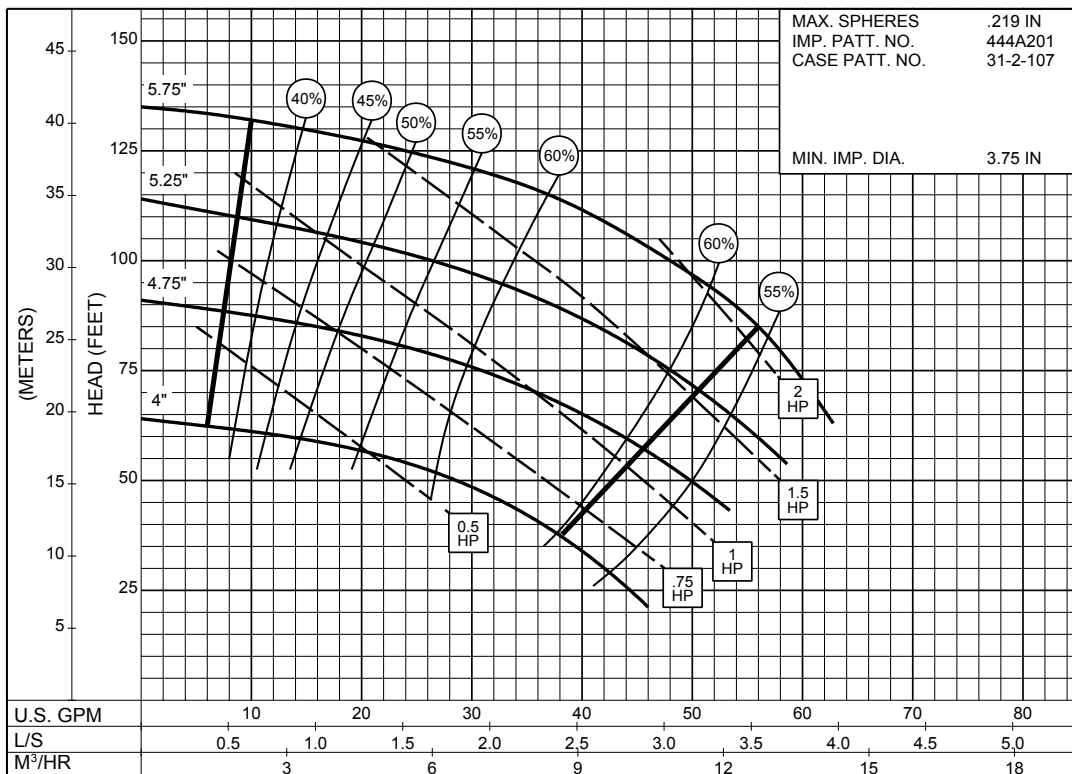
Dated February 1983

SIZE : 3/4x1x6A

TYPE : 320

IMPELLER : Enclosed

R. P. M. : 3500



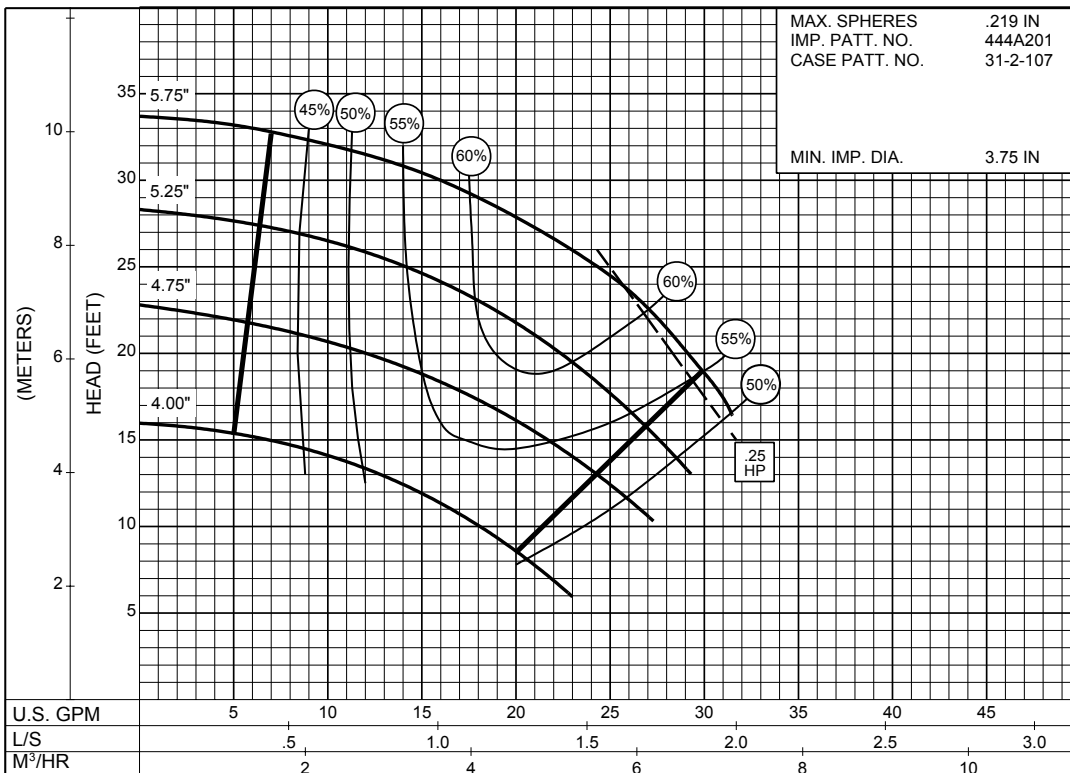
3500
R.P.M

SIZE : 3/4x1x6A

TYPE : 320

IMPELLER : Enclosed

R. P. M. : 1750



1750
R.P.M

3/4 x 1 x 7A SERIES 320

ENCLOSED IMPELLER

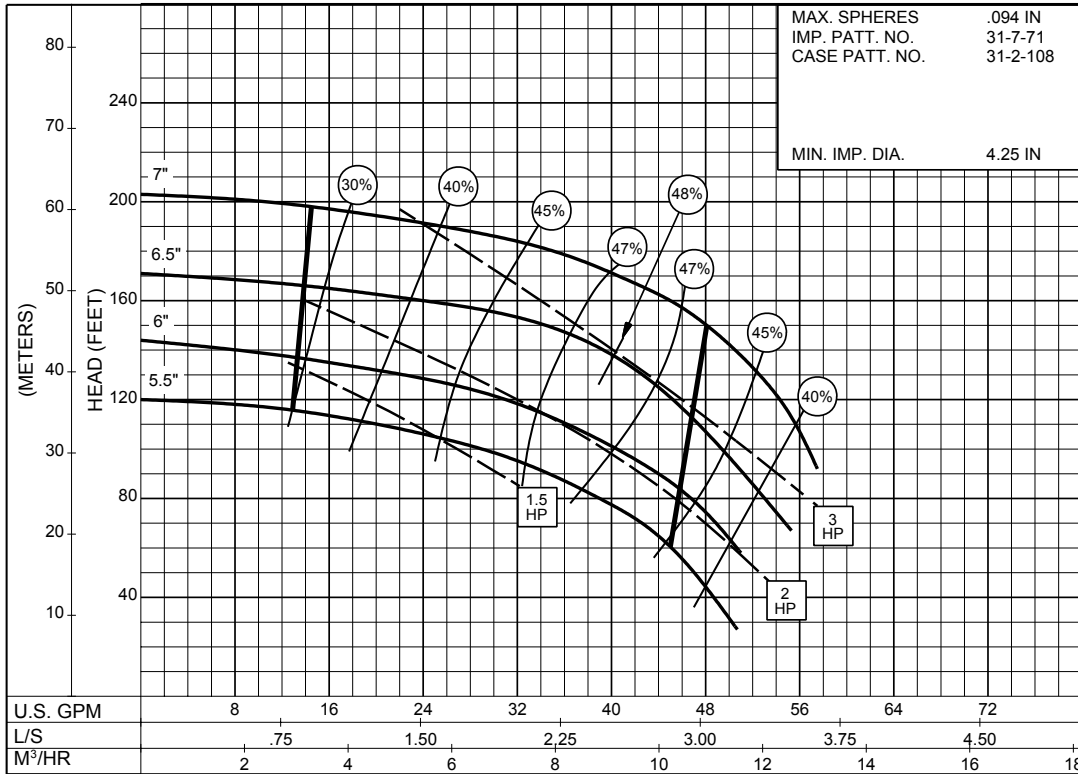
SIZE : 3/4x1x7A

TYPE : 320

IMPELLER : Enclosed

R. P. M. : 3500

MAX. SPHERES	.094 IN
IMP. PATT. NO.	31-7-71
CASE PATT. NO.	31-2-108
MIN. IMP. DIA.	4.25 IN



3500
R.P.M

31 PC-10929

3/4 x 1 x 7B SERIES 320

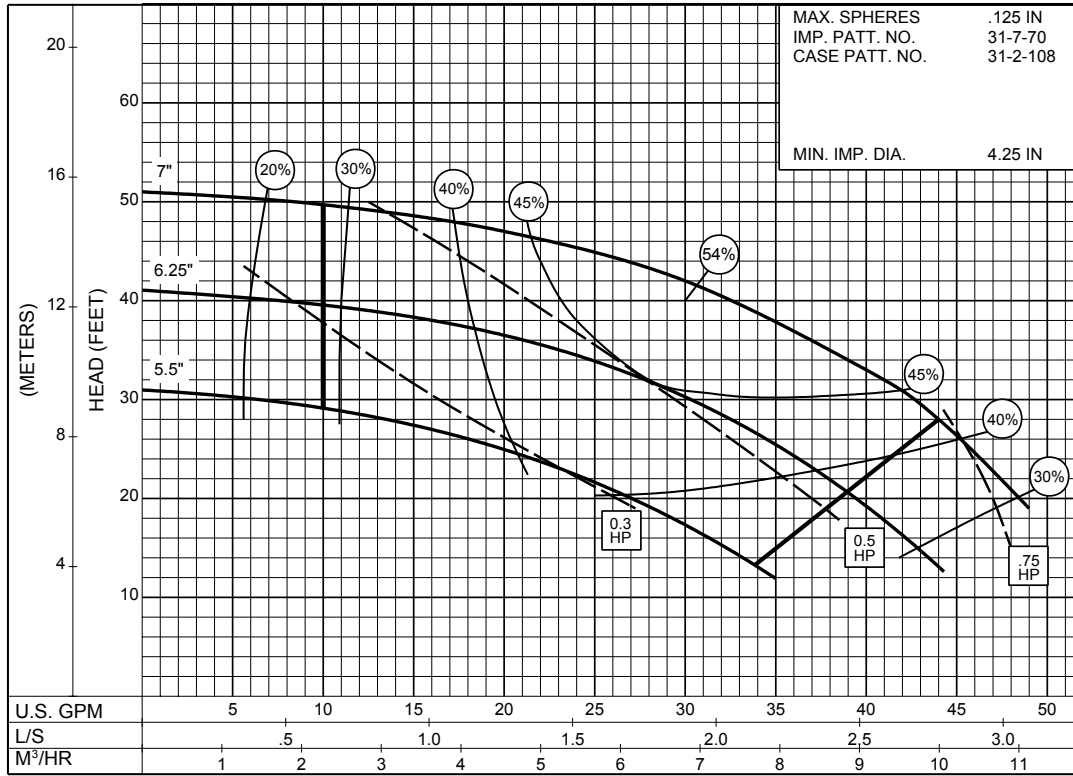
ENCLOSED IMPELLER

SIZE : 3/4x1x7B

TYPE : 320

IMPELLER : Enclosed

R. P. M. : 1750



31PC-10930

1750
R.P.M

1 x 1-1/4 x 4 SERIES 320

ENCLOSED IMPELLER

SIZE : 1x1-1/4x4

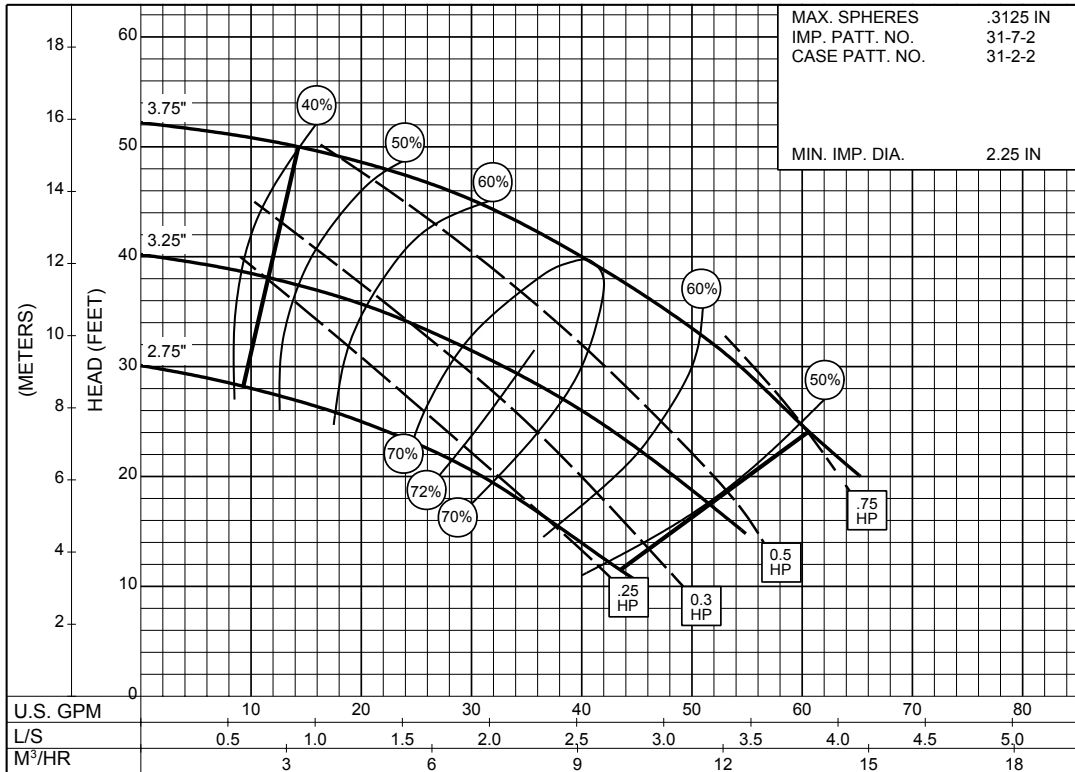
TYPE : 320

IMPELLER : Enclosed

R. P. M. : 3500

MAX. SPHERES .3125 IN
 IMP. PATT. NO. 31-7-2
 CASE PATT. NO. 31-2-2

MIN. IMP. DIA. 2.25 IN



3500
R.P.M

31PC-10909

SIZE : 1x1-1/4x4

TYPE : 320

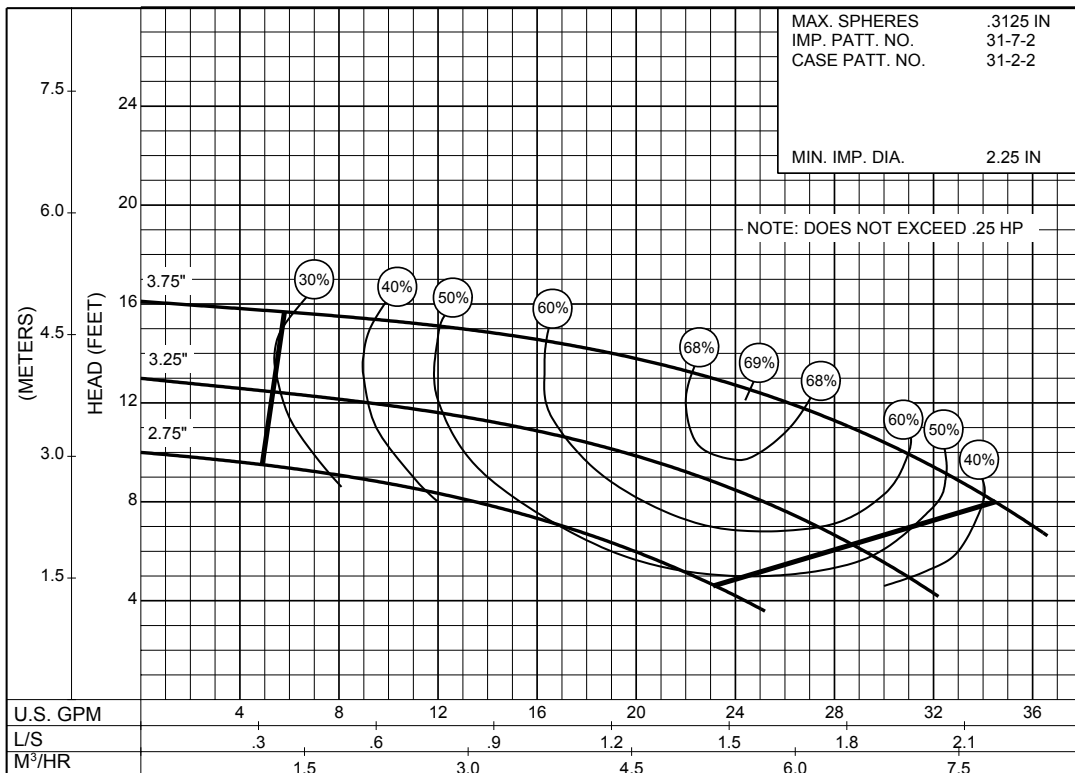
IMPELLER : Enclosed

R. P. M. : 1750

MAX. SPHERES .3125 IN
 IMP. PATT. NO. 31-7-2
 CASE PATT. NO. 31-2-2

MIN. IMP. DIA. 2.25 IN

NOTE: DOES NOT EXCEED .25 HP



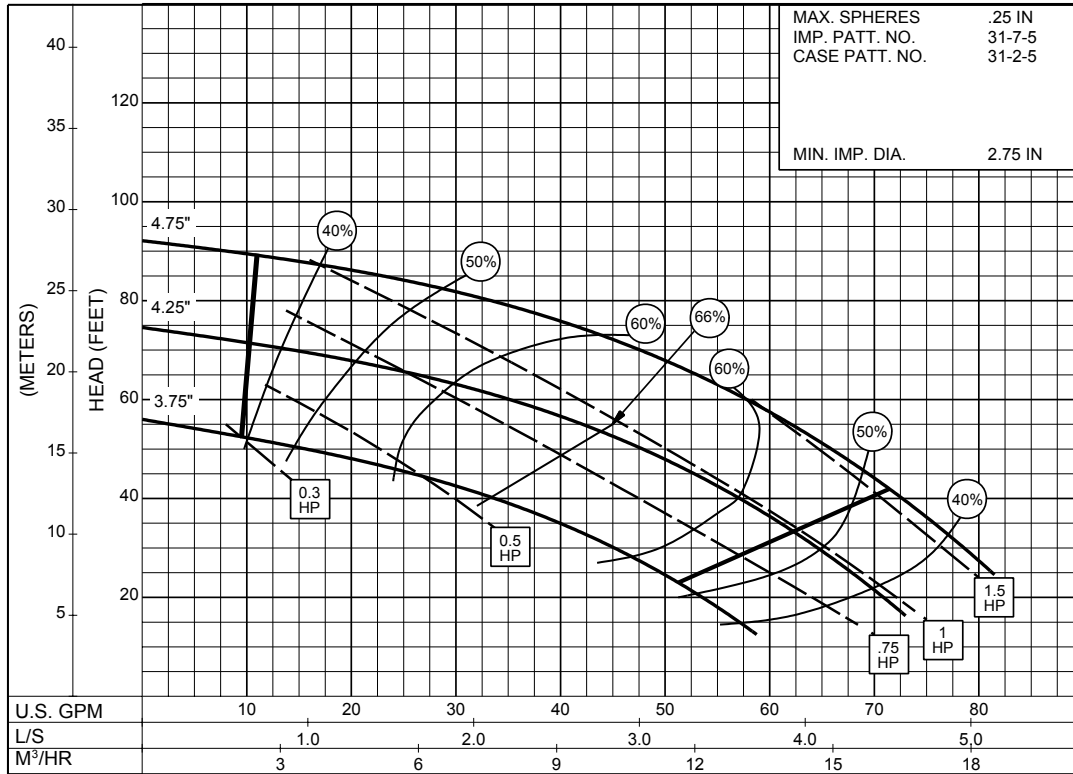
1750
R.P.M

31PC-10910

1 x 1-1/4 x 5 SERIES 320

ENCLOSED IMPELLER

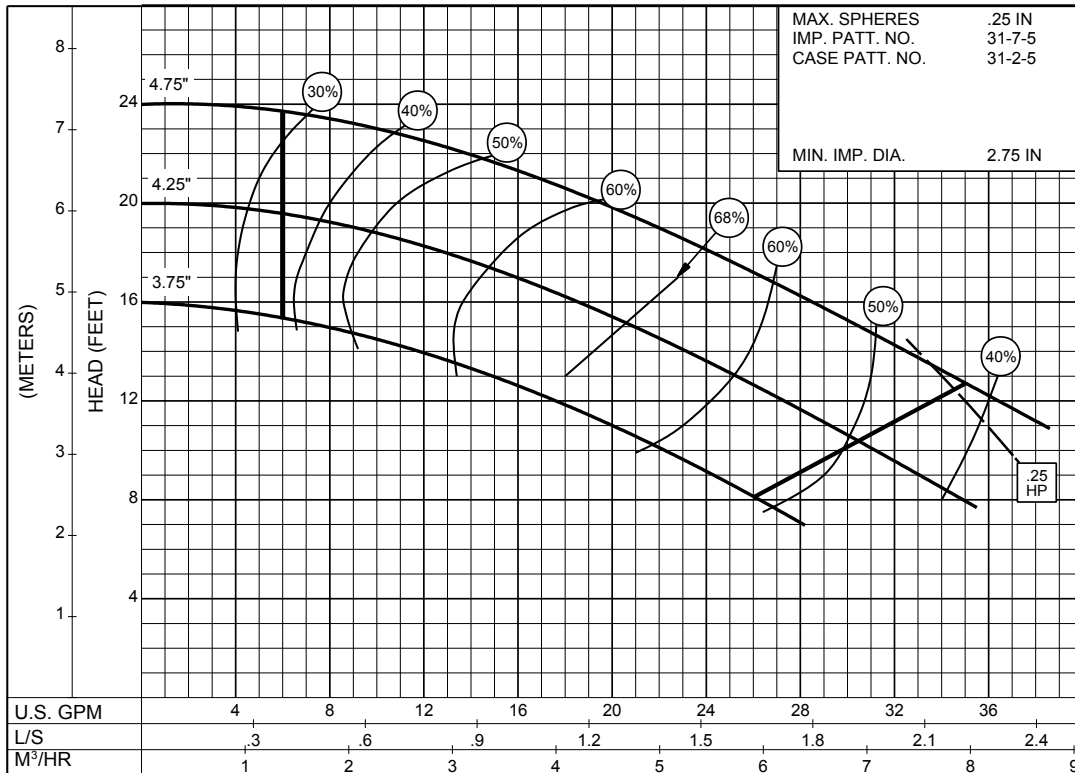
SIZE : 1x1-1/4x5 TYPE : 320 IMPELLER : Enclosed R. P. M. : 3500



31PC-10915

3500
R.P.M

SIZE : 1x1-1/4x5 TYPE : 320 IMPELLER : Enclosed R. P. M. : 1750



31PC-10916

1750
R.P.M

1 x 1-1/4 x 6 SERIES 320

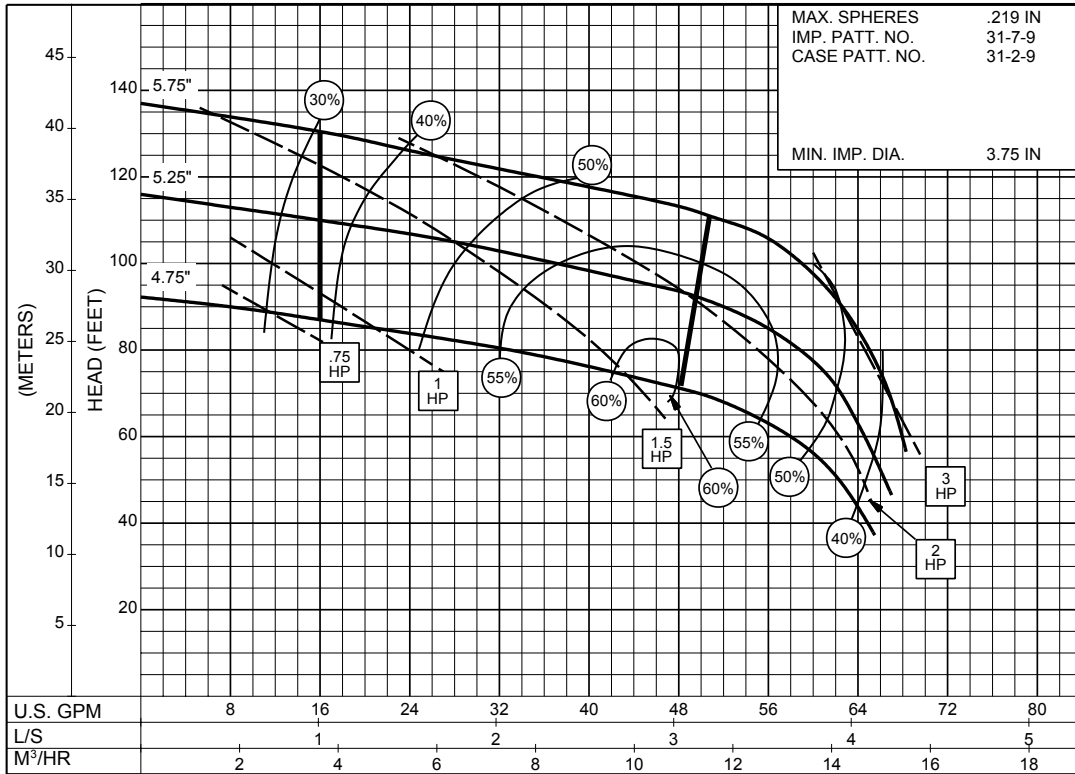
ENCLOSED IMPELLER

SIZE : 1x1-1/4x6

TYPE : 320

IMPELLER : Enclosed

R. P. M. : 3500



31PC-10923

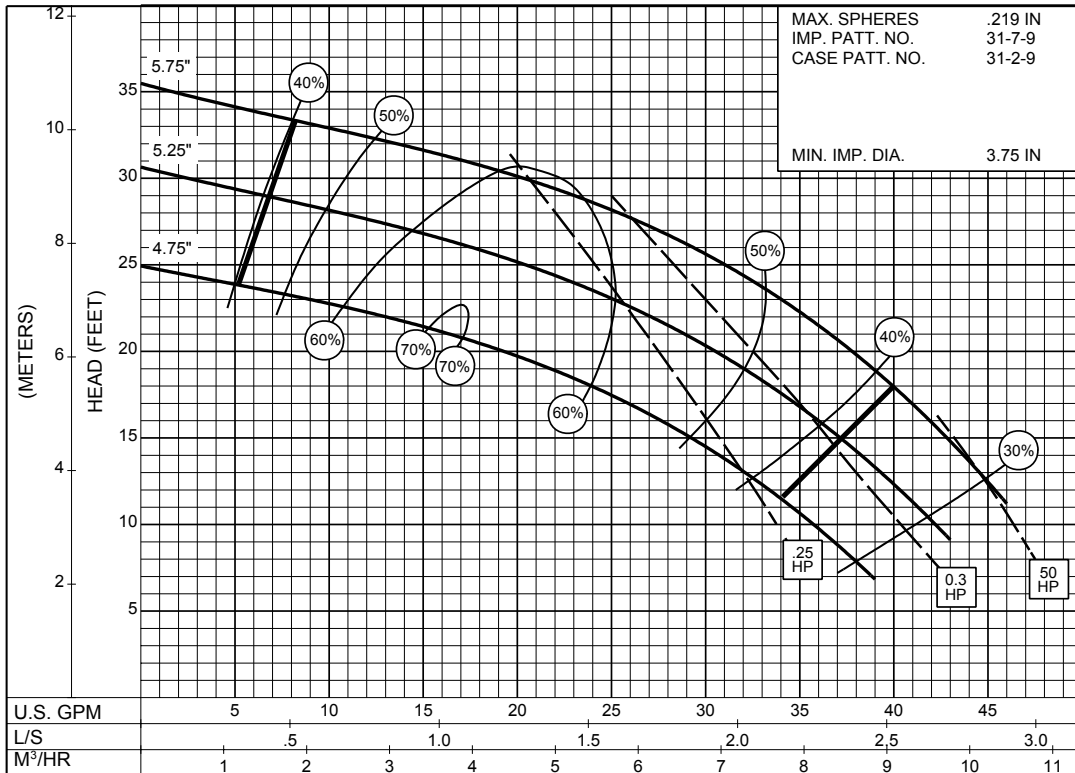
3500
R.P.M

SIZE : 1x1-1/4x6

TYPE : 320

IMPELLER : Enclosed

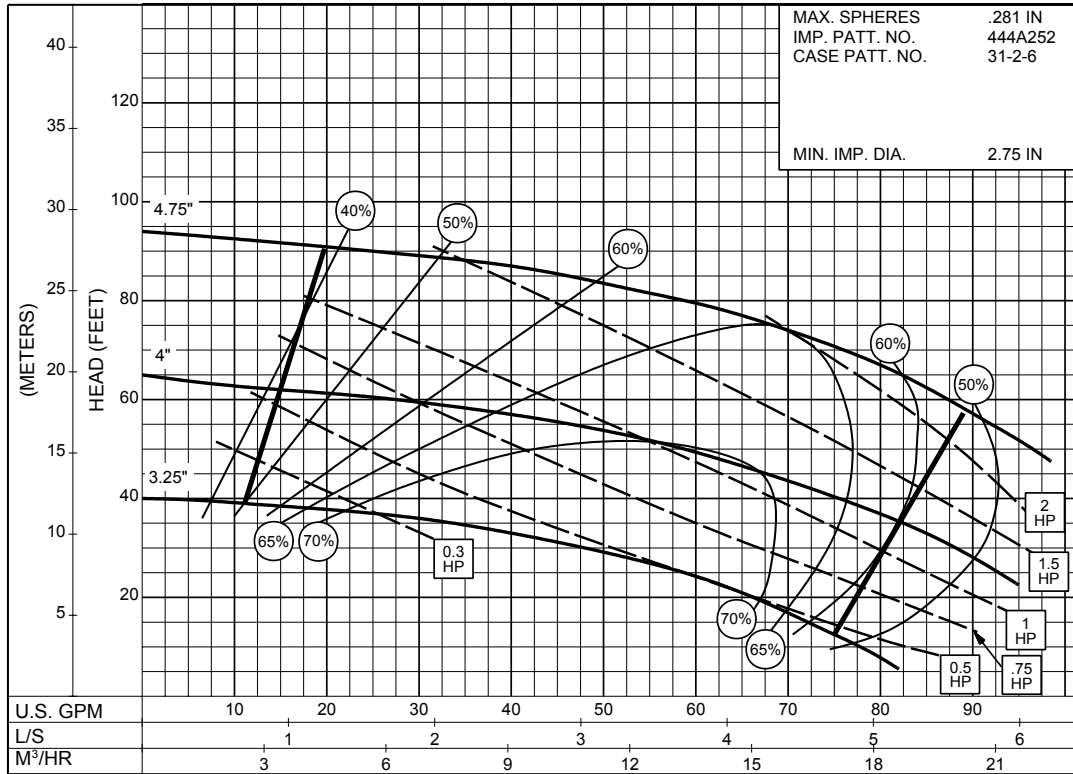
R. P. M. : 1750



31PC-10924

1750
R.P.M

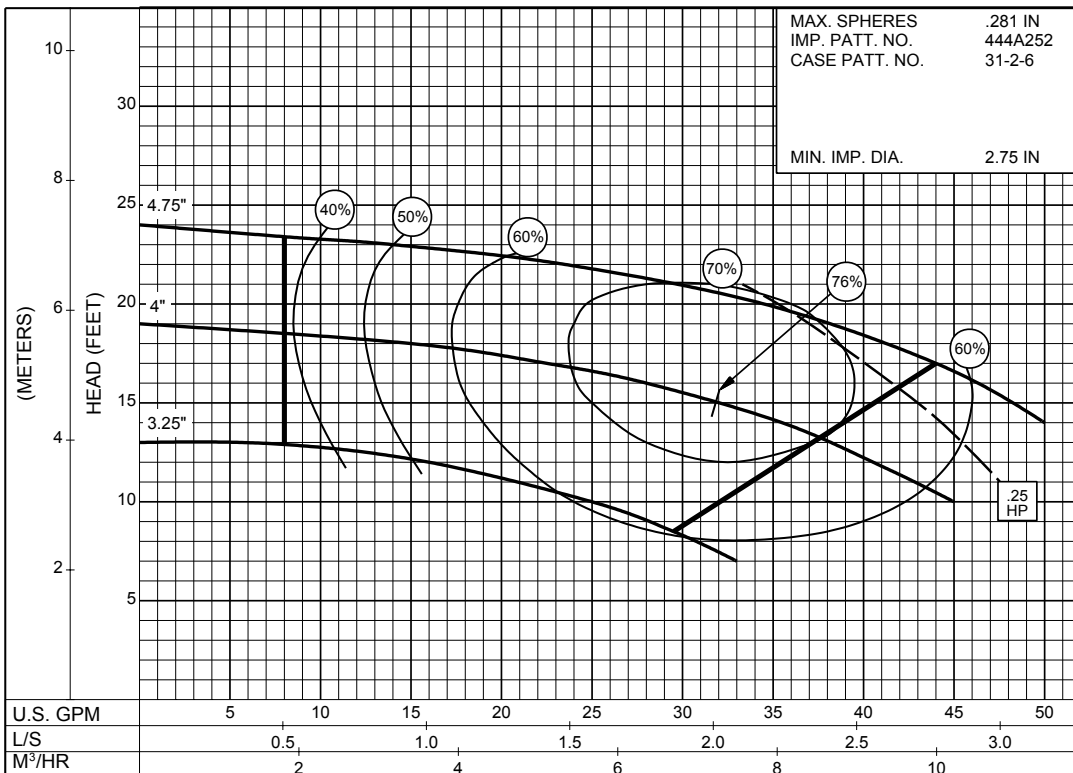
SIZE : 1-1/4x1-1/2x5 TYPE : 320 IMPELLER : Enclosed R. P. M. : 3500



**3500
R.P.M**

31PC-10917

SIZE : 1-1/4x1-1/2x5 TYPE : 320 IMPELLER : Enclosed R. P. M. : 1750



**1750
R.P.M**

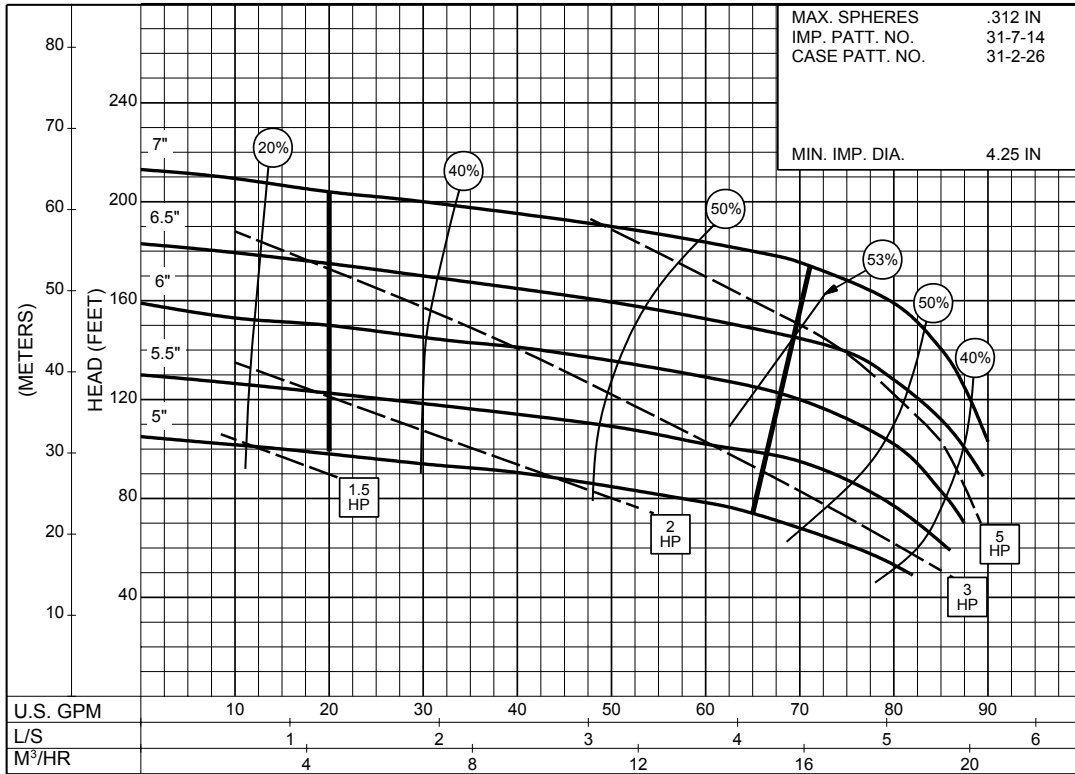
31PC-10918

ENCLOSED IMPELLER

Supersedes Section 320 Page 408
 Dated March 1966

SIZE : 1-1/4x1-1/2x7A TYPE : 320 IMPELLER : Enclosed R. P. M. : 3500

MAX. SPHERES	.312 IN
IMP. PATT. NO.	31-7-14
CASE PATT. NO.	31-2-26
MIN. IMP. DIA.	4.25 IN



31PC-10931

**3500
R.P.M**

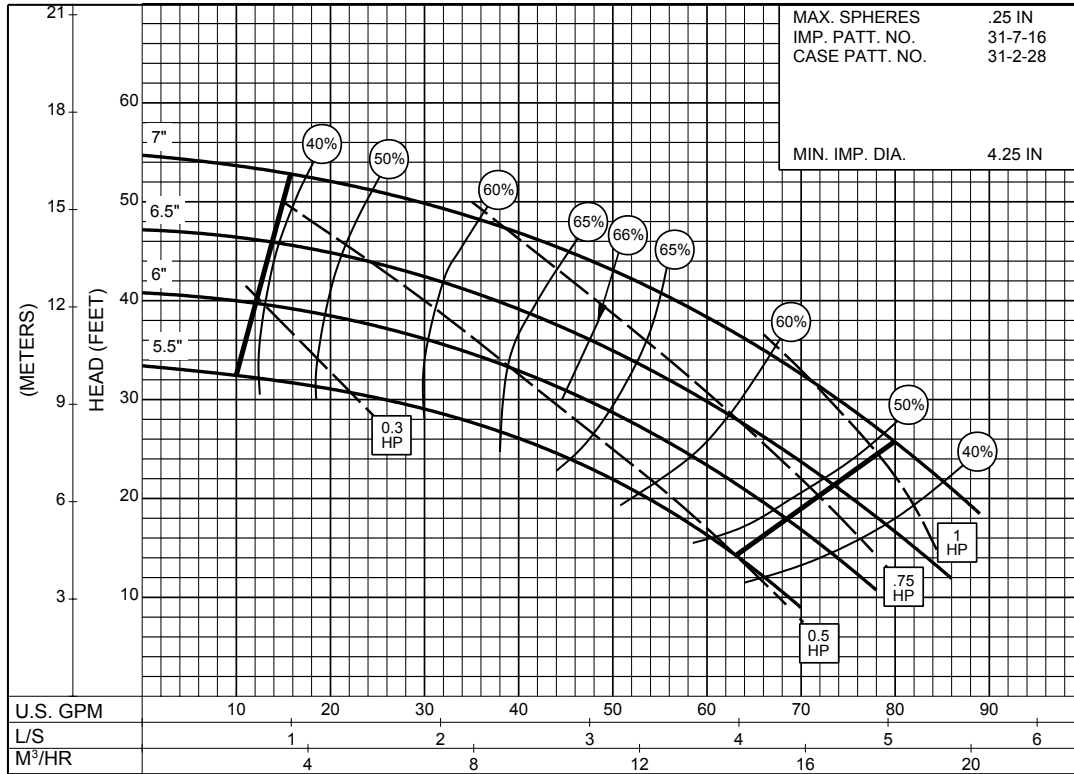
ENCLOSED IMPELLER

Date **January 2001**

Supersedes Section 320 Page 409

Dated March 1966

SIZE : 1-1/4x1-1/2x7B TYPE : 320 IMPELLER : Enclosed R. P. M. : 1750



31PC-10932

**1750
R.P.M**

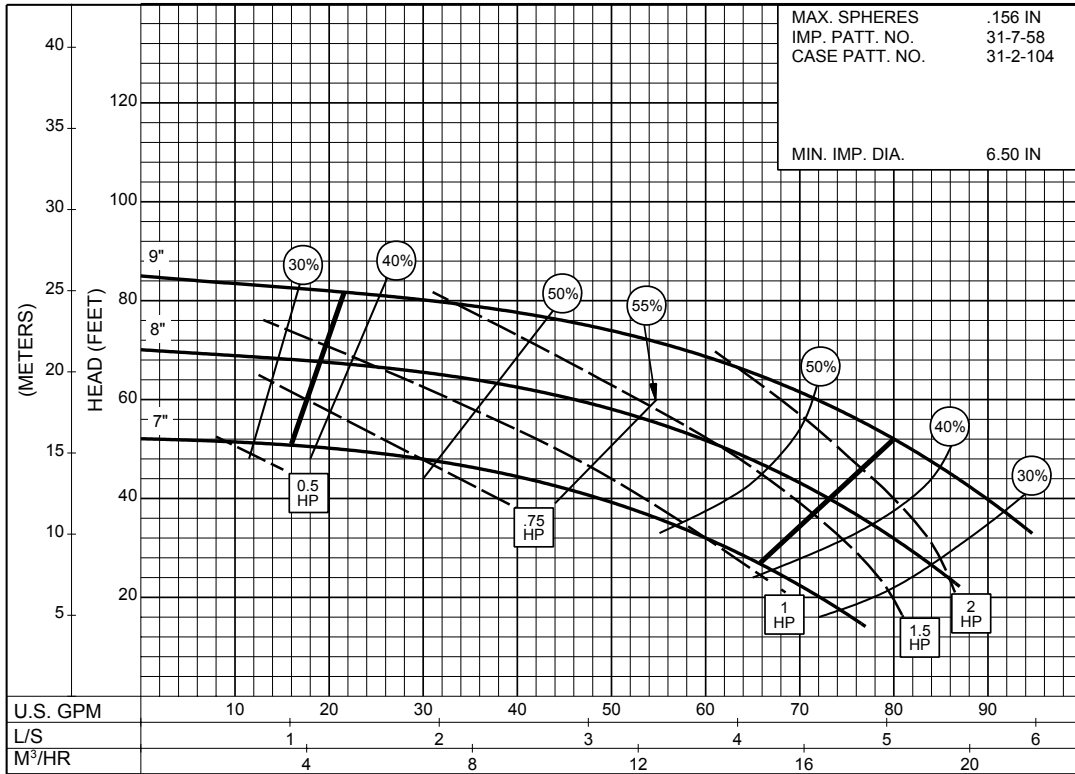
SIZE : 1-1/4x1-1/2x9

TYPE : 320

IMPELLER : Enclosed

R. P. M. : 1750

MAX. SPHERES	.156 IN
IMP. PATT. NO.	31-7-58
CASE PATT. NO.	31-2-104
MIN. IMP. DIA.	6.50 IN

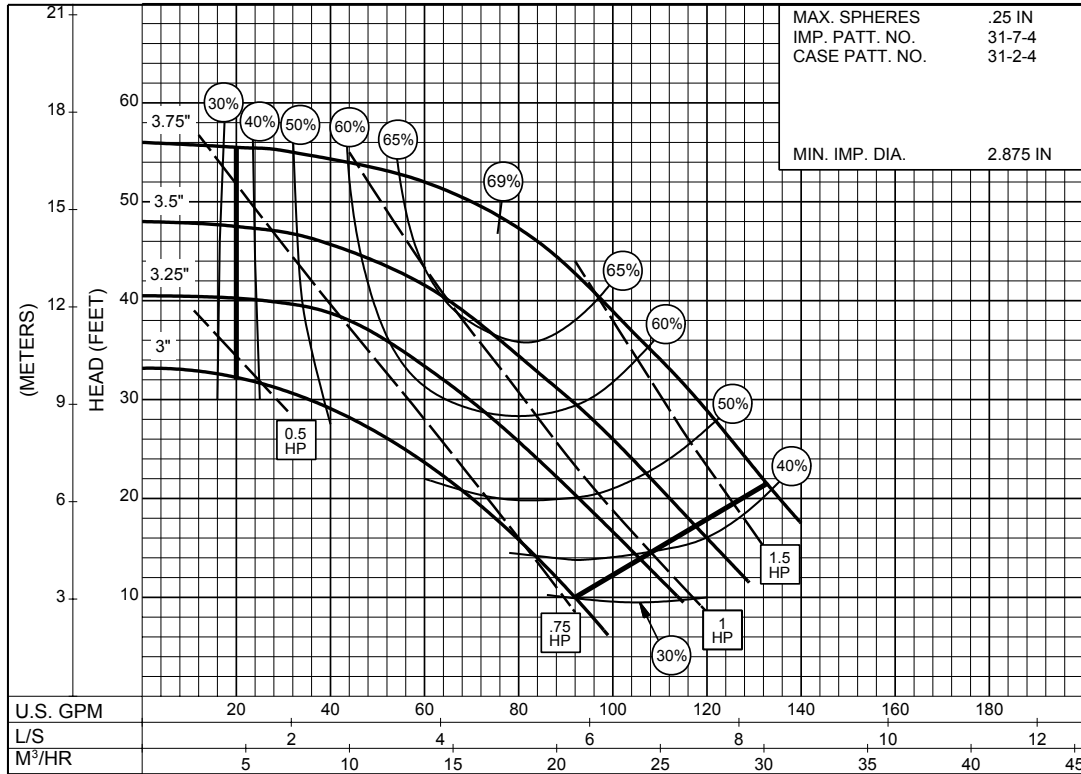


31PC-10935

1-1/2 x 2 x 4 SERIES 320

ENCLOSED IMPELLER

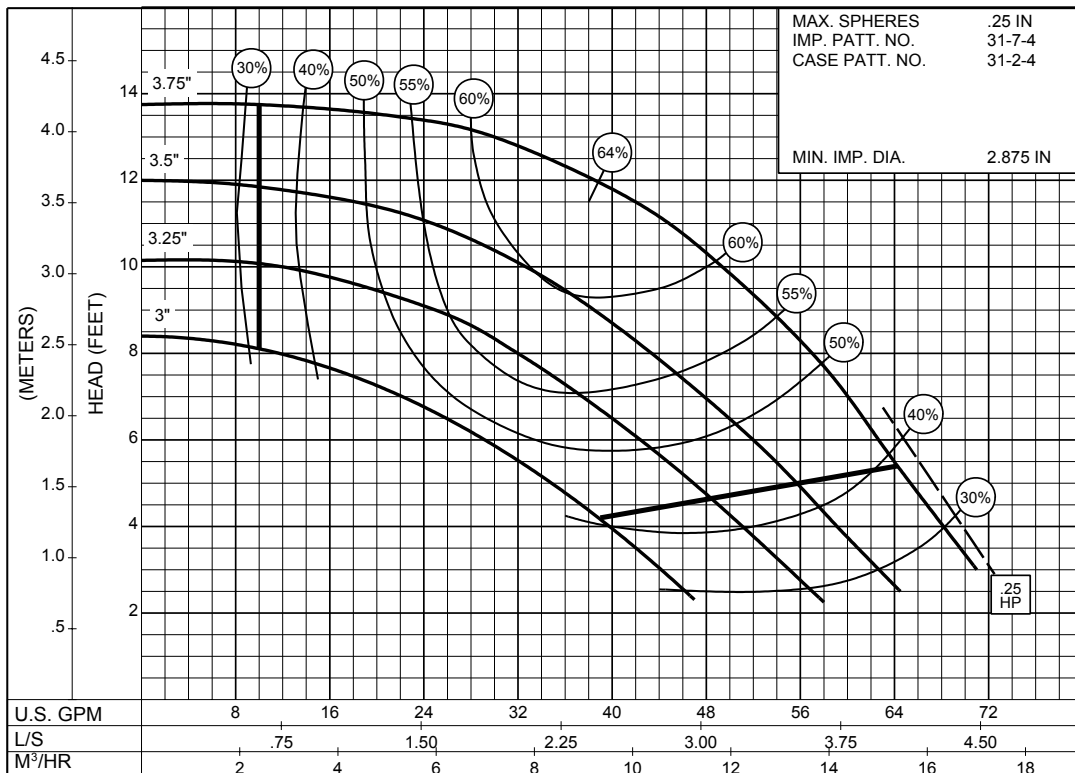
SIZE : 1-1/2x2x4 TYPE : 320 IMPELLER : Enclosed R. P. M. : 3500



31PC-113602

3500
R.P.M

SIZE : 1-1/2x2x4 TYPE : 320 IMPELLER : Enclosed R. P. M. : 1750



31PC-113603

1750
R.P.M

1-1/2 x 2 x 7 SERIES 320

ENCLOSED IMPELLER

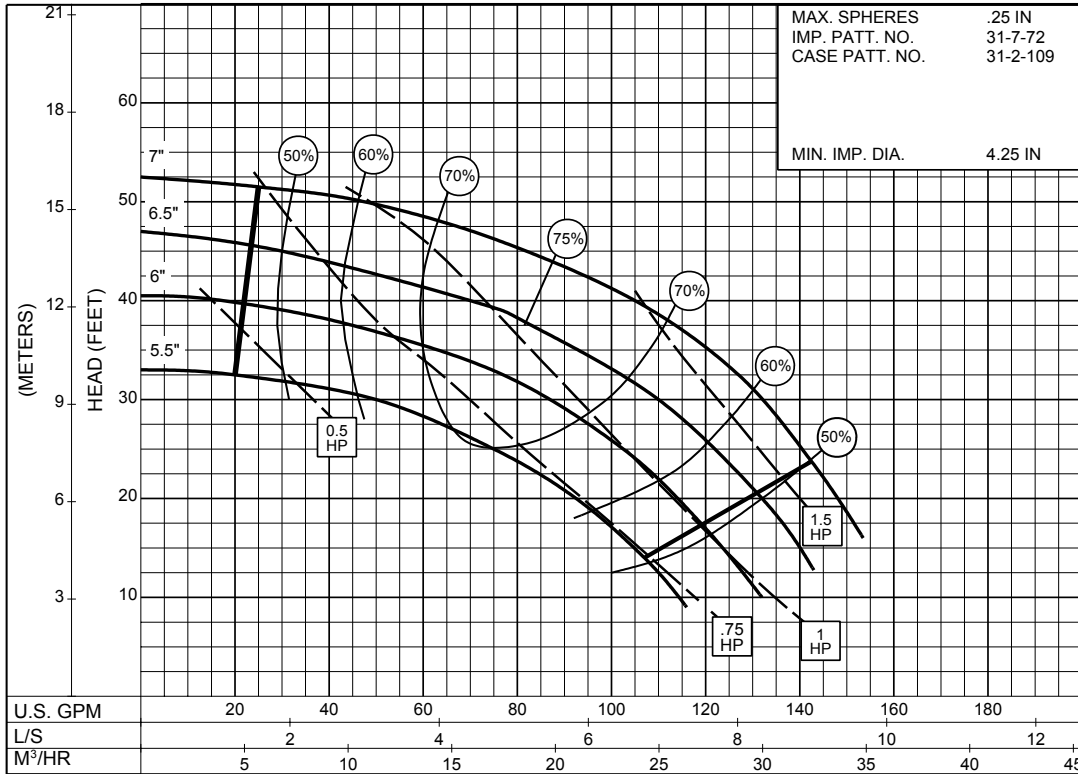
SIZE : 1-1/2x2x7

TYPE : 320

IMPELLER : Enclosed

R. P. M. : 1750

MAX. SPHERES	.25 IN
IMP. PATT. NO.	31-7-72
CASE PATT. NO.	31-2-109
MIN. IMP. DIA.	4.25 IN

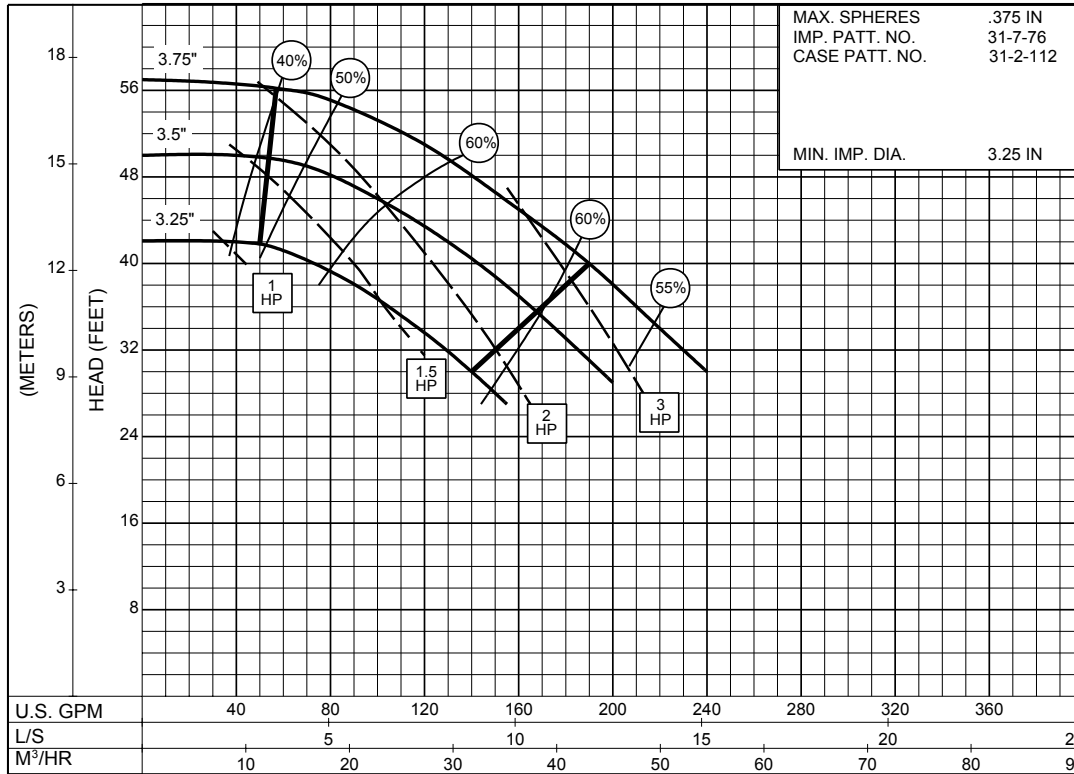


31PC-10933

2 x 2-1/2 x 4 SERIES 320

ENCLOSED IMPELLER

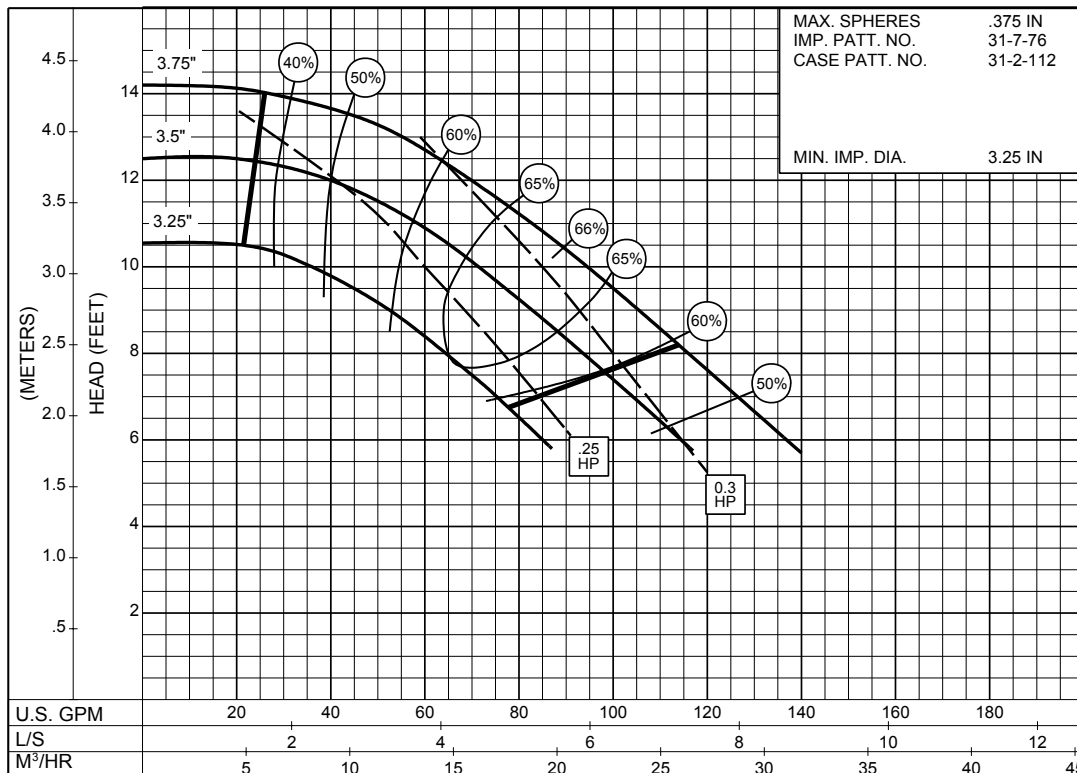
SIZE : 2x2-1/2x4 TYPE : 320 IMPELLER : Enclosed R. P. M. : 3500



31PC-113604

3500
R.P.M

SIZE : 2x2-1/2x4 TYPE : 320 IMPELLER : Enclosed R. P. M. : 1750



31PC-113605

1750
R.P.M

2 x 2-1/2 x 5 SERIES 320

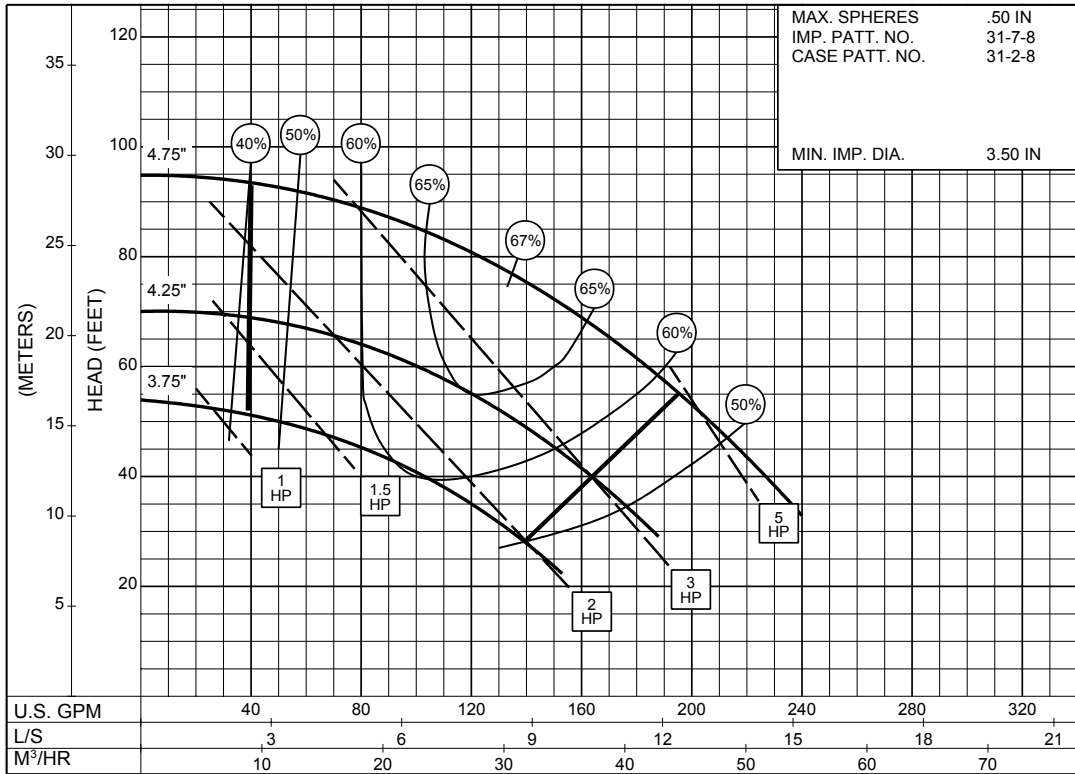
ENCLOSED IMPELLER

SIZE : 2x2-1/2x5

TYPE : 320

IMPELLER : Enclosed

R. P. M. : 3500



3500
R.P.M

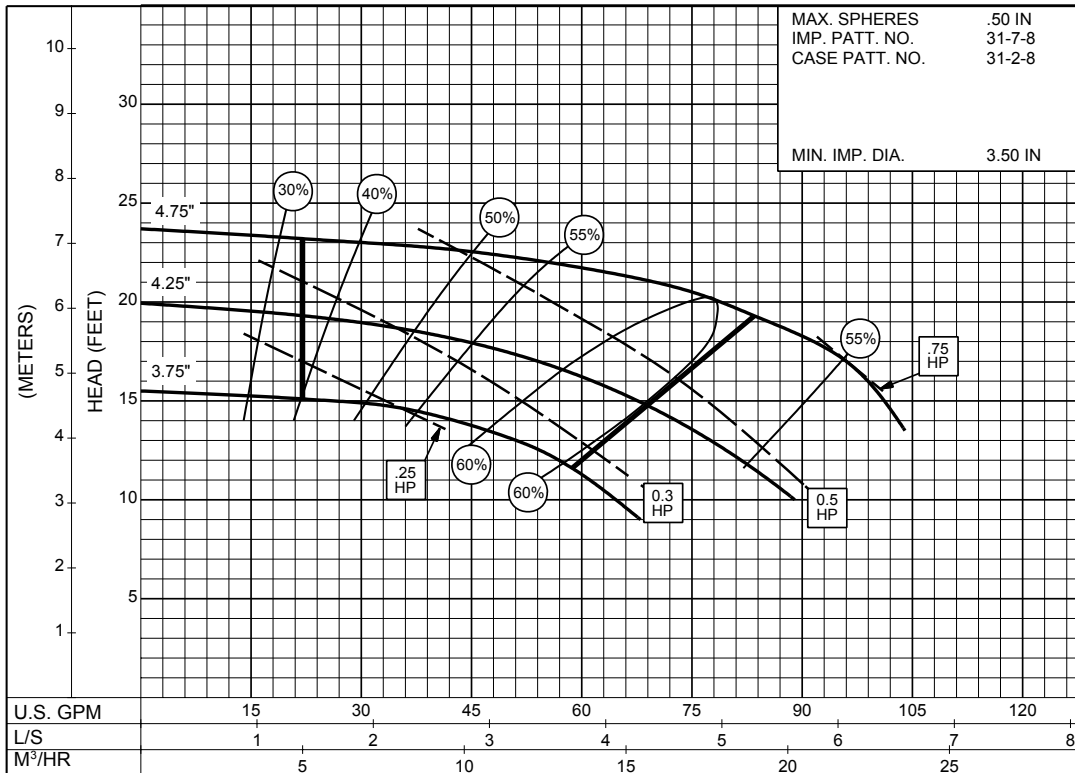
31PC-113606

SIZE : 2x2-1/2x5

TYPE : 320

IMPELLER : Enclosed

R. P. M. : 1750



1750
R.P.M

31PC-113607

2 x 2-1/2 x 6 SERIES 320

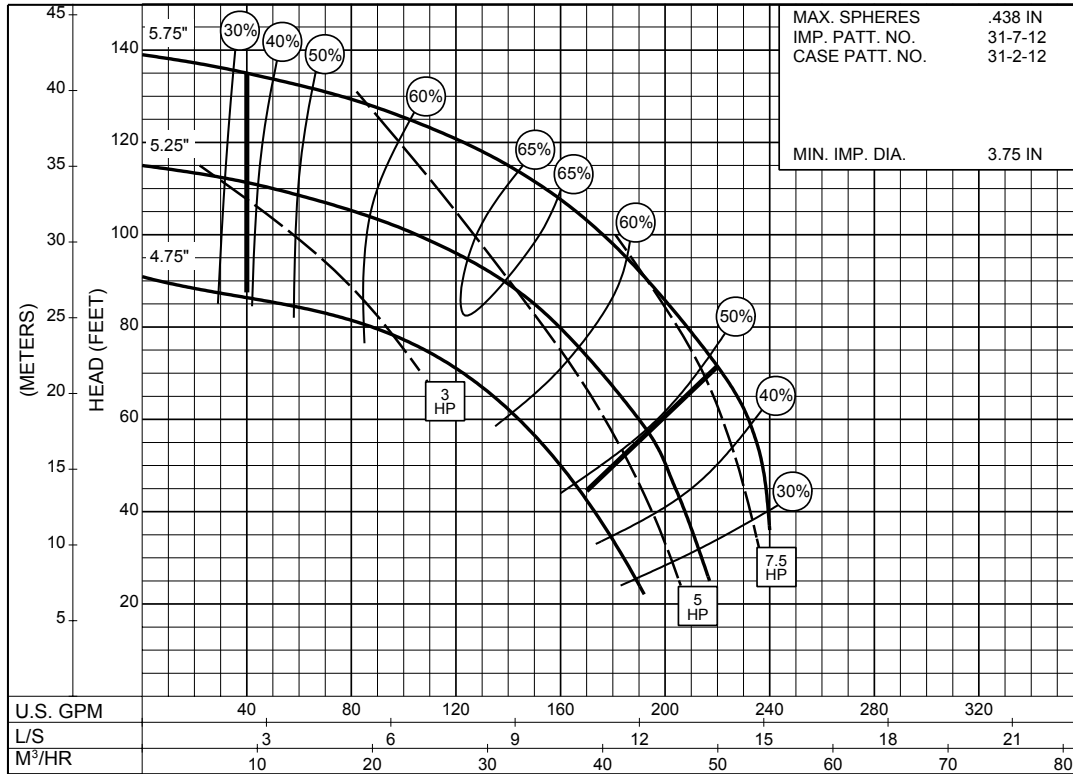
ENCLOSED IMPELLER

SIZE : 2x2-1/2x6

TYPE : 320

IMPELLER : Enclosed

R. P. M. : 3500



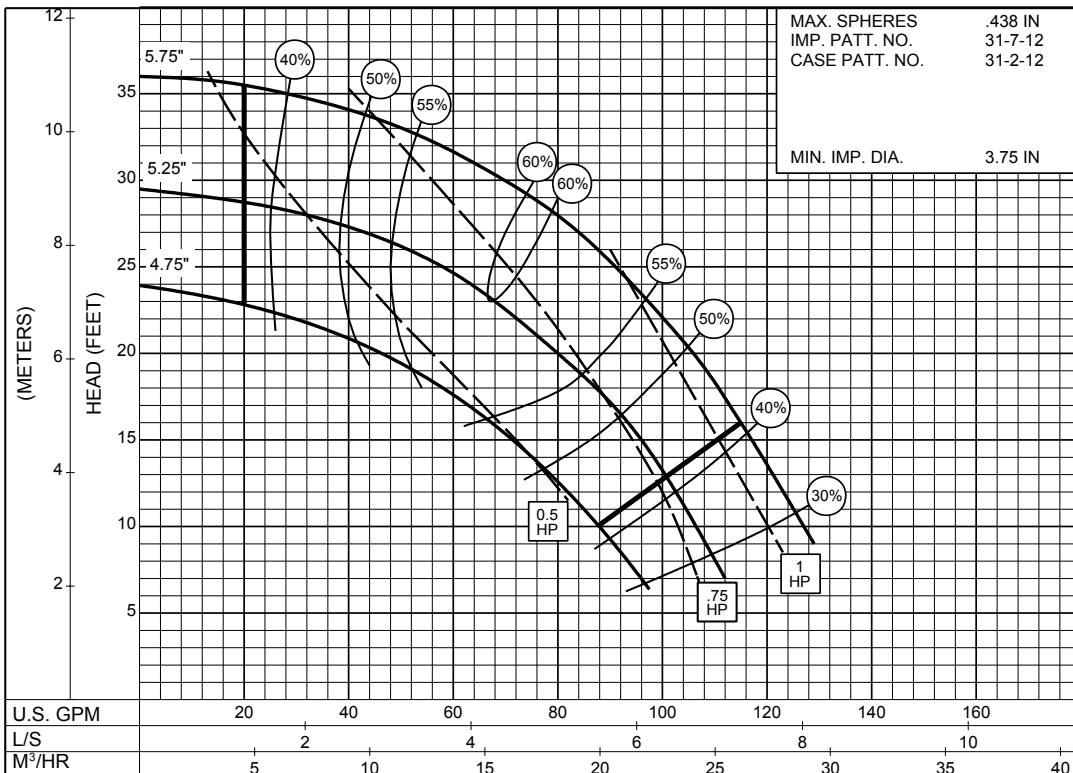
3500
R.P.M

SIZE : 2x2-1/2x6

TYPE : 320

IMPELLER : Enclosed

R. P. M. : 1750



1750
R.P.M

2 x 2-1/2 x 7 SERIES 320

ENCLOSED IMPELLER

SIZE : 2x2-1/2x7

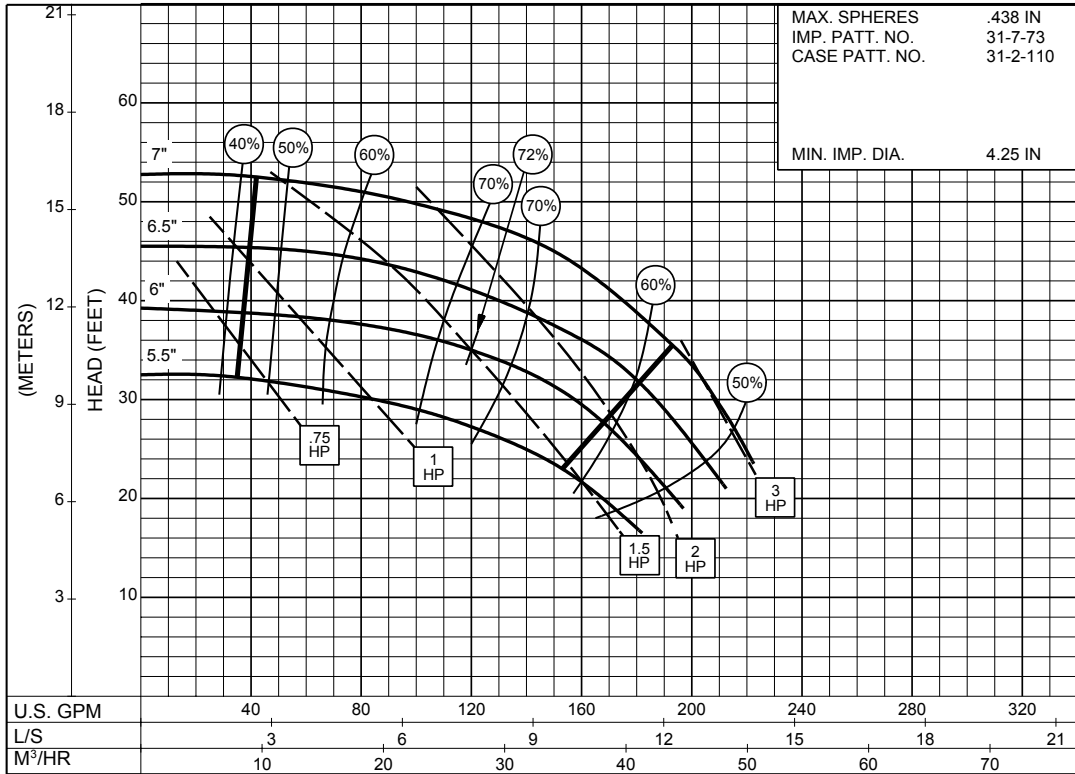
TYPE : 320

IMPELLER : Enclosed

R. P. M. : 1750

MAX. SPHERES	.438 IN
IMP. PATT. NO.	31-7-73
CASE PATT. NO.	31-2-110
MIN. IMP. DIA.	4.25 IN

1750
R.P.M

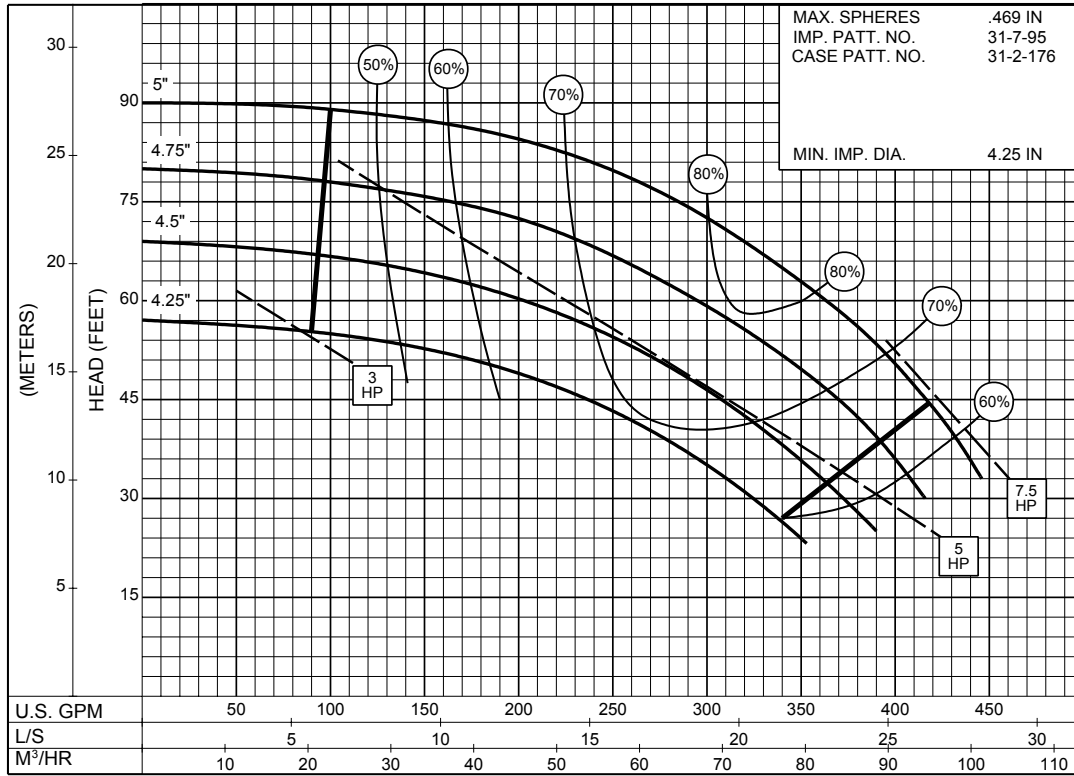


31PC-10934

3 x 3 x 6 SERIES 320

ENCLOSED IMPELLER

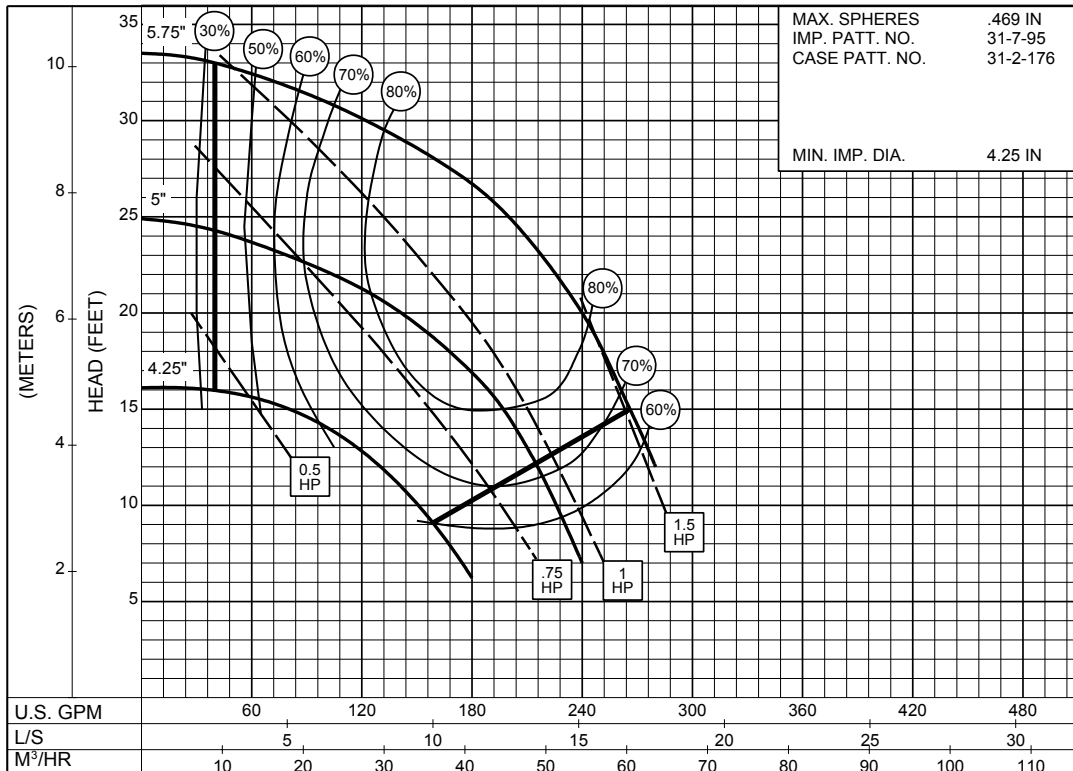
SIZE : 3x3x6 TYPE : 320 IMPELLER : Enclosed R. P. M. : 3500



31PC-122447

3500
R.P.M

SIZE : 3x3x6 TYPE : 320 IMPELLER : Enclosed R. P. M. : 1750



31PC-122448

1750
R.P.M

Section **320** Page **418**

Date **January 2001**

Supersedes Section 320 Page 418
Dated May 1991

THIS PAGE LEFT INTENTIONALLY BLANK