

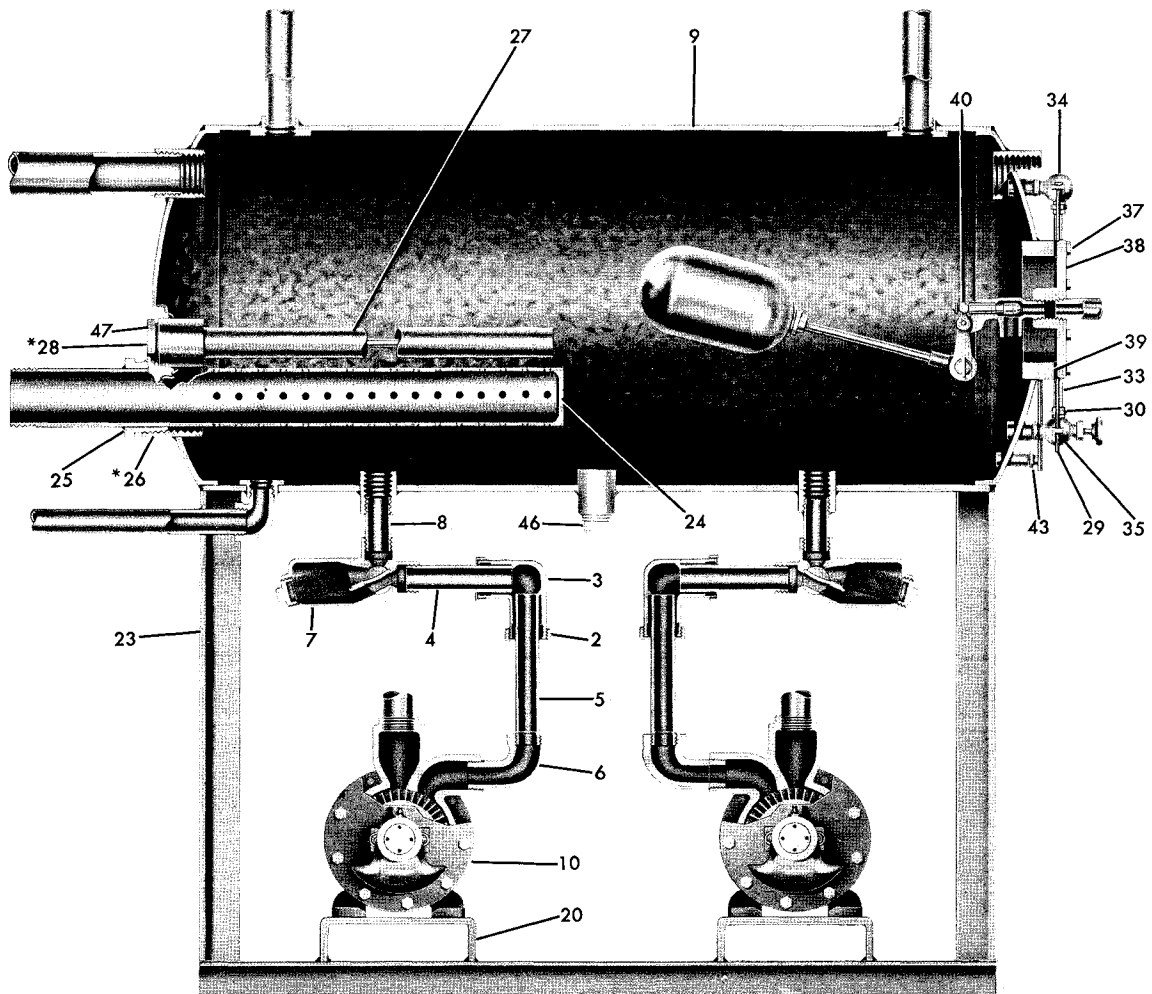
# 280 SERIES

## REPAIR PARTS INDEX

TANK SIZE	PAGE
30 GAL THRU 1000 GAL	3

# 280 SERIES

## MODEL 281-282-283-284 PIECE NUMBERS



NOTE:  
OPTIONAL GALVANIZED TANK  
ILLUSTRATED.

# 280 SERIES

BOILER FEED UNITS  
TANK SIZES  
30 GAL. THRU 1000 GAL.

## PARTS LIST

PC NO.	DESCRIPTION	QTY	PART NO.	MATERIAL				PC NO.	DESCRIPTION	QTY	PART NO.	MATERIAL			
				B.F.	A.B.	A.I.	S.S.					B.F.	A.B.	A.I.	S.S.
2	BUSHING		INCLUDED WITH NO. 3					750 GAL. STD. TANK	1	820-1327	087				
3	DRESSER ELBOW							750 GAL. GALV. TANK	1	820-1696	087				
	1½"	1	600-3057	387				1000 GAL. STD. TANK	1	820-1328	087				
	2"	1	600-3059	387				1000 GAL. GALV. TANK	1	820-1697	087				
	3"	1	600-4141	638											
4	PIPE		REFER TO FACTORY					24 PREHEATER							
5	PIPE		REFER TO FACTORY					30-100 GAL.	1	864-1001	079				
6	ELBOW		REFER TO FACTORY					200-350 GAL.	1	864-1003	079				
7	3-WAY VALVE		REFER TO SEC. 1070					500-1000 GAL.	1	864-1002	079				
8	NIPPLE		REFER TO FACTORY					25 BUSHING							
9	TANK (STANDARD BLACK STEEL)							26 PIPE PLUG	1	600-0007	028				
	30 GAL.	1	836-1590	087				27 CORROSION INHIBITOR							
	60 GAL.	1	836-1591	087				30-60 GAL.	1	318-0500	999				
	100 GAL.	1	836-1592	087				100 GAL.	1	318-0501	999				
	200 GAL.	1	836-1593	087				200-350 GAL.	1	318-0502	999				
	250 GAL.	1	836-1594	087				500-1000 GAL.	1	318-0503	999				
	350 GAL.	1	836-1595	087				28 PIPE PLUG							
	500 GAL.	1	836-1596	087				29 PROTECTOR RODS	2	684-0505	087				
	750 GAL.	1	836-1597	087				30 LOCKNUT							
1000 GAL.	1	836-1598	087				33 GAUGE GLASS								
9	TANK (OPTIONAL GALVANIZED)							30 GAL.	1	366-0301	516				
	30 GAL.	1	836-0327	385				60 & 100 GAL.	1	366-0303	516				
	60 GAL.	1	836-0328	385				200-1000 GAL.	1	366-0304	516				
	100 GAL.	1	836-0339	385				34 GAUGE FITTING							
	200 GAL.	1	836-0330	385				35 GAUGE FITTING	1	366-0001	644				
	250 GAL.	1	836-0331	385				37 CAPSCREW	6	168-0382	082				
	350 GAL.	1	836-0332	385				38 ADAPTER							
	500 GAL.	1	836-0333	385				30-100 GAL.	1	008-0163	010				
	750 GAL.	1	836-0334	385				200-250 GAL.	1	008-0164	010				
1000 GAL.	1	836-0335	385				350-1000 GAL.	1	008-0162	010					
10	PUMP		REFER TO PUMP SECTION					39 GASKET	1	364-1294	478				
								40 MAKE-UP VALVE							
20	BASEPLATE		REFER TO FACTORY					30-100 GAL.	1	896-4254	644				
23	LEG 30 GAL.	2	820-1320	087				200-250 GAL.	1	896-4253	644				
	60 GAL.	2	820-1321	087				350-1000 GAL.	1	896-4255	644				
	100 GAL.	2	820-1322	087				43 THERMOMETER	1	840-0023	999				
	200 GAL.	2	820-1323	087				46 PIPE PLUG	1	600-0011	028				
	250 GAL.	2	820-1324	087				47 HEX NUT							
	350 GAL.	2	820-1325	087											
	500 GAL.	2	820-1326	087											
NOTE: CAPSCREW & NUT FOR BOLTING ON LEGS NOT SHOWN.															

