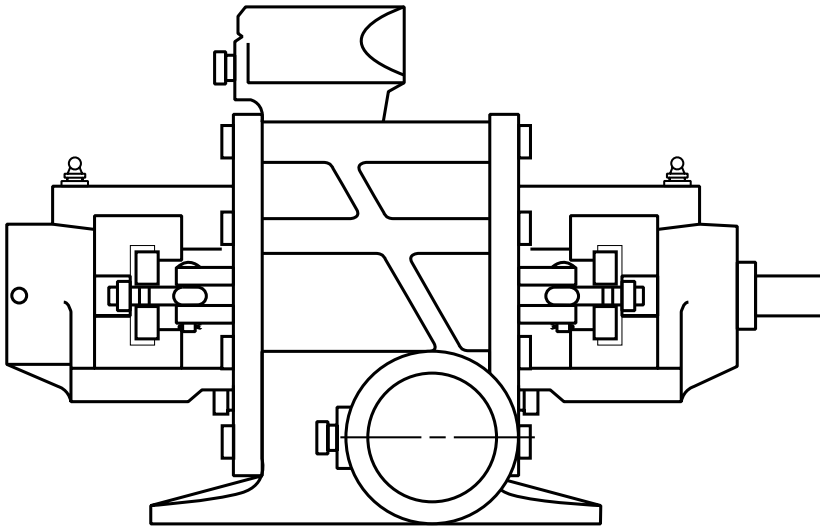


120B SERIES REPAIR PARTS INDEX



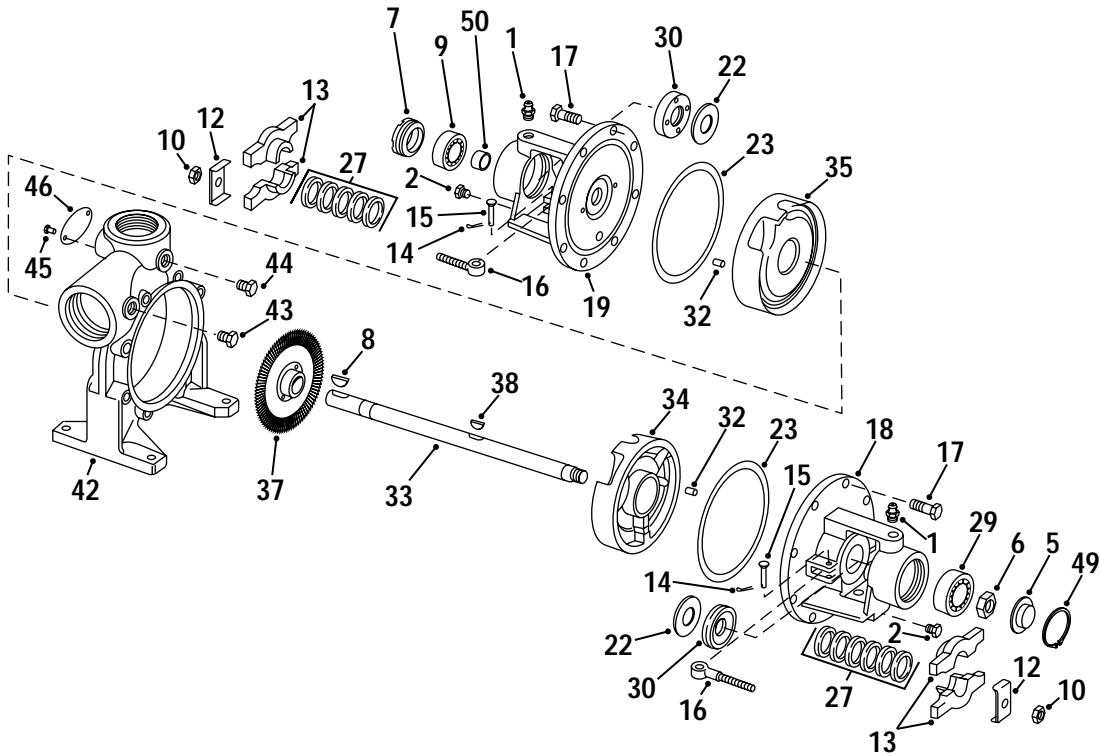
MODELS:
121B Single-Stage
122B Two-Stage

PUMP SIZES:
EX4 thru IX4
EX4T thru IX4T

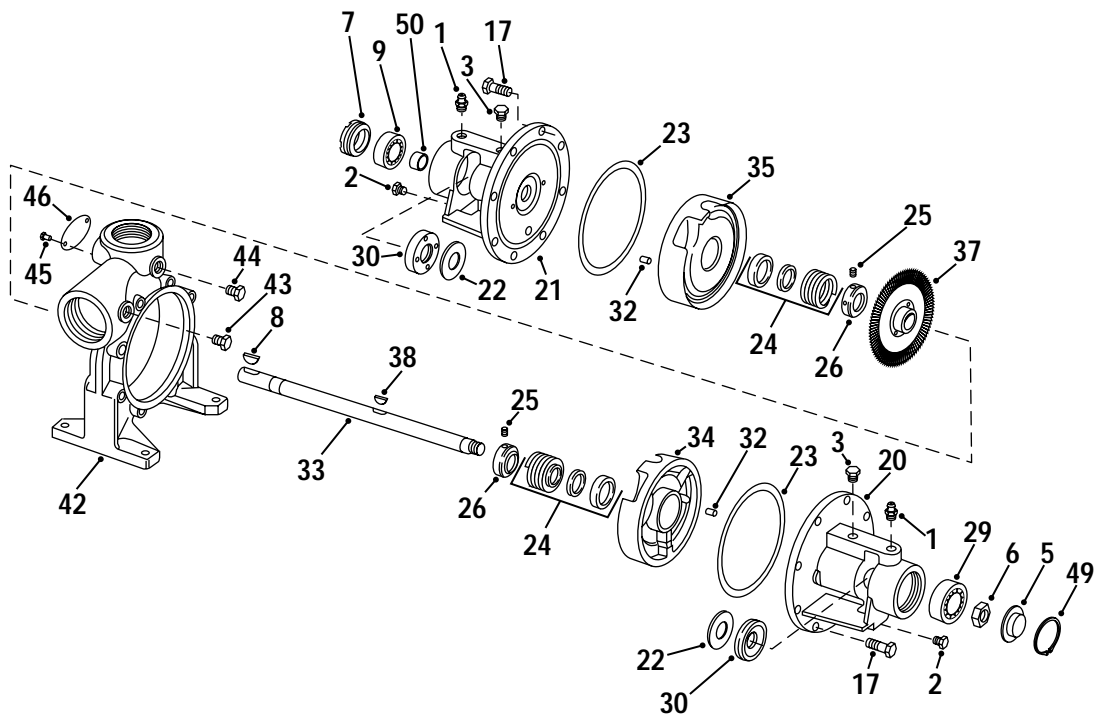
READ AND UNDERSTAND THE PUMP AND MOTOR
INSTRUCTIONS BEFORE ATTEMPTING TO INSTALL,
DISASSEMBLE OR REPAIR THE PUMP

120B SERIES

MODEL 121B
PIECE NUMBERS



MODEL 121B - SINGLE STAGE WITH PACKING



MODEL 121B - SINGLE STAGE WITH SEALS

120B SERIES
MODELS 121B - 122B
EX4 thru IX4 & EX4T thru IX4T

PARTS LIST

PC. NO.	DESCRIPTION	QTY	PART NO.	MATERIAL		
				B.F.		A.I.
1	GREASE FITTING	2	508-0001	651		651
2	PIPE PLUG					
	EX4 thru IX4	1	600-0001	087		087
	EX4 thru IX4T	2	600-0001	087		087
5	OUTBOARD RET.	1	672-0056	500		500
6	JAM NUT	1	544-0316	080		080
7	INBOARD RET.	1	672-0049	500		500
8	KEY	1	972-0006	087		087
9	BEARING	1	068-1905	647		647
10	NUT (SEE 16A)	4	544-0107	-		080
12	GLAND CLAMP					
	(SEE 16A)	4	204-0120	-		360
13	GLAND	2	372-0194	010		010
14	COTTER PIN	4	592-0405	087		087
15	CLEVIS PIN	4	592-0452	360		360
16	SWING BOLT					
	(SEE 16A)	4	100-2015	-		360
16A	SWING BOLT ASSY.					
	(SEE 10, 12, 16)	1	099-0004	644		-
17	CAPSCREW	16	168-0380	082		082
18	COVER, PACKING	1	260-5127	010		010
19	COVER, PACKING	1	260-5127	010		010
20	COVER, SEAL	1	260-5126	010		010
21	COVER, SEAL	1	260-5126	010		010
22	SLINGER	2	764-1002	478		478
23	GASKET	2	364-1198	478		478
24	SEAL	2	712-0707	755		758
25	SET SCREW	4	724-0077	104		104
26	COLLAR	2	224-0082	208		087
27	PACKING	10	564-0029	802		802
29	BEARING	1	068-0154	647		647
30	BORE RETAINER	2	672-0050	500		500
32	PIN	2	592-0632	104		104
33	SHAFT					
	EX4 thru IX4	1	728-7273	109		109
	EX4T thru IX4T	1	728-7274	109		109
34	CHANNEL RING (RIGHT HAND)					
	EX4 & EX4T	1	676-2016	010		010
	FX4 & FX4TT	1	676-2018	010		010
	GX4 & GX4T	1	676-2020	010		010
	HX4 & HX4T	1	676-2022	010		010
	IX4 & IX4T	1	676-2024	010		010

PC. NO.	DESCRIPTION	QTY	PART NO.	MATERIAL		
				B.F.		A.I.
35	CHANNEL RING (LEFT HAND)					
	EX4 & EX4T	1	676-2015	010		010
	FX4 & FX4T	1	676-2017	010		010
	GX4 & GX4T	1	676-2019	010		010
	HX4 & HX4T	1	676-2021	010		010
	IX4 & IX4T	1	676-2023	010		010
36	IMPELLER					
	EX4 & EX4T	*	444-2676	208		053
	FX4 & FX4T	*	444-2677	208		053
	GX4 & GX4T	*	444-2678	208		053
	HX4 & HX4T	*	444-2679	208		053
	IX4 & IX4T	*	444-2680	208		053
	* EX4 thru IX4 ONE REQUIRED (SINGLE STAGE)					
	* EX4T thru IX4T TWO REQUIRED (TWO STAGE)					
38	KEY	*	472-0108	100		100
39	SPACER (LEFT)					
	EX4T	1	772-0240	010		010
	FX4T	1	772-0242	010		010
	GX4T	1	772-0244	010		010
	HX4T	1	772-0246	010		010
	IX4T	1	772-0248	010		010
40	SPACER (RIGHT)					
	EX4T	1	772-0241	010		010
	FX4T	1	772-0243	010		010
	GX4T	1	772-0245	010		010
	HX4T	1	772-0247	010		010
	IX4T	1	772-0249	010		010
41	SPACER KEY	1	472-1013	104		104
42	CASING					
	EX4 thru IX4	1	180-2294	010		010
	EX4T thru IX4T	1	180-2295	010		010
44	PIPE PLUG	2	600-0002	087		087
45	DRIVE SCREW	2	708-0013	365		365
46	NAMEPLATE	1	532-0014	324		324
49	INT. RET. RING	1	676-2093	088		088
50	TOLERANCE RING	1	676-2016	114		114

**120B SERIES
MODELS 121B - 122B
EX4 thru IX4 & EX4T thru IX4T**

SECTION 120P PAGE 5
DATED JANUARY 1999
SUPERSEDES 120P PAGE 5
DATED JULY 1992

PARTS LIST

PC. NO.	DESCRIPTION	Q T Y	PART NO.	MATERIAL		
				B.F.	A.I.	
	REPAIR PARTS KIT THE FOLLOWING KITS INCLUDE PIECE NUMBERS 6, 8, 9, 22, 23, 29, 32, 33, 34, 35, 37, 38, 39, 40, 41, 47, 48, 49 PACKED PUMP KITS ALSO INCLUDE PIECE NUMBERS 13, 14, 15, 16A, 27 MECHANICAL SEAL KITS ALSO INCLUDE PIECE NUMBERS 24, 25, 26					
	KITS WITH PACKING					
	EX4		476-0662	644		
	FX4		476-0663	644		
	GX4		476-0664	644		
	HX4		476-0665	644		
	IX4		476-0666	644		
	EX4T		476-0667	644		
	FX4T		476-0668	644		
	GX4T		476-0669	644		
	HX4T		476-0670	644		
	IX4T		476-0671	644		
	KITS WITH MECHANICAL SEALS					
	EX4S		476-0672	644		
	FX4S		476-0673	644		
	GX4S		476-0674	644		
	HX4S		476-0675	644		
	IX4S		476-0676	644		
	EX4TS		476-0677	644		
	FX4TS		476-0678	644		
	GX4TS		476-0679	644		
	HX4TS		476-0680	644		
	IX4TS		476-0681	644		

NOTE:
Aurora Pump reserves the right to make revisions to its products and their specifications, and to this bulletin and related information without notice



Aurora Pumps
800 Airport Road
North Aurora, IL 60542
phone: 630-859-7000
fax: 630-859-7060