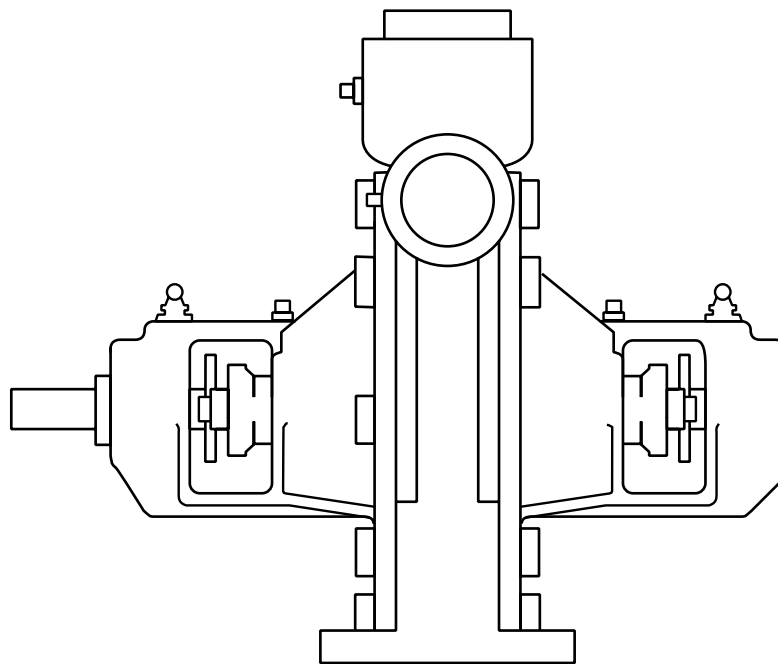


110A SERIES REPAIR PARTS INDEX



READ AND UNDERSTAND THE PUMP AND MOTOR
INSTRUCTIONS BEFORE ATTEMPTING TO INSTALL,
DISASSEMBLE OR REPAIR THE PUMP

SECTION 110P PAGE 2
DATED **APRIL 2001**

SUPERSEDES 110P PAGE 2
DATED JANUARY 1999

REFERENCE NOTES

REPAIR PARTS INDEX

PUMP MODEL	PUMP SIZE	PAGES
114A SINGLE STAGE	A35 A4 B4 C4 D4 E4 F4 G4 H4 I4 14A	6, 7 & 9
	M4 P4 R4	8 & 9
114A TWO STAGE	D4T E4T F4T G4T I4T I4TA	6, 7 & 9
115A SINGLE STAGE	D5 E5 F5 G5 H5 I5	10 & 11

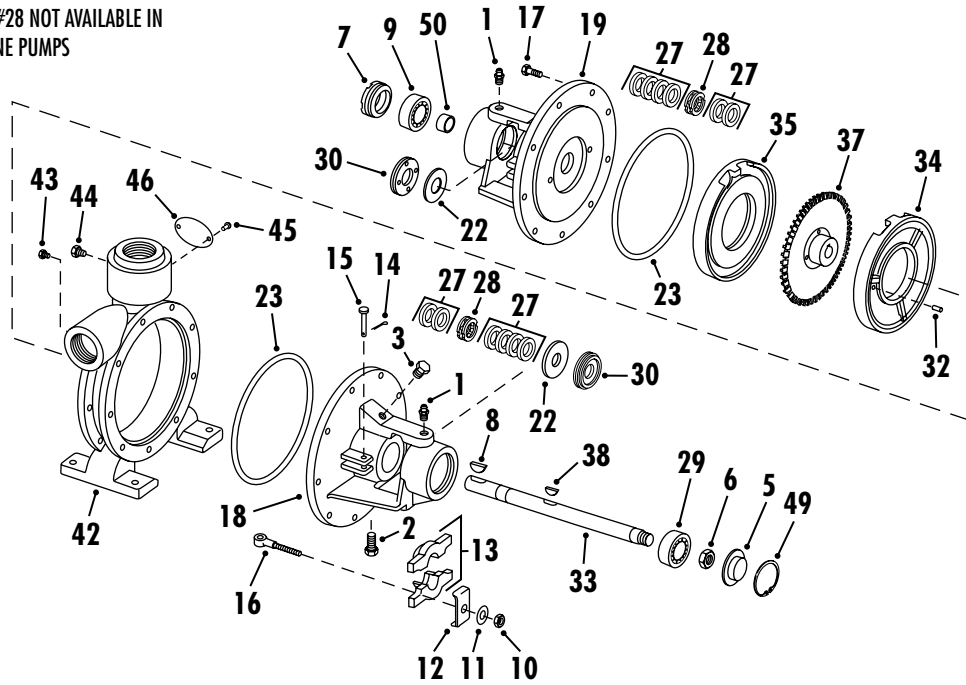
PUMP MODEL	PUMP SIZE	PAGES
115A SINGLE STAGE	J5 K5 L5 M5 N5 P5	12 & 13
115A TWO STAGE	D5T E5T F5T G5T H5T I5T	10 & 11
116A SINGLE STAGE	G6 H6 J6 K6	14 & 15
116A TWO STAGE	D6T E6T F6T G6T H6T J6T K6T	

REPAIR PARTS KITS FOR ALL PUMP SIZES MAY BE FOUND ON PAGES 9, 11, 13 AND 15 OF THIS MANUAL.

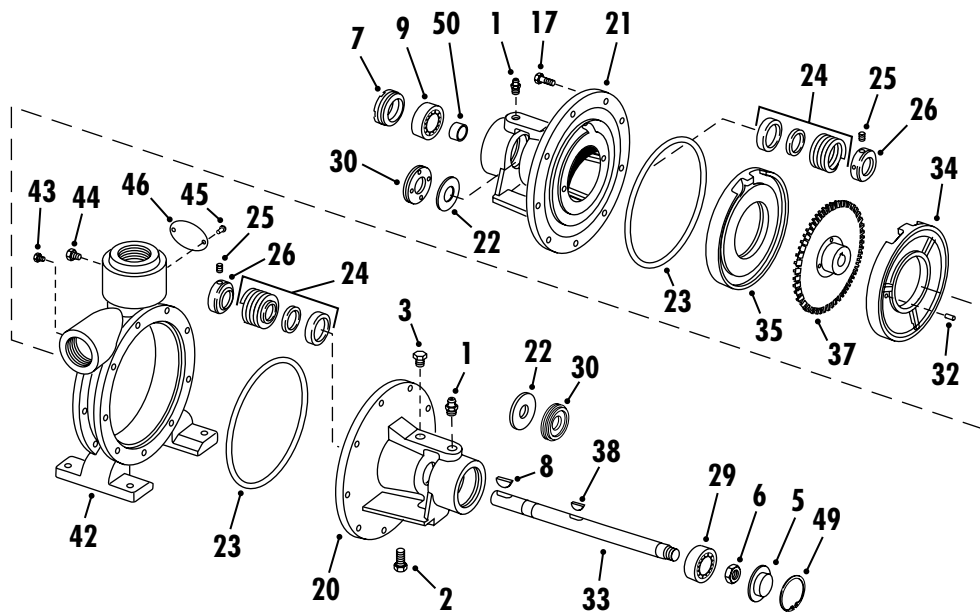
**110A SERIES
MODEL 114A-115A-116A
SINGLE STAGE PUMPS**

PIECE NUMBERS

LANTERN RING #28 NOT AVAILABLE IN
4 SERIES TURBINE PUMPS



SINGLE STAGE WITH PACKING



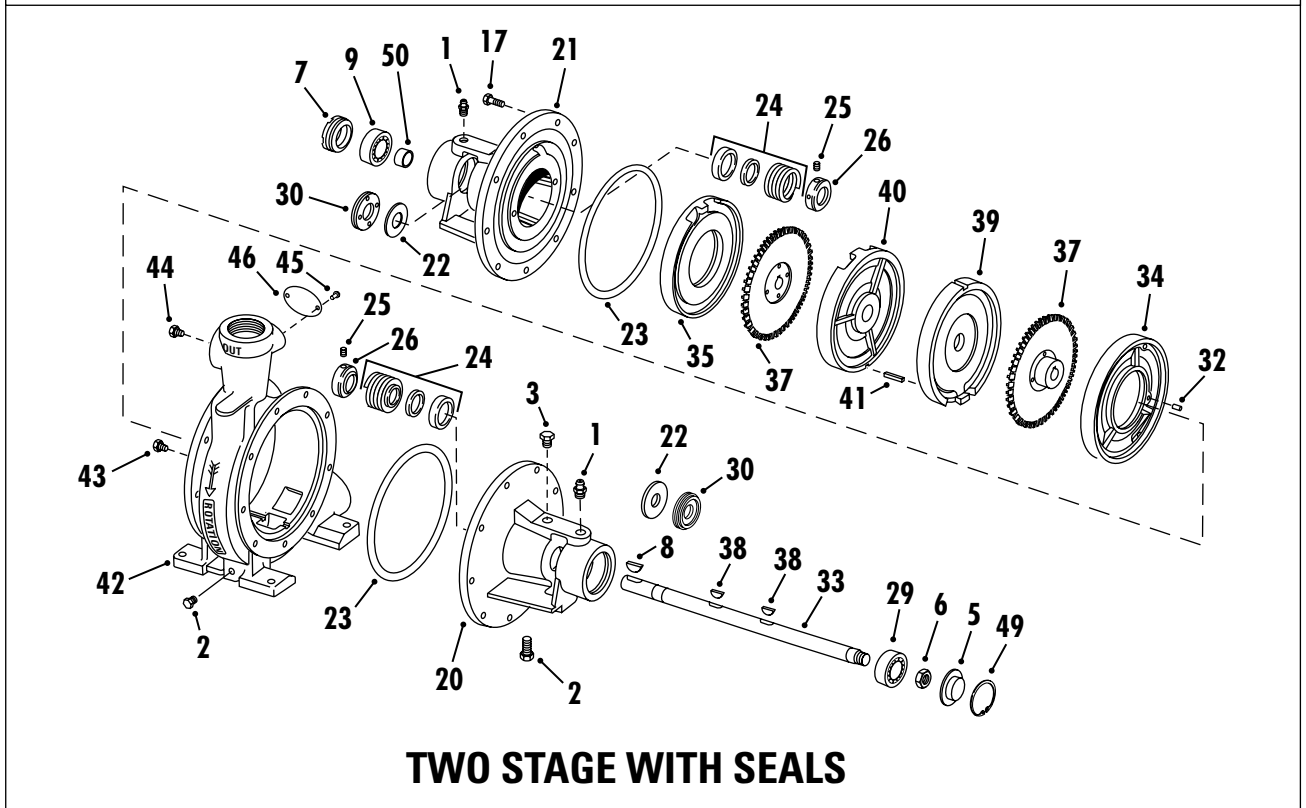
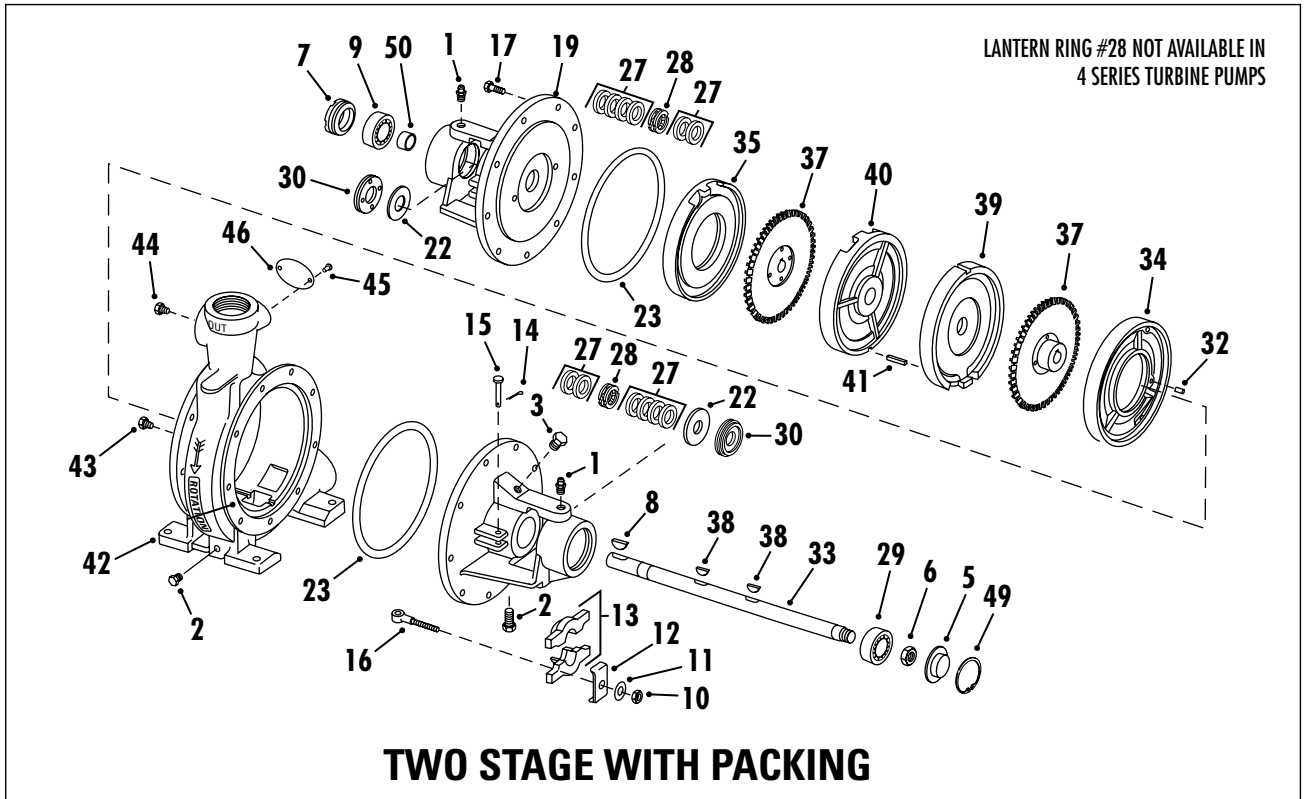
SINGLE STAGE WITH SEALS

**110A SERIES
MODEL 114A-115A-116A
TWO STAGE PUMPS**

**SECTION 110P PAGE 5
DATED APRIL 2001**

**SUPERSEDES 110P PAGE 5
DATED JANUARY 1999**

PIECE NUMBERS



**110A SERIES
MODELS 114A
A35-I4A & D4T-I4TA**

PARTS LIST

PC. NO.	DESCRIPTION	QTY	PART NO.	MATERIAL		
				B.F.	A.B.	A.I.
1	GREASE FITTING	2	508-0001	651	651	651
2	PIPE PLUG	2	600-0001	087	190	087
3	PIPE PLUG	2	600-0001	087	190	087
5	OUTBOARD RETAINER	1	672-0040	500	500	500
6	JAM NUT	1	544-0308	080	080	080
7	INBOARD RETAINER	1	672-0041	500	500	500
8	COUPLING KEY	1	472-0003	087	087	087
9	BALL BEARING	1	068-1903	647	647	647
10	GLAND NUT (SEE 16A)	4	544-0105		190	080
11	GLAND WASHER (SEE 16A)	4	908-0062		190	360
12	GLAND CLAMP	NOT REQUIRED				
13	GLAND	2	372-0208	662	660	661
14	COTTER PIN	4	592-0405	087	087	087
15	CLEVIS PIN	4	592-0452	360	360	360
16	SWING BOLT	4	100-2015		190	360
16A	SWING BOLT ASSY. (10, 11, 16)	4	099-0001	644		644
17	CAPSCREW	16	168-0256	082	190	082
18	PACKING COVER, RH	1	260-5095	010	208	010
19	PACKING COVER, LH	1	260-5096	010	208	010
20	SEAL COVER, R.H.	1	260-5093	010	208	010
21	SEAL COVER, L.H.	1	260-5094	010	108	010
22	WATER SLINGER	2	764-1000	478	478	478
23	COVER GASKET	2	364-1198	478	478	478
24	MECHANICAL SEAL	2	712-6444	749		749
		2	712-0703		754	
25	SETSCREW	4	724-0077	113	113	113
26	DRIVE COLLAR	2	224-0083	208	208	087
27	PACKING	8	564-0026	802	802	802
29	BALL BEARING	1	068-0151	647	647	647
30	BORE RETAINER	2	672-0042	500	500	500
32	COVER LOCK PIN	2	592-0632	104	104	104
33	SHAFT A35-I4A*	1	728-7258	629	629	629
	SHAFT D4T-I4TA*	1	728-7259	629	629	629
34	CHANNEL RING	1	676-1392	370	208	370
		1	676-1358	370	208	370
		1	676-1360	370	208	370
		1	676-1362	370	208	370

PC. NO.	DESCRIPTION	QTY	PART NO.	MATERIAL		
				B.F.	A.B.	A.I.
		D4	1 676-1364	370		370
		D4	1 676-1686		208	
		E4	1 676-1366	010	208	010
		F4	1 676-1368	010	208	010
		G4	1 676-1370	010	208	010
		H4	1 676-1372	010	208	010
		I4	1 676-1374	010	208	010
		I4A	1 676-1378	010	208	010
35	CHANNEL RING	A35	1 676-1393	370	208	370
		A4	1 676-1359	370	208	370
		B4	1 676-1361	370	208	370
		C4	1 676-1363	370	208	370
		D4	1 676-1365	370		370
		D4	1 686-1687		208	
		E4	1 676-1367	010	208	010
		F4	1 676-1369	010	208	010
		G4	1 676-1371	010	208	010
		H4	1 676-1373	010	208	010
		I4	1 676-1375	010	208	010
		I4A	1 676-1379	010	208	010
37	IMPELLER	A35	* 444-0786	199	199	053
		A4	* 444-0784	199	199	053
		B4	* 444-0786	199	199	053
		C4	* 444-0788	199	199	053
		D4-D4T	* 444-0790	199	199	053
		E4-E4T	* 444-0792	199	199	053
		F4-F4T	* 444-0794	199	199	053
		G4-G4T	* 444-0796	199	199	053
		H4	* 444-0798	199	199	053
		I4-I4T	* 444-0800	199	199	053
		I4A-I4TA	* 444-0802	199	199	053
			*A35-I4A – ONE REQUIRED (SINGLE STAGE)			
			*D4T-I4TA – TWO REQUIRED (TWO STAGE)			
38	IMPELLER KEY	*	472-0105	100	100	100
39	SPACER (PART OF PC NO. 40)					

* INCLUDES SHAFT AND TOLERANCE RING PC. NO. 50

**110A SERIES
MODELS 114A
A35-I4A & D4T-I4TA**

SECTION 110P PAGE 7
DATED **APRIL 2001**
SUPERSEDES 110P PAGE 7
DATED JANUARY 1999

PARTS LIST

PC. NO.	DESCRIPTION	QTY	PART NO.	MATERIAL			
				B.F.	A.B.	A.I.	
40	SPACER	D4T	1 772-0109	370	208	370	
		E4T	1 772-0110	010	208	010	
		F4T	1 772-0111	010	208	010	
		G4T	1 772-0112	010	208	010	
		I4T	1 772-0114	010	208	010	
		I4TA	1 772-0115	010	208	010	
41	SPACER KEY	1	472-1011	104	104	104	
42	CASING A35-I4A	1	180-0608	010	208	010	
	CASING D4T-I4TA	1	180-1854	010	208	010	
43	PIPE PLUG	1	600-0002	087	190	087	
44	PIPE PLUG	1	600-0002	087	190	087	
45	NAMEPLATE PIN	2	708-0013	365	365	365	
46	NAMEPLATE	1	532-0014	324	324	324	
49	INTERNAL						
	RET. RING	1	676-2092	088	088	088	
50	TOLERANCE RING	1	676-2105	114	114	114	

NOTE: For A35-I4A and D4T-I4TA repair parts kits, refer to page 9.

110A SERIES
 MODELS 114A
 M4-R4

PARTS LIST

PC. NO.	DESCRIPTION	QTY	PART NO.	MATERIAL			
				B.F.	A.B.	A.I.	
1	GREASE FITTING	2	508-0001	651	651	651	
2	PIPE PLUG	2	600-0001	087	190	087	
3	PIPE PLUG	2	600-0001	087	190	087	
5	OUTBOARD RETAINER	1	672-0056	500	500	500	
6	JAM NUT	1	544-0316	080	080	080	
7	INBOARD RETAINER	1	672-0049	500	500	500	
8	COUPLING KEY	1	472-0006	087	087	087	
9	BALL BEARING	1	068-1905	647	647	647	
10	GLAND NUT (SEE 16A)	4	544-0105		190		
11	WASHER	NOT REQUIRED					
12	GLAND CLAMP (SEE 16A)	4	204-0120		190		
13	SPLIT GLAND	2	372-0097		208		
		2	372-0194	010		010	
14	COTTER PIN	4	592-0405	087	087	087	
15	CLEVIS PIN	4	592-0452	360	360	360	
16	SWING BOLT	4	100-2015		190		
16A	SWING BOLT ASSY. (10, 12, 16)	4	099-0004	644		644	
17	CAPSCREW	16	168-0256	087	190	082	
18	PACKING COVER, R.H.	1	260-5099	010	208	010	
19	PACKING COVER, L.H.	1	260-5100	010	208	010	
20	SEAL COVER, R.H.	1	260-5097	010	208	010	
21	SEAL COVER, L.H.	1	260-5098	010	208	010	
22	WATER SLINGER	2	764-1002	478	478	478	
23	COVER GASKET	2	364-1198	478	478	478	
24	MECHANICAL SEAL	2	712-0707	755	754	758	
25	SETSCREW	4	724-0077	104	104	104	
26	DRIVE COLLAR	2	224-0082	208	208	087	
27	PACKING	10	564-0029	802	802	802	
29	BALL BEARING	1	068-0154	647	647	647	
30	BORE RETAINER	2	672-0050	500	500	500	
32	COVER LOCK PIN	2	592-0632	104	104	104	
33	SHAFT M4-R4*	1	728-7266	629	629	629	

PC. NO.	DESCRIPTION	QTY	PART NO.	MATERIAL			
				B.F.	A.B.	A.I.	
34	CHANNEL	M4	1	676-1430	010	208	010
	RING	P4	1	676-1432	010	208	010
		R4	1	676-1434	010	208	010
35	CHANNEL	M4	1	676-1431	010	208	010
	RING	P4	1	676-1433	010	208	010
		R4	1	676-1435	010	208	010
37	IMPELLER	M4	1	444-2666	199	199	053
		P4	1	444-2667	199	199	053
		R4	1	444-2668	199	199	053
38	IMPELLER KEY	1	472-0107	100	100	100	
42	CASING M4-R4	1	180-1853	010	208	010	
43	PIPE PLUG	1	600-0002	087	190	087	
44	PIPE PLUG	1	600-0002	087	190	087	
45	NAMEPLATE PIN	2	708-0013	365	365	365	
46	NAMEPLATE	1	532-0014	324	324	324	
49	INTERNAL RET. RING						
			1	676-2093	088	088	088
50	TOLERANCE RING						
			1	676-2106	114	114	114

* INCLUDES SHAFT AND TOLERANCE RING PC. NO. 50

**110A SERIES
MODELS 114A
A35-I4A & D4T-I4TA
M4-R4
PARTS LIST**

SECTION 110P PAGE 9
DATED APRIL 2001
SUPERSEDES 110P PAGE 9
DATED JANUARY 1999

PC. NO.	DESCRIPTION	QTY	PART NO.	MATERIAL			
				B.F.	A.B.	A.I.	B.R.
	REPAIR PARTS KIT THE FOLLOWING KITS INCLUDE PIECE NUMBERS 5, 6, 7, 8, 9, 22, 23, 29, 30, 32, 33, 34, 35, 37, 38, 39, 40, 41, 49, 50 PACKED PUMP KITS ALSO INCLUDE PIECE NO. 10, 12, 13, 14, 15, 16, 27 MECHANICAL SEAL KITS ALSO INCLUDE PIECE NUMBERS 24, 25, 26.						
	KITS WITH PACKING						
	A35		476-0485	644	643	642	554
	A4		476-0486	644	643	642	554
	B4		476-0487	644	643	642	554
	C4		476-0488	644	643	642	554
	D4		476-0489	644	643	642	554
	E4		476-0490	644	643	642	554
	F4		476-0491	644	643	642	554
	G4		476-0492	644	643	642	554
	H4		476-0493	644	643	642	554
	I4		476-0494	644	643	642	554
	I4A		476-0495	644	643	642	554
	M4		476-0496	644	643	642	554
	P4		476-0497	644	643	642	554
	R4		476-0498	644	643	642	554
	D4T		476-0499	644	643	642	554
	E4T		476-0500	644	643	642	554
	F4T		476-0501	644	643	642	554
	G4T		476-0502	644	643	642	554
	I4T		476-0503	644	643	642	554
	I4TA		476-0504	644	643	642	554
	KITS WITH MECHANICAL SEALS						
	A35S		476-0525	644	643	642	554
	A4S		476-0526	644	643	642	554
	B4S		476-0527	644	643	642	554
	C4S		476-0528	644	643	642	554
	D4S		476-0529	644	643	642	554
	E4S		476-0530	644	643	642	554
	F4S		476-0531	644	643	642	554
	G4S		476-0532	644	643	642	554

PC. NO.	DESCRIPTION	QTY	PART NO.	MATERIAL			
				B.F.	A.B.	A.I.	B.R.
	KITS WITH MECHANICAL SEALS (CONTINUED)						
	H4S		476-0533	644	643	642	554
	I4S		476-0534	644	643	642	554
	I4AS		476-0535	644	643	642	554
	M4S		476-0536	644	643	642	554
	P4S		476-0537	644	643	642	554
	R4S		476-0538	644	643	642	554
	D4TS		476-0539	644	643	642	554
	E4TS		476-0540	644	643	642	554
	F4TS		476-0541	644	643	642	554
	G4T		476-0542	644	643	642	554
	I4TS		476-0543	644	643	642	554
	I4TAS		476-0544	644	643	642	554

**110A SERIES
MODELS 115A
D5-I5 & D5T-I5T**

PARTS LIST

PC. NO.	DESCRIPTION	QTY	PART NO.	MATERIAL			
				B.F.	A.B.	A.I.	
1	GREASE FITTING	2	508-0001	651	651	651	
2	PIPE PLUG	2	600-0001	087	190	087	
3	PIPE PLUG	2	600-0001	087	190	087	
5	OUTBOARD RETAINER	1	672-0048	500	500	500	
6	JAM NUT	1	544-0316	080	080	080	
7	INBOARD RETAINER	1	672-0049	500	500	500	
8	COUPLING KEY	1	472-0006	087	087	087	
9	BALL BEARING	1	068-1905	647	647	647	
10	GLAND NUT (SEE 16A)	4	544-0107		190		
11	WASHER	NOT REQUIRED					
12	GLAND CLAMP (SEE 16A)	4	204-0120		190		
13	SPLIT GLAND	2	372-0097		208		
		2	372-0194	010		010	
14	COTTER PIN	4	592-0405	087	087	087	
15	CLEVIS PIN	4	592-0457	360	360	360	
16	SWING BOLT	4	100-0216		190		
16A	SWING BOLT ASSY. (10, 12, 16)	4	099-0002	644		644	
17	CAPSCREW	18	168-0380	082	190	082	
18	PACKING COVER, R.H.	1	260-5104	010	208	010	
19	PACKING COVER, L.H.	1	260-5103	010	208	010	
20	SEAL COVER, R.H.	1	260-5102	010	208	010	
21	SEAL COVER L.H.	1	260-5101	010	208	010	
22	WATER SLINGER	2	764-1002	478	478	478	
23	COVER GASKET	2	364-1063	478	478	478	
24	MECHANICAL SEAL	2	712-0707	755	754	758	
25	SETSCREW	4	724-0077	104	104	104	
26	DRIVE COLLAR	2	224-0082	208	208	087	
27	PACKING	14	564-0029	802	802	802	
28	LANTERN RING	2	676-1476	512	512	512	
29	BALL BEARING	1	068-0154	647	647	647	
30	BORE RETAINER	2	672-0050	500	500	500	
32	COVER LOCK PIN	2	592-0632	104	104	104	
33	SHAFT D5-I5*	1	728-7260	629	629	629	
	SHAFT D5T-I5T*	1	728-7261	629	629	629	
34	CHANNEL RING	D5	1	676-1322	010	208	010
		E5	1	676-1323	010	208	010
		F5	1	676-1326	010	208	010
		G5	1	676-1328	010	208	010

PC. NO.	DESCRIPTION	QTY	PART NO.	MATERIAL			
				B.F.	A.B.	A.I.	
34	CHANNEL RING	H5	1	676-1330	010	208	010
		I5	1	676-1317	010	208	010
35	CHANNEL RING	D5	1	676-1321	010	208	010
		E5	1	676-1324	010	208	010
		F5	1	676-1325	010	208	010
		G5	1	676-1327	010	208	010
		H5	1	676-1329	010	208	010
		I5	1	676-1318	010	208	010
37	IMPELLER D5-D5T	*	444-1701	199	199	053	
	E5-E5T	*	444-1701	199	199	053	
	F5-F5T	*	444-1702	199	199	053	
	G5-G5T	*	444-1703	199	199	053	
	H5-H5T	*	444-1704	199	199	053	
	I5-I5T	*	444-1704	199	199	053	
*D5-I5 ONE REQUIRED (SINGLE STAGE)							
*D5T-I5T TWO REQUIRED (TWO STAGE)							
38	IMPELLER KEY	*	472-0108	100	100	100	
39	SPACER	D5T	1	772-0080	010	208	010
		ET5	1	772-0084	010	208	010
		F5T	1	772-0092	010	208	010
		G5T	1	772-0096	010	208	010
		H5T	1	772-0072	010	208	010
		I5T	1	772-0076	010	208	010
40	SPACER	D5T	1	772-0078	010	208	010
		E5T	1	772-0082	010	208	010
		F5T	1	772-0090	010	208	010
		G5T	1	772-0094	010	208	010
		H5T	1	772-0070	010	208	010
		I5T	1	772-0074	010	208	010
41	SPACER KEY		1	472-1011	113	113	113
42	CASING D5-I5		1	180-1855	010	208	010
	CASING D5T-I5T		1	180-1857	010		010
			1	180-0570		208	
43	PIPE PLUG		1	600-0002	087	190	087
44	PIPE PLUG		1	600-0002	087	190	087
45	NAMEPLATE PIN		2	708-0013	365	365	365
46	NAMEPLATE		1	532-0014	324	324	324
49	INT. RET. RING		1	676-2093	088	088	088
50	TOLERANCE RING		1	676-2106	114	114	114

* INCLUDES SHAFT AND TOLERANCE RING PC. NO. 50

**110A SERIES
MODELS 115A
D5-I5 & D5T-I5T**

SECTION 110P PAGE 11
DATED APRIL 2001

SUPERSEDES 110P PAGE 11
DATED JANUARY 1999

PARTS LIST

PC. NO.	DESCRIPTION	Q T Y	PART NO.	MATERIAL			
				B.F.	A.B.	A.I.	B.R.
	REPAIR PARTS KIT						
	THE FOLLOWING KITS						
	INCLUDE PIECE NUMBERS						
	5, 6, 7, 8, 9, 22, 23, 29, 30, 32, 33,						
	34, 35, 37, 38, 39, 40, 41, 49, 50						
	PACKED PUMP KITS ALSO						
	INCLUDE PIECE NO. 10, 12,						
	13, 14, 15, 16, 27						
	MECHANICAL SEAL KITS						
	ALSO INCLUDE						
	PIECE NUMBERS 24, 25, 26.						
	KITS WITH PACKING						
	D5		476-0474	644	643	642	554
	E5		476-0475	644	643	642	554
	F5		476-0473	644	643	642	554
	G5		476-0476	644	643	642	554
	H5		476-0477	644	643	642	554
	I5		476-0478	644	643	642	554
	D5T		476-0479	644	643	642	554
	E5T		476-0480	644	643	642	554
	F5T		476-0481	644	643	642	554
	G5T		476-0482	644	643	642	554
	H5T		476-0483	644	643	642	554
	I5T		476-0484	644	643	642	554
	KITS WITH MECHANICAL SEALS						
	D5S		476-0545	644	643	642	554
	E5S		476-0546	644	643	642	554
	F5S		476-0547	644	643	642	554
	G5S		476-0548	644	643	642	554
	H5S		476-0549	644	643	642	554
	I5S		476-0550	644	643	642	554
	D5TS		476-0557	644	643	642	554
	E5TS		476-0558	644	643	642	554
	F5TS		476-0559	644	643	642	554
	G5TS		476-0560	644	643	642	554
	H5TS		476-0561	644	643	642	554
	I5TS		476-0562	644	643	642	554

110A SERIES
 MODELS 115A
 J5-P5

PARTS LIST

PC. NO.	DESCRIPTION	QTY	PART NO.	MATERIAL			
				B.F.	A.B.	A.I.	
1	GREASE FITTING	2	508-0001	651	651	651	
2	PIPE PLUG	2	600-0001	087	190	087	
3	PIPE PLUG	2	600-0001	087	190	087	
5	OUTBOARD RETAINER	1	672-0059	500	500	500	
6	JAM NUT	1	544-0318	080	080	080	
7	INBOARD RETAINER	1	672-0060	500	500	500	
8	COUPLING KEY	1	472-0011	087	087	087	
9	BALL BEARING	1	068-1906	647	647	647	
10	GLAND NUT (SEE 16A)	4	544-0107		190		
11	WASHER	NOT REQUIRED					
12	GLAND CLAMP (SEE 16A)	4	204-0120		190		
13	SPLIT GLAND	2	372-0095		208		
		2	372-0195	010		010	
14	COTTER PIN	4	592-0405	087	087	087	
15	CLEVIS PIN	4	592-0457	360	360	360	
16	SWING BOLT	4	100-0216		190		
16A	SWING BOLT ASSY. (10, 12, 16)	4	099-0002	644		644	
17	CAPSCREW	18	168-0380	082	190	082	
18	PACKING COVER, R.H.	1	260-5108	010	208	010	
19	PACKING COVER, L.H.	1	260-5107	010	208	010	
20	SEAL COVER, R.H.	1	260-5109	010	208	010	
21	SEAL COVER L.H.	1	260-5110	010	208	010	
22	WATER SLINGER	2	764-1004	478	478	478	
23	COVER GASKET	2	364-1063	478	478	478	
24	MECHANICAL SEAL	2	712-6452	755	754	758	
25	SETSCREW	4	724-0077	104	104	104	
26	DRIVE COLLAR	2	224-0227	208	208	087	
27	PACKING	14	564-0051	802	802	802	
28	LANTERN RING	2	676-1114	512	512	512	
29	BALL BEARING	1	068-0155	647	647	647	
30	BORE RETAINER	2	672-0061	500	500	500	
32	COVER LOCK PIN	2	592-0632	104	104	104	
33	SHAFT J5-P5*	1	728-7267	629	629	629	
34	CHANNEL RING	J5	1 676-1333	010	208	010	
		K5	1 676-1335	010	208	010	
		L5	1 676-1337	010	208	010	
		M5	1 676-1386	010	208	010	
		N5	1 676-1388	010	208	010	

PC. NO.	DESCRIPTION	QTY	PART NO.	MATERIAL			
				B.F.	A.B.	A.I.	
34	CHANNEL RING	P5	1 676-1390	010	208	010	
35	CHANNEL RING	J5	1 676-1332	010	208	010	
		K5	1 676-1334	010	208	010	
		L5	1 676-1336	010	208	010	
		M5	1 676-1387	010	208	010	
		N5	1 676-1389	010	208	010	
		P5	1 676-1391	010	208	010	
37	IMPELLER	J5	1 444-2671	199	199	053	
		K5	1 444-2670	199	199	053	
		L5	1 444-2675	199	199	053	
		M5	1 444-2674	199	199	053	
		N5	1 444-2673	199	199	053	
		P5	1 444-2672	199	199	053	
38	IMPELLER KEY	1	472-0112	100	100	100	
42	CASING J5-P5	1	180-1856	010		010	
		1	180-0448		208		
43	PIPE PLUG	1	600-0002	087	190	087	
44	PIPE PLUG	1	600-0002	087	190	087	
45	NAMEPLATE PIN	2	708-0013	365	365	365	
46	NAMEPLATE	1	532-0014	324	324	324	
49	INT. RET. RING	1	676-2094	088	088	088	
50	TOLERANCE RING	1	676-2107	114	114	114	

* INCLUDES SHAFT AND TOLERANCE RING PC. NO. 50

**110A SERIES
MODELS 115A
J5-P5**

SECTION 110P PAGE 13
DATED APRIL 2001

SUPERSEDES 110P PAGE 13
DATED JANUARY 1999

PARTS LIST

PC. NO.	DESCRIPTION	QTY	PART NO.	MATERIAL			
				B.F.	A.B.	A.I.	B.R.
	REPAIR PARTS KIT						
	THE FOLLOWING KITS						
	INCLUDE PIECE NUMBERS						
	5, 6, 7, 8, 9, 22, 23, 29, 30, 32, 33,						
	34, 35, 37, 38, 39, 40, 41, 49, 50						
	PACKED PUMP KITS ALSO						
	INCLUDE PIECE NO. 10, 12,						
	13, 14, 15, 16, 27						
	MECHANICAL SEAL KITS						
	ALSO INCLUDE						
	PIECE NUMBERS 24, 25, 26.						
	KITS WITH PACKING						
	J5		476-0506	644	643	642	554
	K5		476-0507	644	643	642	554
	L5		476-0508	644	643	642	554
	M5		476-0509	644	643	642	554
	N5		476-0510	644	643	642	554
	P5		476-0511	644	643	642	554
	KITS WITH MECHANICAL SEALS						
	J5S		476-0551	644	643	642	554
	K5S		476-0552	644	643	642	554
	L5S		476-0553	644	643	642	554
	M5S		476-0554	644	643	642	554
	N5S		476-0555	644	643	642	554
	P5S		476-0556	644	643	642	554

**110A SERIES
MODELS 116A
D6-K6 & D6T-K6T**

PARTS LIST

PC. NO.	DESCRIPTION	QTY	PART NO.	MATERIAL		
				B.F.	A.B.	A.I.
1	GREASE FITTING	2	508-0001	651	651	651
2	PIPE PLUG	2	600-0001	087	190	087
3	PIPE PLUG	2	600-0001	087	190	087
5	OUTBOARD RETAINER	1	672-0053	500	500	500
6	JAM NUT	1	544-0320	080	080	080
7	INBOARD RETAINER	1	672-0054	500	500	500
8	COUPLING KEY	1	472-0013	087	087	087
9	BALL BEARING	1	068-1907	647	647	647
10	GLAND NUT (SEE 16A)	4	544-0109		190	
11	WASHER	NOT REQUIRED				
12	GLAND CLAMP (SEE 16A)	4	204-0120		190	
13	SPLIT GLAND	2	372-0104		208	
		4	372-0159	010		010
14	COTTER PIN	4	592-0405	087	087	087
15	CLEVIS PIN	4	592-0462	360	360	360
16	SWING BOLT	4	100-2010		190	
16A	SWING BOLT ASSY. (10, 12, 16)	4	099-0003	644		664
17	CAPSCREW	20	168-0488	082	190	082
18	PACKING COVER, R.H.	1	260-5106	010	208	010
19	PACKING COVER, L.H.	1	260-5106	010	208	010
20	SEAL COVER, R.H.	1	260-5105	010	208	010
21	SEAL COVER L.H.	1	260-5105	010	208	010
22	WATER SLINGER	2	764-1005	478	478	478
23	COVER GASKET	2	364-1065	478	478	478
24	MECHANICAL SEAL	2	712-0713	755	754	758
25	SETSCREW	4	724-0077	104	104	104
26	DRIVE COLLAR	2	224-0084	208	208	087
27	PACKING	16	564-0064	802	802	802
28	LANTERN RING	2	676-1471	512	512	512
29	BALL BEARING	1	068-0156	647	647	647
30	BORE RETAINER	2	672-0055	500	500	500
32	COVER LOCK PIN	2	592-0632	104	104	104
33	SHAFT G-H-J-K6*	1	728-7264	629	629	629
	SHAFT D-E-F6T*	1	728-7263	629	629	629
	SHAFT G-H-J-K6T*	1	728-7265	629	629	629
34	CHANNEL RING D6T	1	676-1406	010	208	010
	E6T	1	676-1408	010	208	010
	F6T	1	676-1402	010	208	010

PC. NO.	DESCRIPTION	QTY	PART NO.	MATERIAL		
				B.F.	A.B.	A.I.
34	CHANNEL RING G6-G6T	1	676-0239	010		010
	G6-G6T	1	676-1410		208	
	H6-H6T	1	676-0241	010		010
	H6-H6T	1	676-1412		208	
	J6-J6T	1	676-0243	010		010
	J6-J6T	1	676-1414		208	
	K6-K6T	1	676-0245	010		010
	K6-K6T	1	676-1404		208	
35	CHANNEL RING D6T	1	676-1407	010	208	010
	E6T	1	676-1409	010	208	010
	F6T	1	676-1403	010	208	010
	G6-G6T	1	676-0240	010		010
	G6-G6T	1	676-1411		208	
	H6-H6T	1	676-0242	010		010
	H6-H6T	1	676-1413		208	
	J6-J6T	1	676-0244	010		010
	J6-J6T	1	676-1415		208	
	K6-K6T	1	676-0246	010		010
	K6-K6T	1	676-1405		208	
37	IMPELLER D6T	*	444-0737	199	199	053
	E6T	*	444-0729	199	199	053
	F6T	*	444-0727	199	199	053
	G6-G6T	*	444-0731	199	199	053
	H6-H6T	*	444-0733	199	199	053
	J6-J6T	*	444-0735	199	199	053
	K6-K6T	*	444-0774	199	199	053
*D6-K6 - ONE REQUIRED (SINGLE STAGE)						
*D6T-K6T - TWO REQUIRED (TWO STAGE)						
38	IMPELLER KEY	*	472-0115	100	100	100
39	SPACER D6T	1	772-0051	010	208	010
	E6T	1	772-0054	010	208	010
	F6T	1	772-0049	010	208	010
	G6T	1	772-0217	010		010
	G6T	NOT REQUIRED IN AB				
	H6T	1	772-0219	010		010
	H6T	NOT REQUIRED IN AB				
	J6T	1	772-0221	010		010
	J6T	NOT REQUIRED IN AB				
	K6T	1	772-0223	010		010
	K6T	NOT REQUIRED IN AB				
40	SPACER D6T	1	772-0052	010	208	010

* INCLUDES SHAFT AND TOLERANCE RING PC. NO. 50

**110A SERIES
MODELS 116A
D6-K6 & D6T-K6T**

SECTION 110P PAGE 15
DATED APRIL 2001

SUPERSEDES 110P PAGE 15
DATED JANUARY 1999

PARTS LIST

PC. NO.	DESCRIPTION	QTY	PART NO.	MATERIAL			
				B.F.	A.B.	A.I.	
40	SPACER	E6T	1 772-0053	010	208	010	
		F6T	1 772-0050	010	208	010	
		G6T	1 772-0128		208		
		G6T	1 772-0218	010		010	
		H6T	1 772-0127		208		
		H6T	1 772-0220	010		010	
		J6T	1 772-0126		208		
		J6T	1 772-0222	010		010	
		K6T	1 772-0125		208		
		K6T	1 772-0224	010		010	
40	SPACER KEY	1	472-1013	104	104	104	
43	CASING G-H-J-K6	1	180-1859	010		010	
		1	180-0453		208		
		CASING D-E-F6T	1	180-1861	010	208	010
		CASING G-H-J-K6T	1	180-1860	010	208	010
	43	PIPE PLUG	1	600-0002	087	190	087
	44	PIPE PLUG	1	600-0002	087	190	087
	45	NAMEPLATE PIN	2	708-0013	365	365	365
	46	NAMEPLATE	1	532-0014	324	324	324
	49	INT. RET. RING	1	676-2095	088	088	088
	50	TOLERANCE RING	1	676-2108	114	114	114

PC. NO.	DESCRIPTION	QTY	PART NO.	MATERIAL		
				B.F.	A.B.	A.I.
	REPAIR PARTS KIT					
	THE FOLLOWING KITS					
	INCLUDE PIECE NUMBERS					
	5, 6, 7, 8, 9, 22, 23, 29, 30, 32, 33,					
	34, 35, 37, 38, 39, 40, 41, 49, 50					
	PACKED PUMP KITS ALSO					
	INCLUDE PIECE NO. 10, 12,					
	13, 14, 15, 16, 27					
	MECHANICAL SEAL KITS					
	ALSO INCLUDE					
	PIECE NUMBERS 24, 25, 26.					
	KITS WITH PACKING					
	G6		476-0512	644	643	642 554
	H6		476-0513	644	643	642 554
	J6		476-0514	644	643	642 554
	K6		476-0515	644	643	642 554
	D6T		476-0516	644	643	642 554
	E6T		476-0517	644	643	642 554
	F6T		476-0518	644	643	642 554
	G6T		476-0519	644	643	642 554
	H6T		476-0520	644	643	642 554
	J6T		476-0521	644	643	642 554
	K6T		476-0522	644	643	642 554
	KITS WITH MECHANICAL SEALS					
	G6S		476-0563	644	643	642 554
	H6S		476-0564	644	643	642 554
	J6S		476-0565	644	643	642 554
	K6S		476-0566	644	643	642 554
	D6TS		476-0567	644	643	642 554
	E6TS		476-0568	644	643	642 554
	F6TS		476-0569	644	643	642 554
	G6TS		476-0570	644	643	642 554
	H6TS		476-0571	644	643	642 554
	J6TS		476-0572	644	643	642 554
	K6TS		476-0573	644	643	642 554

NOTE:

Aurora Pump reserves the right to make revisions to its products and their specifications, and to this bulletin and related information without notice

ap AURORA®

PENTAIR PUMP GROUP

Aurora Pumps

800 Airport Road
North Aurora, IL 60542
phone: 630-859-7000
fax: 630-859-7060