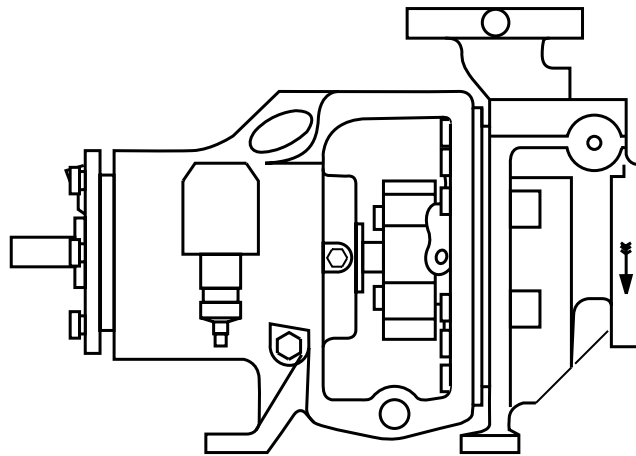


150 SERIES REPAIR PARTS INDEX



READ AND UNDERSTAND THE PUMP AND MOTOR
INSTRUCTIONS BEFORE ATTEMPTING TO INSTALL,
DISASSEMBLE OR REPAIR THE PUMP

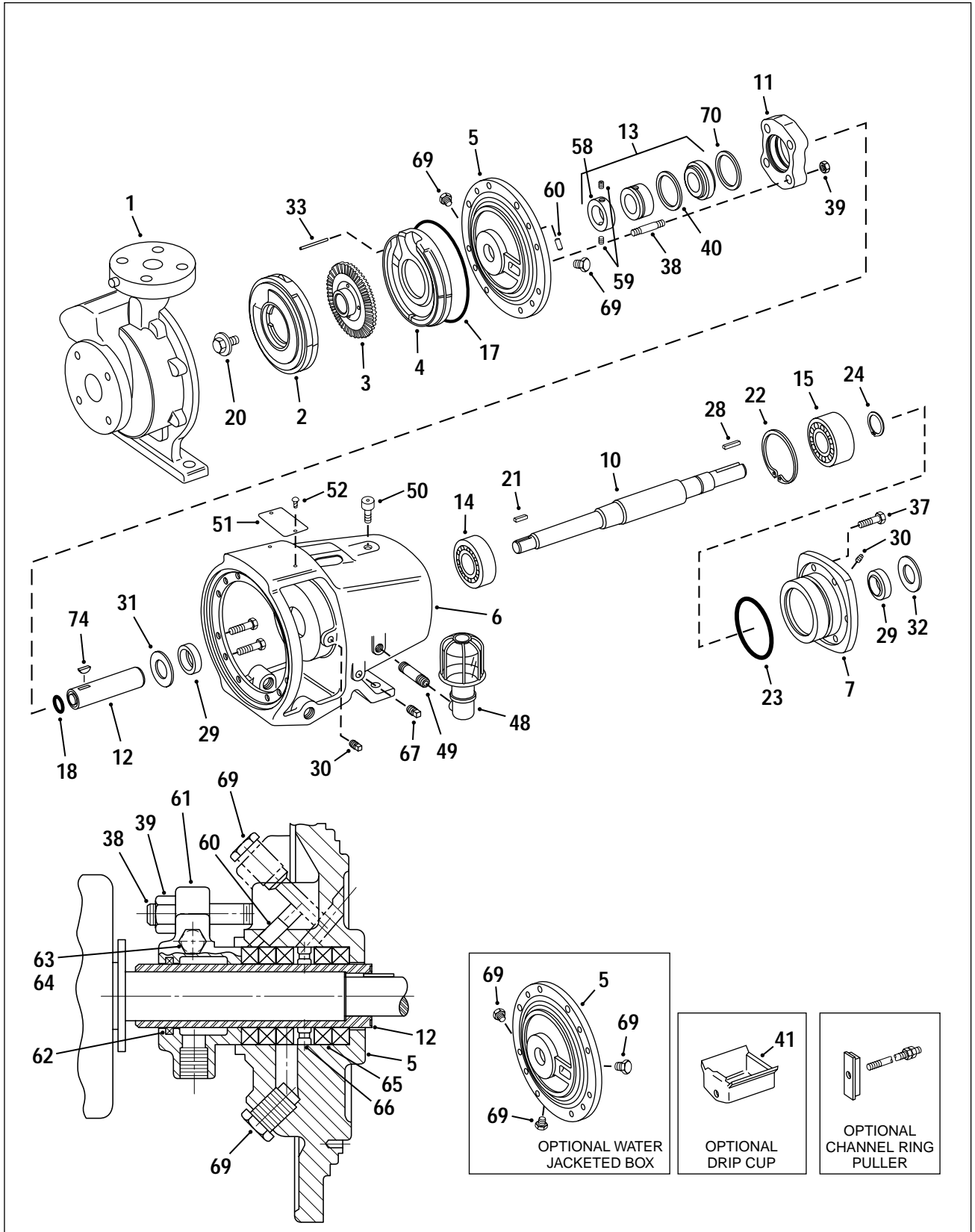
TABLE OF CONTENTS

MODEL	MATERIAL CODE	PUMP SIZE	PAGE
151	19-20-21-14	111	6
151	19-20-21-14	211	6
151	19-20-21-14	212	6
152	19-20-21-14	713	7-8
152	19-20-21-14	715	7-8
152	19-20-21-14	811	7-8
152	19-20-21-14	911	7-8
152	19-20-21-14	912	7-8
152	19-20-21-14	913	7-8
152	19-20-21-14	914	7-8
153-154	19-20-21-14	723	9-10
153-154	19-20-21-14	725	9-10
153-154	19-20-21-14	821	9-10
153-154	19-20-21-14	921	9-10
153-154	19-20-21-14	922	9-10
153-154	19-20-21-14	923	9-10
153-154	19-20-21-14	924	9-10
153-154	19-20-21-14	991	9-10
153-154	19-20-21-14	992	9-10
153-154	19-20-21-14	993	9-10
153-154	19-20-21-14	994	9-10
152	22	713	11-12
152	22	715	11-12
152	22	811	11-12
152	22	911	11-12
152	22	912	11-12
152	22	913	11-12
152	22	914	11-12
153-154	22	723	11-12
153-154	22	725	11-12
153-154	22	821	11-12
153-154	22	921	11-12
153-154	22	922	11-12
153-154	22	923	11-12
153-154	22	924	11-12
153-154	22	991	11-12
153-154	22	992	11-12
153-154	22	993	11-12
153-154	22	994	11-12

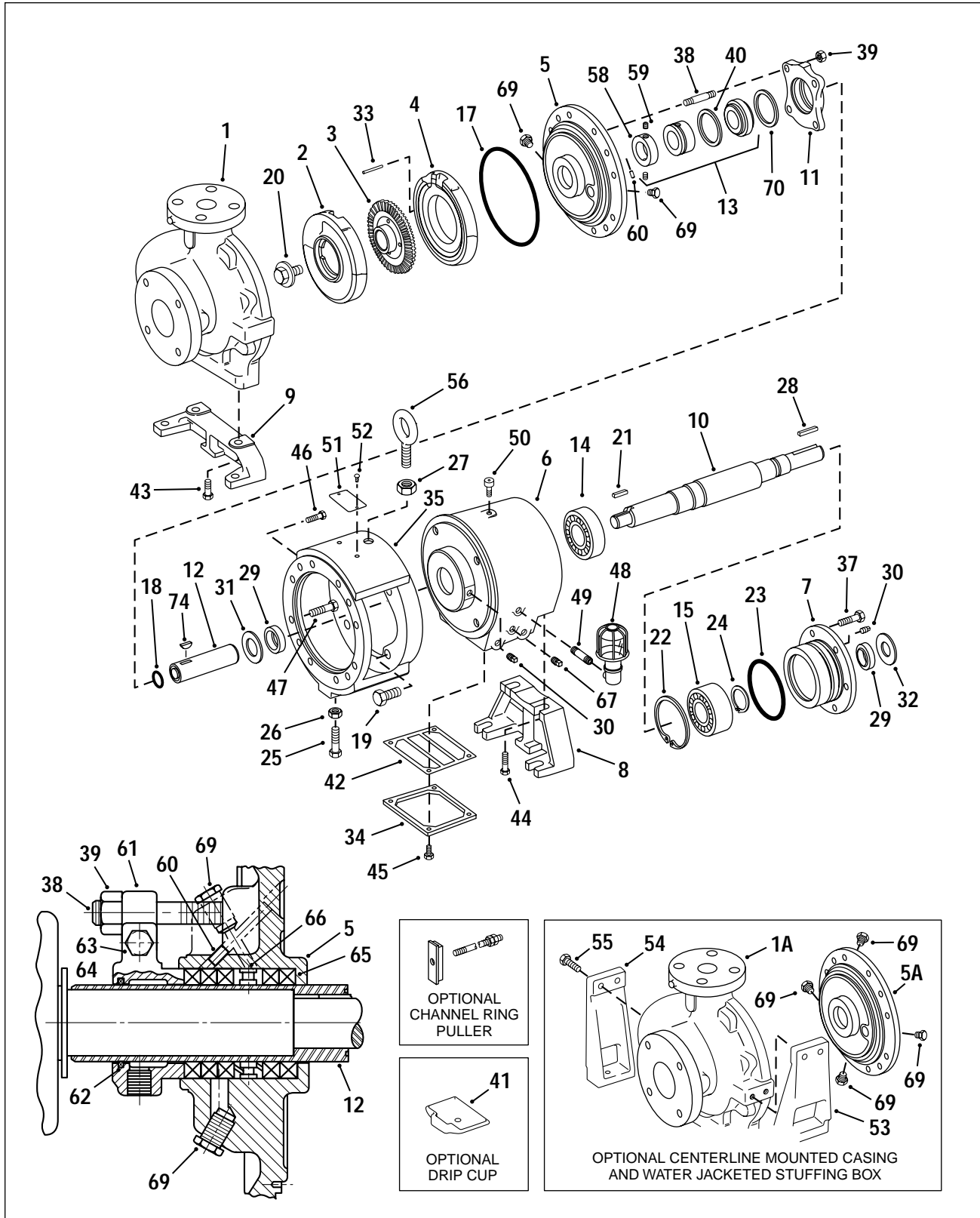
**150 SERIES
MODEL 151
PIECE NUMBERS**

SECTION 150P PAGE 3
DATED NOVEMBER 1999

SUPERSEDES 150P PAGE 3
DATED NOVEMBER 1988



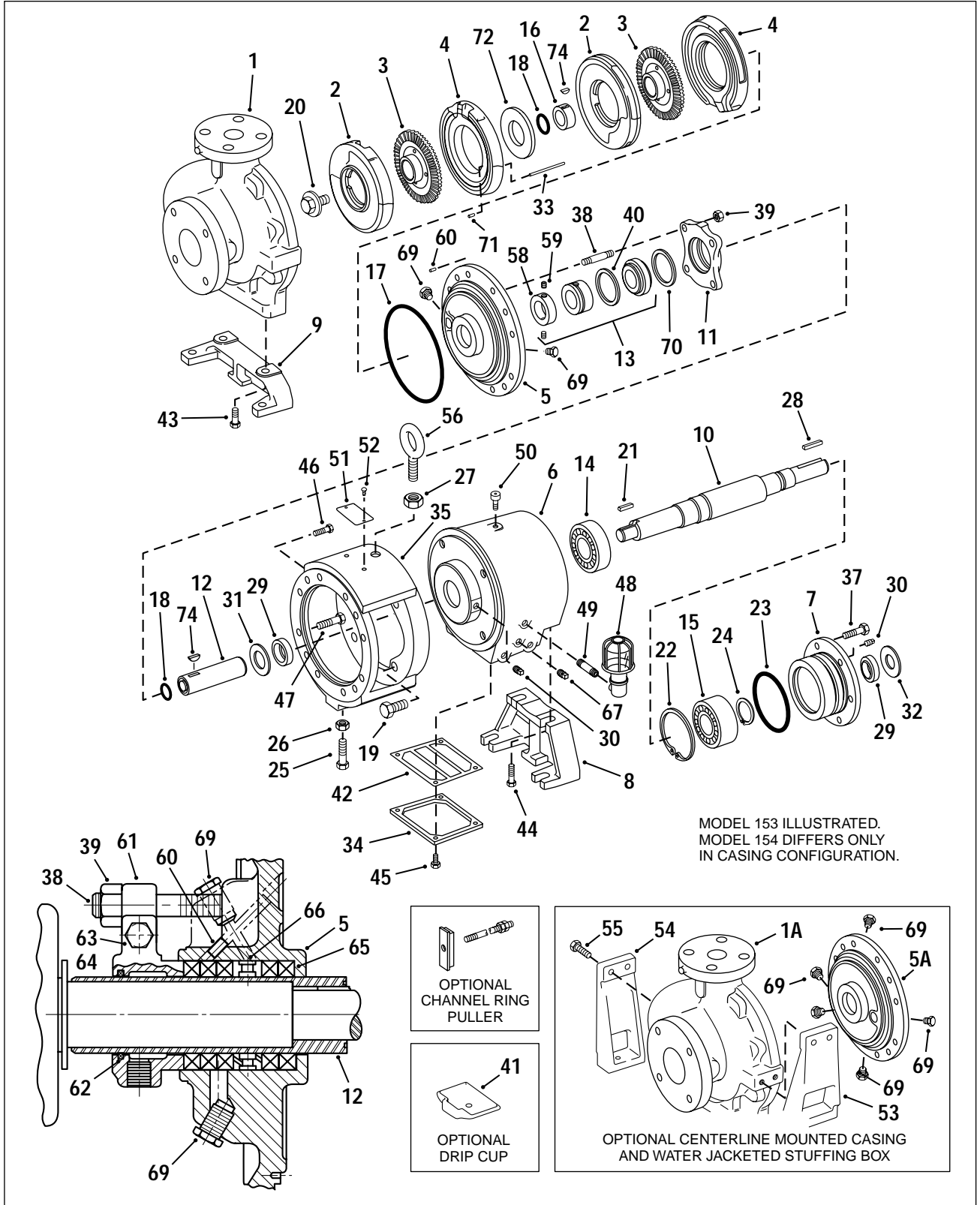
150 SERIES
 MODEL 152
 PIECE NUMBERS



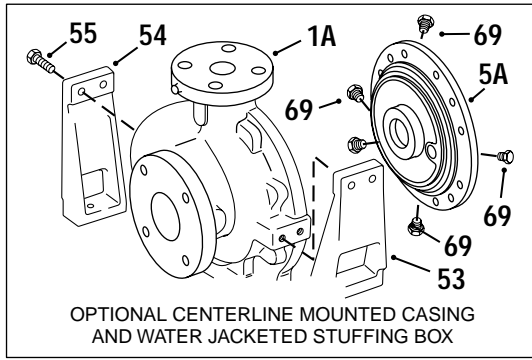
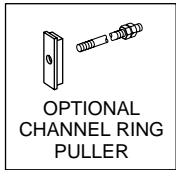
**150 SERIES
MODEL 153-154
PIECE NUMBERS**

SECTION 150P PAGE 5
DATED NOVEMBER 1999

SUPERSEDES 150P PAGE 5
DATED NOVEMBER 1988



MODEL 153 ILLUSTRATED.
MODEL 154 DIFFERS ONLY
IN CASING CONFIGURATION.



**150 SERIES
 MODEL 151
 111 THRU 212
 PARTS LIST**

PC. NO.	DESCRIPTION	QTY	PART NO.	MATERIAL				
				19	20	21	14	
1	CASING	1	180-0622	053	104	053	104	
2	CHANNEL RING (RIGHT HAND)	111	1	676-1939	010	010		
			1	676-0154			548	548
			1	676-1940	010	010		
			1	676-0156			548	548
			1	676-1941	010	010		
			1	676-0158			548	548
3	IMPELLER	111	1	444-2253	053	053	104	104
			1	444-2254	053	053	104	104
			1	444-2255	053	053	104	104
4	CHANNEL RING (LEFT HAND)	111	1	676-1936	010	010		
			1	676-0153			548	548
			1	676-1937	010	010		
			1	676-0155			548	548
			1	676-1938	010	010		
			1	676-0157			548	548
5	STUFFING BOX	1	812-0317	053	104	053	104	
5A	STUFFING BOX (OPTIONAL WATER JACKETED)	1	812-0318	053	104	053	104	
6	FRAME	1	356-0176	010	010	010	010	
7	BRG. CARTRIDGE	1	164-0453	010	010	010	010	
10	SHAFT	1	728-0427	063	063	063	104	
11	SEAL GLAND	1	372-0337	053	104	053	104	
12	SLEEVE PACKING SLEEVE, ROTT & 9T PT & 9BT	1	756-0507	108	108	108	104	
			756-0507	104	104	104	104	
			756-0508	104	104	104	104	
13	SEAL ROTT PT 9BT 9T	1	712-6175	776	776	776	776	
			712-6165	776	776	776	776	
			712-6155	762	762	762	762	
			712-6145	762	762	762	762	
14	BEARING	1	068-0157	647	647	647	647	
15	BEARING	1	068-0455	647	647	647	647	
17	O-RING	1	364-0447	494	494	494	494	
18	O-RING	1	364-0321	494	494	494	494	
20	IMPELLER SCREW	1	544-2158	104	104	104	104	
21	KEY	1	472-0180	104	104	104	104	
22	RETAINING RING	1	676-0445	088	088	088	088	

PC. NO.	DESCRIPTION	QTY	PART NO.	MATERIAL			
				19	20	21	14
23	O-RING	1	364-0427	457	457	457	457
24	RETAINING RING	1	676-0929	088	088	088	088
28	KEY	1	472-0201	087	087	087	087
29	SEAL	2	712-0250	653	653	653	653
30	PLUG	3	600-0001	087	087	087	087
31	SLINGER	1	764-0057	522	522	522	522
32	SLINGER	1	764-0057	522	522	522	522
33	PIN	1	592-0806	104	104	104	104
37	CAPSCREW	3	168-0386	082	082	082	082
38	STUD	2	808-0111	104	104	104	104
39	NUT	2	544-0109	104	104	104	104
40	GASKET	1	364-1315	509	509	509	509
41	DRIP CUP (OPT.)	1	268-0156	104	104	104	104
46	CAPSCREW	4	168-0382	082	082	082	104
47	CAPSCREW	8	168-0390	082	082	082	104
48	OILER	1	552-0027	652	652	652	652
49	NIPPLE	1	600-1204	387	387	387	387
50	BREATHER	1	864-0053	656	656	656	656
51	NAMEPLATE	1	532-0056	114	114	114	114
52	DRIVE SCREW	2	708-0013	365	365	365	365
57	THROTTLE BUSHING ROTT & 9T PT & 9BT	(NOT SHOWN)					
		1	136-1362	540	540	540	540
		1	136-1363	540	540	540	540
58	SEAL COLLAR	(NOT REQUIRED)					
59	SETSCREW	(NOT REQUIRED)					
60	PIN	1	592-0028	104	104	104	104
61	PACKING GLAND	1	372-0330	053	104	053	104
62	GLAND PACKING	2	564-0303	802	802	802	802
63	CAPSCREW	2	168-0280	104	104	104	104
64	NUT	2	544-0105	104	104	104	104
65	PACKING	6	564-0069	802	802	802	802
66	LATERN RING	1	676-0960	512	512	512	512
67	PLUG	3	600-0020	087	087	087	087
69	PLUG	3	600-0002	087	104	087	104
70	GASKET	1	364-1317	509	509	509	509
74	KEY	1	472-0109	104	104	104	104
	OPT. RING PULLER PULLER SCREW NUT						
		1	628-0009	058			
		1	708-0815	058			
		2	544-0109	080			

**150 SERIES
MODEL 152
713 THRU 914
PARTS LIST**

SECTION 150P PAGE 7
DATED NOVEMBER 1999
SUPERSEDES 150P PAGE 7
DATED NOVEMBER 1988

PC. NO.	DESCRIPTION	QTY	PART NO.	MATERIAL			
				19	20	21	14
1	CASING	1	180-0620	053	104	053	104
1A	CASING - CENTERLINE MOUNT	1	180-0623	053	104	053	104
2	CHANNEL RING (RIGHT HAND)	713	676-1928	010	010		
			676-0160			548	548
			676-1929	010	010		
			676-0162			548	548
			676-1930	010	010		
			676-0164			548	548
			676-1931	010	010		
			676-0166			548	548
			676-1932	010	010		
			676-0168			548	548
			676-1933	010	010		
			676-0170			548	548
			676-1934	010	010		
			676-0172			548	548
			3	IMPELLER	713	444-2256	053
444-2256	053	053				104	104
444-2257	053	053				104	104
444-2258	053	053				104	104
444-2259	053	053				104	104
444-2260	053	053				104	104
444-2261	053	053				104	104
4	CHANNEL RING (LEFT HAND)	713	676-1921	010	010		
			676-0159			548	548
			676-1922	010	010		
			676-0161			548	548
			676-1923	010	010		
			676-0163			548	548
			676-1924	010	010		
			676-0165			548	548
			676-1925	010	010		
			676-0167			548	548
			676-1926	010	010		
			676-0169			548	548
			676-1927	010	010		
			676-0171			548	548

PC. NO.	DESCRIPTION	QTY	PART NO.	MATERIAL			
				19	20	21	14
5	STUFFING BOX	1	812-0315	053	104	053	104
5A	STUFFING BOX - JACKETED	1	812-0316	053	104	053	104
6	FRAME (STD) (JACKETED)	1	356-0004	010	010	010	010
		1	356-0007	010	010	010	010
7	BRG. CARTRIDGE	1	164-0108	010	010	010	010
8	FRAME FOOT	1	820-0125	010	010	010	010
9	CASING FOOT	1	820-0127	010	010	010	010
10	SHAFT	1	728-0425	063	063	063	104
11	GLAND		REFER TO FACTORY				
12	SLEEVE PACKING ROTT & 9T PT & 9BT	1	756-0504	108	108	108	104
		1	756-0504	104	104	104	104
		1	756-0505	104	104	104	104
13	SEAL ROTT 9T PT 9BT	1	712-6176	776	776	776	776
		1	712-6146	762	762	762	762
		1	712-6166	776	776	776	776
		1	712-6156	762	762	762	762
14	BEARING	1	068-0160	647	647	647	647
15	BEARING	1	068-0458	647	647	647	647
17	O-RING	1	364-0456	494	494	494	494
18	O-RING	2	364-0329	494	494	494	494
19	CAPSCREW	4	168-0562	082	082	082	082
20	IMPELLER SCREW	1	544-2159	104	104	104	104
21	KEY	1	472-0201	104	104	104	104
22	RETAINING RING	1	676-0446	088	088	088	088
23	O-RING	1	364-0436	457	457	457	457
24	RETAINING RING	1	676-0943	088	088	088	088
25	CAPSCREW	1	168-0496	082	082	082	082
26	NUT	1	544-0113	082	082	082	082
27	NUT	1	544-0117	082	082	082	082
28	KEY	1	472-0245	087	087	087	087
29	SEAL	2	712-0256	653	653	653	653
30	PLUG	3	600-0001	087	087	087	087
31	SLINGER	1	764-0055	522	522	522	522
32	SLINGER	1	764-0056	522	522	522	522
33	PIN	1	592-0806	104	104	104	104
34	POWER FRAME COVER	1	260-0682	087	087	087	087
35	BRACKET	1	116-0461	010	010	010	010
37	CAPSCREW	3	168-0492	082	082	082	082

**150 SERIES
 MODEL 152
 713 THRU 914
 PARTS LIST**

PC. NO.	DESCRIPTION	QTY	PART NO.	MATERIAL			
				19	20	21	14
38	STUD (STD PUMP) (JACKETED PUMP)	2	808-0315	104	104	104	104
		2	808-0313	104	104	104	104
39	NUT	2	544-0113	104	104	104	104
40	GASKET	1	364-1314	509	509	509	509
41	DRIP CUP (OPT.)	1	268-0155	104	104	104	104
42	POWER FR. GASKET	1	364-0811	614	614	614	614
43	CAPSCREW	2	168-0488	082	082	082	082
44	CAPSCREW	3	168-0492	082	082	082	082
45	CAPSCREW	4	168-0252	082	082	082	082
46	CAPSCREW	4	168-0488	082	082	082	104
47	CAPSCREW	8	168-0496	082	082	082	104
48	OILER	1	552-0027	652	652	652	652
49	NIPPLE	1	600-1204	387	387	387	387
50	BREATHER	1	864-0053	656	656	656	656
51	NAMEPLATE	1	532-0056	114	114	114	114
52	DRIVE SCREW	2	708-0013	365	365	365	365
53	CASING FT. RH	1	820-0126	010	010	010	010
54	CASING FT. RH	1	820-0128	010	010	010	010
55	CAPSCREW	4	168-0492	082	082	082	082
56	EYEBOLT	1	100-0110	082	082	082	082
57	THROTTLE BUSHING (NOT SHOWN)						
		1	136-1359	540	540	540	540
		1	136-1360	540	540	540	540
58	SEAL COLLAR		REFER TO FACTORY				
59	SETSCREW	2	724-0077	104	104	104	104
60	PIN	1	592-0028	104	104	104	104
61	PACKING GLAND	1	372-0323	053	104	053	104
62	GLAND PACKING	2	564-0302	802	802	802	802
63	CAPSCREW	2	168-0394	104	104	104	104
64	NUT	2	544-0109	104	104	104	104
65	PACKING	7	564-0105	802	802	802	802
66	LANTERN RING	1	676-0953	512	512	512	512
67	PLUG	3	600-0002	087	087	087	087
69	PLUG	4	600-0002	087	104	087	104
70	GASKET	1	364-1316	509	509	509	509

PC. NO.	DESCRIPTION	QTY	PART NO.	MATERIAL			
				19	20	21	14
74	KEY	1	472-0109	104	104	104	104
	OPTIONAL RING PULLER						
	PULLER	1	628-0010	058			
	SCREW	1	708-0815	058			
	NUT	2	544-0109	080			
	REPAIR KIT INCLUDES PIECE NOS. 2, 3, 4, 17, 18, 20, 23						
	151	CT-111	476-0319	642			623
		CT-211	476-0320	642			623
		CT-212	476-0321	642			623
	152	CT-713	476-0322	642			623
		CT-715	476-0323	642			623
		CT-811	476-0324	642			623
		CT-911	476-0325	642			623
		CT-912	476-0326	642			623
		CT-913	476-0327	642			623
		CT-914	476-0328	642			623

**150 SERIES
MODEL 153-154
723 THRU 994
PARTS LIST**

SECTION 150P PAGE 9
DATED NOVEMBER 1999
SUPERSEDES 150P PAGE 9
DATED NOVEMBER 1988

PC. NO.	DESCRIPTION	QTY	PART NO.	MATERIAL			
				19	20	21	14
1	CASING - 153	1	180-0621	053	104	053	104
	CASING - 154	1	180-0616	053	104	053	104
1A	CASING - CENTERLINE MOUNT - 153	1	180-0624	053	104	053	104
	CASING - CENTERLINE MOUNT - 154	1	180-0617	053	104	053	104
2	CHANNEL RING (RIGHT HAND)	723	2 676-1928	010	010		
		723	2 676-0160			548	548
		725	2 676-1929	010	010		
		725	2 676-0162			548	548
		821	2 676-1930	010	010		
		821	2 676-0164			548	548
		921 & 991	2 676-1931	010	010		
		921 & 991	2 676-0166			548	548
		922 & 992	2 676-1932	010	010		
		922 & 992	2 676-0168			548	548
		923 & 993	2 676-1933	010	010		
		923 & 993	2 676-0170			548	548
		924 & 994	2 676-1934	010	010		
		924 & 994	2 676-0172			548	548
	3	IMPELLER	723	2 444-2256	053	053	104
		725	2 444-2256	053	053	104	104
		821	2 444-2257	053	053	104	104
		921 & 991	2 444-2258	053	053	104	104
		922 & 992	2 444-2259	053	053	104	104
		923 & 993	2 444-2260	053	053	104	104
		924 & 994	2 444-2261	053	053	104	104
4	CHANNEL RING (LEFT HAND)	723	2 676-1921	010	010		
		723	2 676-0159			548	548
		725	2 676-1922	010	010		
		725	2 676-0161			548	548
		821	2 676-1923	010	010		
		821	2 676-0163			548	548
		921 & 991	2 676-1924	010	010		
		921 & 991	2 676-0165			548	548
		922 & 992	2 676-1925	010	010		
		922 & 992	2 676-0167			548	548

PC. NO.	DESCRIPTION	QTY	PART NO.	MATERIAL			
				19	20	21	14
4	CHANNEL RING LH						
	923 & 993	2	676-1926	010	010		
	923 & 993	2	676-0169			548	548
	924 & 994	2	676-1927	010	010		
	924 & 994	2	676-0171			548	548
5	STUFFING BOX	1	812-0315	053	104	053	104
5A	STUFFING BOX - JACKETED	1	812-0316	053	104	053	104
6	FRAME (STD.)	1	356-0004	010	010	010	010
	(JACKETED)	1	356-0007	010	010	010	010
7	BRG. CARTRIDGE	1	164-0108	010	010	010	010
8	FRAME FOOT	1	820-0125	010	010	010	010
9	CASING FOOT	1	820-0127	010	010	010	010
10	SHAFT	1	728-0426	063	063	063	104
11	GLAND		REFER TO FACTORY				
12	SLEEVE PACKING	1	756-0504	108	108	108	104
	ROTT & 9T	1	756-0504	104	104	104	104
	PT & 9BT	1	756-0505	104	104	104	104
13	SEAL						
	ROTT	1	712-6176	776	776	776	776
	9T	1	712-6146	762	762	762	762
	PT	1	712-6166	776	776	776	776
	9BT	1	712-6156	762	762	762	762
14	BEARING	1	068-0160	647	647	647	647
15	BEARING	1	068-0458	647	647	647	647
16	SLEEVE EXTENSION	1	756-0503	104	104	104	104
17	O-RING	1	364-0456	494	494	494	494
18	O-RING	2	364-0329	494	494	494	494
19	CAPSCREW	4	168-0562	082	082	082	082
20	IMPELLER SCREW	1	544-2159	104	104	104	104
21	KEY - SLEEVE	1	472-0211	104	104	104	104
22	RETAINING RING	1	676-0446	088	088	088	088
23	O-RING	1	364-0436	457	457	457	457
24	RETAINING RING	1	676-0943	088	088	088	088
25	CAPSCREW	1	168-0496	082	082	082	082
26	NUT	1	544-0113	082	082	082	082
27	NUT	1	544-0117	082	082	082	082
28	KEY	1	472-0245	087	087	087	087

**150 SERIES
 MODEL 153-154
 723 THRU 994
 PARTS LIST**

PC. NO.	DESCRIPTION	QTY	PART NO.	MATERIAL			
				19	20	21	14
29	SEAL	2	712-6327	653	653	653	653
30	PLUG	3	600-0001	087	087	087	087
31	SLINGER	1	764-0055	522	522	522	522
32	SLINGER	1	764-0056	522	522	522	522
33	PIN	1	592-0817	104	104	104	104
34	POWER FRAME COVER	1	260-0682	087	087	087	087
35	BRACKET	1	116-0461	010	010	010	010
37	CAPSCREW	3	168-0492	082	082	082	082
38	STUD		REFER TO FACTORY				
39	NUT	2	544-0113	104	104	104	104
40	GASKET	1	364-1314	509	509	509	509
41	DRIP CUP	1	268-0155	104	104	104	104
42	POWER FR. GASKET	1	364-0811	614	614	614	614
43	CAPSCREW	2	168-0488	082	082	082	082
44	CAPSCREW	2	168-0492	082	082	082	082
45	CAPSCREW	4	168-0252	082	082	082	082
46	CAPSCREW	4	168-0488	082	082	082	104
47	CAPSCREW	8	168-0496	082	082	082	104
48	OILER	1	552-0027	652	652	652	652
49	NIPPLE	1	600-1204	387	387	387	387
50	BREATHER	1	864-0053	656	656	656	656
51	NAMEPLATE	1	532-0056	114	114	114	114
52	DRIVE SCREW	2	708-0013	365	365	365	365
53	CASING FT. RH	1	820-0126	010	010	010	010
54	CASING FT. LH	1	820-0128	010	010	010	010
55	CAPSCREW	4	168-0492	082	082	082	082
56	EYEBOLT	1	100-0110	082	082	082	082
57	THROTTLE BUSHING (NOT SHOWN)						
	ROTT & 9T	1	136-1359	540	540	540	540
	PT & 9BT	1	136-1360	540	540	540	540
58	SEAL COLLAR		REFER TO FACTORY				
59	SETSCREW	2	724-0077	104	104	104	104
60	PIN	1	592-0028	104	104	104	104
61	PACKING GLAND	1	372-0323	053	104	053	104
62	GLAND PACKING	2	564-0302	802	802	802	802
63	CAPSCREW	2	168-0394	104	104	104	104
64	NUT	2	544-0109	104	104	104	104
65	PACKING	7	564-0105	802	802	802	802

PC. NO.	DESCRIPTION	QTY	PART NO.	MATERIAL			
				19	20	21	14
66	LANTERN RING	1	676-0953	512	512	512	512
67	PLUG	3	600-0002	087	087	087	087
69	PLUG	5	600-0002	087	104	087	104
70	GASKET	1	364-1316	509	509	509	509
71	PIN	1	592-0238	104	104	104	104
72	BUSHING	1	136-0117	104	104	104	104
74	KEY	2	472-0109	104	104	104	104
	OPTIONAL RING						
	PULLER						
	PULLER	1	628-0010	058			
	SCREW	1	708-0815	058			
	NUT	2	544-0109	080			
	REPAIR KIT INCLUDES						
	PIECE NOS.						
	2, 3, 4, 16, 17, 18, 20,						
	33, 71, 72, 74						
	CT-723		476-0329	642			623
	CT-725		476-0330	642			623
	CT-821		476-0331	642			623
	CT-921		476-0332	642			623
	CT-922		476-0333	642			623
	CT-923		476-0334	642			623
	CT-924		476-0335	642			623
	CT-991		476-0332	642			623
	CT-992		476-0333	642			623
	CT-993		476-0334	642			623
	CT-994		476-0335	642			623

**150 SERIES
MODEL 152-153-154
713 THRU 914, 723 THRU 994
PARTS LIST**

SECTION 150P PAGE 11
DATED NOVEMBER 1999
SUPERSEDES 150P PAGE 11
DATED NOVEMBER 1988

PC. NO.	DESCRIPTION	QTY	PART NO.	MATERIAL			
				22	-	-	-
1	CASING	152	1 180-0620	111			
		153	1 180-0621	111			
		154	1 180-0616	111			
1A	CASING CENTERLINE MOUNT						
		152	1 180-0623	111			
		153	1 180-0624	111			
		154	1 180-0617	111			
2	CHANNEL RING (RIGHT HAND)	152	713 1 676-0160	549			
			715 1 676-0162	549			
			811 1 676-0164	549			
			911 1 676-0166	549			
			912 1 676-0168	549			
			913 1 676-0170	549			
			914 1 676-0172	549			
		153-154	723 2 676-0160	549			
			725 2 676-0162	549			
			821 2 676-0164	549			
			921 & 991 2 676-0166	549			
			922 & 992 2 676-0168	549			
			923 & 993 2 676-0170	549			
			924 & 994 2 676-0172	549			
3	IMPELLER	152	713 1 444-2256	111			
			715 1 444-2256	111			
			811 1 444-2257	111			
			911 1 444-2258	111			
			912 1 444-2259	111			
			913 1 444-2260	111			
			914 1 444-2261	111			
		153-154	723 2 444-2256	111			
			725 2 444-2256	111			
			821 2 444-2257	111			
			921 & 991 2 444-2258	111			
			922 & 992 2 444-2259	111			
			923 & 993 2 444-2260	111			
			924 & 994 2 444-2261	111			

PC. NO.	DESCRIPTION	QTY	PART NO.	MATERIAL			
				22	-	-	-
4	CHANNEL RING (LEFT HAND)	152	713 1 676-0159	549			
			715 1 676-0161	549			
			811 1 676-0163	549			
			911 1 676-0165	549			
			912 1 676-0167	549			
			913 1 676-0169	549			
			914 1 676-0171	549			
		153-154	723 2 676-0159	549			
			725 2 676-0161	549			
			821 2 676-0163	549			
			921 & 991 2 676-0165	549			
			922 & 992 2 676-0167	549			
			923 & 993 2 676-0169	549			
			924 & 994 2 676-0171	549			
5	STUFFING BOX	1	812-0315	111			
5A	STUFFING BOX - JACKETED	1	812-0316	111			
6	FRAME JACKETED	1	356-0004	010			
		1	356-0007	010			
7	BRG. CARTRIDGE	1	164-0108	010			
8	FRAME FOOT	1	820-0125	010			
9	CASING FOOT	1	820-0127	010			
10	SHAFT	152	1 728-0425	111			
		153-154	1 728-0426	111			
11	GLAND		REFER TO FACTORY				
12	SLEEVE PACKING	1	756-0504	111			
		1	756-0504	111			
		1	756-0505	111			
13	SEAL	ROTT	1 712-6176	775			
		9T	1 712-6146	768			
		PT	1 712-6166	775			
		9BT	1 712-6156	768			
14	BEARING	1	068-0160	647			
15	BEARING	1	068-0458	647			
16	SLEEVE EXTENSION	153-154	1 756-0503	111			
17	O-RING	1	364-0456	509			
18	O-RING	1	364-0329	509			

150 SERIES
MODEL 152-153-154
713 THRU 914, 723 THRU 994
PARTS LIST

PC. NO.	DESCRIPTION	QTY	PART NO.	MATERIAL			
				22	-	-	-
19	CAPSCREW	4	168-0562	082			
20	IMPELLER SCREW	1	544-2159	111			
21	KEY 152 153-154	1	472-0201	111			
		1	472-0211	111			
22	RETAINING RING	1	676-0446	088			
23	O-RING	1	364-0436	457			
24	RETAINING RING	1	676-0943	088			
25	CAPSCREW	1	168-0496	082			
26	NUT	1	544-0113	080			
27	NUT	1	544-0117	080			
28	KEY	1	472-0245	087			
29	SEAL	2	712-6327	653			
30	PLUG	2	600-0001	087			
31	SLINGER	1	764-0055	522			
32	SLINGER	1	764-0056	522			
33	PIN 152 153-154	1	592-0806	111			
		1	592-0817	111			
34	POWER FRAME COVER						
		1	260-0682	087			
35	BRACKET	1	116-0461	010			
37	CAPSCREW	3	168-0492	082			
38	STUD		REFER TO FACTORY				
39	NUT 152 153-154	2	544-0113	111			
		2	544-0013	111			
40	GASKET	1	364-1314	509			
41	DRIP CUP	1	268-0155	104			
42	GASKET	1	364-0811	614			
43	CAPSCREW	2	168-0488	082			
44	CAPSCREW	3	168-0492	082			
45	CAPSCREW	4	168-0252	082			
46	CAPSCREW	2	168-0488	104			
47	CAPSCREW	8	168-0496	104			
48	OILER	1	552-0027	652			
49	NIPPLE	1	600-1204	387			
50	BREATHER	1	864-0053	656			
51	NAMEPLATE	1	532-0056	114			
52	DRIVE SCREW	2	708-0013	365			
53	CASING FOOT RH	1	820-0126	010			
54	CASING FOOT LH	1	820-0128	010			
56	EYEBOLT	1	100-0110	082			

PC. NO.	DESCRIPTION	QTY	PART NO.	MATERIAL			
				22	-	-	-
57	THROTTLE BUSHING (NOT SHOWN) ROTT & 9T PT & 9BT						
		1	136-1359	540			
		1	136-1360	540			
58	SEAL COLLAR		REFER TO FACTORY				
59	SETSCREW	2	724-0077	111			
60	PIN	1	592-0028	111			
61	PACKING GLAND	1	372-0323	111			
62	GLAND PACKING	2	564-0302	802			
63	CAPSCREW	2	168-0394	111			
64	NUT	2	544-0109	111			
65	PACKING	7	564-0105	802			
66	LANTERN RING	1	676-0953	512			
67	PLUG	3	600-0002	087			
69	PLUG	5	600-0002	087			
70	GASKET	1	364-1316	509			
71	PIN 153-154	1	592-0238	111			
72	BUSHING 153-154	1	136-0117	111			
74	KEY	1	472-0109	111			
	OPTIONAL RING						
	PULLER						
	SCREW	1	708-0815	058			
	NUT	2	544-0109	080			
	PULLER	1	628-0010	058			
75	PLUG 152 153 154						
			N/R*				
			N/R				
		1	600-0005	087	104	087	104



NOTE:
Aurora Pump reserves the right to make revisions to its products and their specifications, and to this bulletin and related information without notice

Aurora Pumps
800 Airport Road
North Aurora, IL 60542
phone: 630-859-7000
fax: 630-859-7060